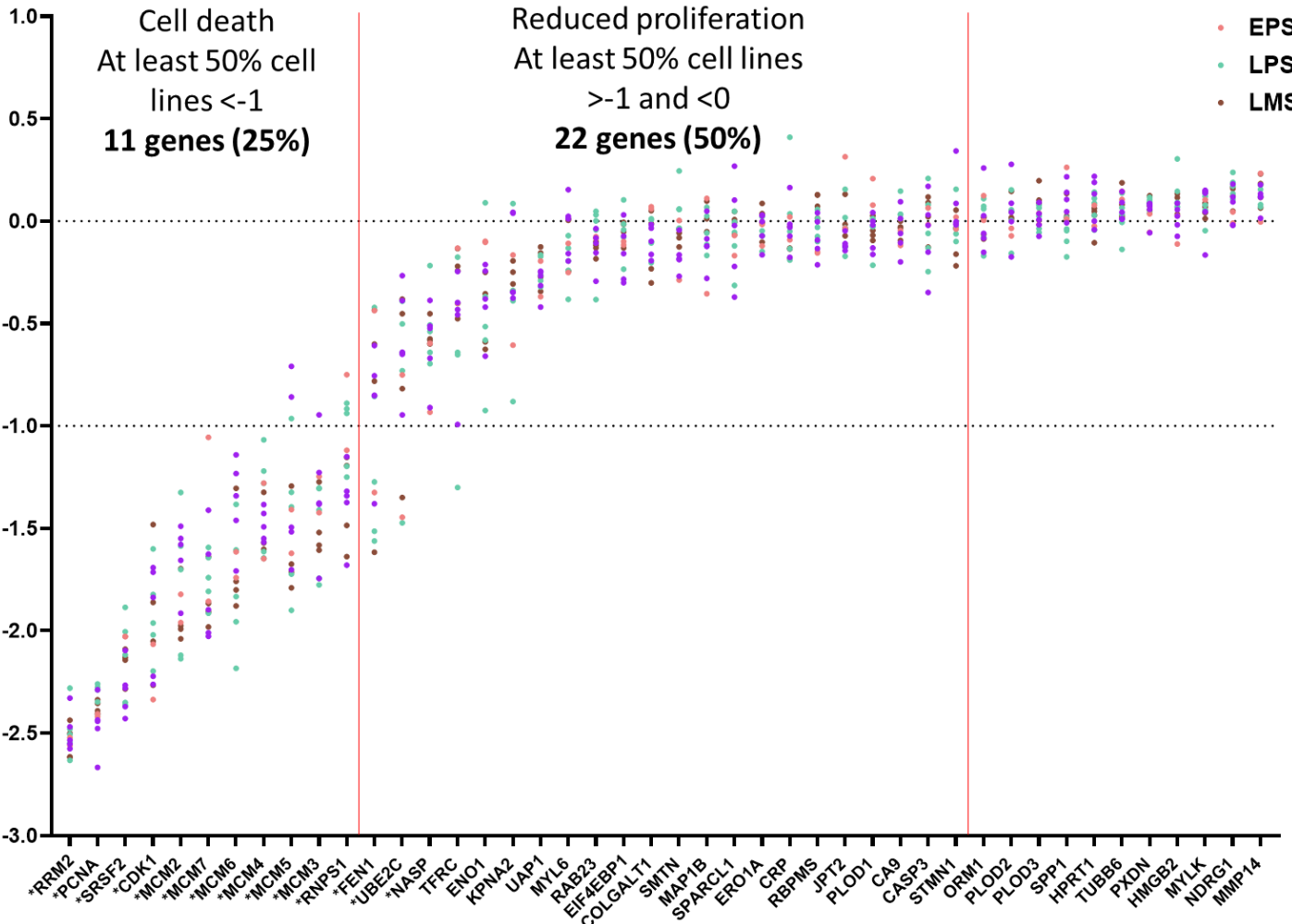


- SS
- EPS
- LPS
- LMS



\*RRM2 \*PCNA \*SRSF2 \*CDK1 \*MCM2 \*MCM7 \*MCM6 \*MCM4 \*MCM5 \*MCM3 \*RNPS1 \*FEN1 \*UBE2C \*NASP TFRC ENO1 KPNA2 UAP1 MYL6 RAB23 EIF4EBP1 COLGALT1 SMTN MAP1B SPARCL1 ERO1A CRP RBPMS JPT2 PLOD1 CA9 CASP3 STMN1 ORM1 PLOD2 PLOD3 SPP1 HPRT1 TUBB6 PXDN HMGB2 MYLK NDRG1 MMP14