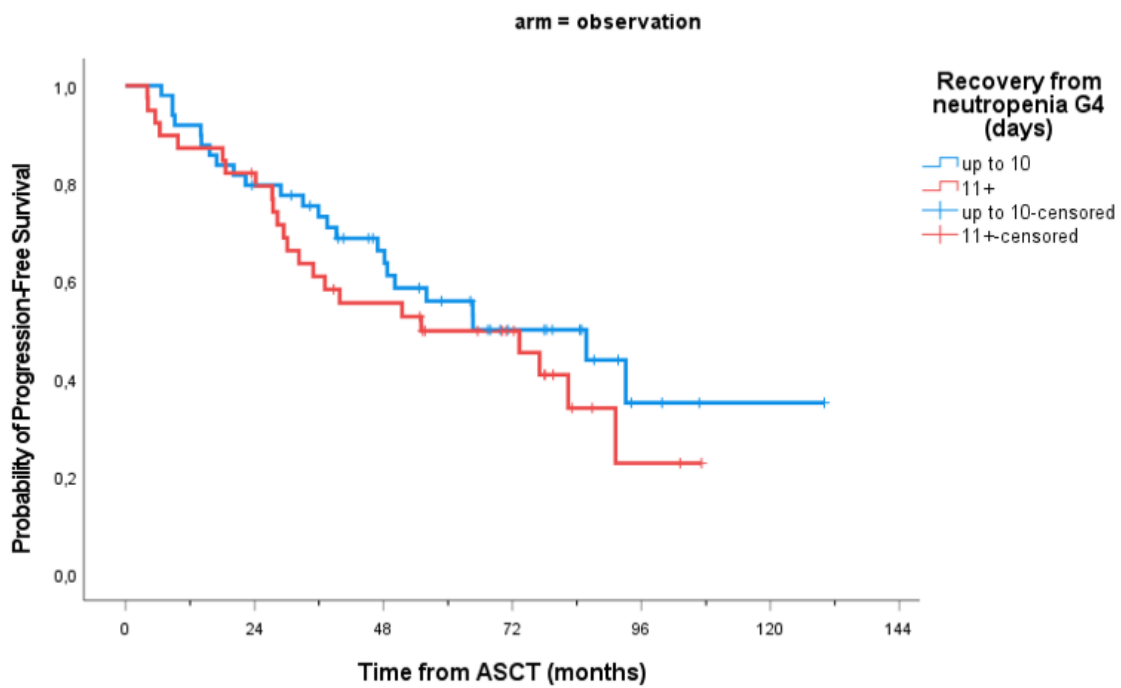


Figure S1. Study flow chart. The FIL-MCL0208 trial treatment schedule is depicted. Abbreviations: R-HDS=rituximab and high dose chemotherapy schedule; ASCT=autologous stem cell transplantation; R-CHOP=rituximab with cyclophosphamide, doxorubicin, vincristine and prednisone; R-CTX=rituximab and cyclophosphamide; R-HD-Ara-C=rituximab and high dose cytarabine; Ritux=rituximab; BEAM=carmustine with etoposide, cytarabine and melphalan; CR=complete remission; PR=partial remission; SD=stable disease; PD=progressive disease.

| MEDIAN OF SC HARVESTED PER SUBTYPE | | |
|------------------------------------|------------------|------------------|
| MOBILIZER SUBTYPES | 1° HARVEST (IQR) | 2° HARVEST (IQR) |
| POOR | 3 (1.5-3) | 2 (1-2) |
| GOOD | 11 (7-16) | 6 (4-9) |

Table S1. Median of stem cells harvested per subtype. Abbreviations: SC=stem cells; IQR=interquartile range.

(A)



(B)

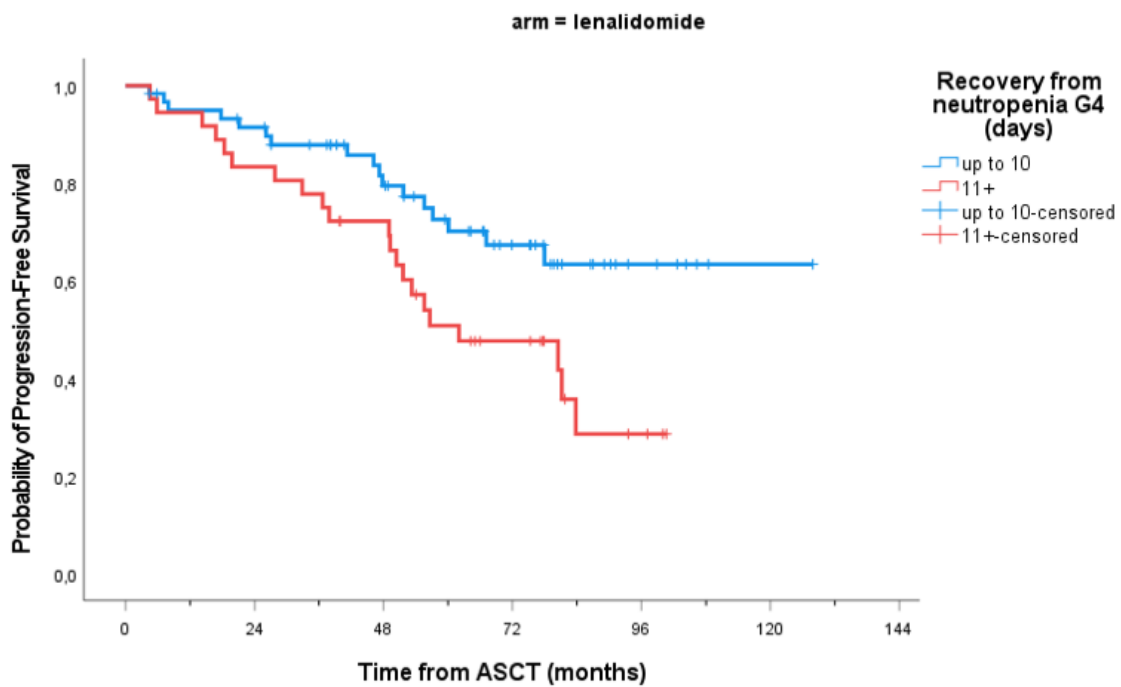
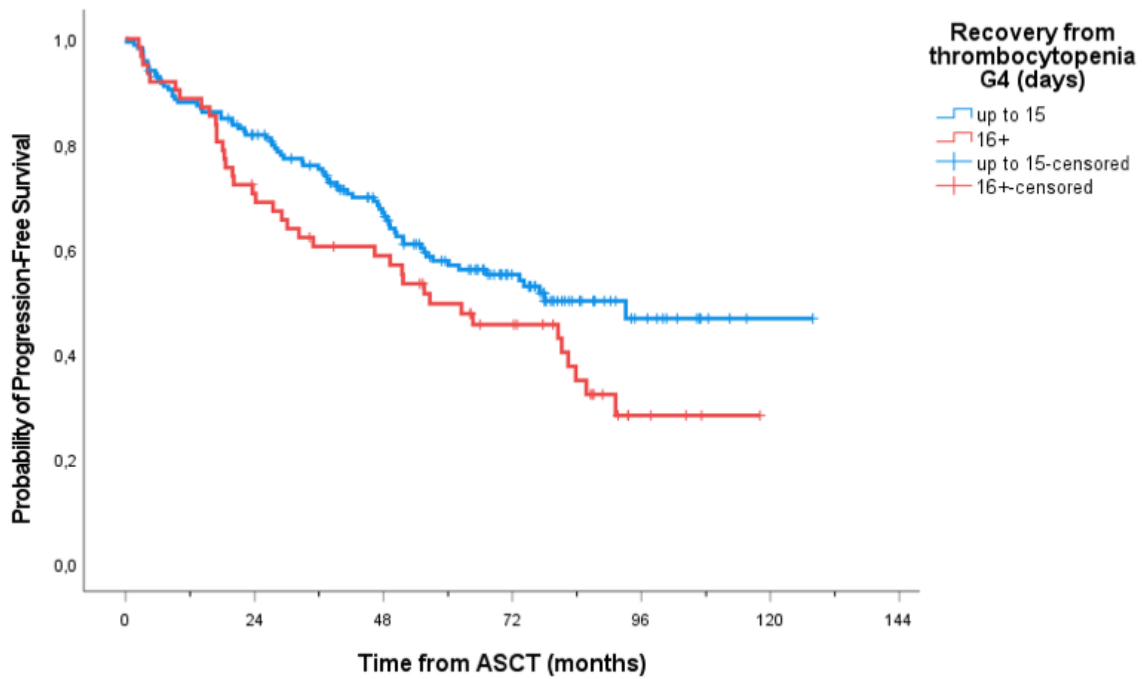


Figure S2. Kaplan-Meier estimates of PFS of transplanted patients according to days of recovery from neutropenia G4 (up to 10 vs 11 and more) after ASCT in the control arm (A) and randomised to lenalidomide maintenance (B). Abbreviations: G4=grade 4; ASCT=autologous stem cell transplantation.

(A)



(B)

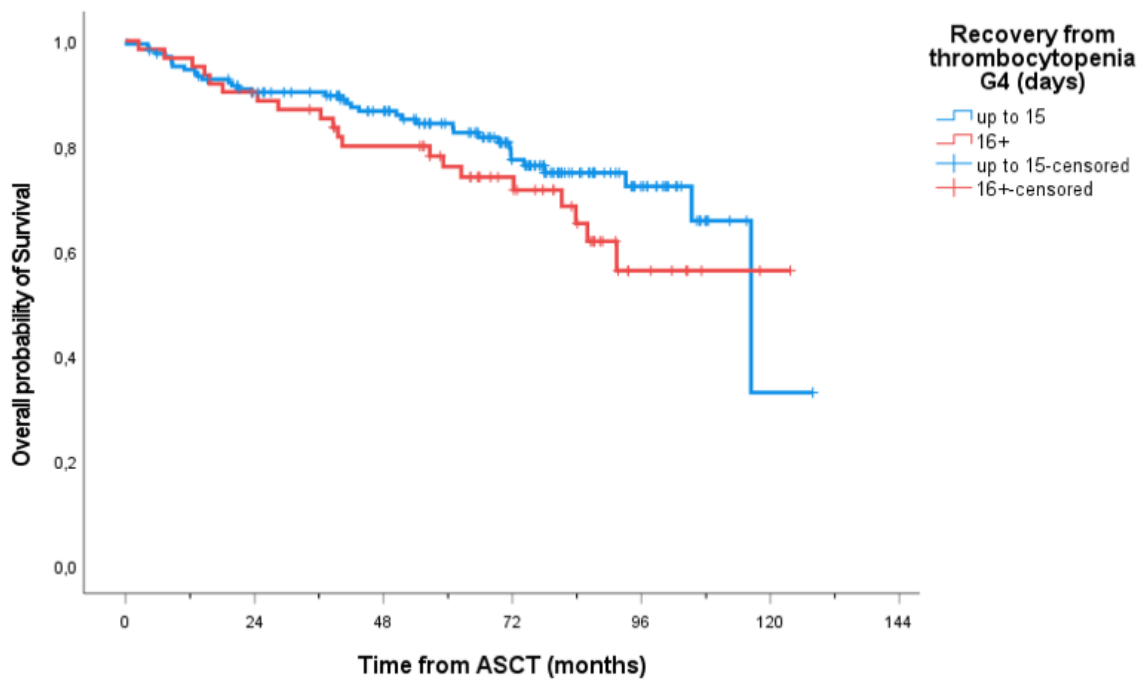


Figure S3. Kaplan-Meier estimates of PFS (A) and OS (B) of transplanted patients according to days of recovery from thrombocytopenia G4 (up to 15 vs 16 and more) after ASCT. Abbreviations: G4=grade 4; ASCT=autologous stem cell transplantation.