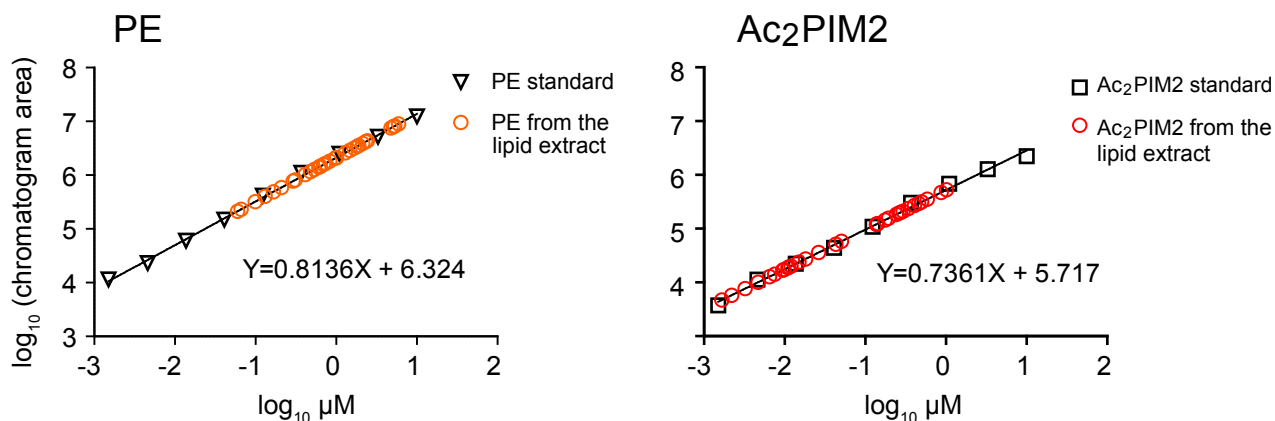
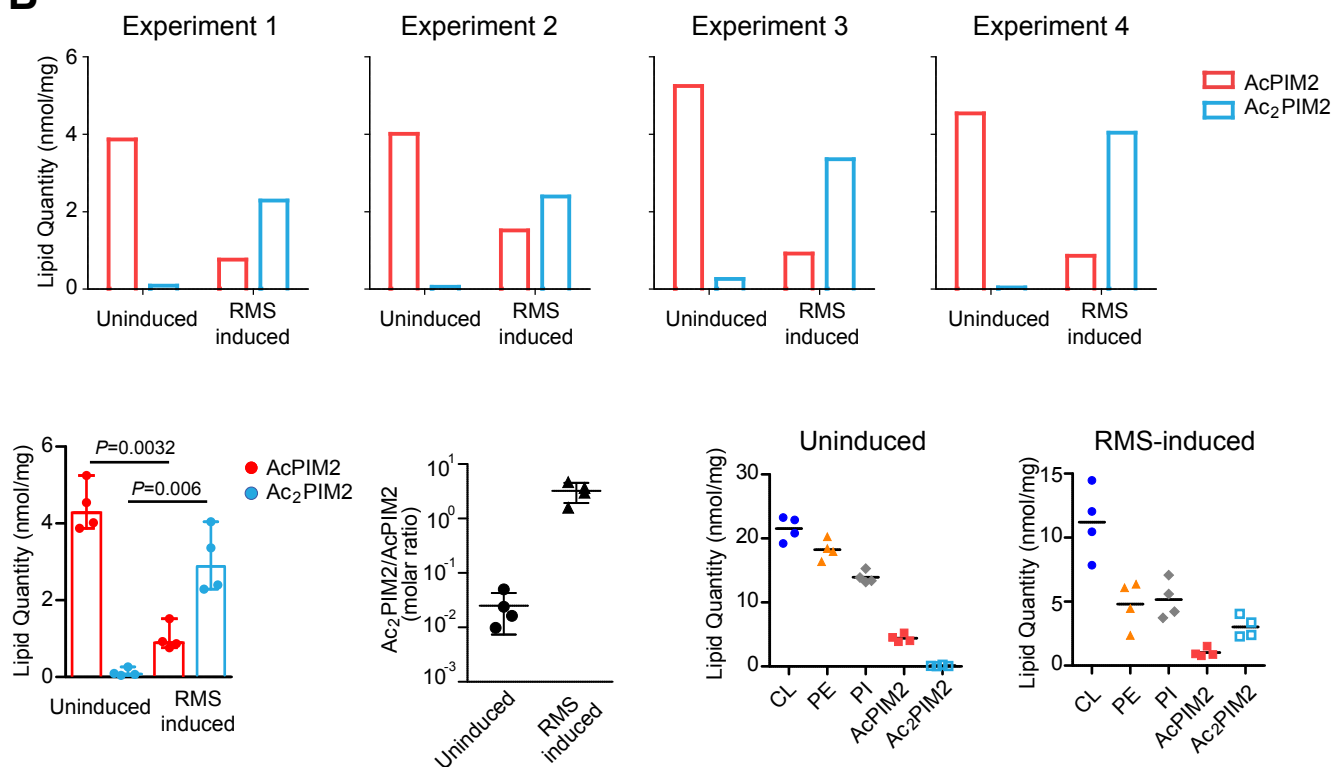


Supplemental Data

A



B



Supplemental Figure S1. Verification of nonlinear standard curve fitting. (A) The non-linear standard curves of PE and Ac₂PIM2 in Figure 7C were plotted as logarithmic scale for both x- and y-coordinates. The converted standard curves PE (black triangle) and Ac₂PIM2 (black square) were fitted with linear equations as indicated, which were used to calculate PE (orange circle) or Ac₂PIM2 (red circle) concentrations in the extracted lipids. (B) The estimated lipid quantities using the linear curve fitting were comparable with the results obtained by the non-linear curve fitting in Figure 7E-H.