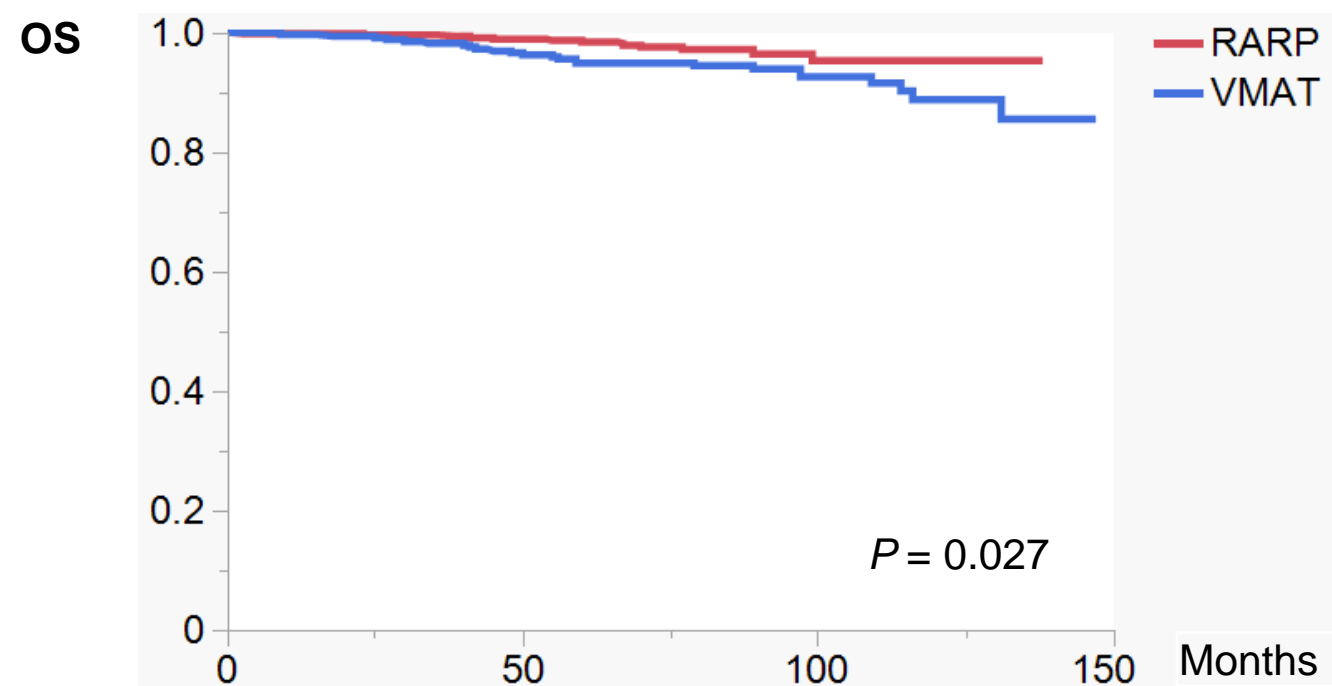


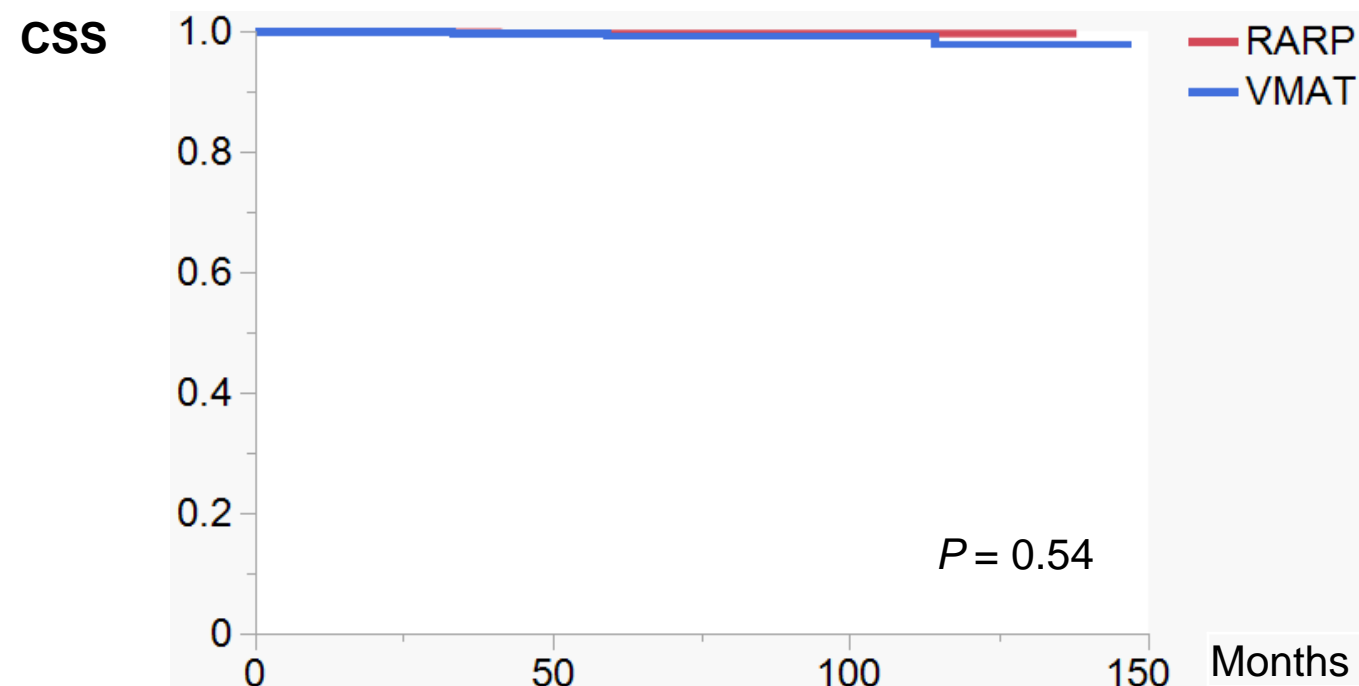
(A) Original cohort (before matching; $n = 860$)



Number at risk:

RARP	500	439	77	0
VMAT	360	296	114	0

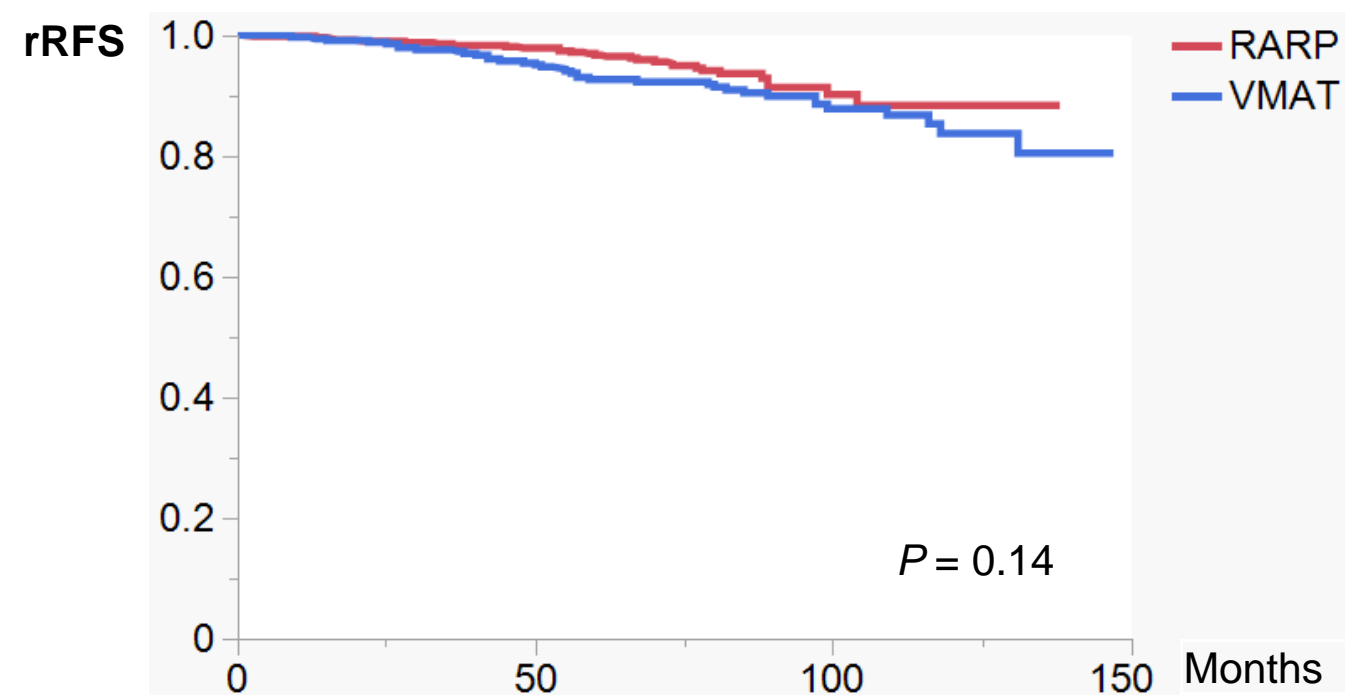
(B) Original cohort (before matching; $n = 860$)



Number at risk:

RARP	500	439	77	0
VMAT	360	296	114	0

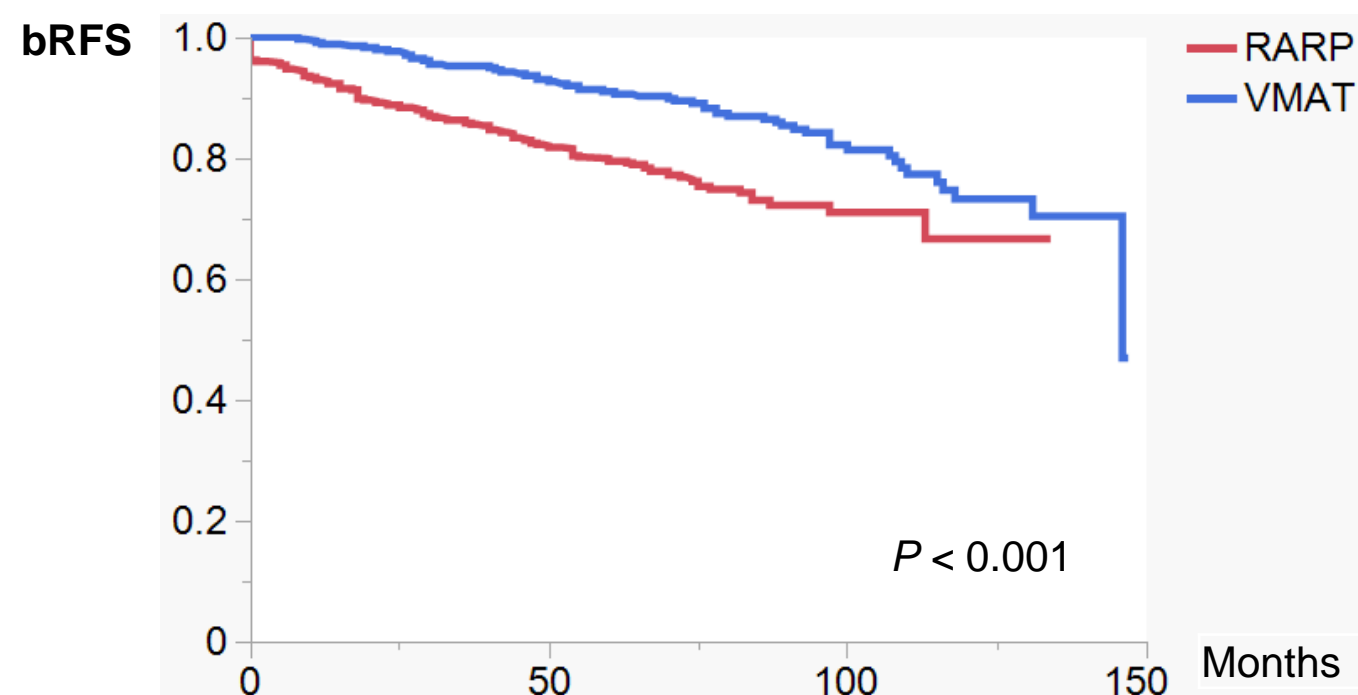
(C) Original cohort (before matching; $n = 860$)



Number at risk:

RARP	500	434	71	0
VMAT	360	291	107	0

(D) Original cohort (before matching; $n = 860$)



Number at risk:

RARP	500	360	46	0
VMAT	360	284	99	0