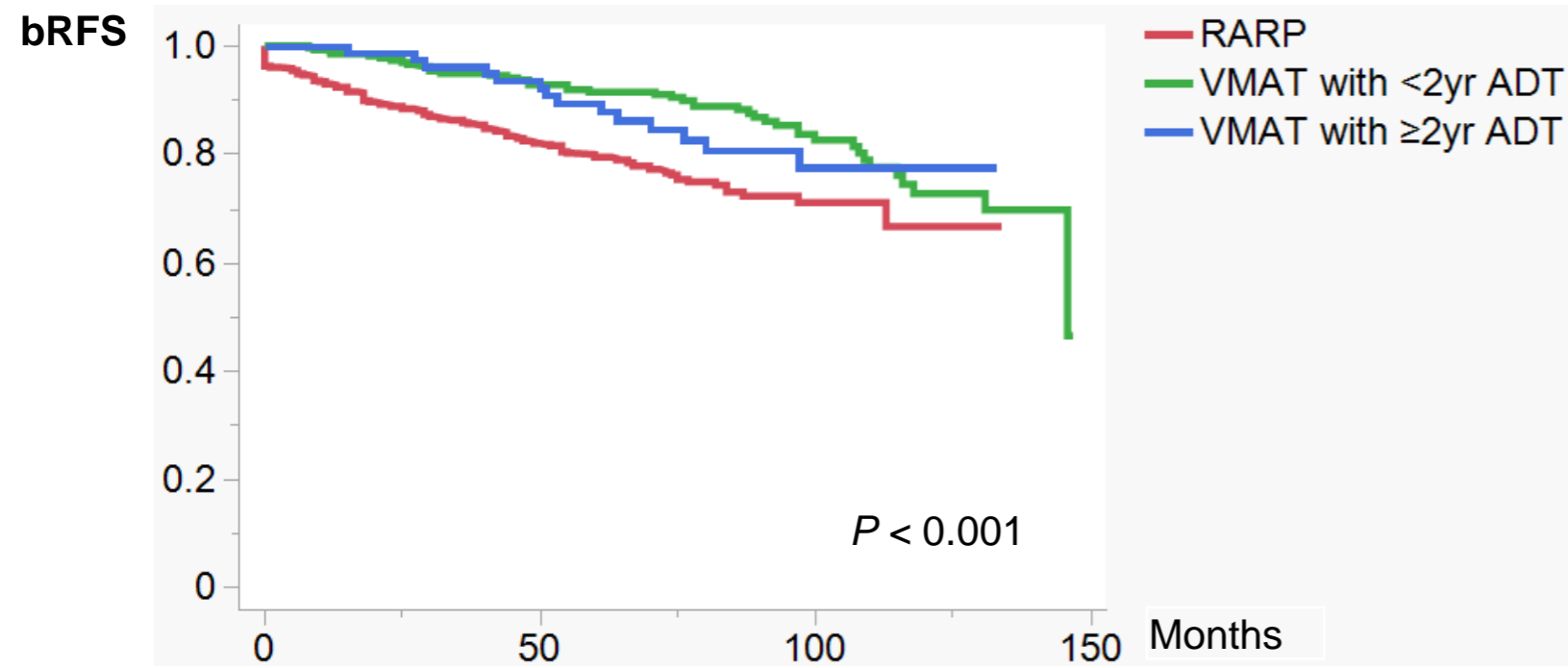


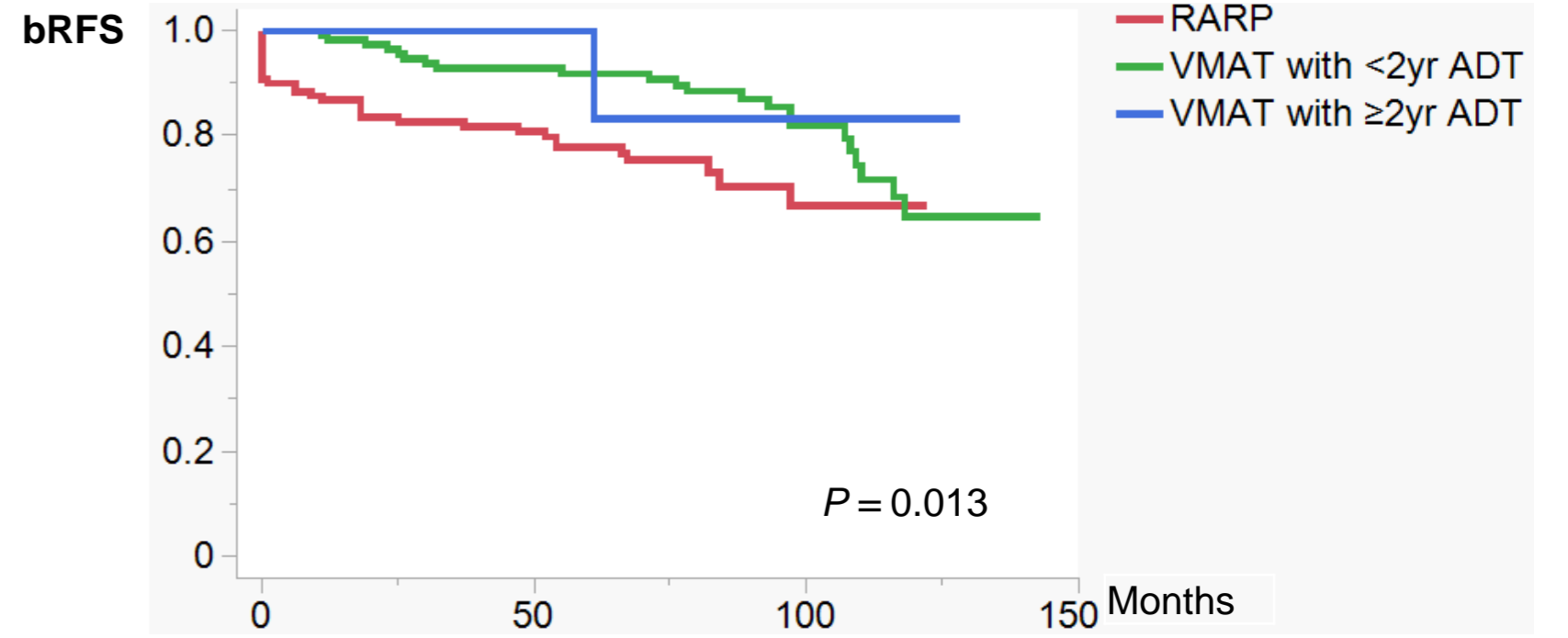
**(A) Original cohort (before matching;  $n = 860$ )**



Number at risk:				
	0	50	100	150
RARP	500	360	46	0
VMAT with <2yr ADT	272	214	82	0
VMAT with ≥2yr ADT	88	70	17	0

$P < 0.001$  (RARP vs VMAT with <2yr ADT)  
 $P = 0.55$  (VMAT with <2yr ADT vs VMAT with ≥2yr ADT)  
 $P = 0.071$  (RARP vs VMAT with ≥2yr ADT)

**(B) Matched cohort ( $n = 260$ )**



Number at risk:				
	0	50	100	150
RARP	130	85	11	0
VMAT with <2yr ADT	122	95	39	0
VMAT with ≥2yr ADT	8	7	2	0

$P = 0.004$  (RARP vs VMAT with <2yr ADT)  
 $P = 0.75$  (VMAT with <2yr ADT vs VMAT with ≥2yr ADT)  
 $P = 0.37$  (RARP vs VMAT with ≥2yr ADT)