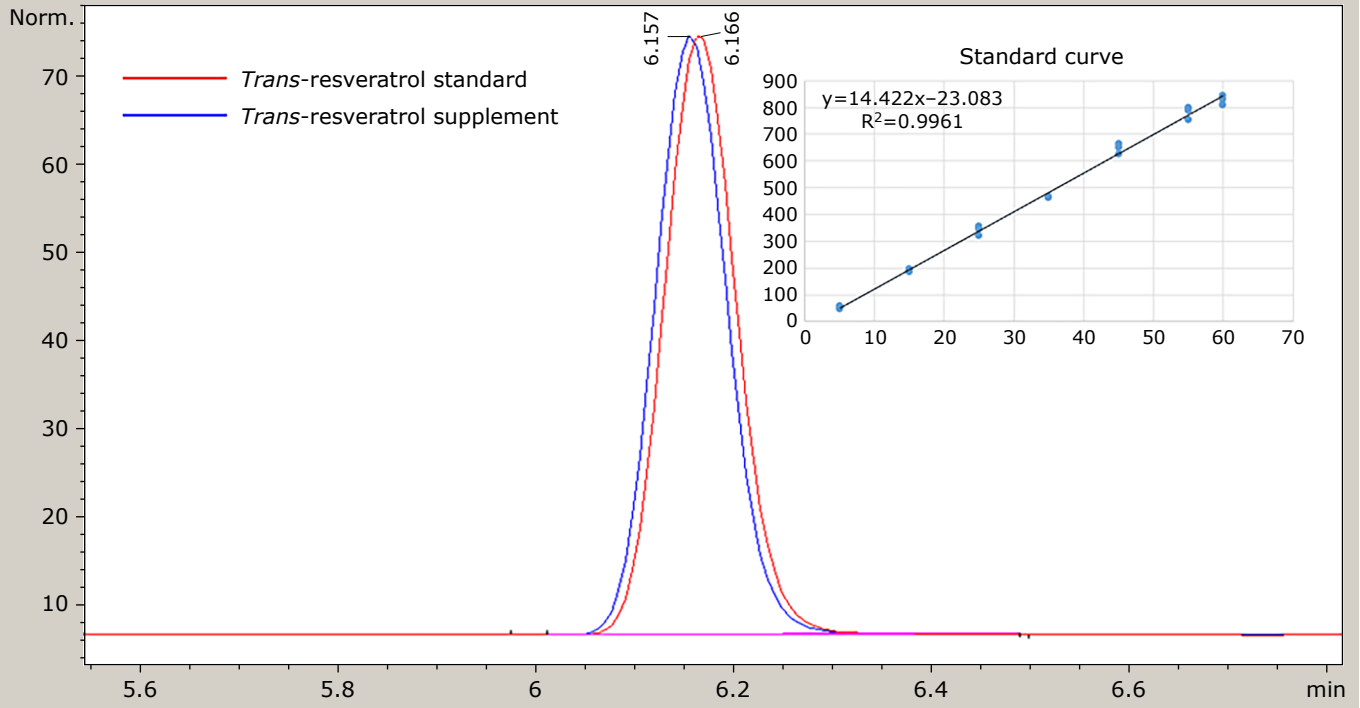


FLD1 A. Ex=310. Em=403 (TAMIREs\RESV06122019 2019-12-09 12-59-28\013-1301. D)
FLD1 A. Ex=310. Em=403 (TAMIREs\RESV06122019 2019-12-09 12-59-28\010-1001. D)



Supplemental Fig. 1. Peak of *trans*-resveratrol sample applied in the biological assay and standard (SIGMA - PHL89539).