

Supplemental information

**High CIB1 expression in colorectal cancer liver
metastases correlates with worse survival and the
replacement histopathological growth pattern**

Shuang Fan, Johannes Robert Fleischer, Lolita Dokshokova, Lena Sophie Böhme, Gwendolyn Haas, Alexandra Maria Schmitt, Fabio Bennet Gätje, Linde-Allegre Emmalie Rosen, Hanibal Bohnenberger, Michael Ghadimi, Baolong Cui, Xingbo Xu, Joanna Maria Kalucka, Florian Bösch, Tiago De Oliveira, and Lena-Christin Conradi

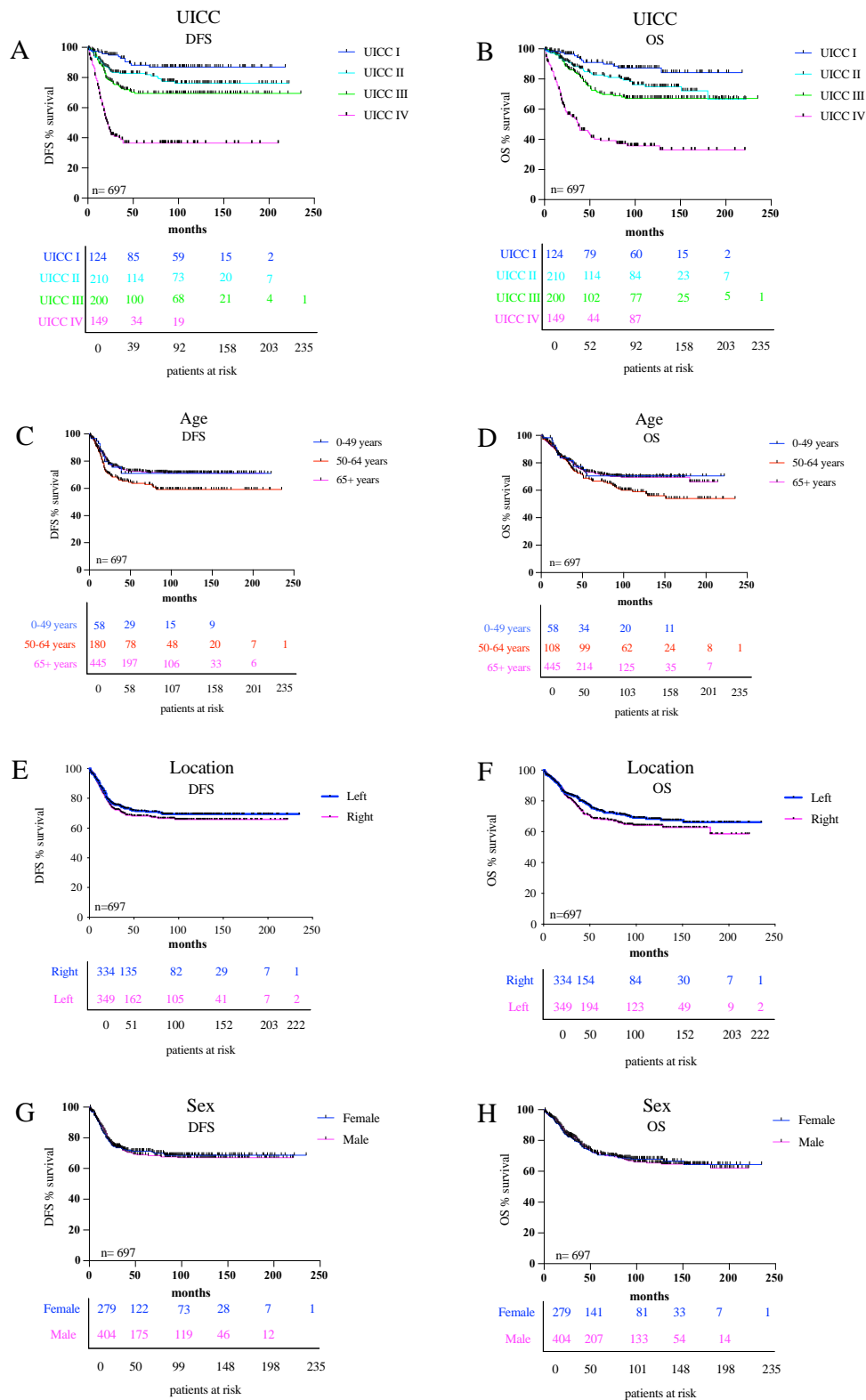


Figure S1. Correlation between Survival and UICC Stage, Independent of Age, Distribution, and Gender in Cancer Patients. (A-B) Kaplan-Meier curves: OS and DFS in a cohort of 697 CRC patients classified according to the pUICC. (C-D) Kaplan-Meier curves: OS and DFS in a cohort of 697 CRC patients classified according to the different age groups. (E-F) Kaplan-Meier curves: OS and DFS in a cohort of 697 CRC patients classified according to the tumor location (right vs. left). (G-H) Kaplan-Meier curves: OS and DFS in a cohort of 697 CRC patients classified according to the sex.

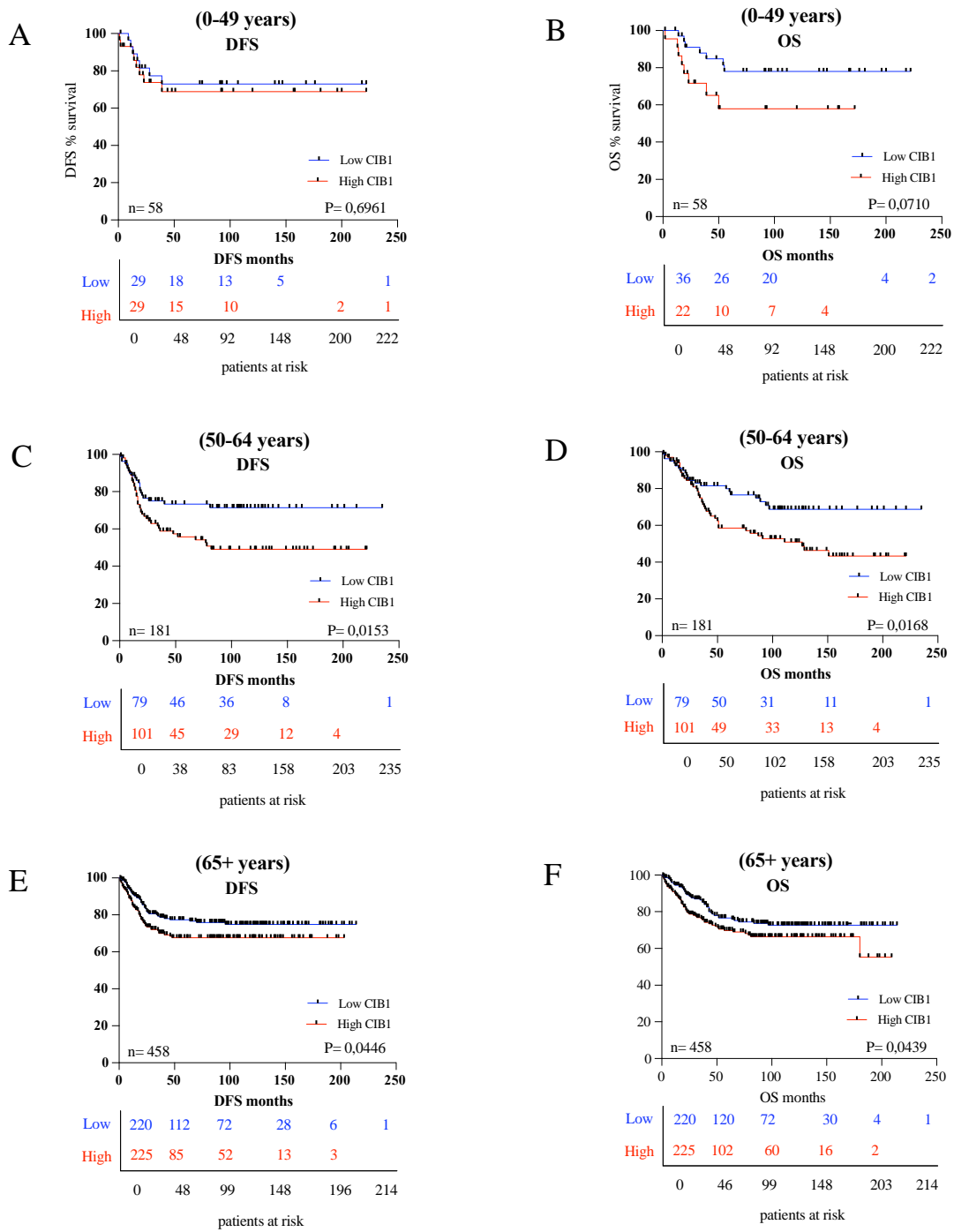


Figure S2. Comparison of OS and DFS curves for features related to CIB1 protein expression in different age groups of patients with colorectal cancer. (A and B) Kaplan-Meier curves: OS and DFS in a cohort of 58 CRC patients in the age group 0-49 years. (C and D) Kaplan-Meier curves: OS and DFS in a cohort of 181 CRC patients in the age group 50-64 years. (E and F) Kaplan-Meier curves: OS and DFS in a cohort of 458 CRC patients in the age group 65 years and older.

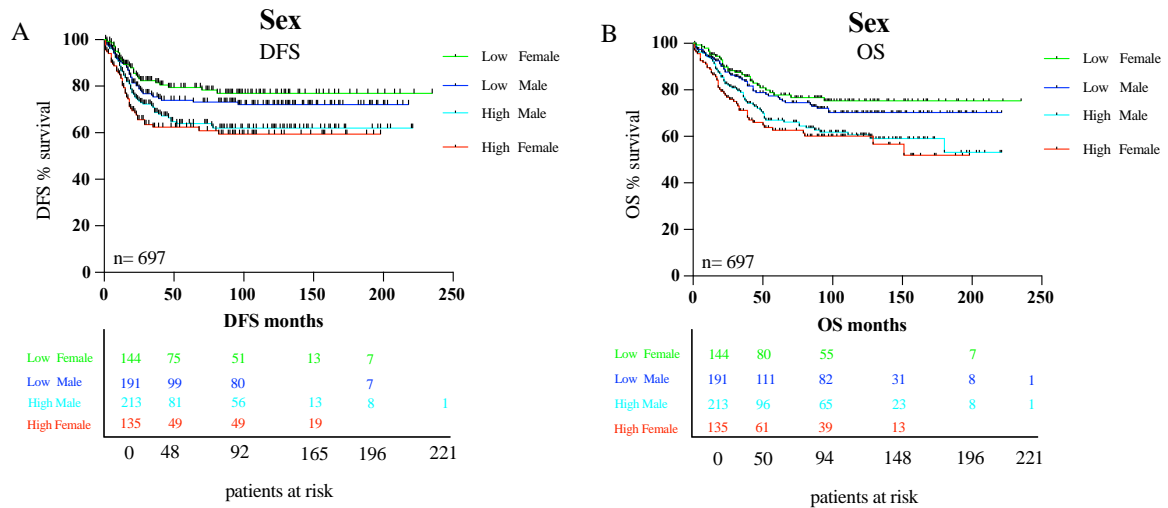


Figure S3. Expression-associated features of CIB1 protein in colorectal cancer patients across gender groups. (A) Kaplan-Meier curves: OS in a cohort of 697 CRC patients stratified for high and low protein expression of CIB1 classified according to the Sex. (B) Kaplan-Meier curves: DFS in a cohort of 697 CRC patients stratified for high and low protein expression of CIB1 classified according to the sex.

A CIB1 expression in a bulk seq dataset

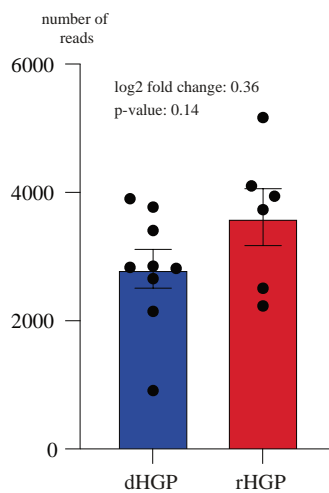


Figure S4. CIB1 expression in bulk sequencing data set. (A) bar plot: differential gene expression analysis of 9 dHGP vs 6 rHGP cancer samples of bulkRNA sequencing.

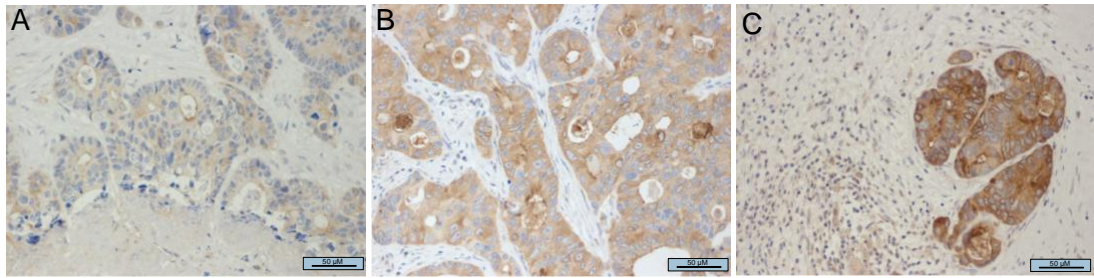


Figure S5. Immunohistochemical staining of CIB-1: colorectal cancer liver metastases. (A) Representative immunohistochemical staining: CRCLM with weak CIB1 expression. (B) Representative immunohistochemical staining: CRCLM with moderate CIB1 expression. (C) Representative immunohistochemical staining: CRCLM with strong CIB1 expression.