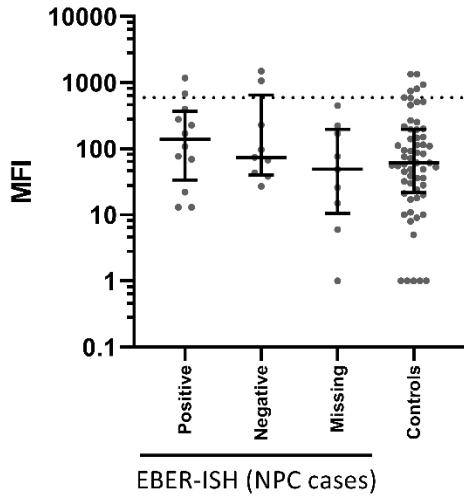
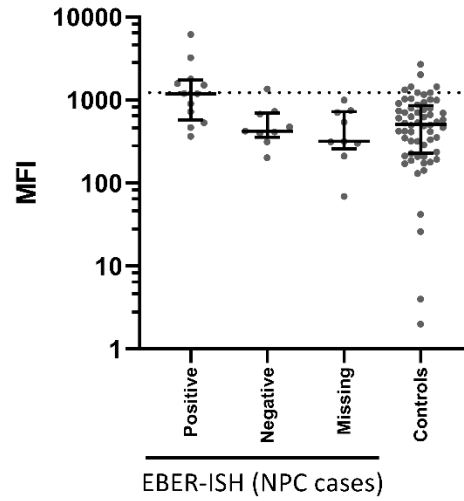


Supplementary Figure 1. Median fluorescence intensity (MFI) values for 15 IgA and IgG antibodies. MFI values of all incident cases were split into Epstein-Barr virus small RNA 1 in situ hybridization (EBER-ISH) positive cases, EBER-ISH negative cases, cases with unknown EBER-ISH status and controls. For serial samples, only the sample closest to diagnosis was included. Cut-offs are based on receiver operating characteristic (ROC) analysis to yield 90% seronegatives in the control group, i.e. 90% specificity.

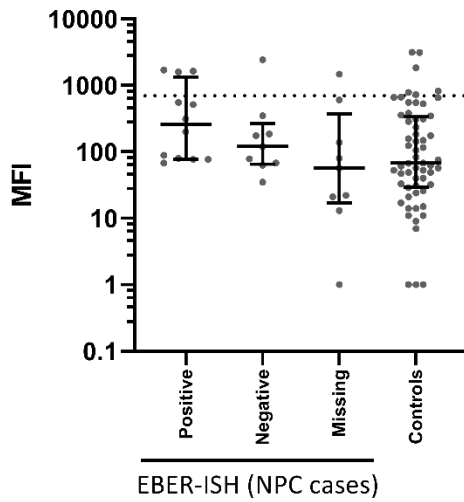
Zebra IgA



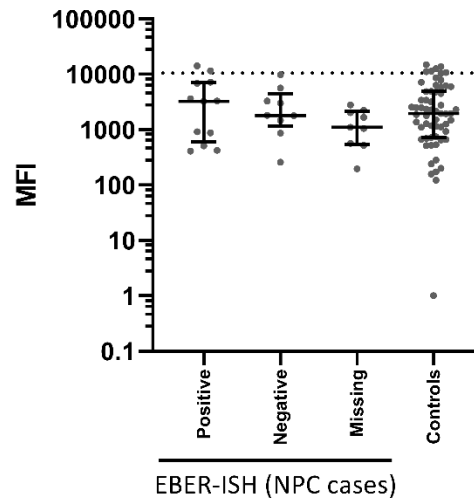
EBNA1trunc IgA



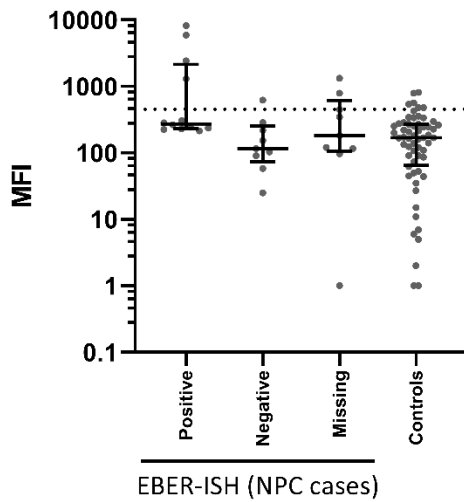
EA-D IgA



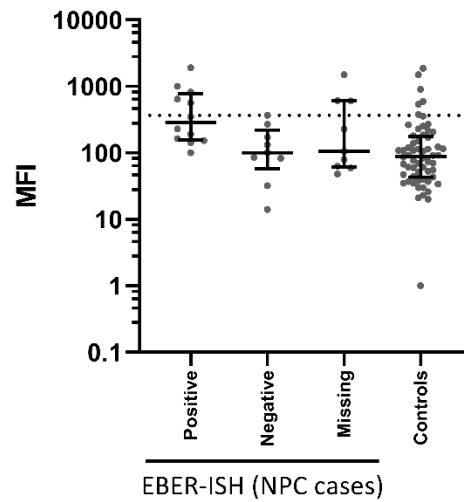
VCAp18 IgA

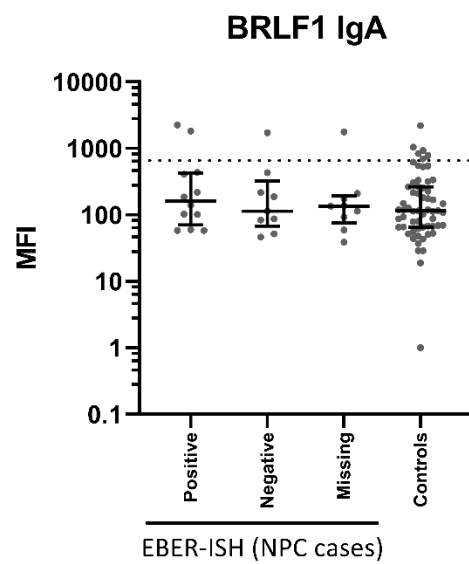
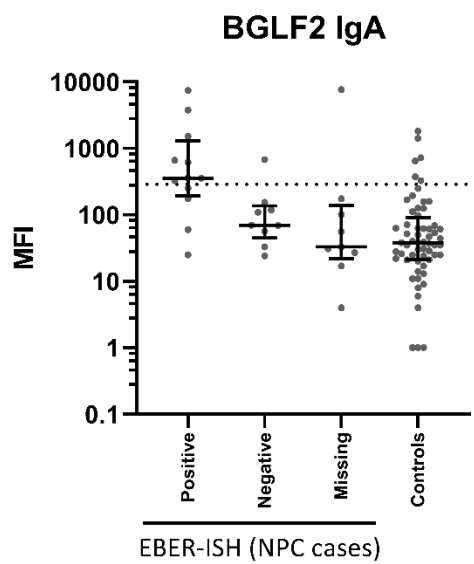
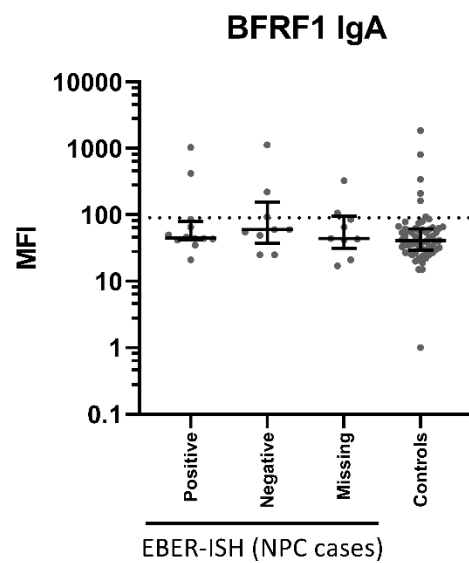
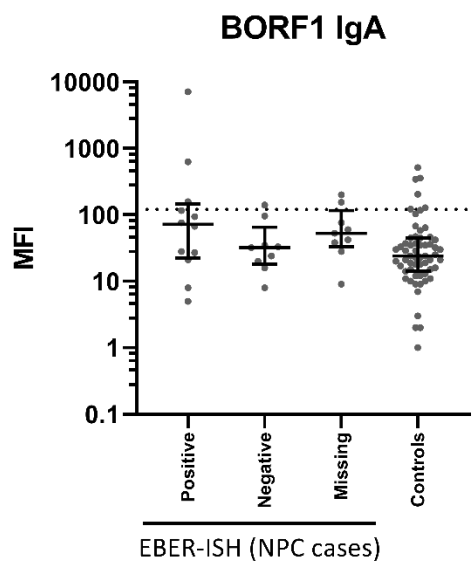
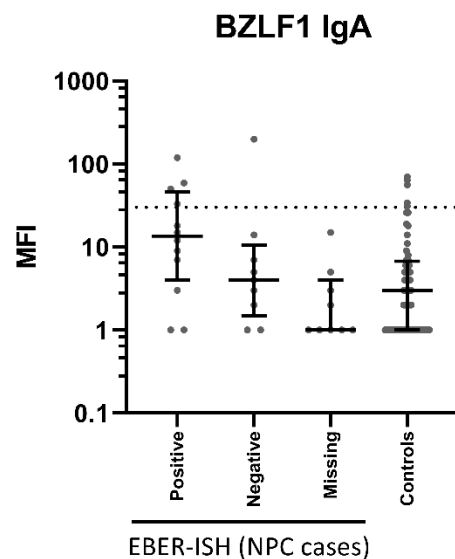
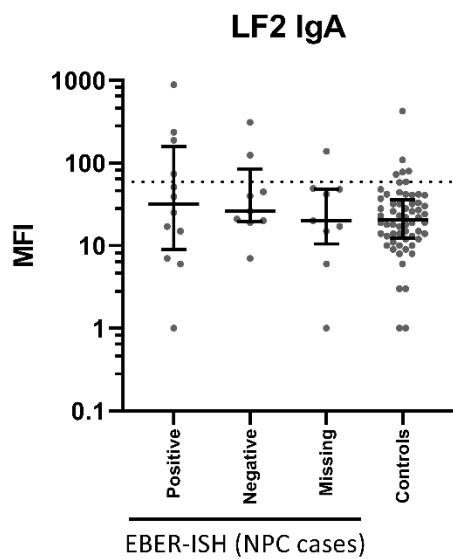


EBNA1pep IgA

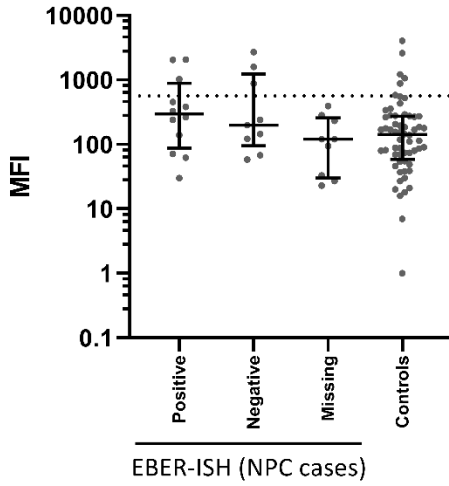


BXLF1 IgA

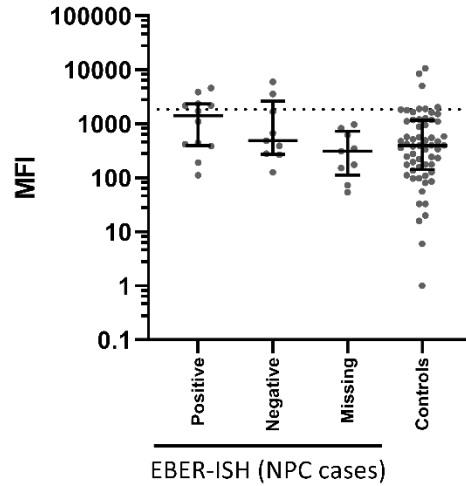




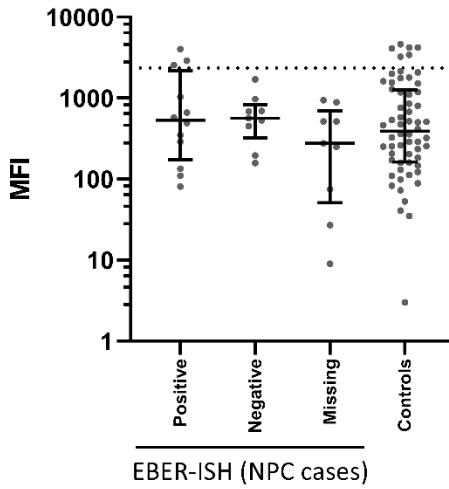
BPLF1 IgA



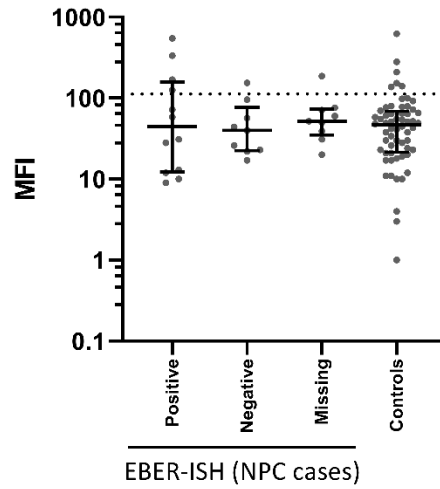
VCAp40 IgA



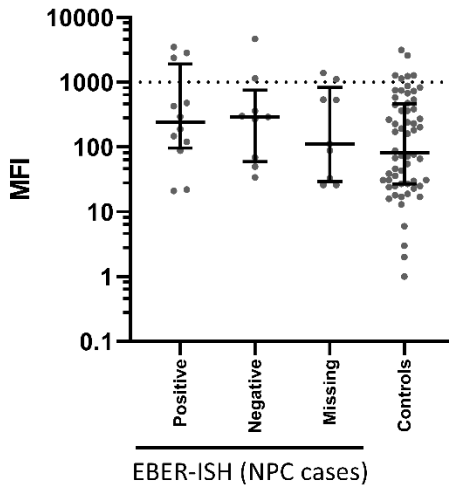
BHRF1 IgA



BBRF1 IgA

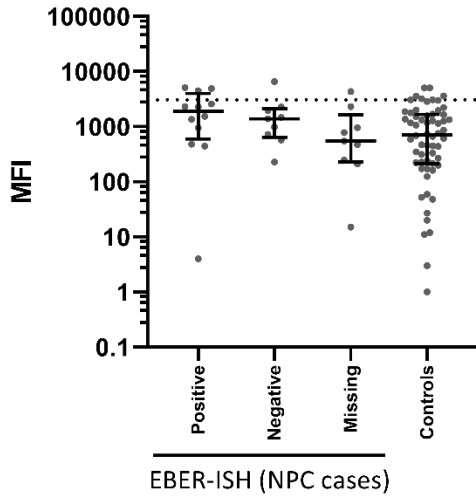


BaRF1 IgA

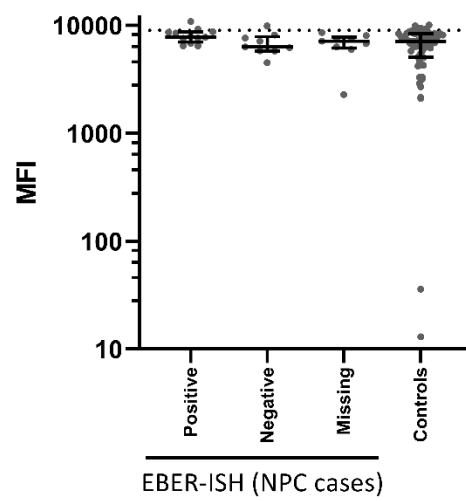


MFI = Median fluorescence intensity

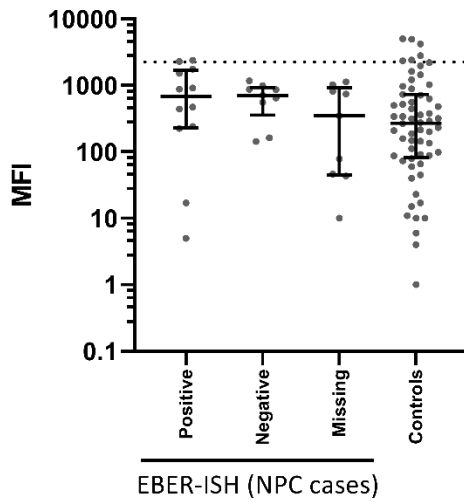
Zebra IgG



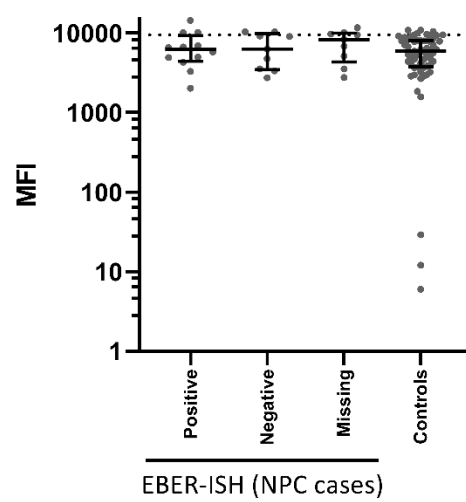
EBNA1trunc IgG



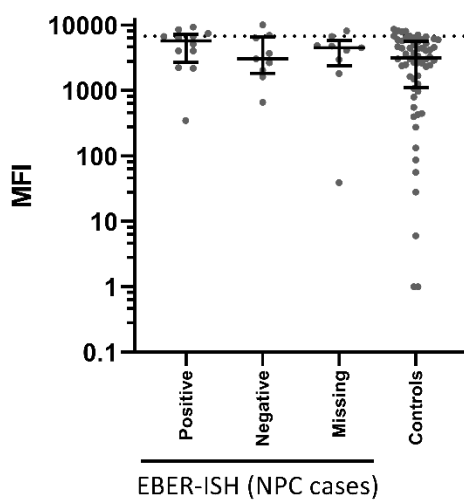
EA-D IgG



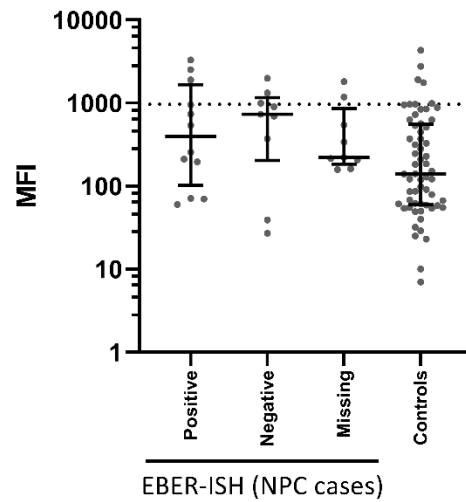
VCAP18 IgG

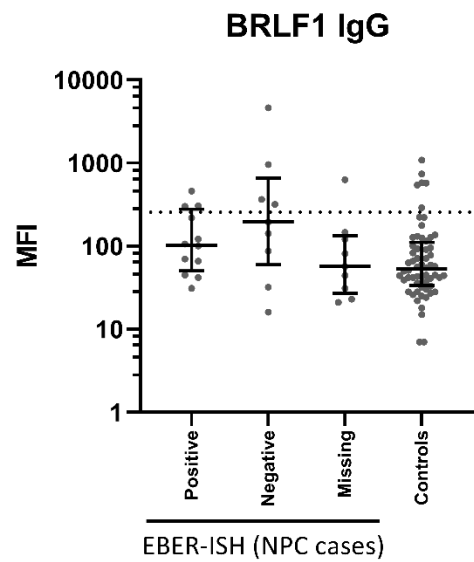
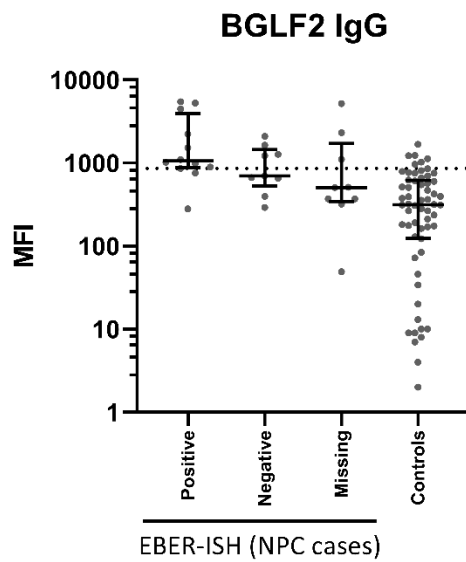
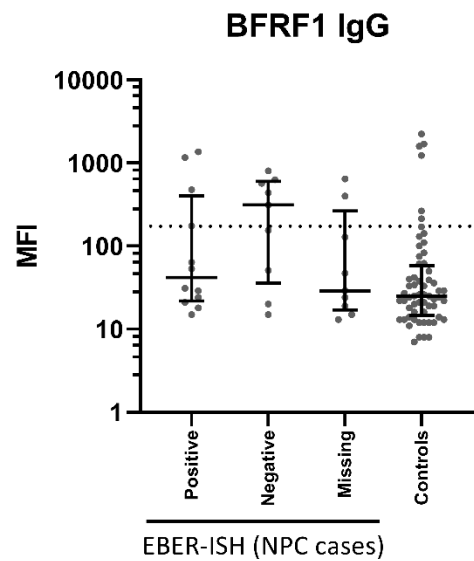
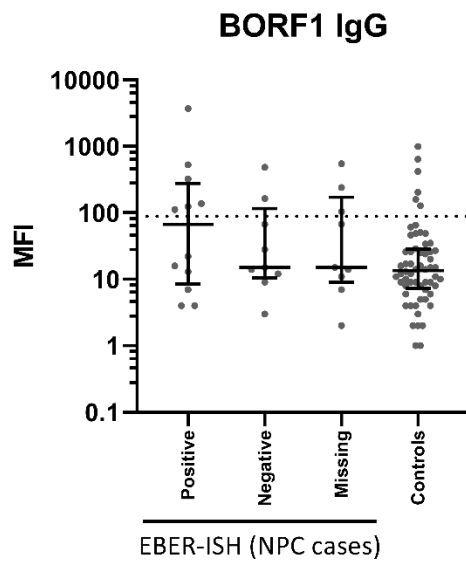
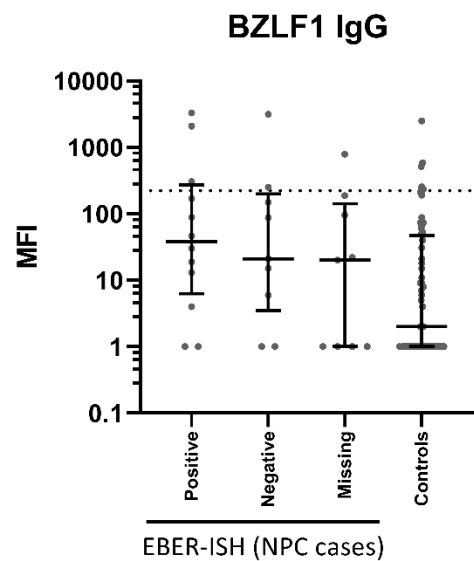
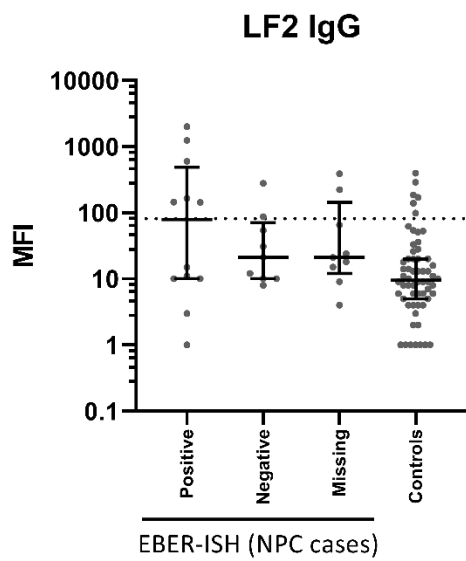


EBNA1pep IgG

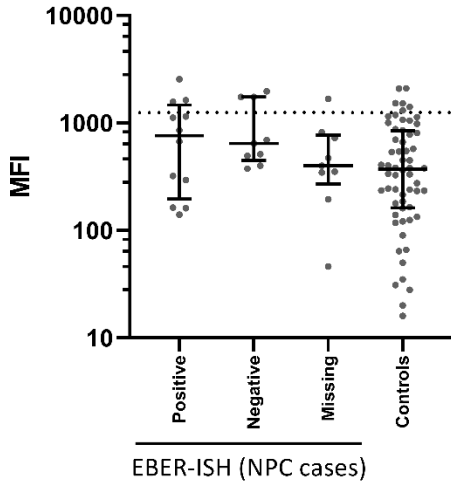


BXLF1 IgG

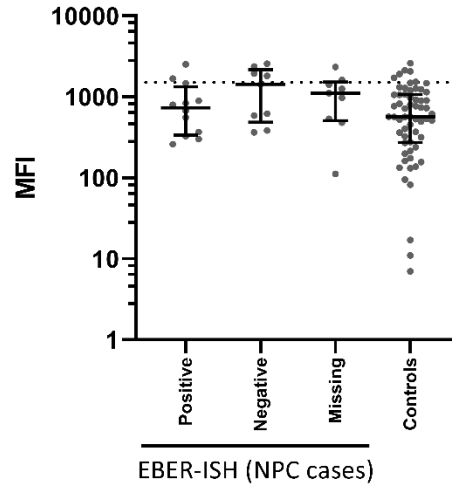




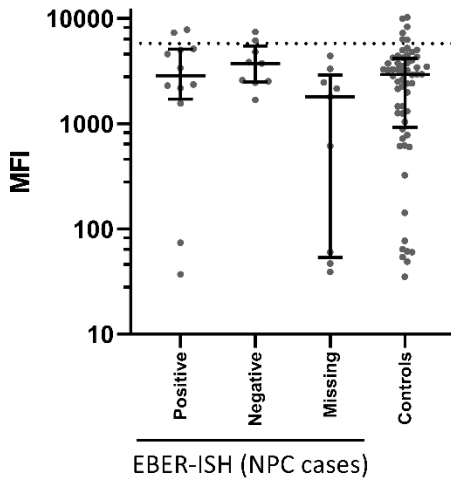
BPLF1 IgG



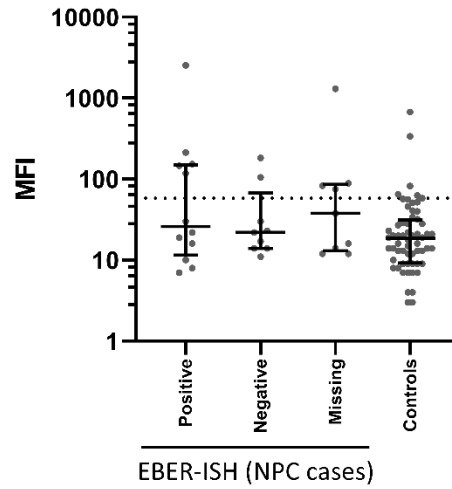
VCAP40 IgG



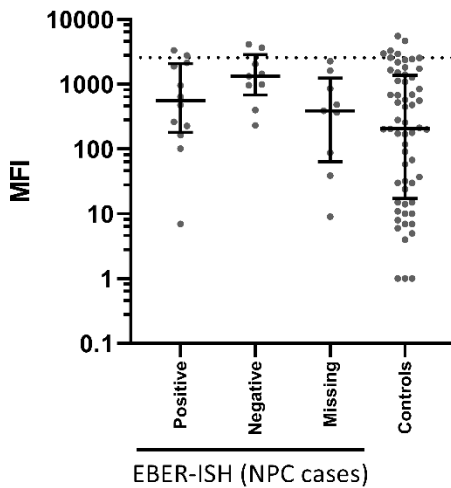
BHRF1 IgG



BBRF1 IgG



BaRF1 IgG



MFI = Median fluorescence intensity