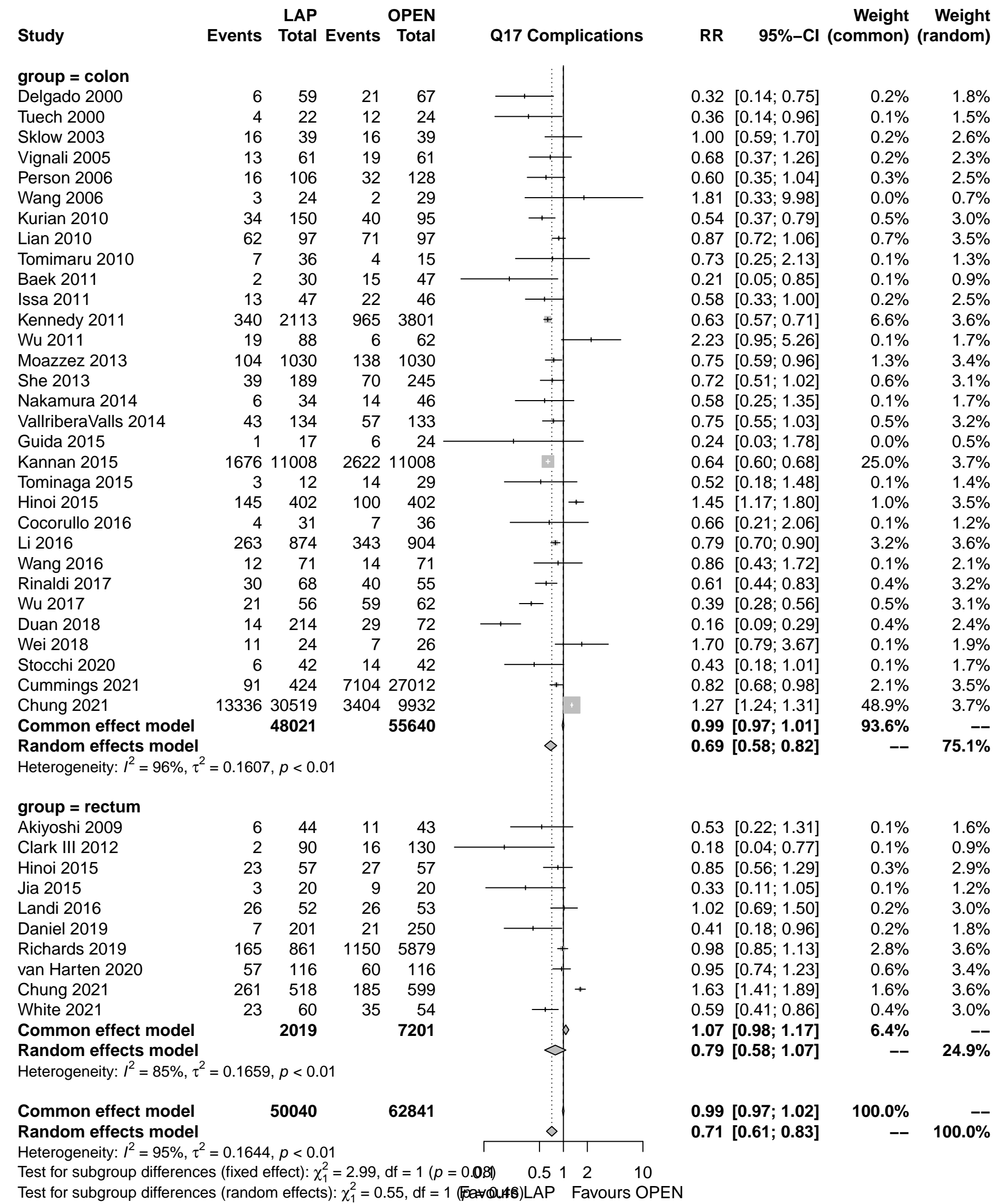
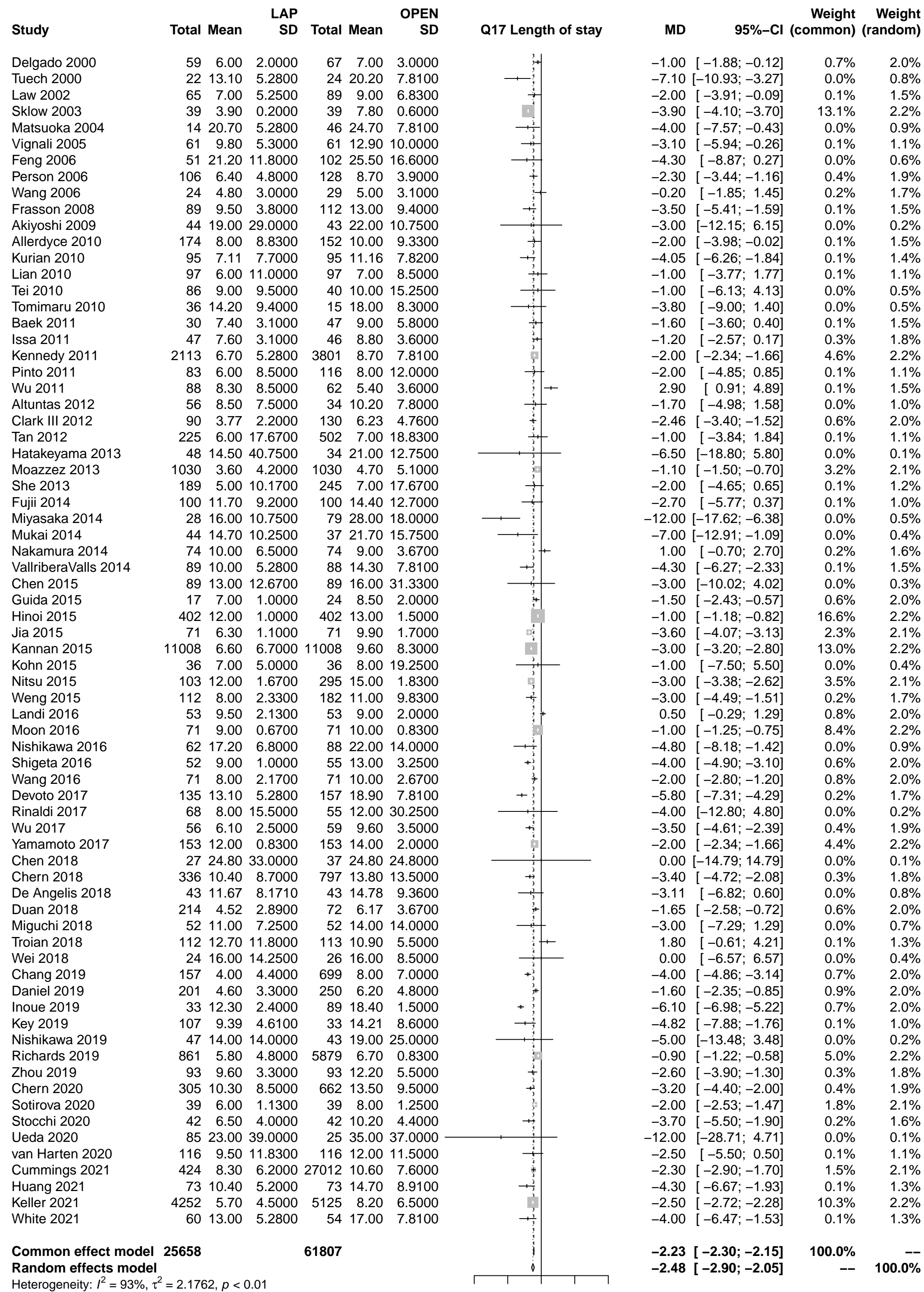


Q17 Complications - Subgroups

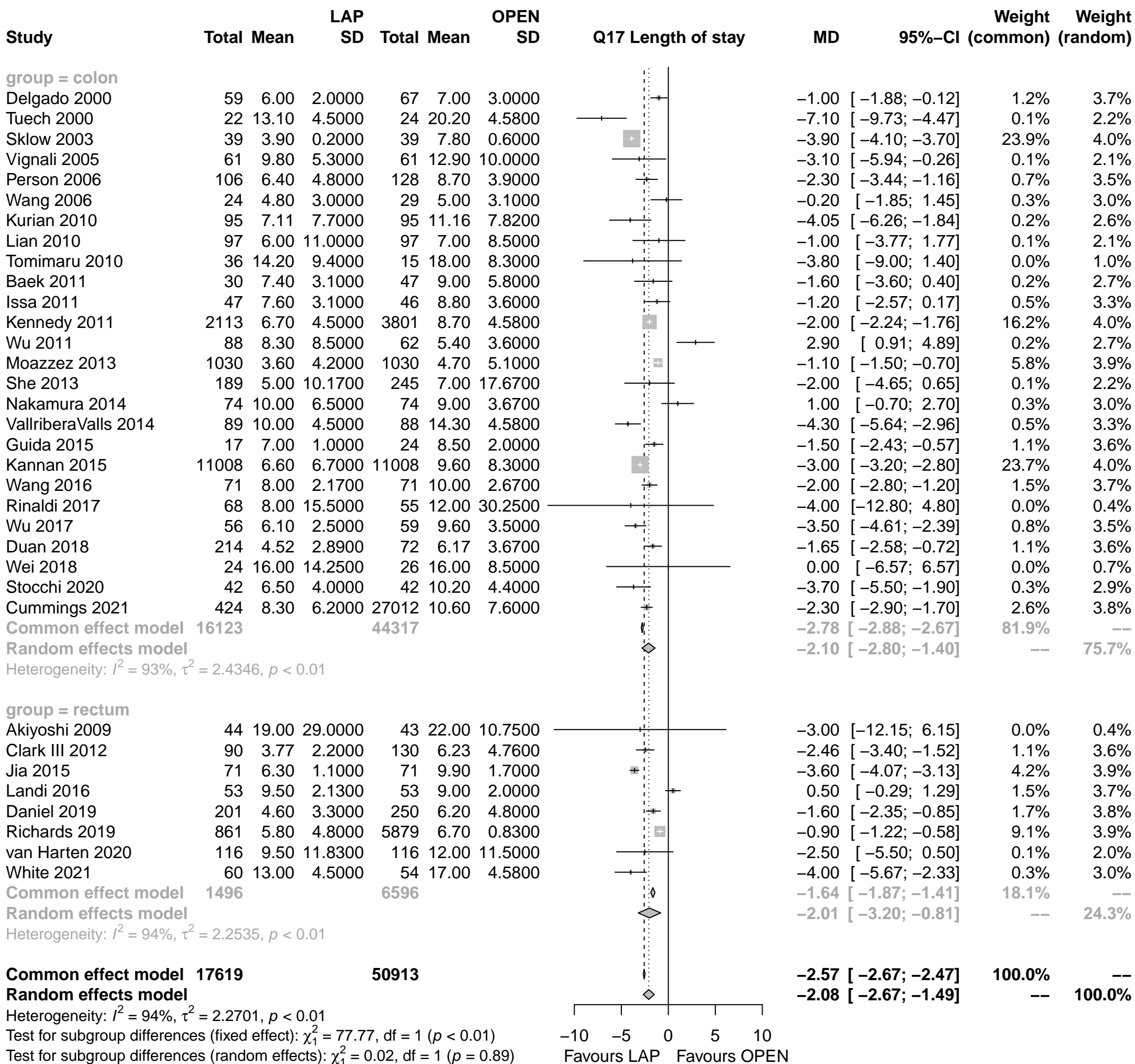


## Q17 Length of Stay

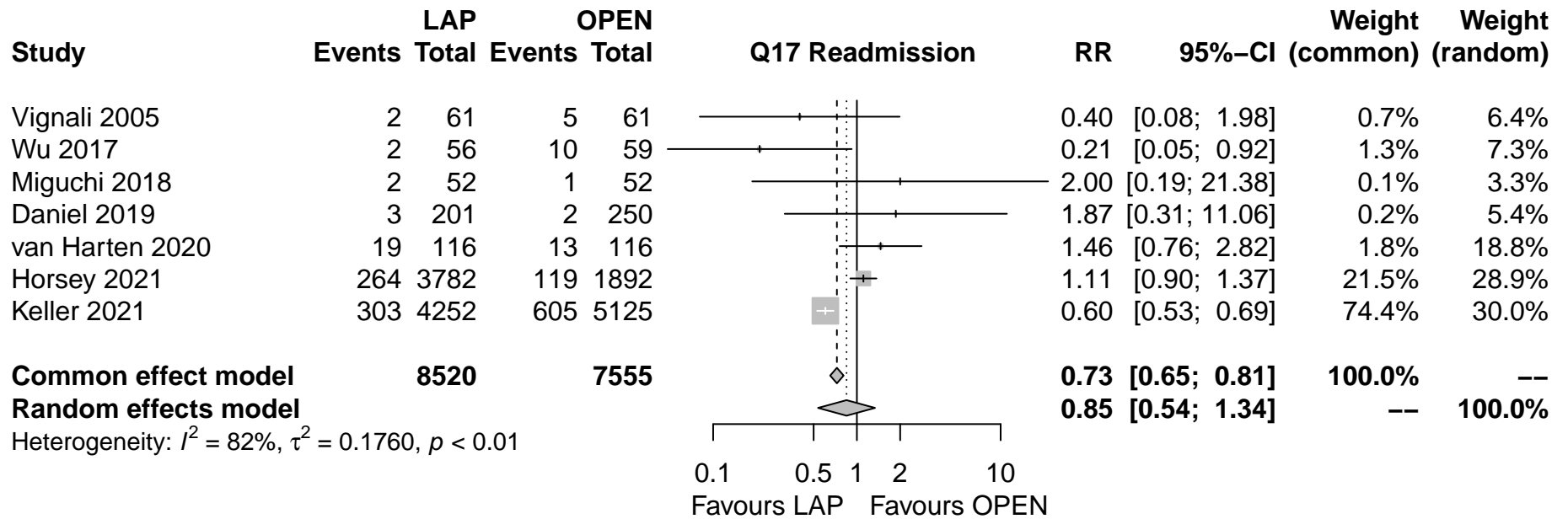


-20 -10 0 10 20  
Favours LAP Favours OPEN

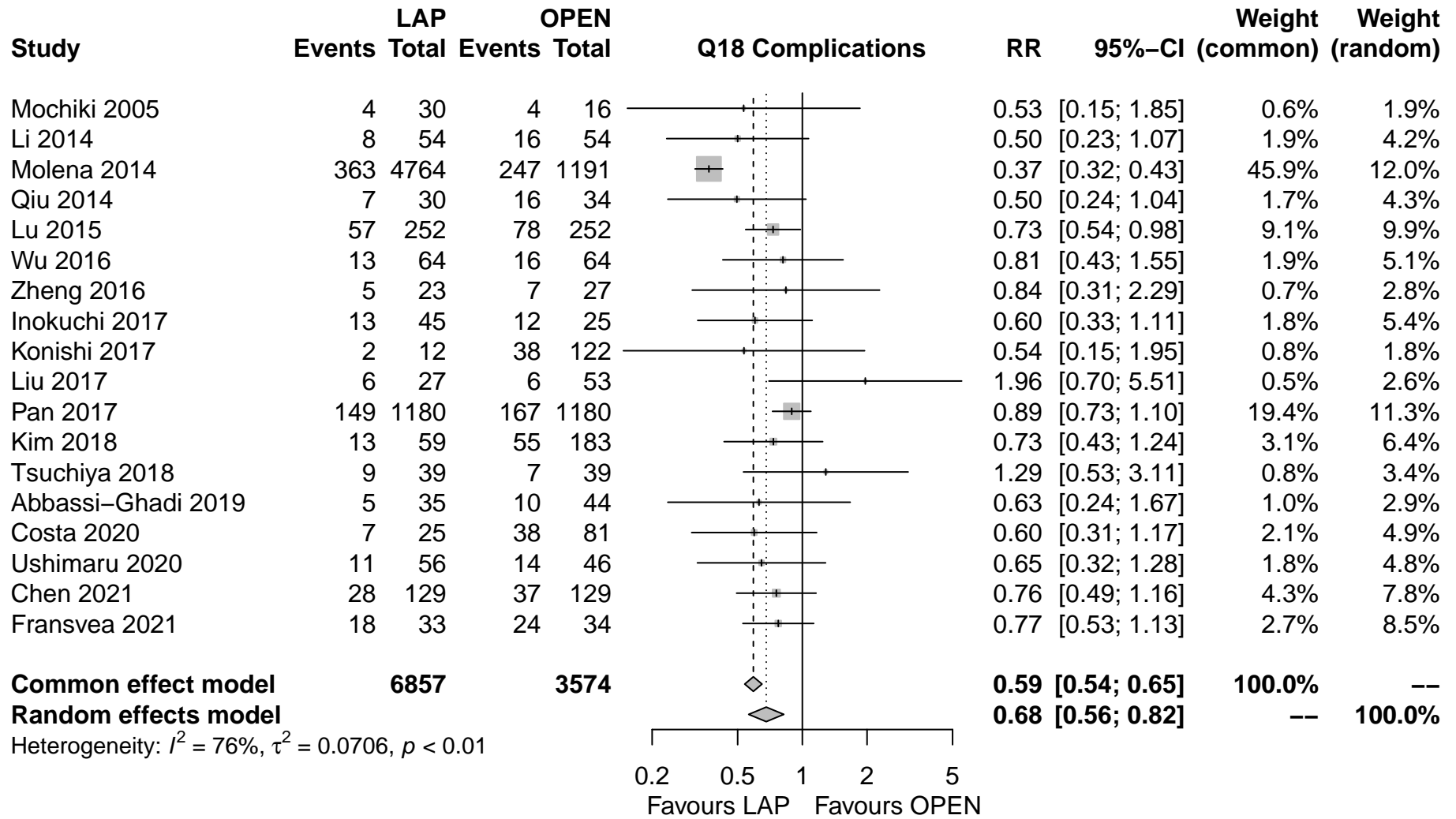
## Q17 Length of Stay - Subgroups



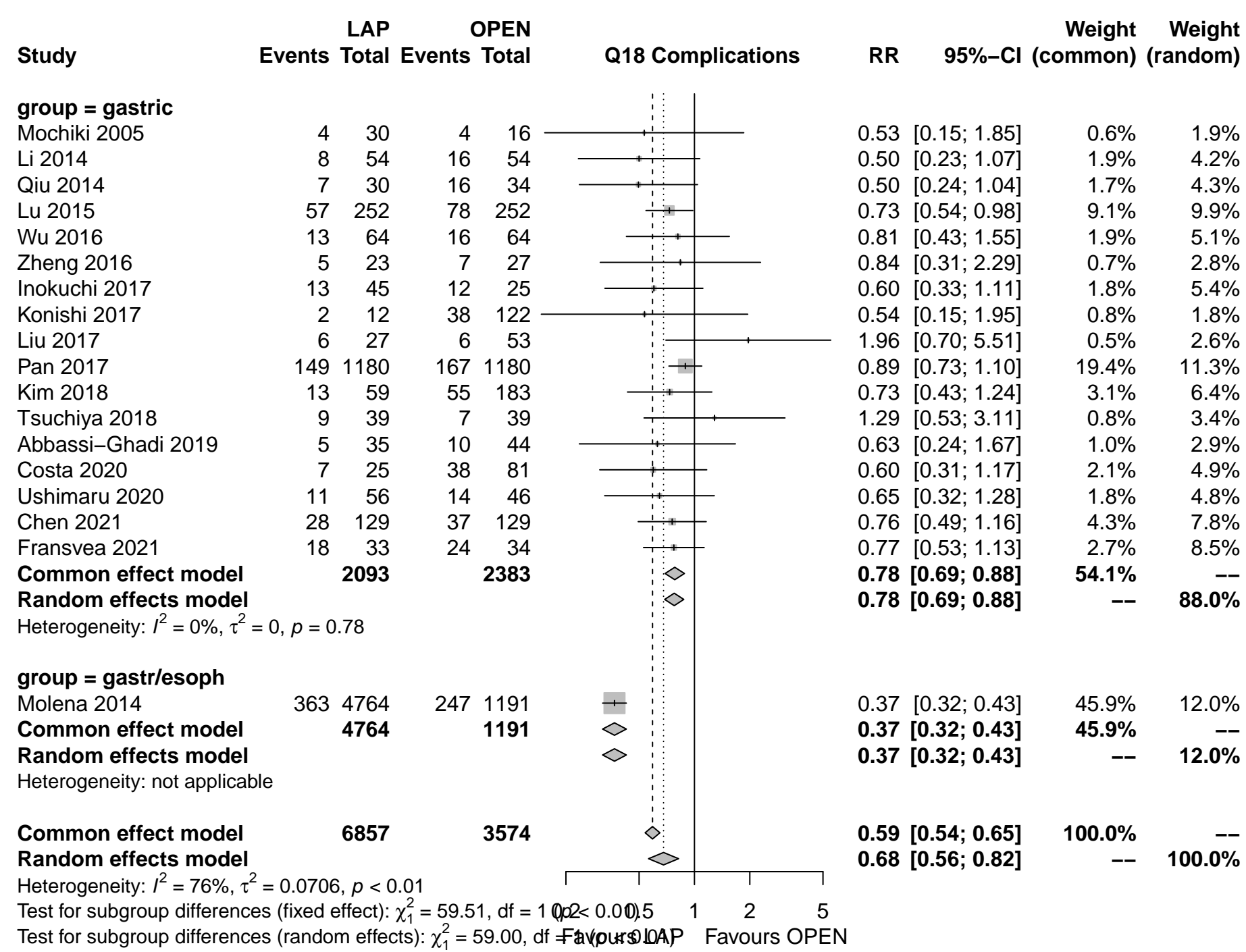
Q17 Readmissions



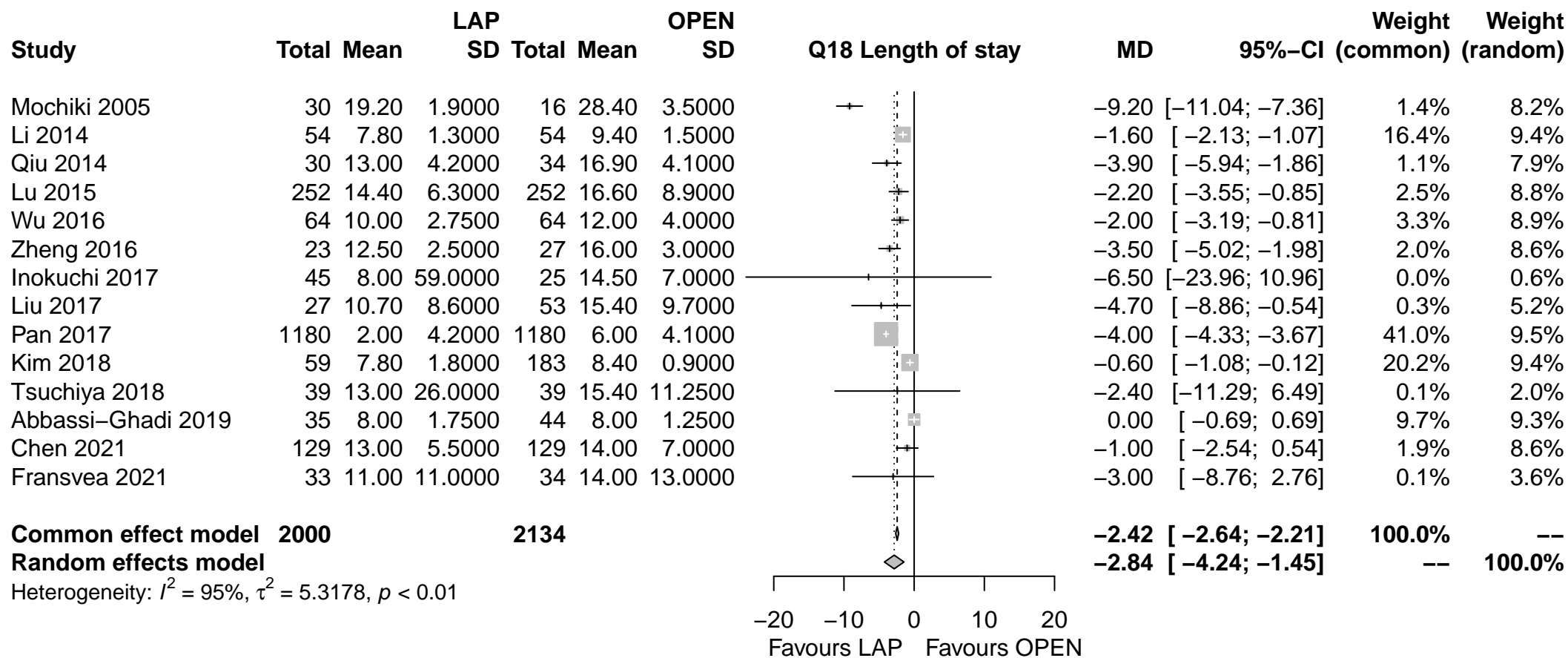
Q18 Complications



Q18 Complications - Subgroups

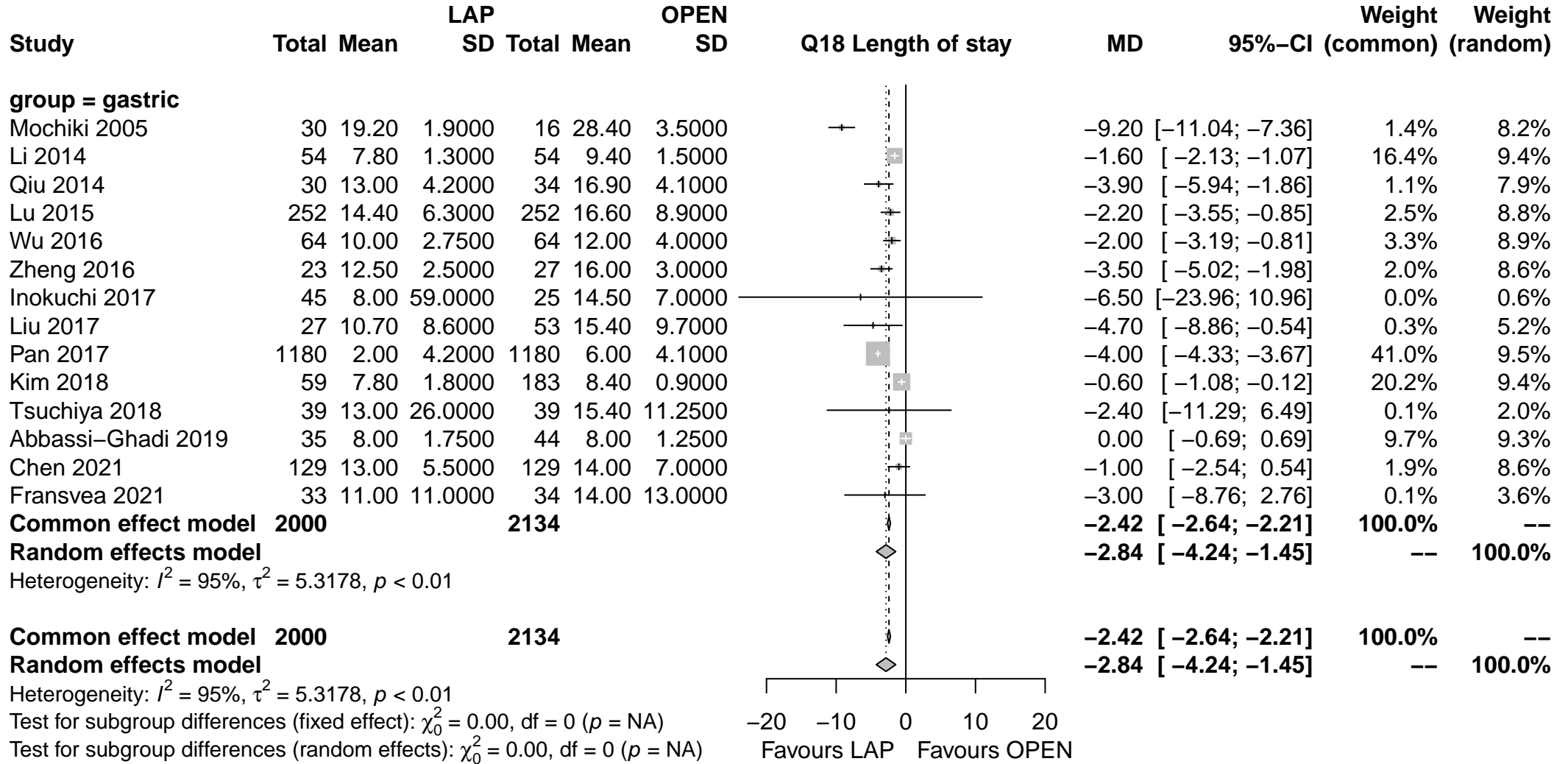


Q18 Length of stay

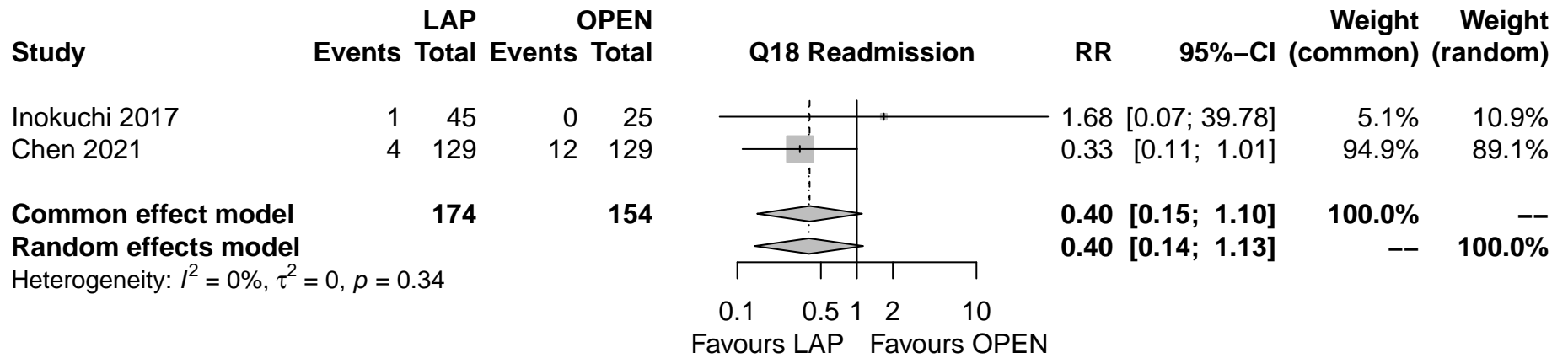




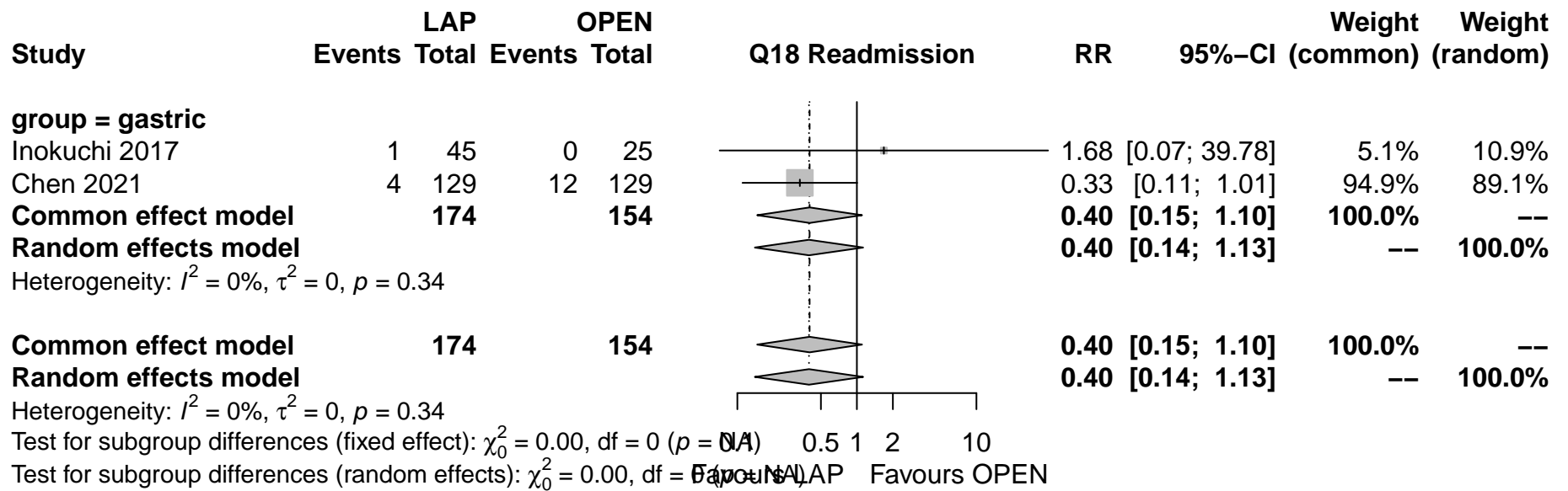
Q18 Length of stay - Subgroups



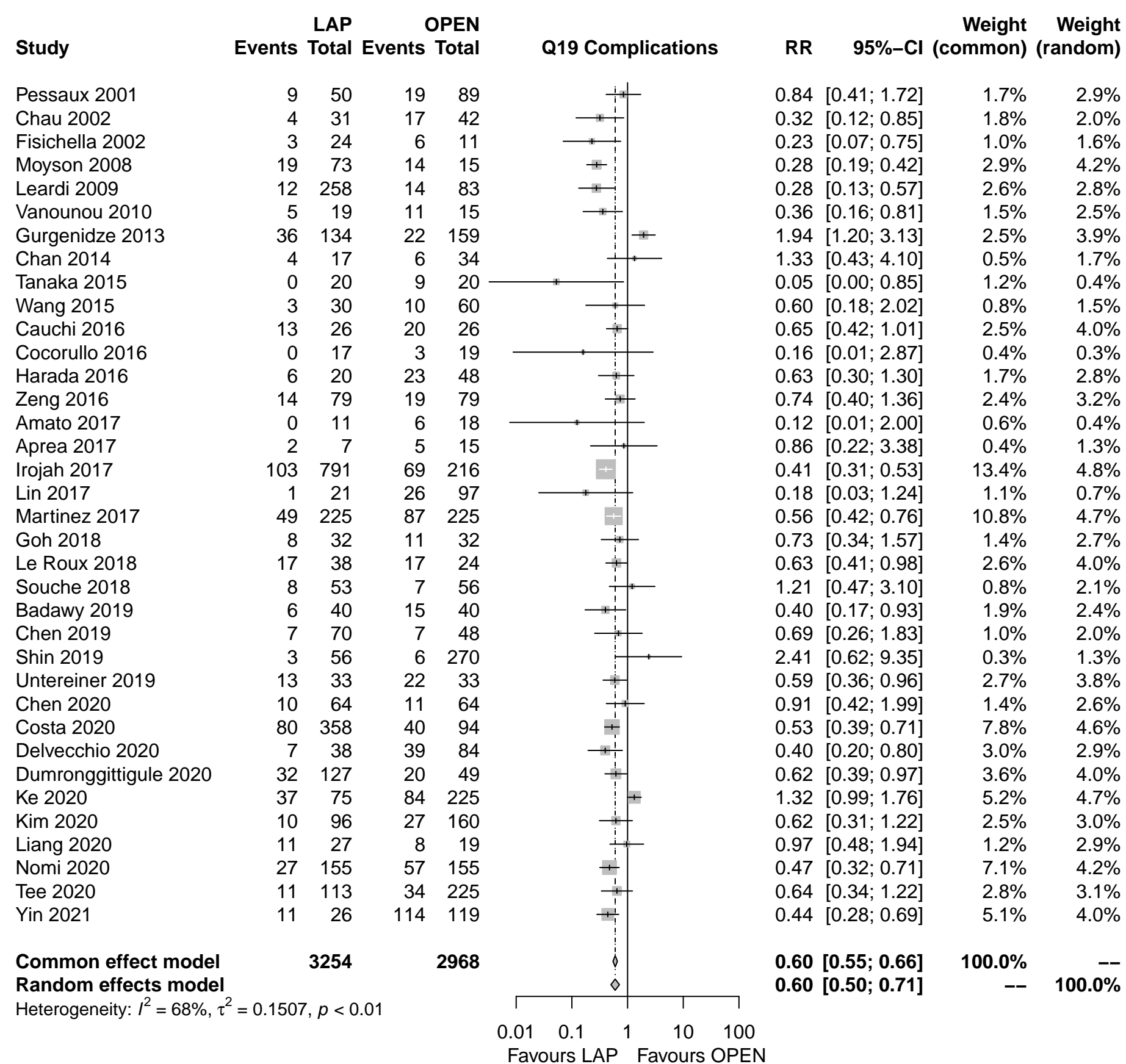
Q18 Readmission



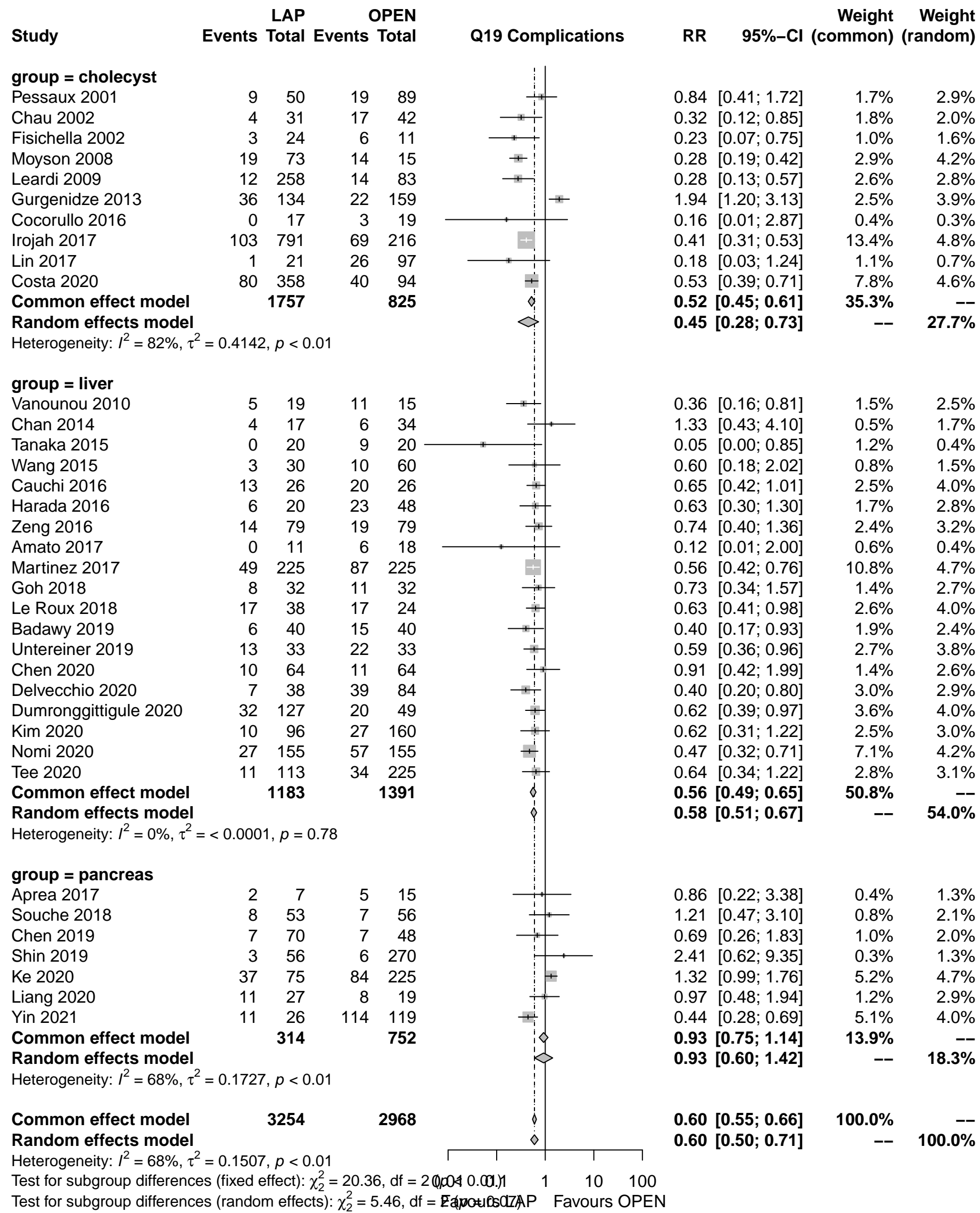
Q18 Readmission - Subgroups



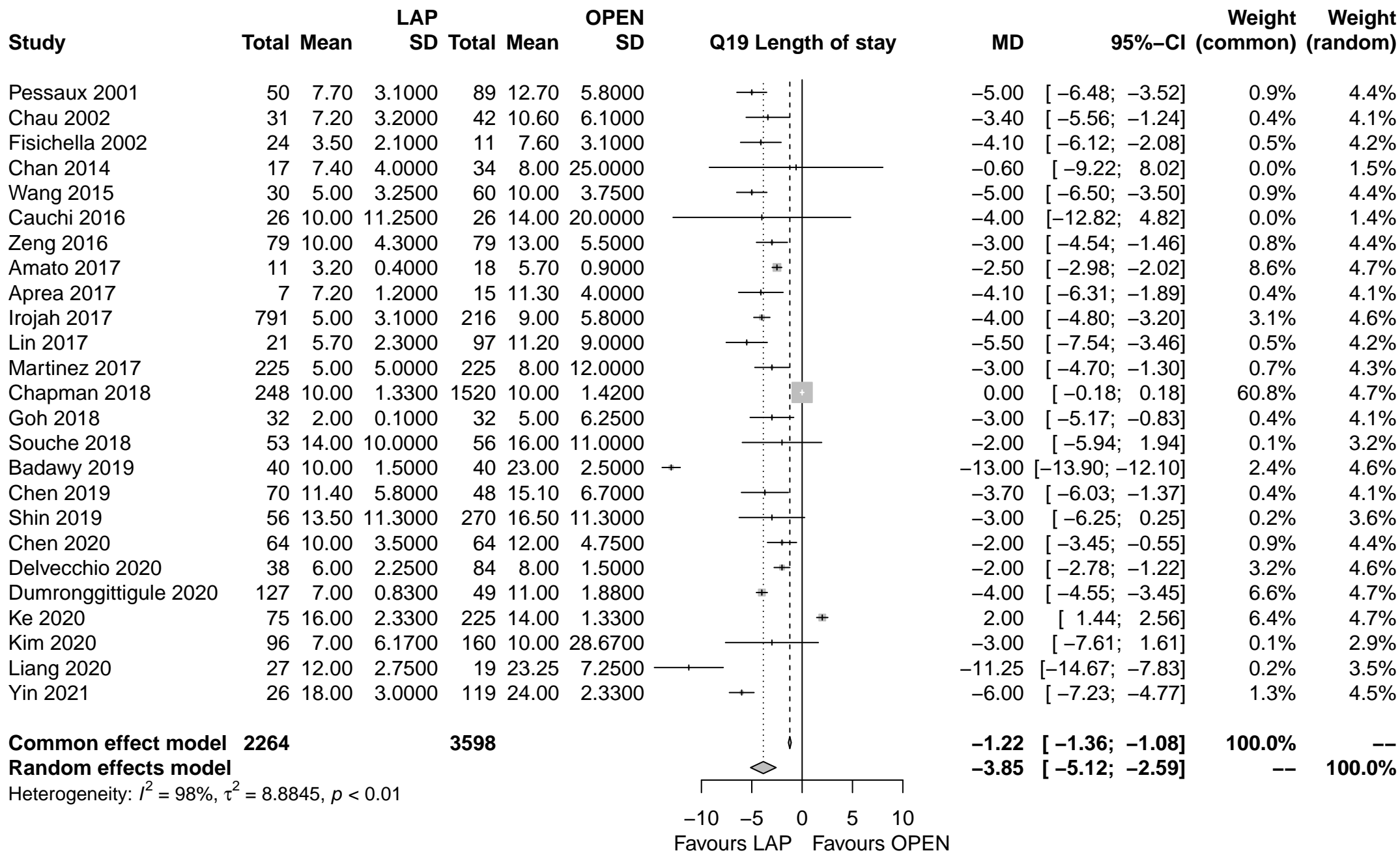
Q19 Complications



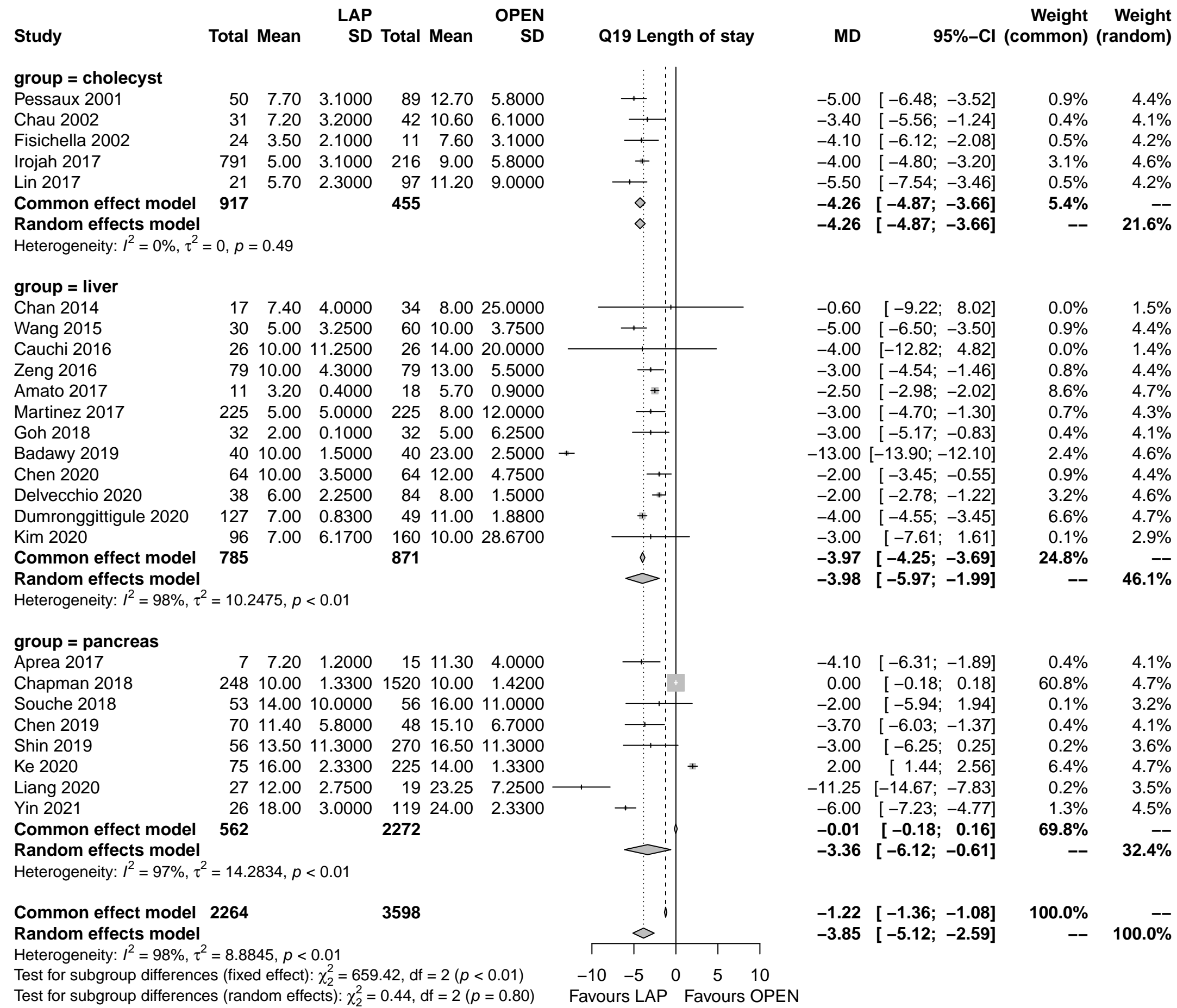
Q19 Complications - Subgroups



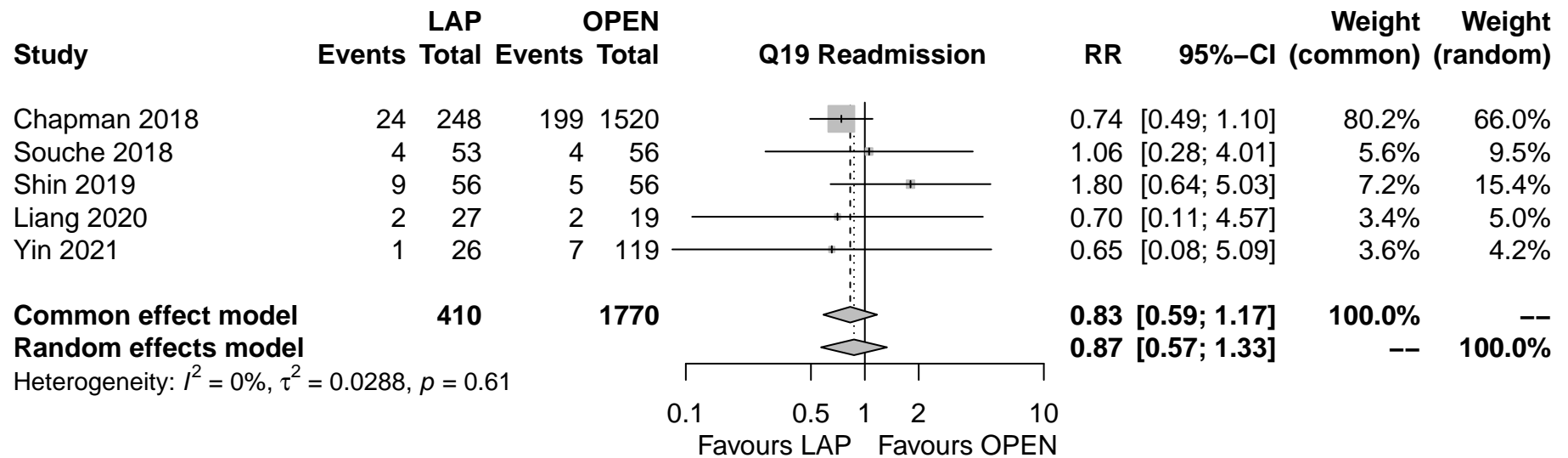
Q19 Length of stay



Q19 Length of stay - Subgroups

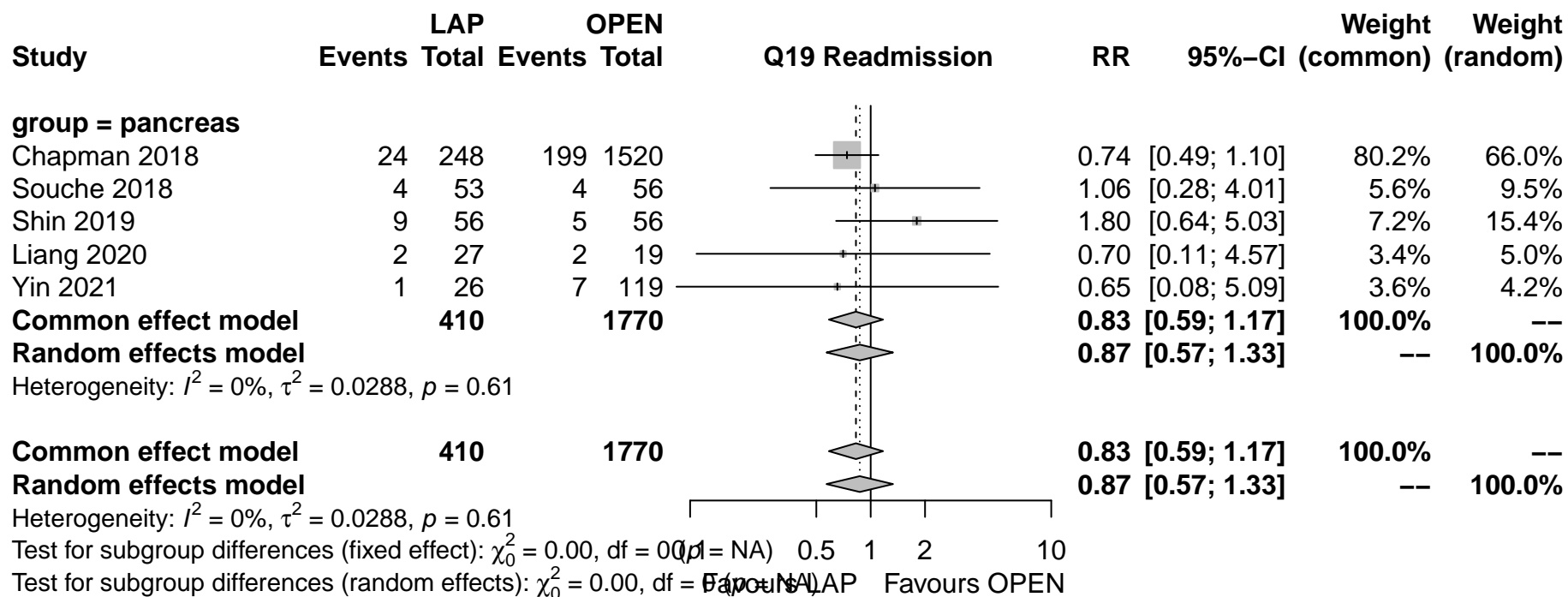


Q19 Readmission

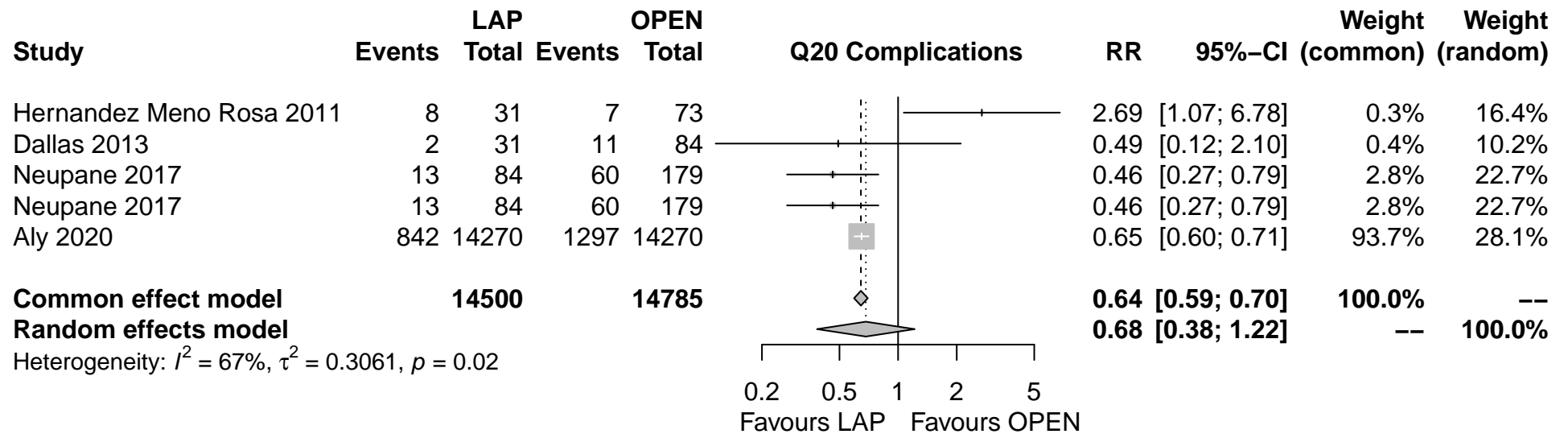




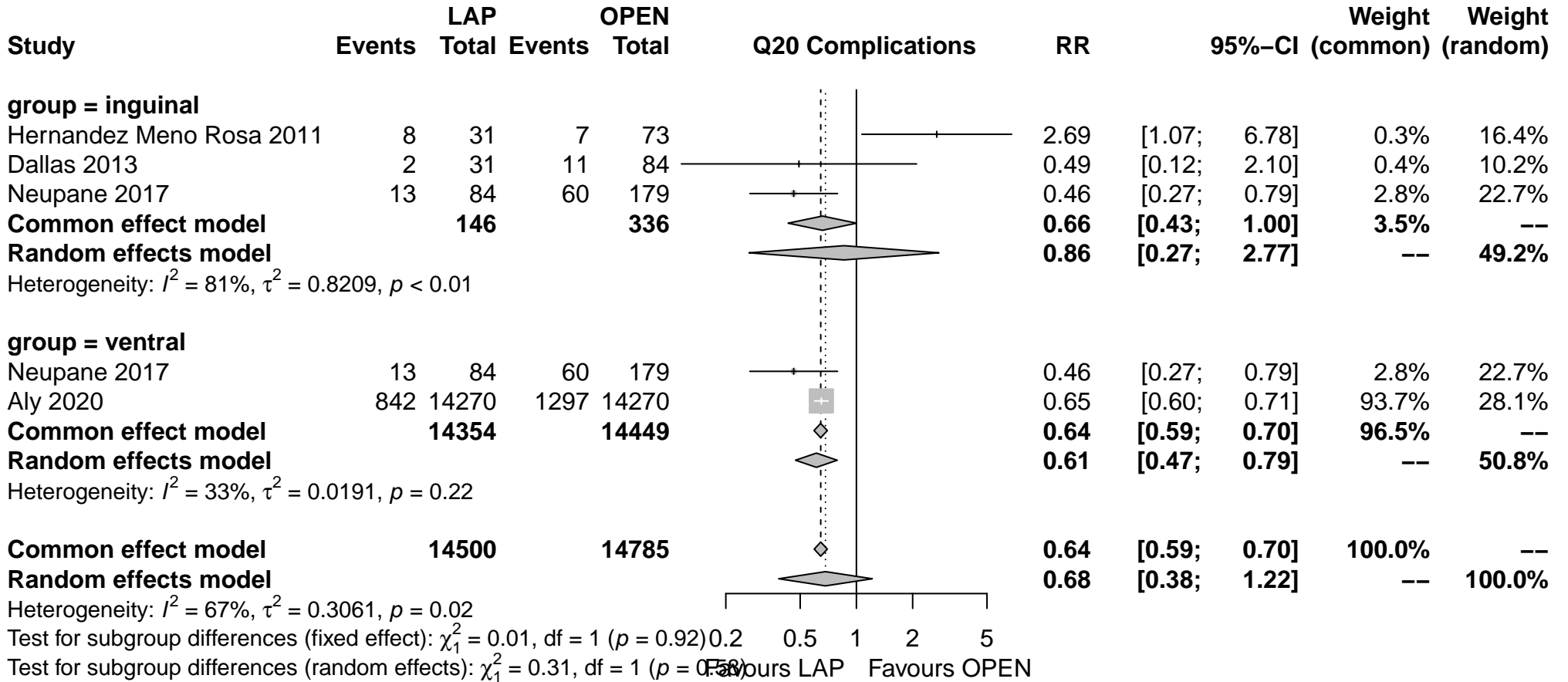
Q19 Readmission - Subgroups



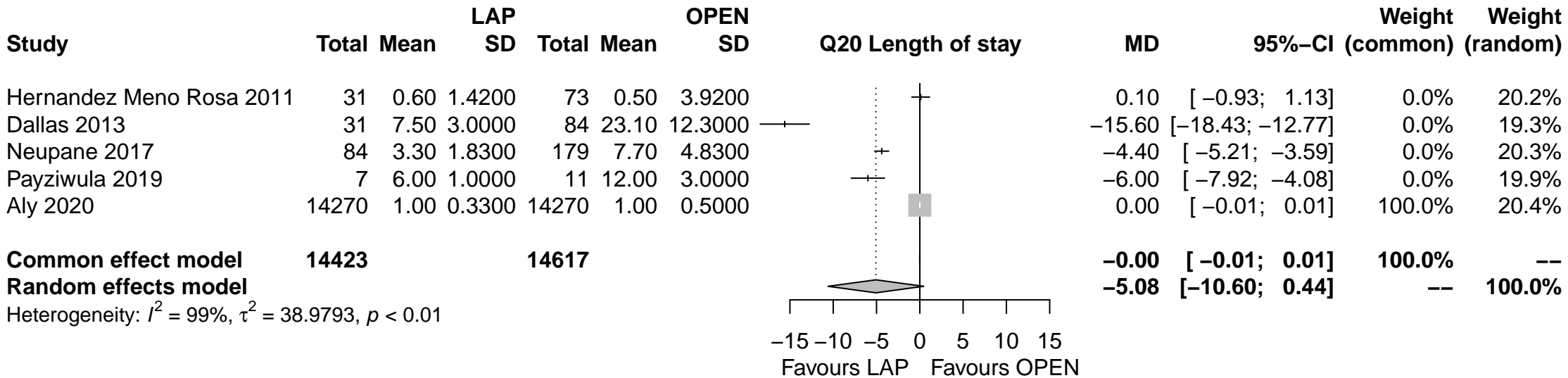
Q20 Complications



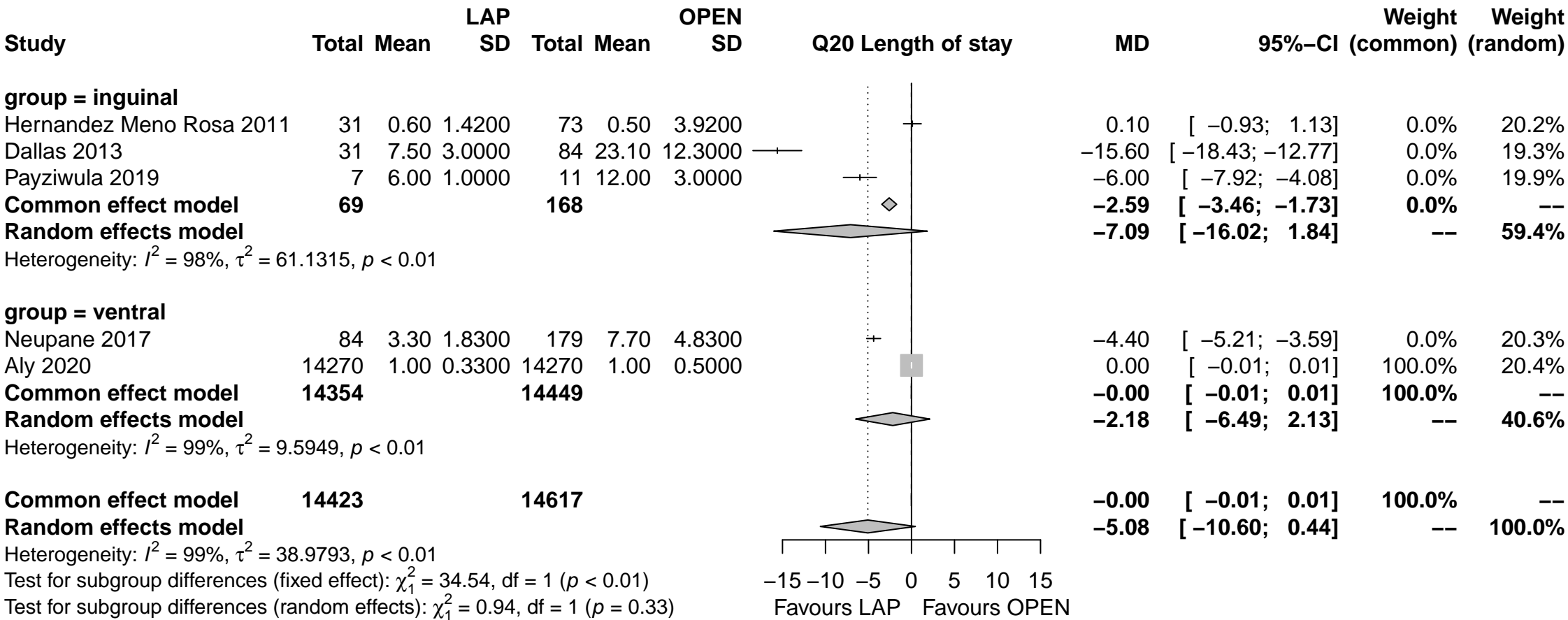
Q20 Complications - Subgroups



Q20 Length of stay

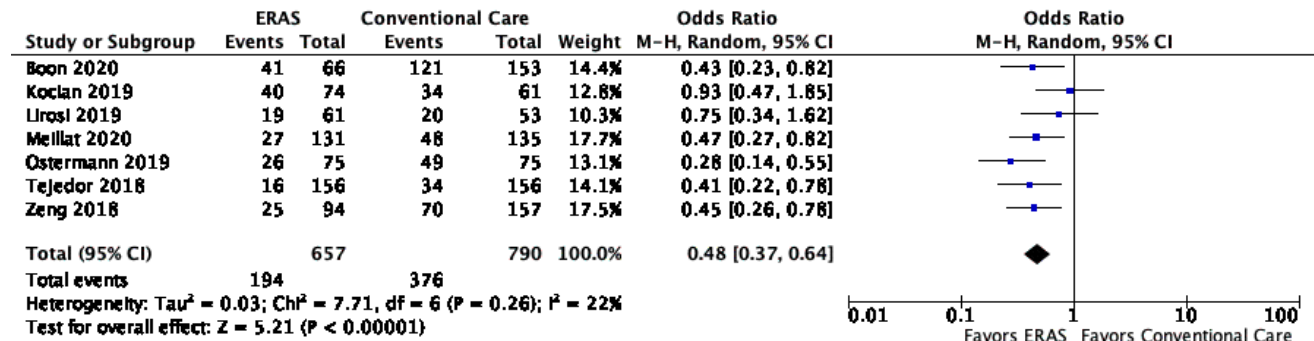


Q20 Length of stay - Subgroups

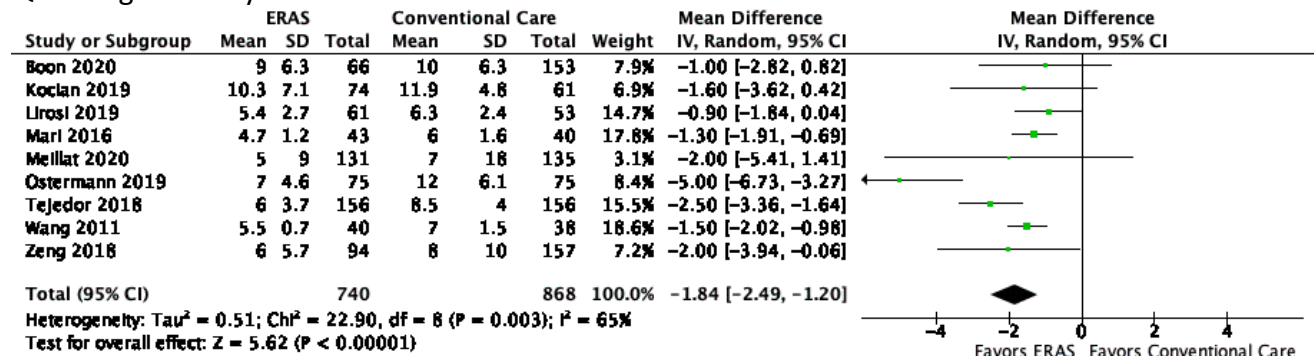


## Q21 – ERAS versus Conventional Care for Colorectal Surgery in Elderly Patients

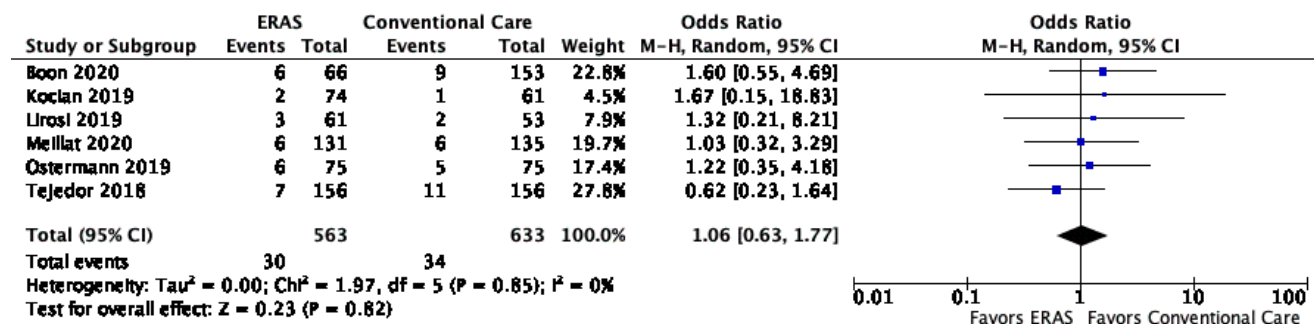
### Q21 30-Day Complications



### Q21 Length of Stay

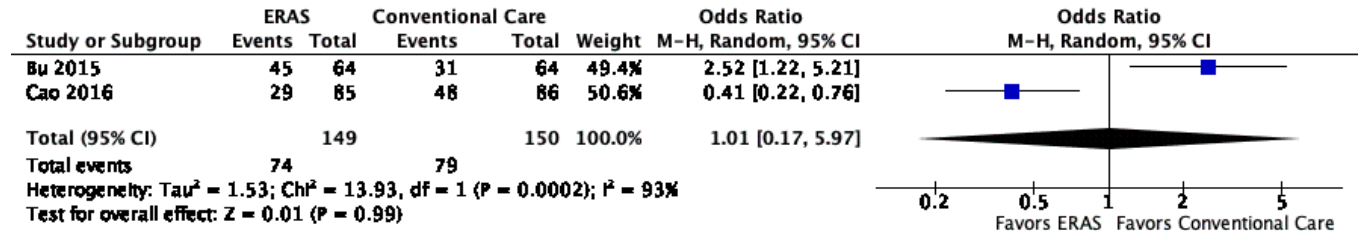


### Q21 Readmissions

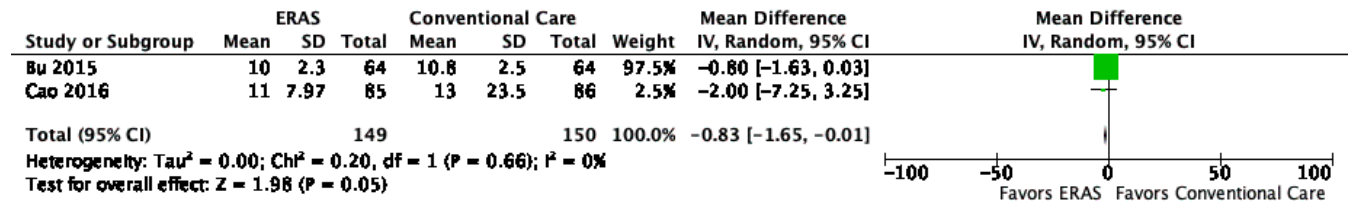


## Q22 – ERAS versus Conventional Care for Gastric Surgery in Elderly Patients

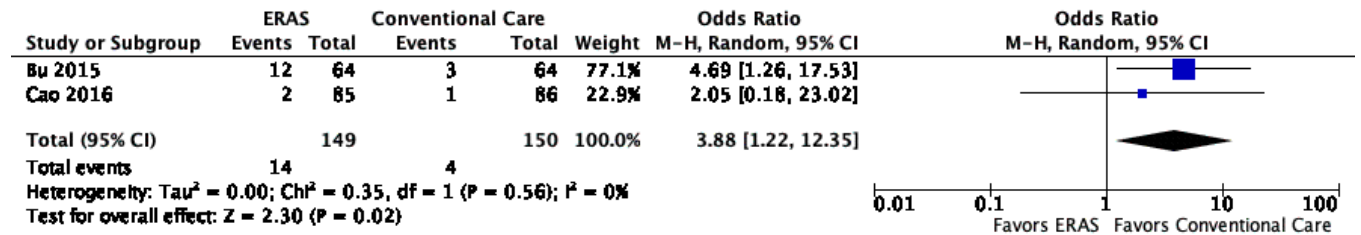
### Q22 30-day Complications



### Q22 Length of Stay

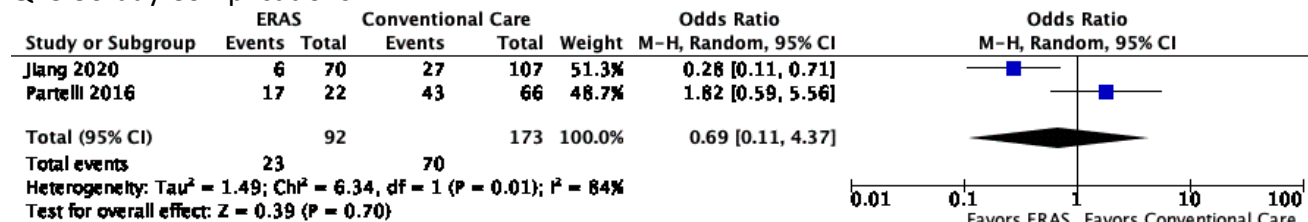


### Q22 Readmissions

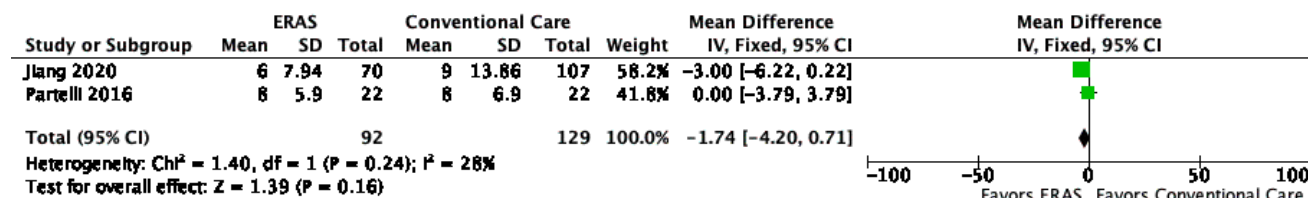


## Q23 – ERAS versus Conventional Care for HPB Surgery in Elderly Patients

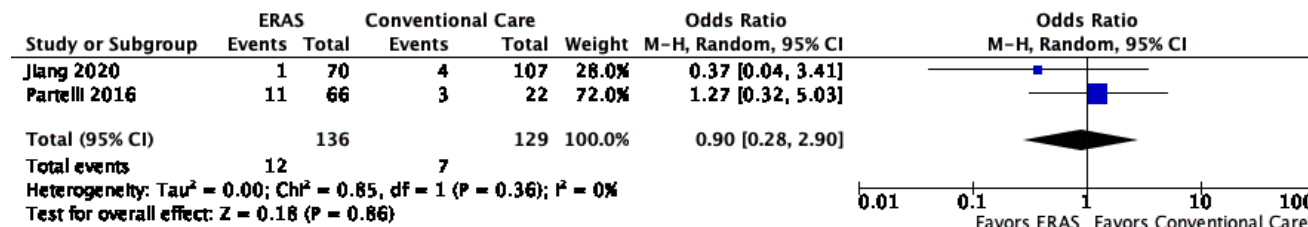
### Q23 30-day Complications



### Q23 Length of Stay



### Q23 Readmissions





**Q24 – ERAS versus Conventional Care for Foregut Surgery in Elderly Patients**

No studies found