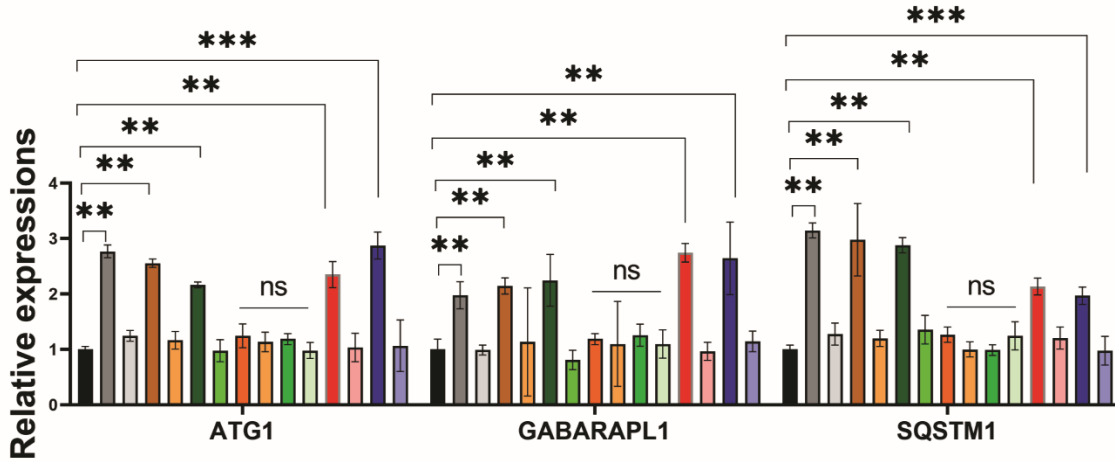
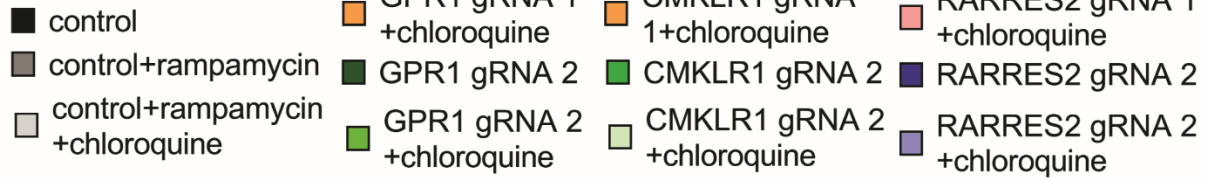
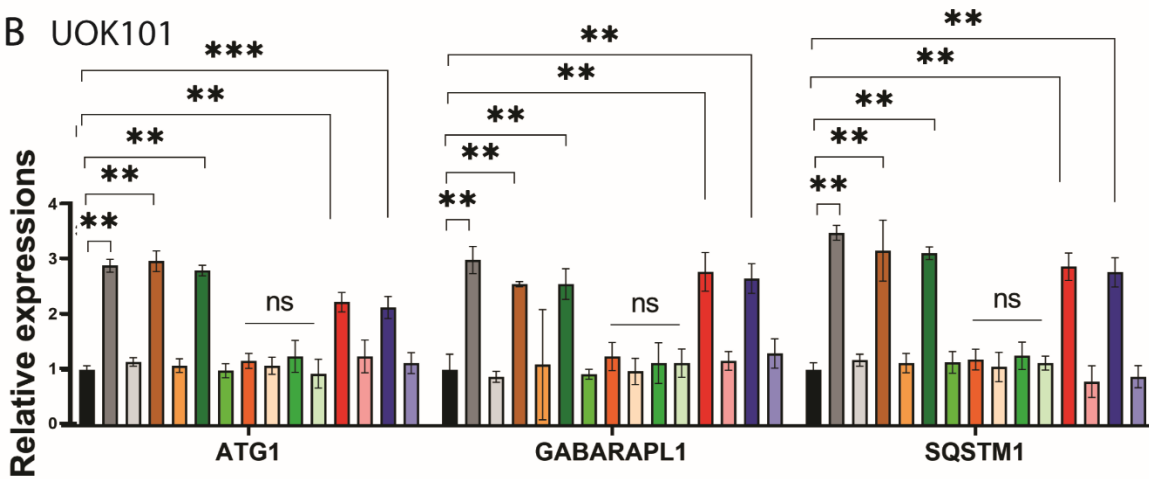


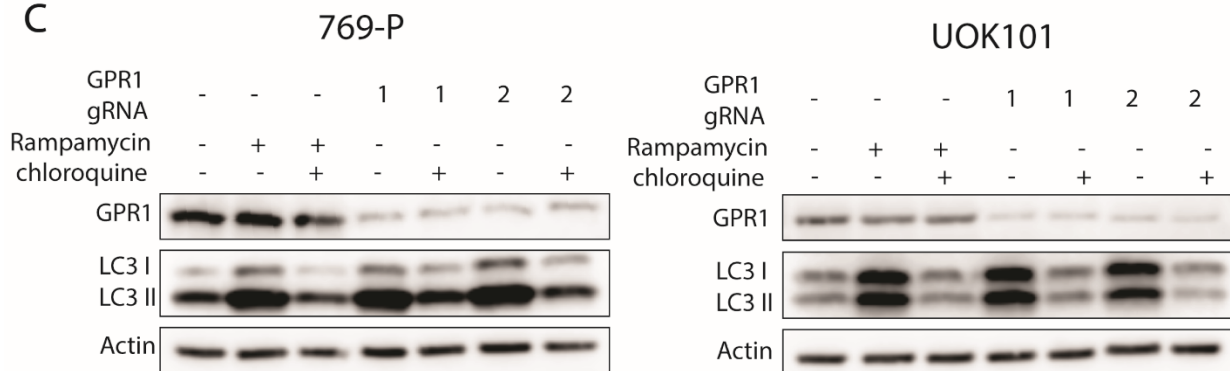
A 769-P



B UOK101



C



Supplementary Figure 5. rtPCR and western blot verification of autophagy.

A/B: qRT-PCR result of autophagy related genes after cells were treated with Ramapycin at 10 μ M or Chloroquine at 30 μ M overnight.

C: Western Probing of LC3I-II transition of CMKLR1 knockout cells while the control cell lines were exposed to Ramapycin at 10 μ M or both Ramapycin (10 μ M) and Chloroquine (30 μ M) simultaneously overnight.