

SUPPLEMENTAL MATERIAL

Table S1. Heart failure and anti-diabetic pharmacotherapy during LVAD support in the total cohort, patients without, and with type 2 diabetes mellitus. ACE: Angiotensin converting enzyme; ARB: Angiotensin receptor blocker; ARNI: Angiotensin receptor-Neprilysin inhibitor; DPP-4: Dipeptidyl peptidase-4; GLP-1; Glucagon-like peptide-1; SGLT-2: Sodium-glucose cotransporter-2; T2DM: Type 2 diabetes mellitus; VAD: Ventricular assist device

Variables	Total Cohort (N=375)	Patients without T2DM (n=199)	Patients with T2DM (n=176)	p-value
<u>3-months Post-VAD Heart Failure Medications</u>				
Beta blocker, n (%)	199 (56.1%)	104 (56.2%)	95 (55.9%)	0.95
ARNI/ARB/ACE inhibitor, n (%)	164 (43.7%)	92 (46.2%)	72 (40.9%)	0.30
Aldosterone antagonist, n (%)	164 (46.2%)	97 (52.4%)	67 (39.4%)	0.014
Diuretic, n (%)	271 (76.3%)	132 (71.4%)	139 (81.8%)	0.021
<u>3-months Post-VAD Type 2 Diabetes Mellitus Medications</u>				
Insulin, n (%)	-	-	72 (42.6%)	-
Metformin, n (%)	-	-	33 (28.2%)	-
DPP-4 inhibitors, n (%)	-	-	14 (12.0%)	-
GLP-1 agonists, n (%)	-	-	10 (5.7%)	-
SGLT-2 inhibitors, n (%)	-	-	1 (0.6%)	-
Alpha-glucosidase inhibitors, n (%)	-	-	0 (0.0%)	-

Table S2. Univariable and multivariable analysis of the association between pre-LVAD implantation HbA1c and 3-year all-cause mortality. CI: Confidence interval; HbA1c: Glycated hemoglobin; HF: Heart failure; LVEDD: Left ventricular end-diastolic diameter

Variable	Hazard ratio [95% CI]	p-value
<i>Univariable analysis</i>		
HbA1c	1.12 [0.95 - 1.31]	0.177
<i>Multivariable analysis</i>		
Age	1.02 [1.00 - 1.04]	0.029
Male sex	0.81 [0.44 - 1.50]	0.504
Duration of HF symptoms	1.00 [0.99 - 1.00]	0.905
LVEDD	0.74 [0.57 - 0.96]	0.022
HbA1c	1.13 [0.96 - 1.34]	0.152

Figure S1. Kaplan-Meier survival curve for the study cohort over 3 years of follow-up.

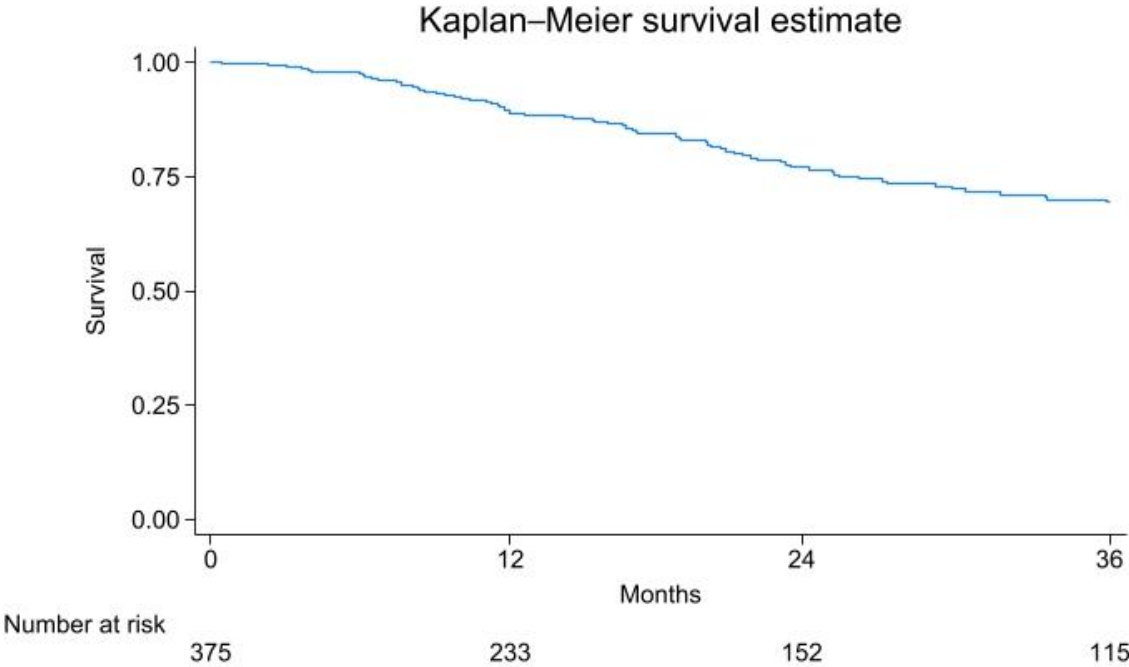


Figure S2. Association of pre-LVAD implantation HbA1c with LVAD-related adverse events. The x-axis represents the adjusted hazard ratios and their corresponding 95% confidence intervals. *GI: Gastrointestinal; HbA1c: Glycated hemoglobin; TIA: Transient ischemic attack; VAD: Ventricular assist device*

