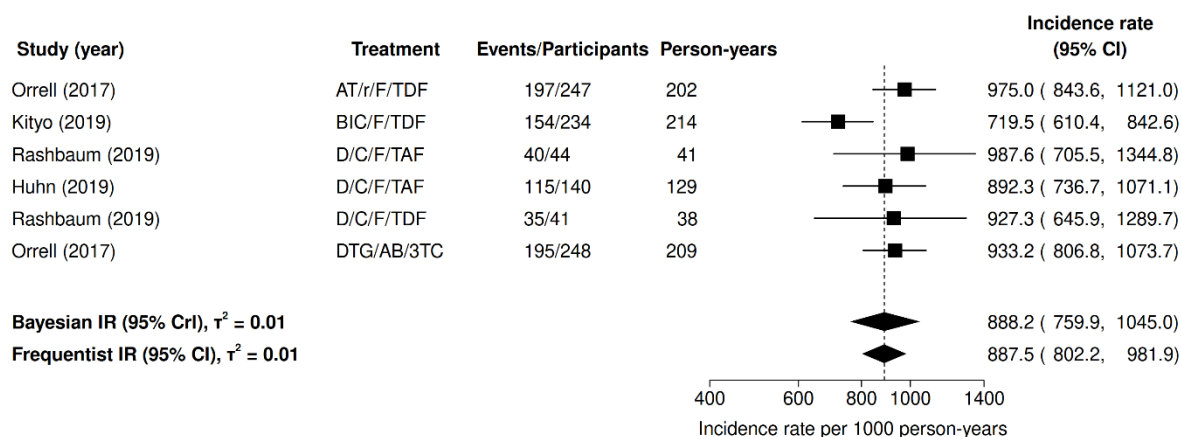


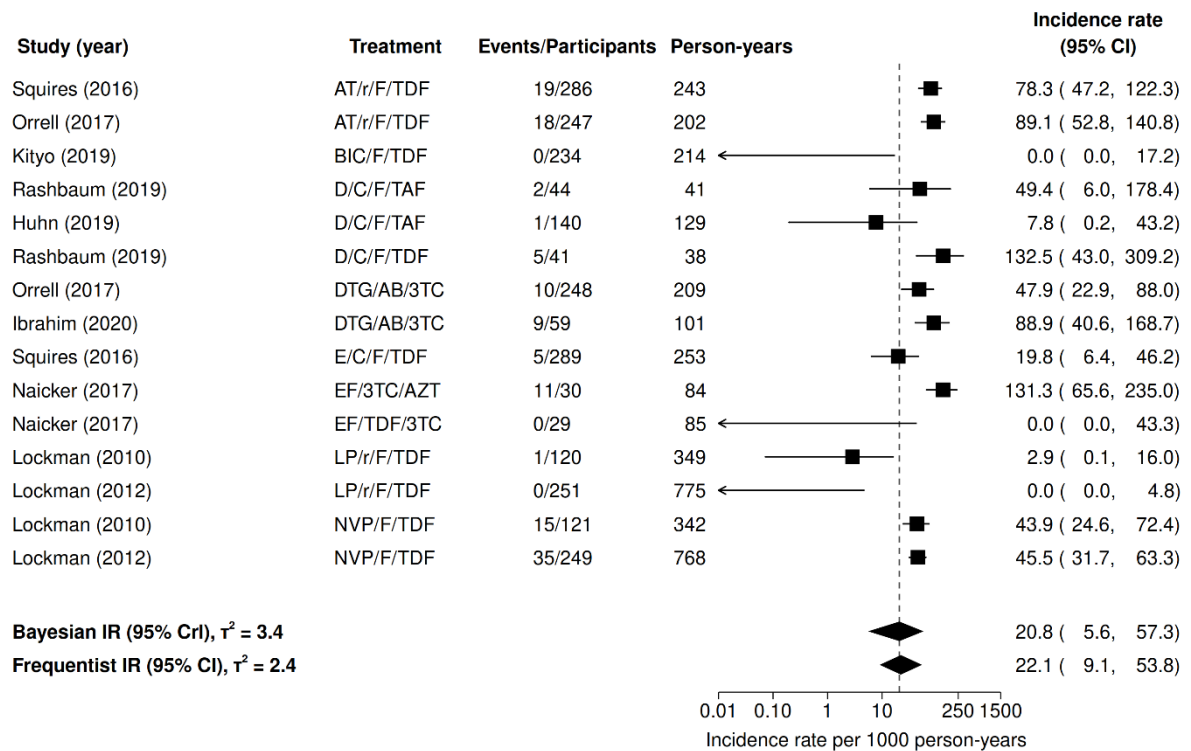
Forest plots with incidence rate analysis

Figure S3 – Analysis of the incidence rates of any clinical and/or laboratory adverse event



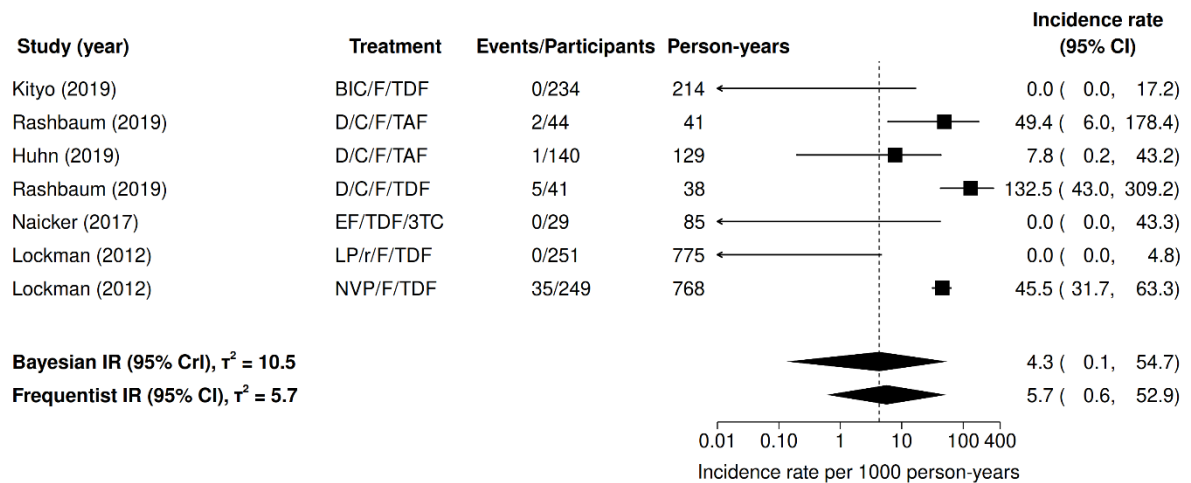
Forest plot of the incidence rate of any clinical and/or laboratory adverse event. Estimates are sorted by treatment type. Analyses are based on a random-effects model. IR denotes the incidence rate per 1000 person-years. 95% CrI denotes a 95% credible interval. 95% CI denotes a 95% confidence interval. Arrows indicate that the lower bound of the 95% CIs exceeds the graph's limits. For individual studies, the uncertainty around point estimates was represented by exact Poisson 95% confidence intervals. τ^2 denotes the between-study variance (on a log scale). The 95% prediction interval was 611.20 to 1300 events per 1000 person-years, suggesting high between-group heterogeneity. 3TC=lamivudine; AB=abacavir; AT=atazanavir; BIC=bictegravir; C=cobicistat; D=darunavir; F=emtricitabine; r=ritonavir; TAF=tenofovir alafenamide; TDF=tenofovir disoproxil fumarate.

Figure S4 – Analysis of the incidence rates of discontinuation or dropouts/withdrawals due to adverse events



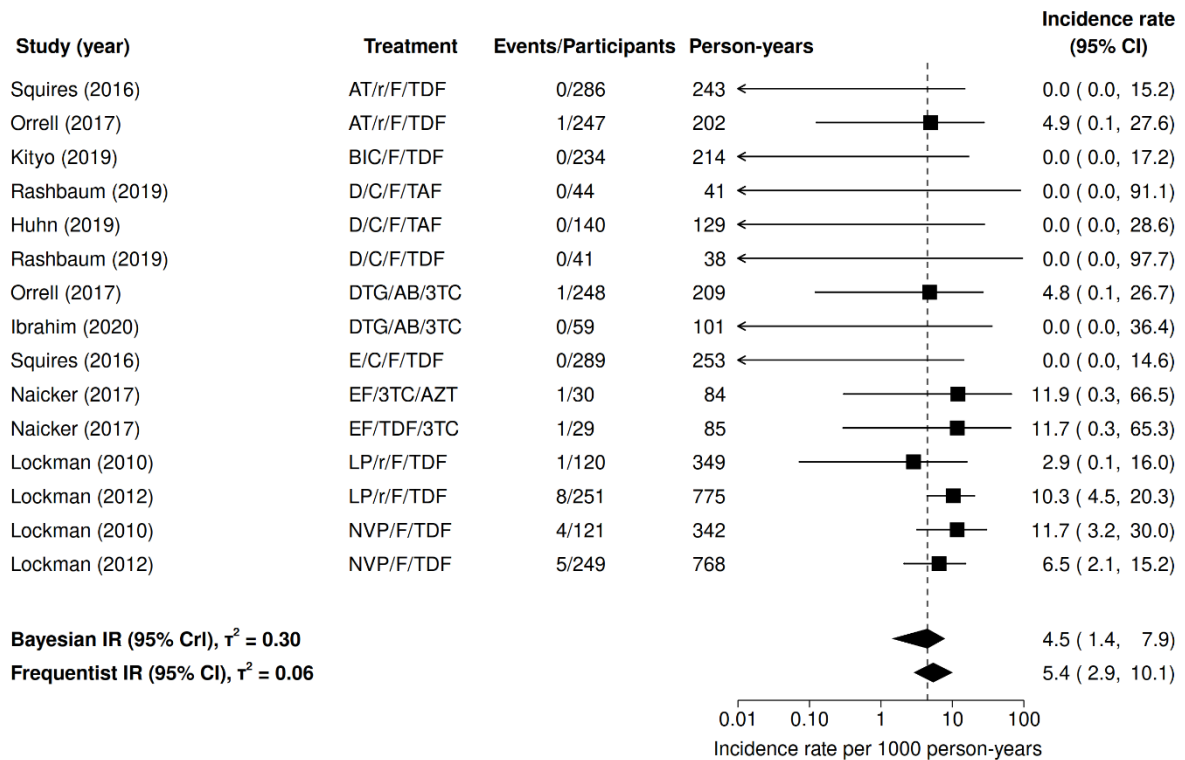
Forest plot of the incidence rate of discontinuation or dropouts/withdrawals due to adverse events. Estimates are sorted by treatment type. Analyses are based on a random-effects model. IR denotes the incidence rate per 1000 person-years. 95% CrI denotes a 95% credible interval. 95% CI denotes a 95% confidence interval. Arrows indicate that the lower bound of the 95% CIs exceeds the graph's limits. For individual studies, the uncertainty around point estimates was represented by exact Poisson 95% confidence intervals. τ^2 denotes the between-study variance (on a log scale). The 95% prediction interval was 0.25 to 1270 events per 1000 person-years, suggesting high between-group heterogeneity. 3TC=lamivudine; AB=abacavir; AT=atazanavir; AZT=zidovudine; BIC=bictegravir; C=cobicistat; D=darunavir; DTG=dolutegravir; E=elvitegravir; EF=efavirenz; F=emtricitabine; LP=lopinavir; NVP=nevirapine; r=ritonavir; TAF=tenofovir alafenamide; TDF=tenofovir disoproxil fumarate.

Figure S5 – Analysis of the incidence rates of discontinuation or dropouts/withdrawals due to adverse events related to ART



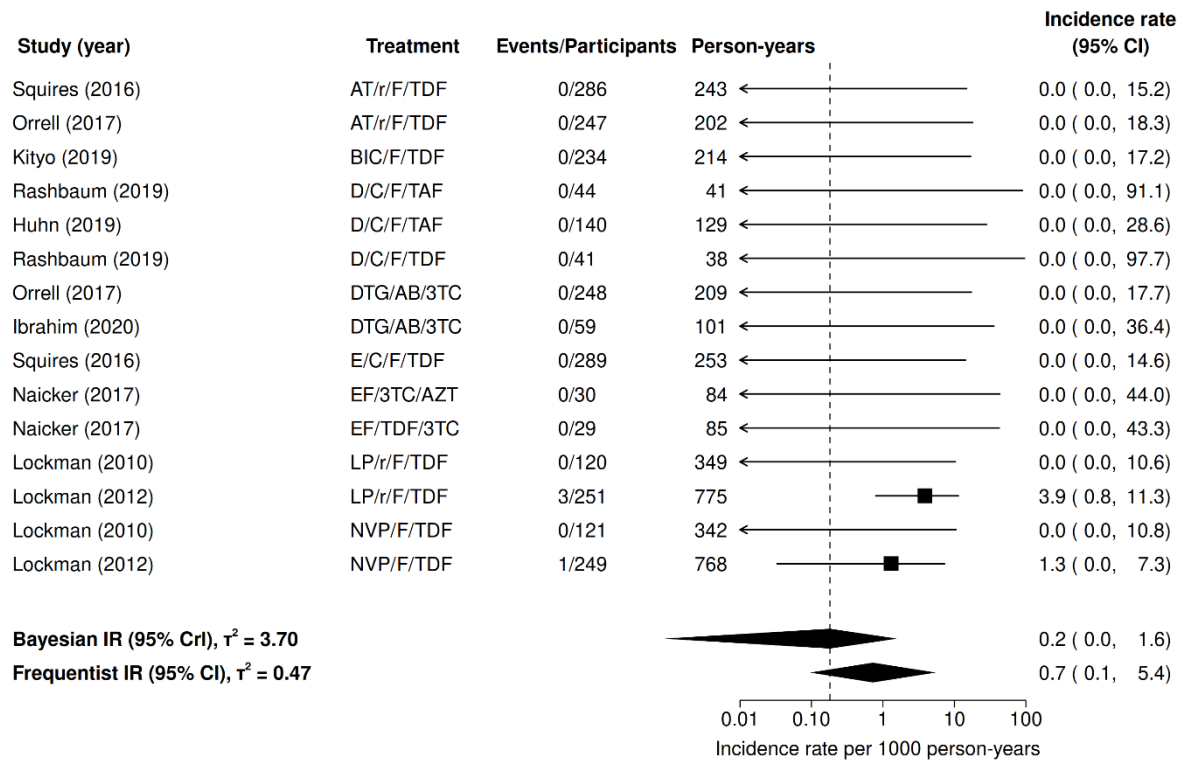
Forest plot of the incidence rate of discontinuation or dropouts/withdrawals due to adverse events related to ART. Estimates are sorted by treatment type. Analyses are based on a random-effects model. IR denotes the incidence rate per 1000 person-years. 95% CrI denotes a 95% credible interval. 95% CI denotes a 95% confidence interval. Arrows indicate that the lower bound of the 95% CIs exceeds the graph's limits. For individual studies, the uncertainty around point estimates was represented by exact Poisson 95% confidence intervals. τ^2 denotes the between-study variance (on a log scale). The 95% prediction interval was 0 to 5103.95 events per 1000 person-years, suggesting high between-group heterogeneity. 3TC=lamivudine; BIC=bictegravir; C=cobicistat; D=darunavir; EF=efavirenz; F=emtricitabine; LP=lopinavir; NVP=nevirapine; r=ritonavir; TAF=tenofovir alafenamide; TDF=tenofovir disoproxil fumarate.

Figure S6 – Analyzes of incidence rates of death from all causes



Forest plot of the incidence rate of death from all causes. Estimates are sorted by treatment type. Analyses are based on a random-effects model. IR denotes the incidence rate per 1000 person-years. 95% CrI denotes a 95% credible interval. 95% CI denotes a 95% confidence interval. Arrows indicate that the lower bound of the 95% CIs exceeds the graph's limits. For individual studies, the uncertainty around point estimates was represented by exact Poisson 95% confidence intervals. τ^2 denotes the between-study variance (on a log scale). The 95% prediction interval was 0.45 to 20.09 events per 1000 person-years. 3TC=lamivudine; AB=abacavir; AT=atazanavir; AZT=zidovudine; BIC=bictegravir; C=cobicistat; D=darunavir; DTG=dolutegravir; E=elvitegravir; EF=efavirenz; F=emtricitabine; LP=lopinavir; NVP=nevirapine; r=ritonavir; TAF=tenofovir alafenamide; TDF=tenofovir disoproxil fumarate.

Figure S7 – Analysis of incidence rates of death from adverse events related to ART



Forest plot of the incidence rate of death from adverse events related to ART. Estimates are sorted by treatment type. Analyses are based on a random-effects model. IR denotes the incidence rate per 1000 person-years. 95% CrI denotes a 95% credible interval. 95% CI denotes a 95% confidence interval. Arrows indicate that the lower bound of the 95% CIs exceeds the graph's limits. For individual studies, the uncertainty around point estimates was represented by exact Poisson 95% confidence intervals. τ^2 denotes the between-study variance (on a log scale). The 95% prediction interval was 0 to 12.05 events per 1000 person-years. 3TC=lamivudine; AB=abacavir; AT=atazanavir; AZT=zidovudine; BIC=bictegravir; C=cobicistat; D=darunavir; DTG=dolutegravir; E=elvitegravir; EF=efavirenz; F=emtricitabine; LP=lopinavir; NVP=nevirapine; r=ritonavir; TAF=tenofovir alafenamide; TDF=tenofovir disoproxil fumarate.