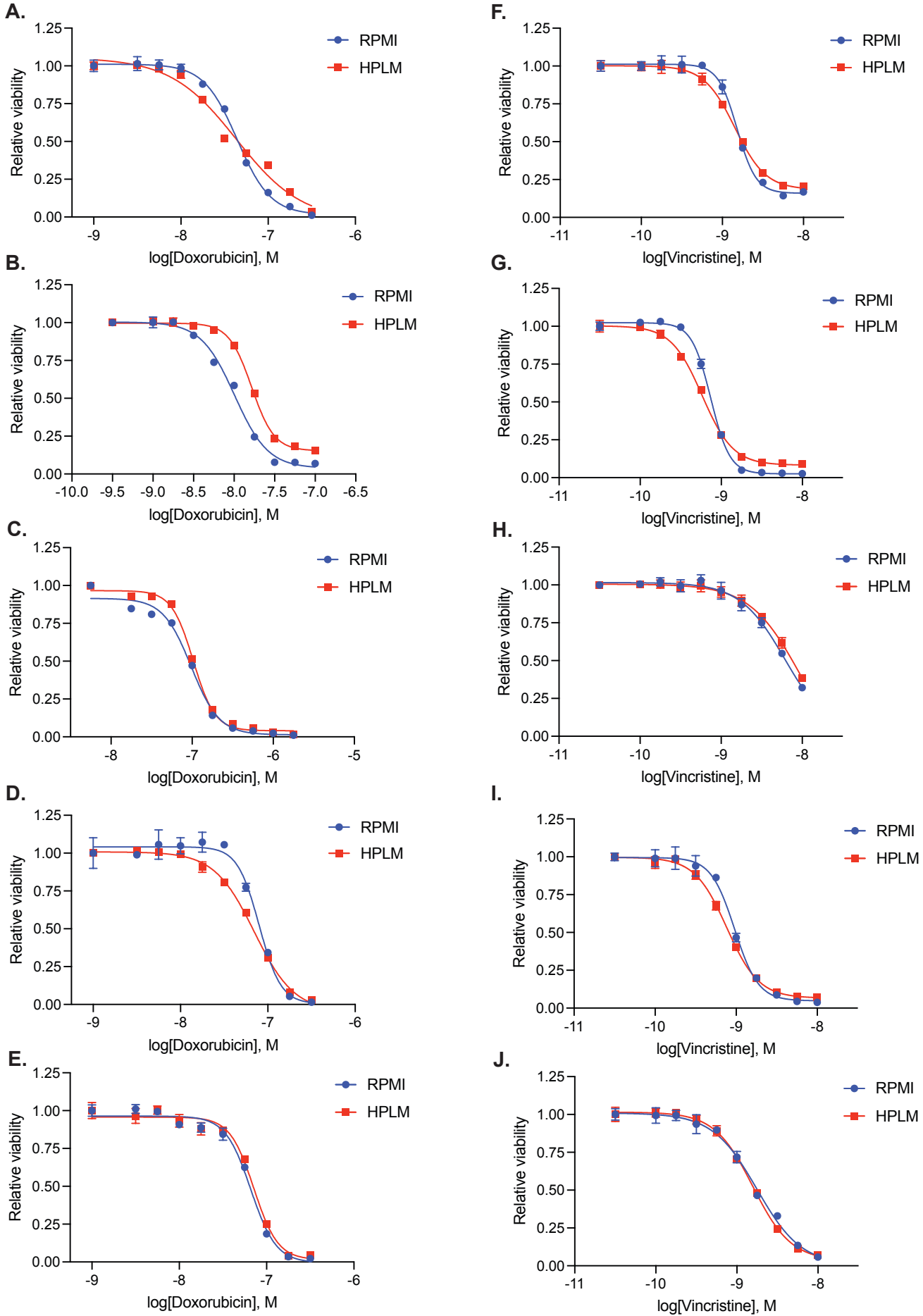
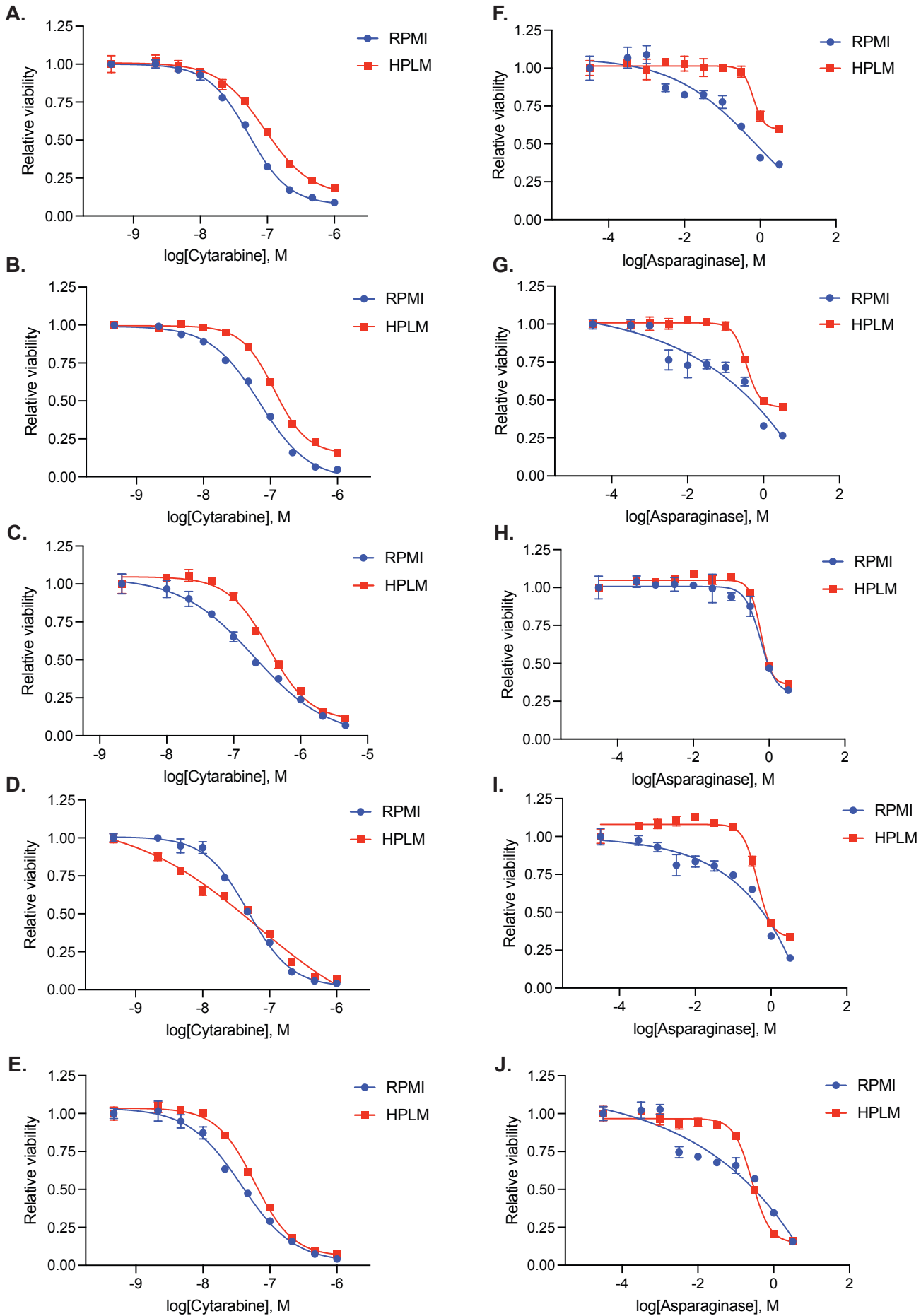


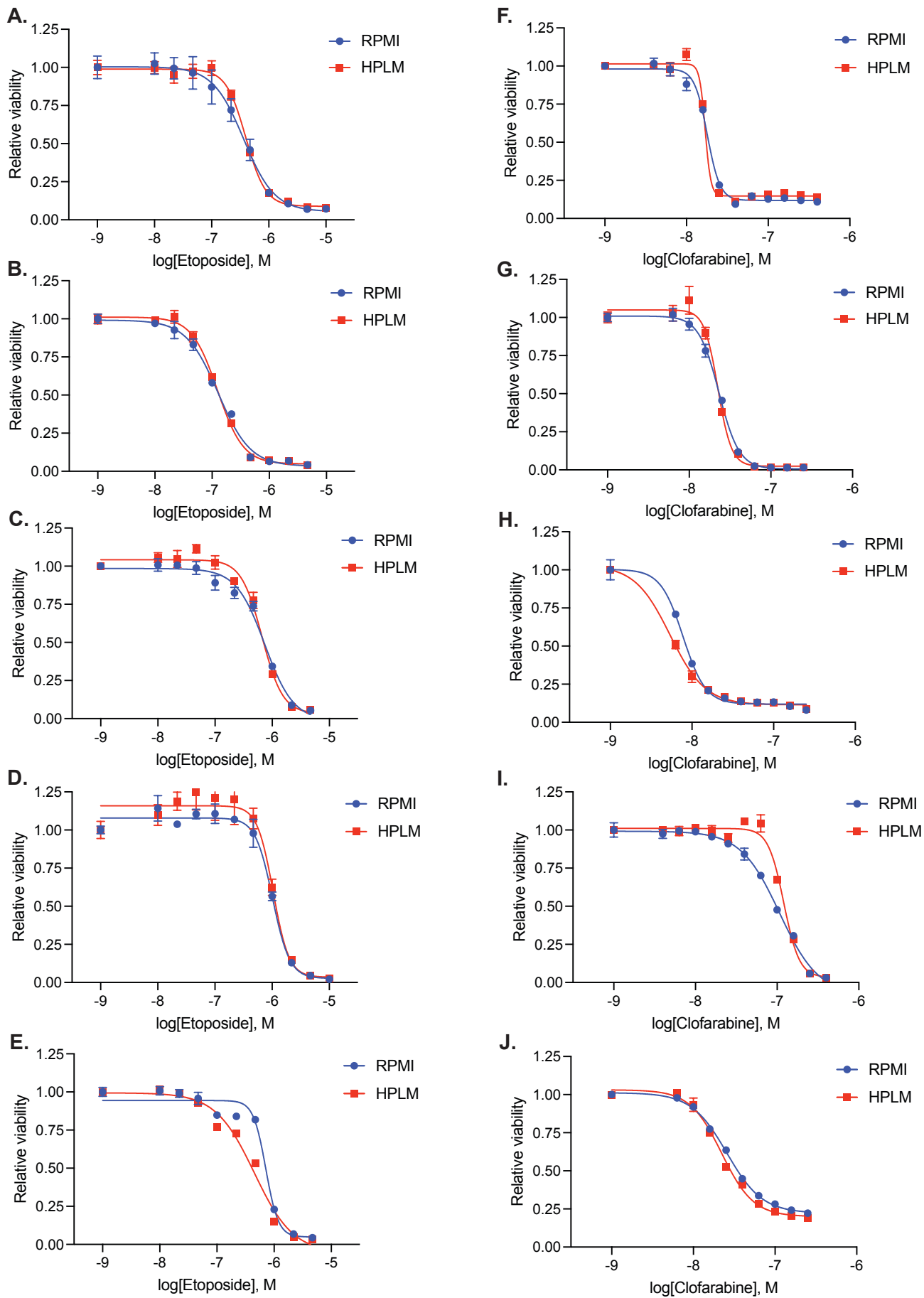
Supplemental Figure 1



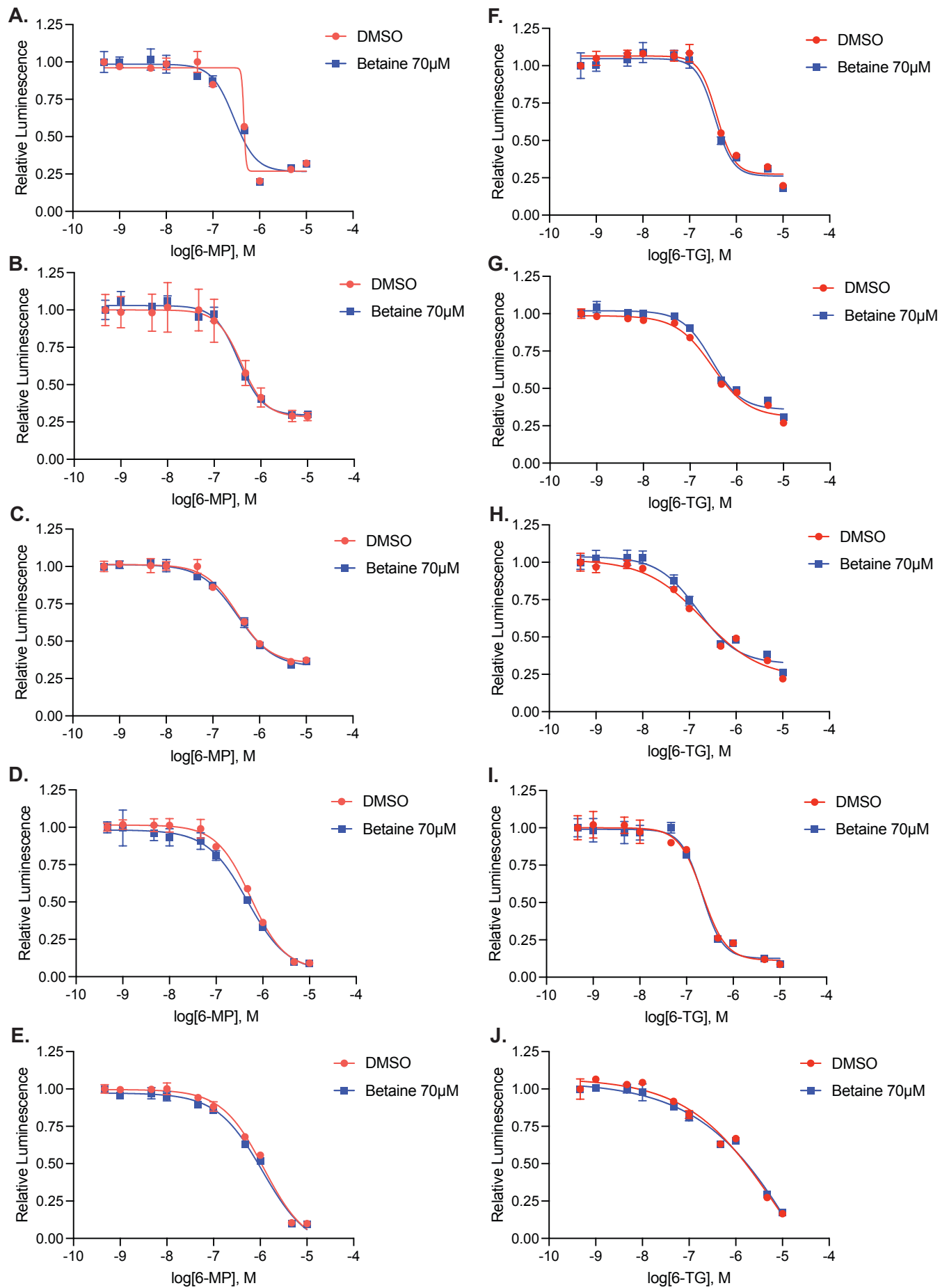
Supplemental Figure 2



Supplemental Figure 3



Supplemental Figure 4



Supplemental Information

Supplemental Figure Legends:

Supplemental Figure 1: Leukemia cell chemotherapy sensitivity in regular compared to human plasma-like media. Doxorubicin (A-E) and vincristine (F-J) dose-response curves for leukemia cells (NALM-6, A, F; REH, B, G; SEM, C, H; Jurkat, D, I; CEM, E, J) in regular or human plasma-like media. Leukemia cell viability was assessed after 48 hours of drug treatment using the CellTiter-Glo Luminescent Cell Viability Assay. Error bars represent the mean \pm SD of three technical replicates.

Supplemental Figure 2: Leukemia cell chemotherapy sensitivity in regular compared to human plasma-like media. Cytarabine (A-E) and vincristine (F-J) dose-response curves for leukemia cells (NALM-6, A, F; REH, B, G; SEM, C, H; Jurkat, D, I; CEM, E, J) in regular or human plasma-like media. Leukemia cell viability was assessed after 48 hours of drug treatment using the CellTiter-Glo Luminescent Cell Viability Assay. Error bars represent the mean \pm SD of three technical replicates.

Supplemental Figure 3: Leukemia cell chemotherapy sensitivity in regular compared to human plasma-like media. Etoposide (A-E) and clofarabine (F-J) dose-response curves for leukemia cells (NALM-6, A, F; REH, B, G; SEM, C, H; Jurkat, D, I; CEM, E, J) in regular or human plasma-like media. Leukemia cell viability was assessed after 48 hours of drug treatment using the CellTiter-Glo Luminescent Cell Viability Assay. Error bars represent the mean \pm SD of three technical replicates.

Supplemental Figure 4: Betaine supplementation of regular media dose not impact leukemia cell sensitivity to thiopurines. 6-MP (A-E) and 6-TG (F-J) dose-response curves for leukemia cells (NALM-6, A, F; REH, B, G; SEM, C, H; Jurkat, D, I; CEM, E, J) in regular media supplemented with betaine 70 μ M or DMSO control. Leukemia cell viability was assessed after 48 hours of drug treatment using the CellTiter-Glo Luminescent Cell Viability Assay. Error bars represent the mean \pm SD of three technical replicates.