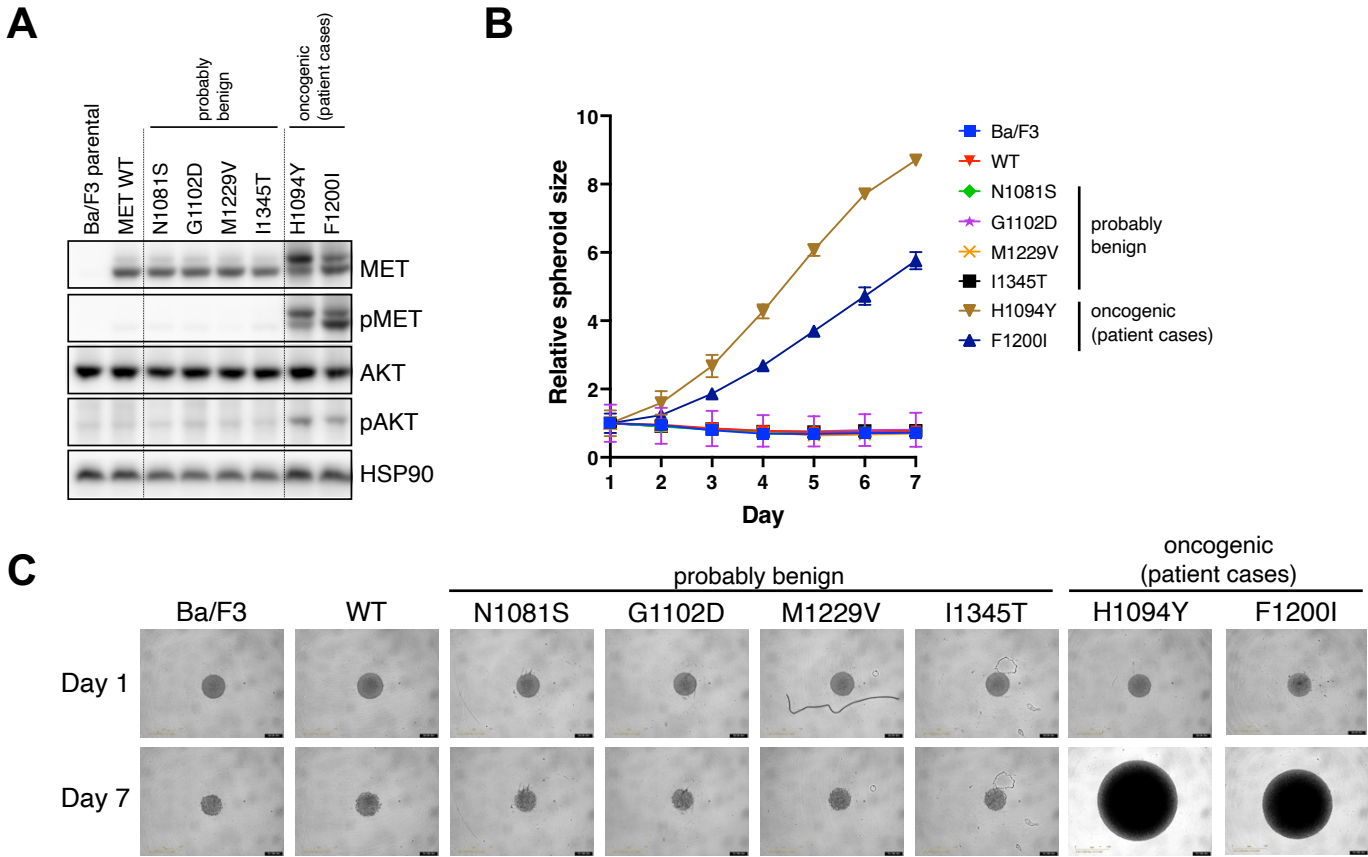


Supplementary Figure 11



Supplementary Figure 11. In vitro analysis of “probably benign” *MET* TKD mutations in Ba/F3 cells. (A) Phosphorylation of MET was analyzed in Ba/F3 cells stably transduced with *MET* TKD mutants. *MET* H1094Y and F1200I were included as positive controls for oncogenic mutations (OncoKB, also detected in the two patient cases) and *MET* WT was included as negative control. (B) IL3-independent cell proliferation of Ba/F3 cells expressing “probably benign” *MET* TKD mutants, shown by relative spheroid size measured daily from day 1 to day 7. (C) Spheroid images of Ba/F3 cells expressing *MET* TKD mutants taken on day 1 and day 7.