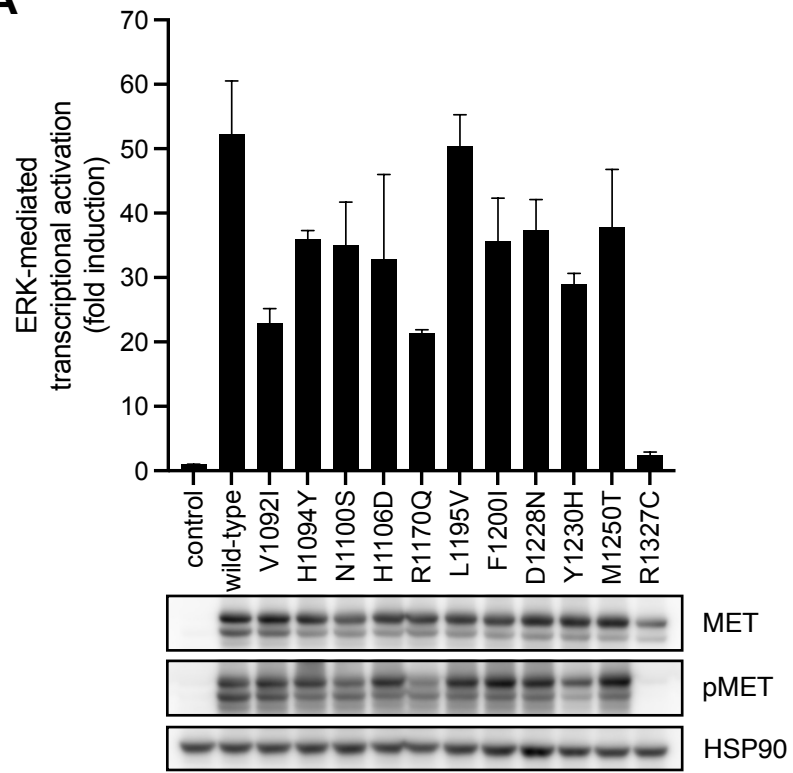
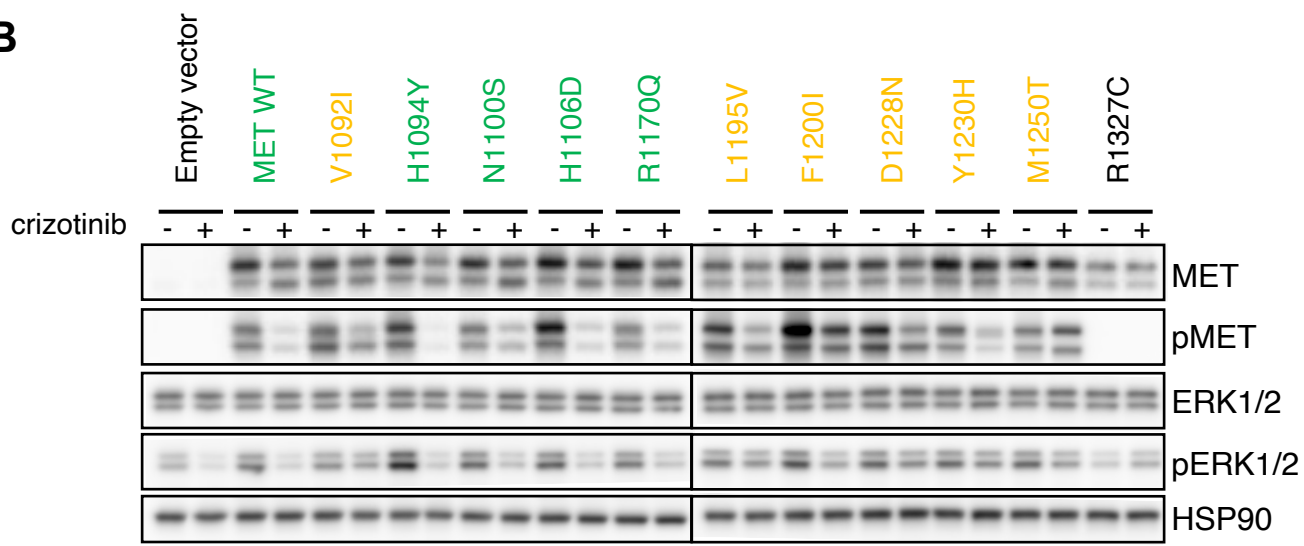


Supplementary Figure 12

A



B



Supplementary Figure 12. Sensitivity pattern of *MET* TKD mutations in 293T cells.

(A) ERK-mediated transcriptional activation assessed by luciferase assay in 293T cells co-transfected with *MET* WT or TKD mutant constructs, an ERK activation reporter vector (pGL4.33), and a control co-reporter vector (pRL-TK). The lower panel shows western blot analysis of transfected samples. **(B)** Western blot analysis of *MET* and ERK1/2 phosphorylation in response to 1 μ M crizotinib. *MET* TKD mutants showing sensitivity and resistance to crizotinib are colored green and orange, respectively.