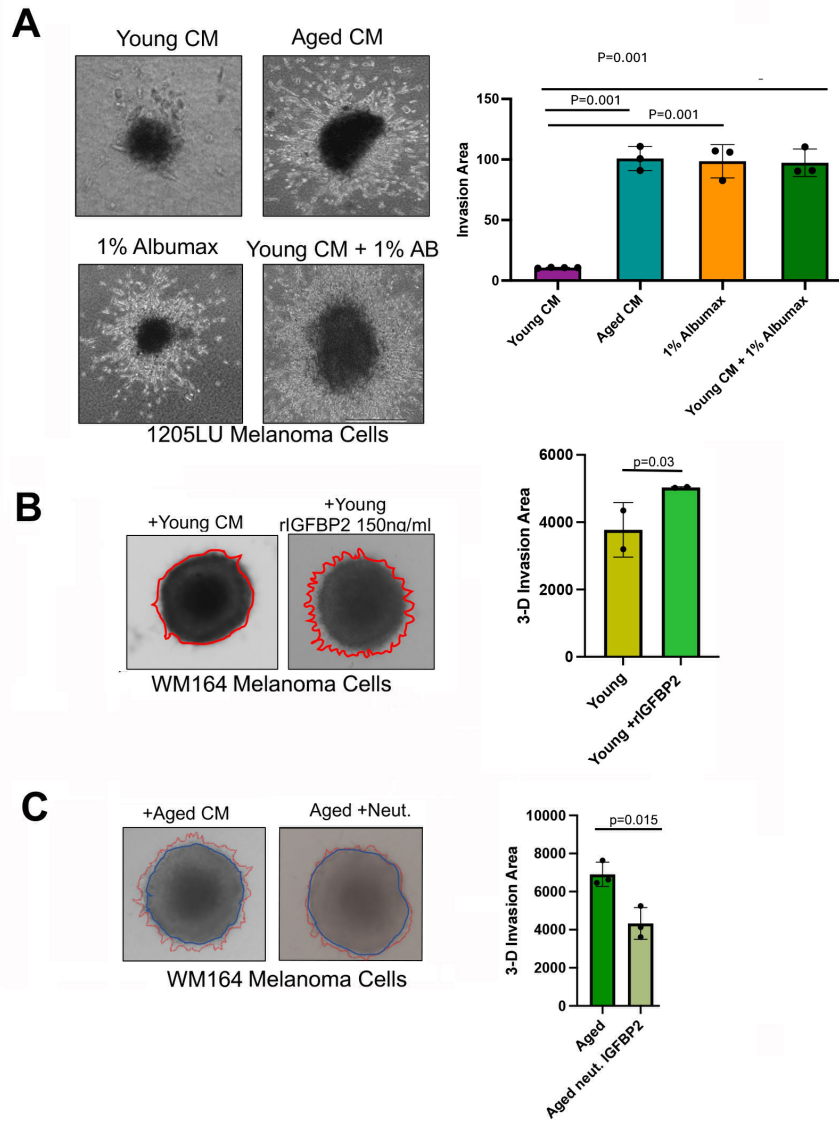


## Supplemental Figure 2



**Supplemental Figure 2. IGFBP2 treatment promotes invasion.** A) Melanoma cells (1205Lu) grown in 3D spheroids cultured with young fibroblast conditioned media in the presence or absence of 1% Albumax, aged fibroblast conditioned media, or regular culture media with 1% Albumax for 48 hrs. B) Melanoma cells (WM164) grown in 3D spheroid assay cultured with young fibroblast conditioned media in the presence or absence of 150ng/mL recombinant IGFBP2. C) Melanoma cells (WM164) grown in 3D spheroid assay cultured with aged fibroblast conditioned media in the presence of either an IgG control or a neutralizing IGFBP2 antibody (5 $\mu$ g/mL) for 48 hrs. GraphPad Prism 8 was used for plotting graphs and statistical analysis. Significance was designated as follows: \* $P < 0.05$ ; \*\* $P < 0.01$ ; \*\*\* $P < 0.001$ ; \*\*\*\* $P < 0.0001$ , unpaired t-test was performed.