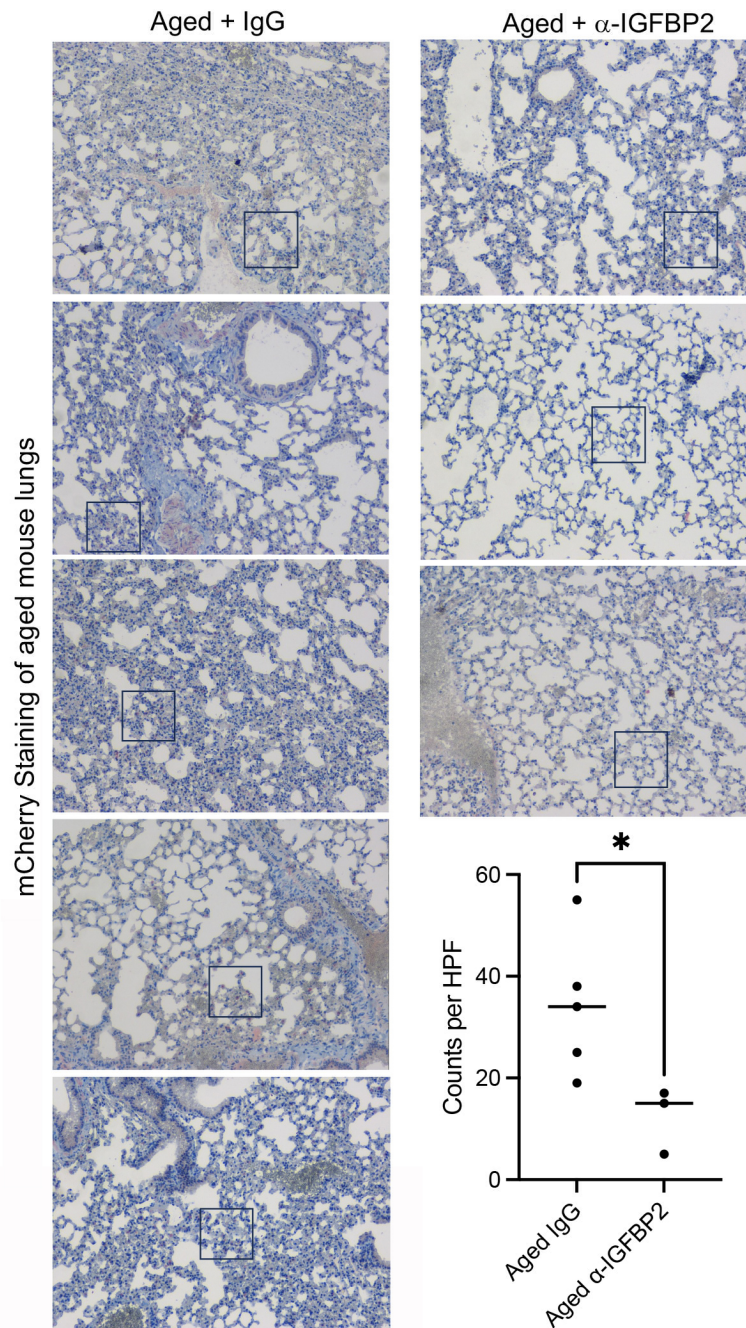


Supplemental Figure 3



Supplemental Figure 3. Inhibiting IGFBP2 reduces metastasis. Analysis of mCherry positive cells in lungs of tumor bearing aged mice treated with a neutralizing IGFBP2 antibody or IgG control, larger fields of view of images from Figure 4 (boxes indicate areas imaged for Figure 4). * Indicates $p < 0.05$ student t-test was used.