

# **BRCA1 secondary splice-site mutations drive exon-skipping and PARP inhibitor resistance**

Nesic et al.,

**Uncropped blots and gels**

Figure 1F- BRCA1

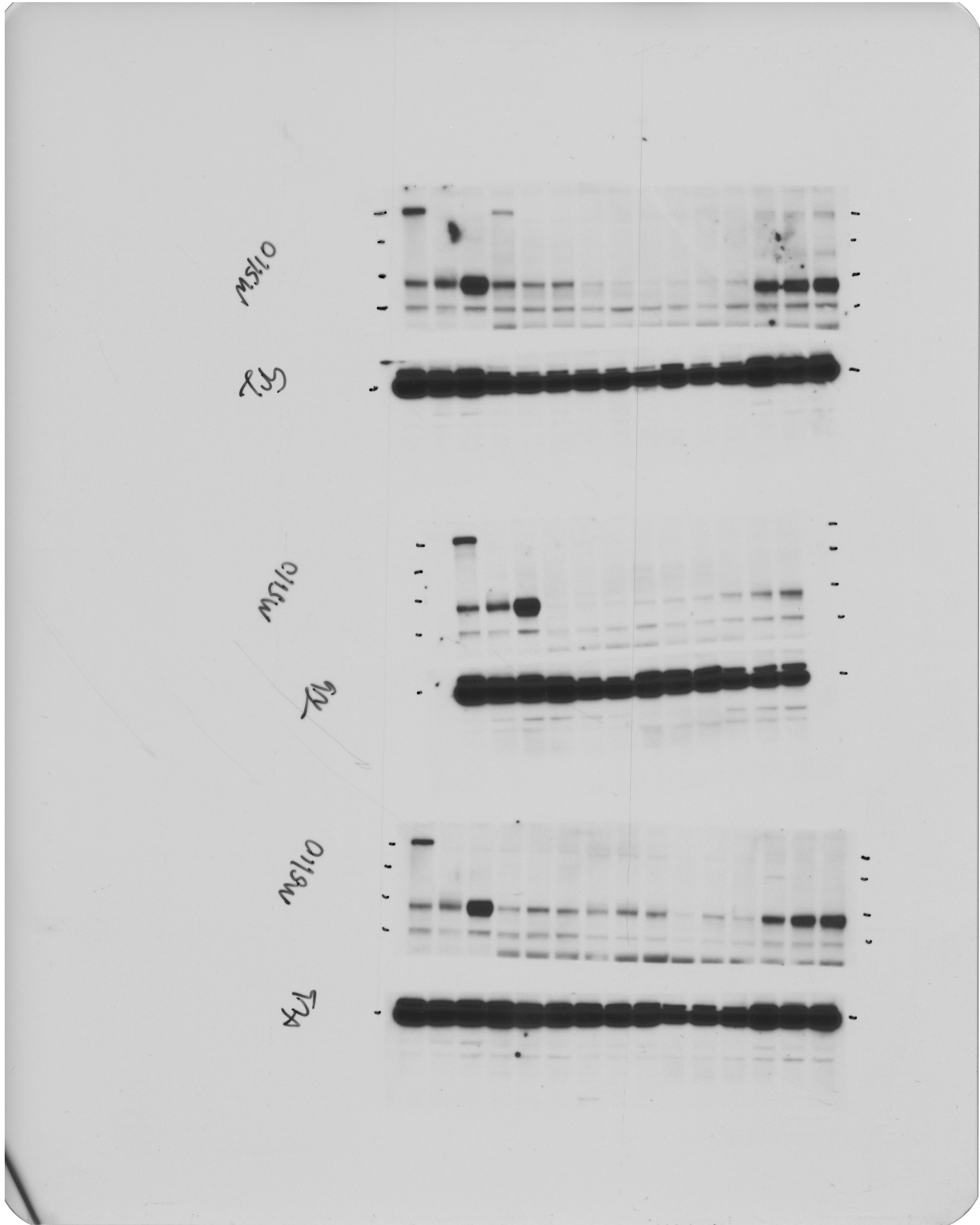


Figure 1F- Tubulin

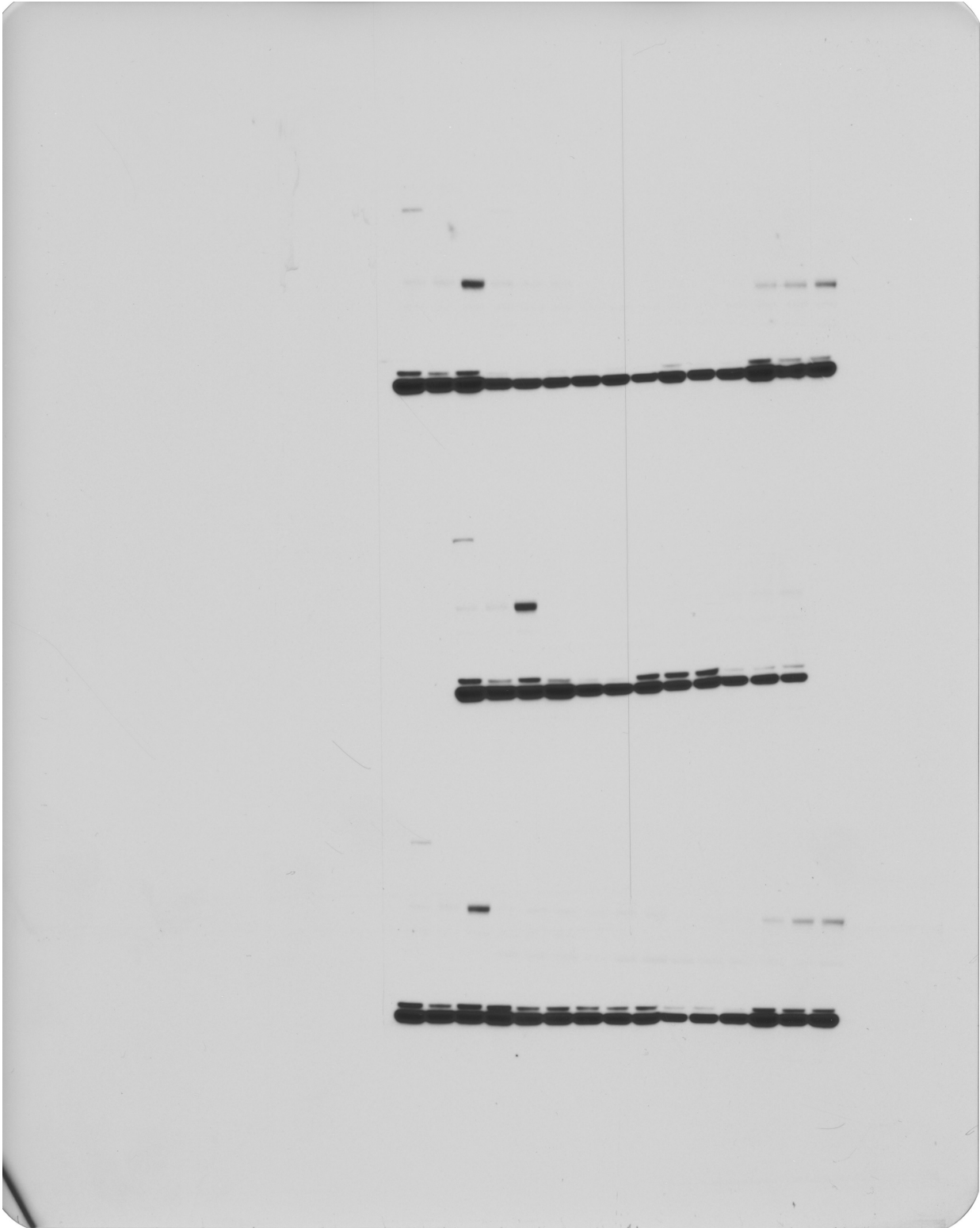
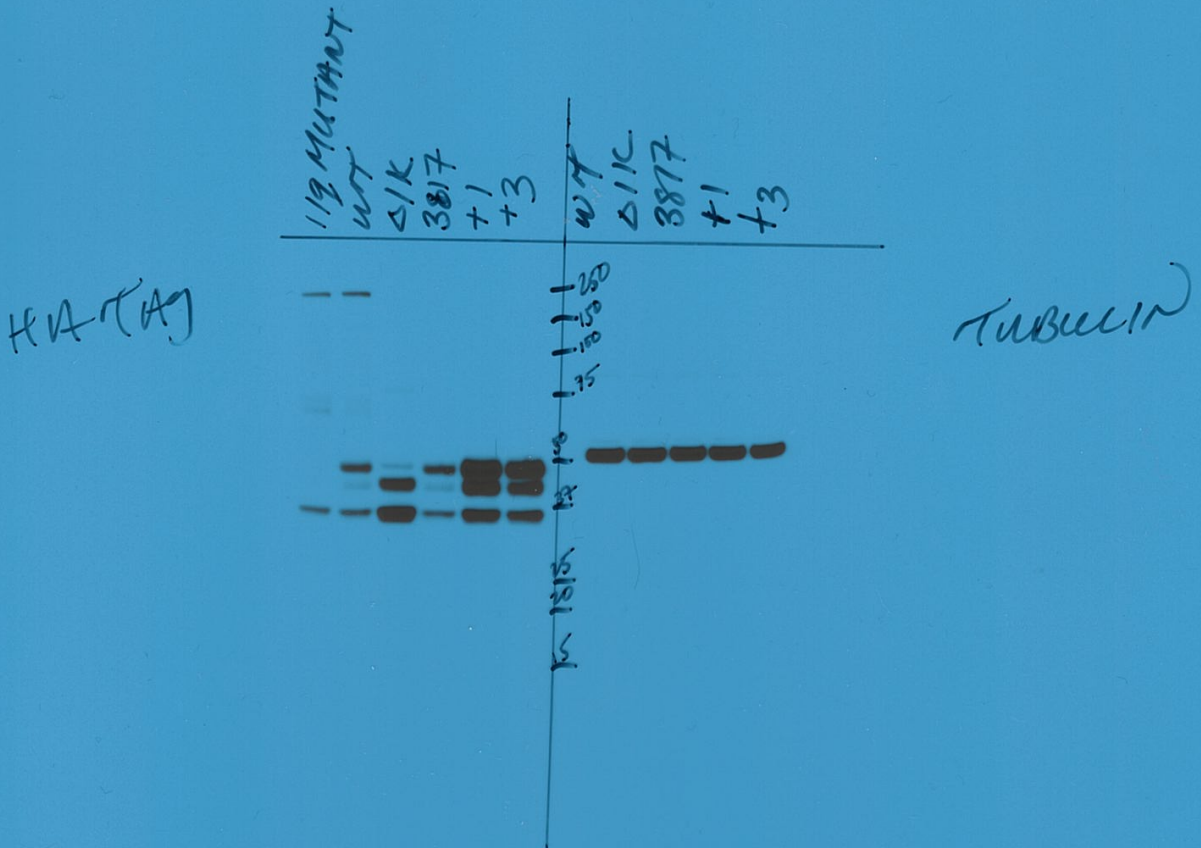


Figure 1H- HA-Tag and Tubulin

PDX SAMPLES

12/9/21



500

①





Figure 1I- Tubulin

