

The Role of [¹⁸F]F-DOPA PET/CT in Diagnostic and Prognostic Assessment of Medullary Thyroid Cancer (MTC): A 15-Year Experience with 109 Patients

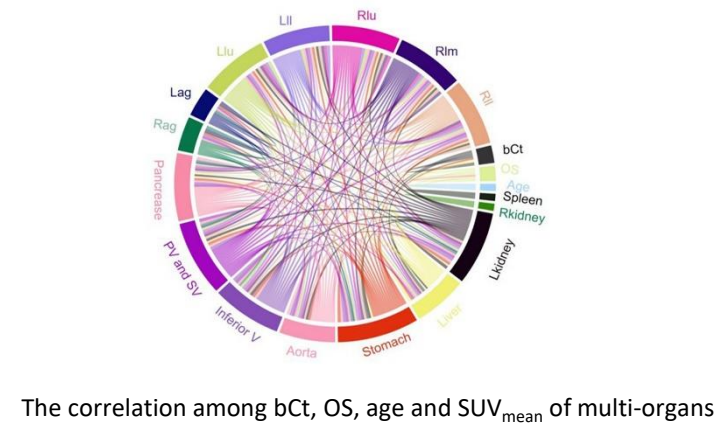
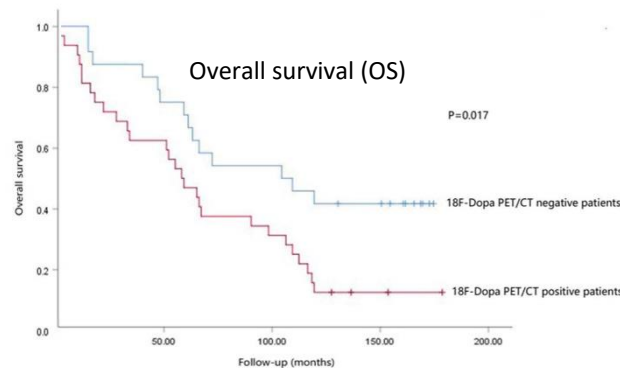
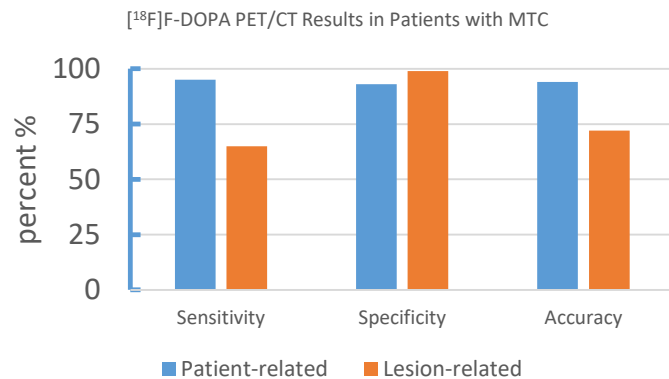
Zhang Z., Yu J., Rainer E., Hargitai L., Jiang Z., Karanikas G., Traub-Weidinger T., Crevenna R., Hacker M., Li S.

1. Methods

Participants: 109 Patients with MTC

Intervention: [¹⁸F]F-DOPA PET/CT ; [¹⁸F]F-DOPA PET Parameter; Basal calcitonin (bCt); Stimulated calcitonin; CEA

2. Results



3. Conclusions

[¹⁸F]F-DOPA PET/CT had great value for diagnosis and prognostic assessment in patients with MTC. The DOPA PET/CT parameter SUV_{mean} and MTV showed significant association to Overall Survival (OS)