

A

Significant correlations in IHC analyses	R	P-value
PTGES normal ductal epithelium vs. PTGES normal ductal stroma	0.629**	0.003x10 ⁻⁵
PTGES normal ductal epithelium vs. TBXAS1 normal ductal epithelium	0.506**	0.002x10 ⁻²
PTGES normal ductal stroma vs. TBXAS1 normal ductal epithelium	0.433**	0.003x10 ⁻¹
PTGES normal ductal stroma vs. TBXAS1 normal ductal stroma	0.399**	0.001
PTGES Metaplasia epithelium vs. TBXAS1 Metaplasia epithelium	0.258*	0.035
PTGES HG PanIN epithelium vs. PTGES HG PanIN stroma	0.488*	0.025
PTGES HG PanIN epithelium vs. TBXAS1 HG PanIN epithelium	0.548*	0.010
PTGIS normal ductal stroma vs. PTGIS normal ductal epithelium	-0.347**	0.005
PTGIS normal ductal epithelium vs. TBXAS1 normal ductal epithelium	-0.356**	0.004
PTGIS normal ductal stroma vs. PTGES normal ductal epithelium	0.468**	0.009x10 ⁻²
PTGIS normal ductal stroma vs. PTGES normal ductal stroma	0.427**	0.004x10 ⁻¹
PTGIS normal ductal stroma vs. TBXAS1 normal ductal epithelium	0.470**	0.009x10 ⁻²
PTGIS normal ductal stroma vs. TBXAS1 normal ductal stroma	0.360**	0.003
PTGIS Metaplasia stroma vs. TBXAS1 Metaplasia stroma	0.406**	0.001
PTGIS WD PDAC stroma vs. TBXAS1 WD PDAC stroma	0.387**	0.005x10 ⁻¹
PTGIS PD PDAC stroma vs. PTGES PD PDAC stroma	-0.313*	0.032
TBXAS1 normal ductal epithelium vs. TBXAS1 normal ductal stroma	0.458**	0.001x10 ⁻¹

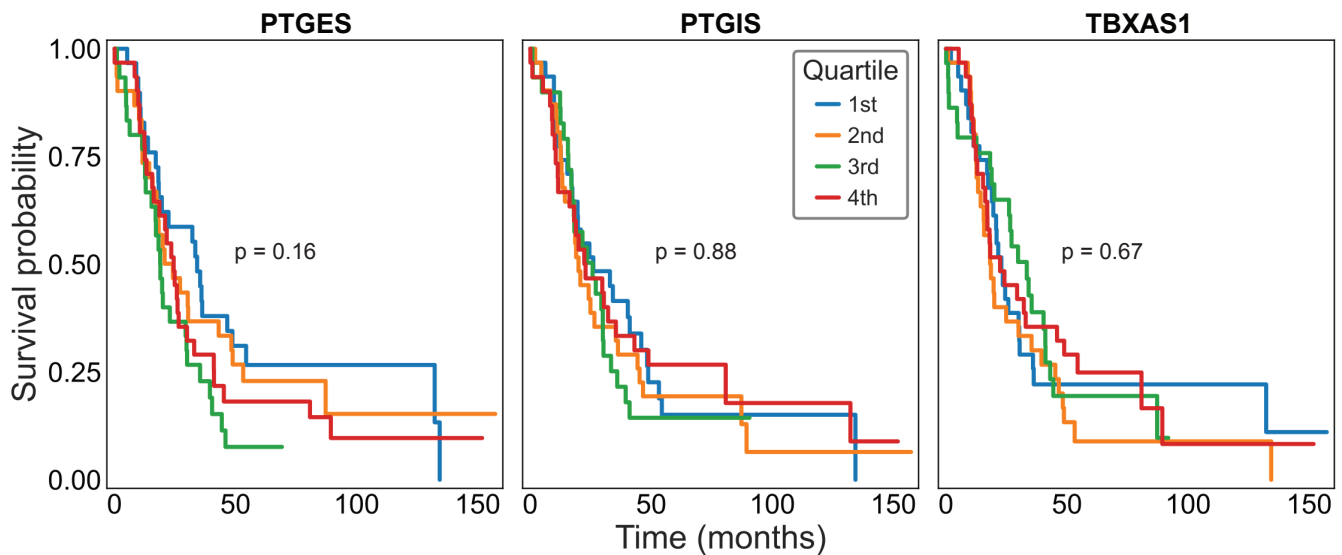
B

Figure S6. Immunohistochemical analysis of eicosanoid synthases in PDAC samples and patient survival associated with expression of select eicosanoid pathway genes. (A) Table of significant correlations identified in the IHC analysis of PTGES, PTGIS, and TBXAS1 expression. Green, normal tissue; purple, diseased tissue. HG, high grade; WD, well differentiated; PD, poorly differentiated. **(B)** Survival curves for stroma-specific expression of PTGES, PTGIS, or TBXAS1 generated from the Maurer et al., dataset representing 124 PDAC patients.