

Immunoblotting protocol is included under Supplementary Information section.

Please note: SDS PAGE analyses of lysates used for immunoblotting utilized prestained MW markers (Precision Plus Protein Dual Color Standards, #1610374, from BIO-RAD).

Following transfer, nitrocellulose membranes were cropped according to migration of prestained MW markers.

Fig1C

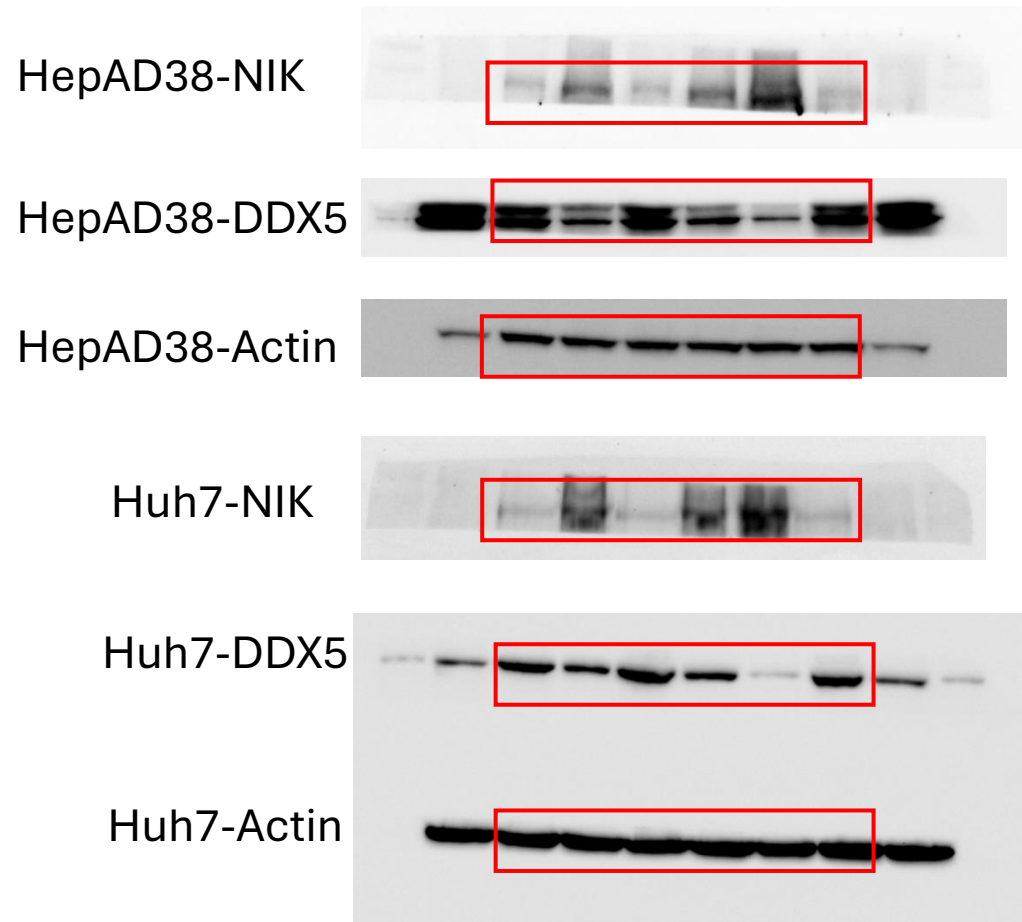


Fig3A

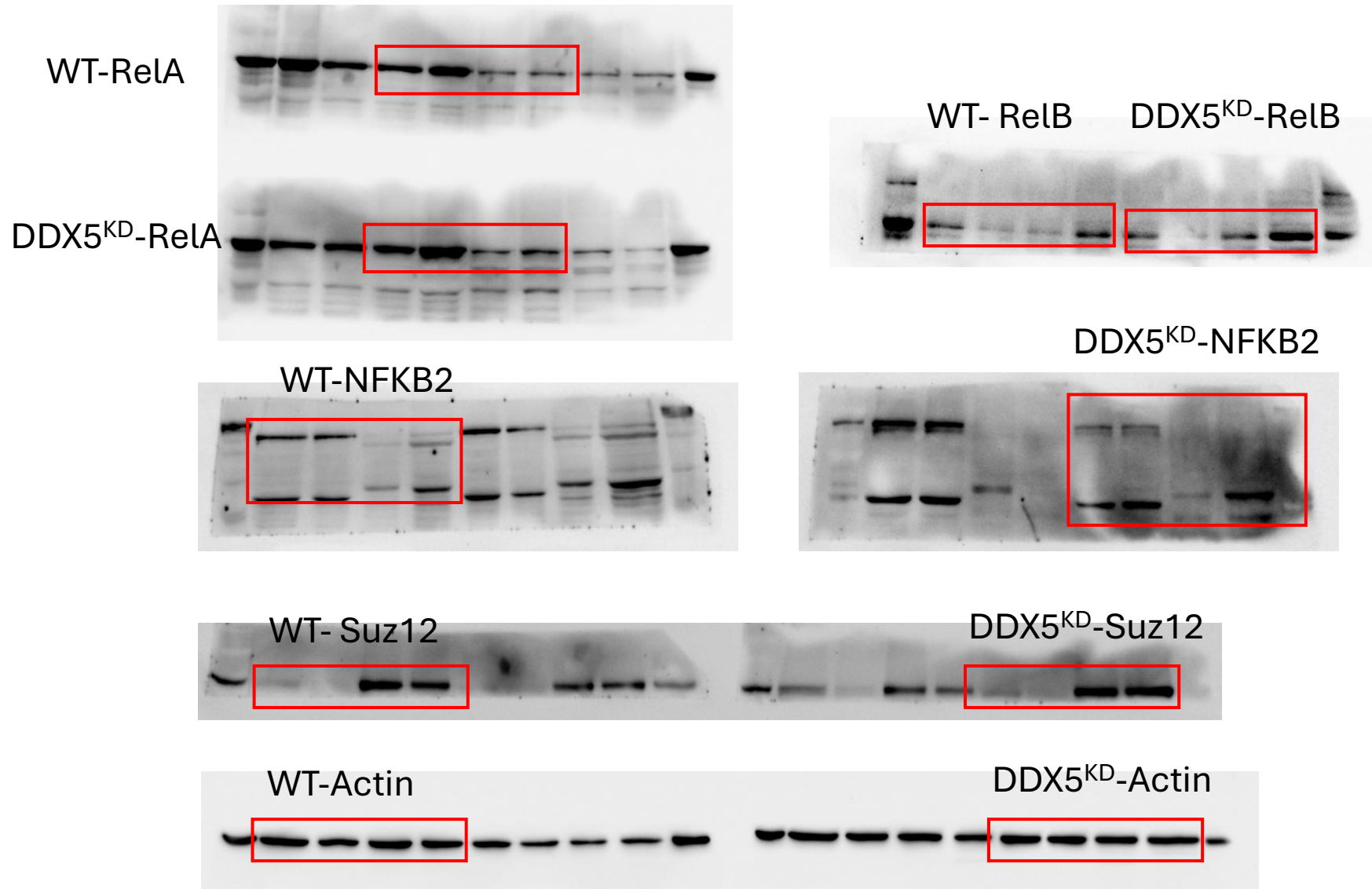


Fig3B

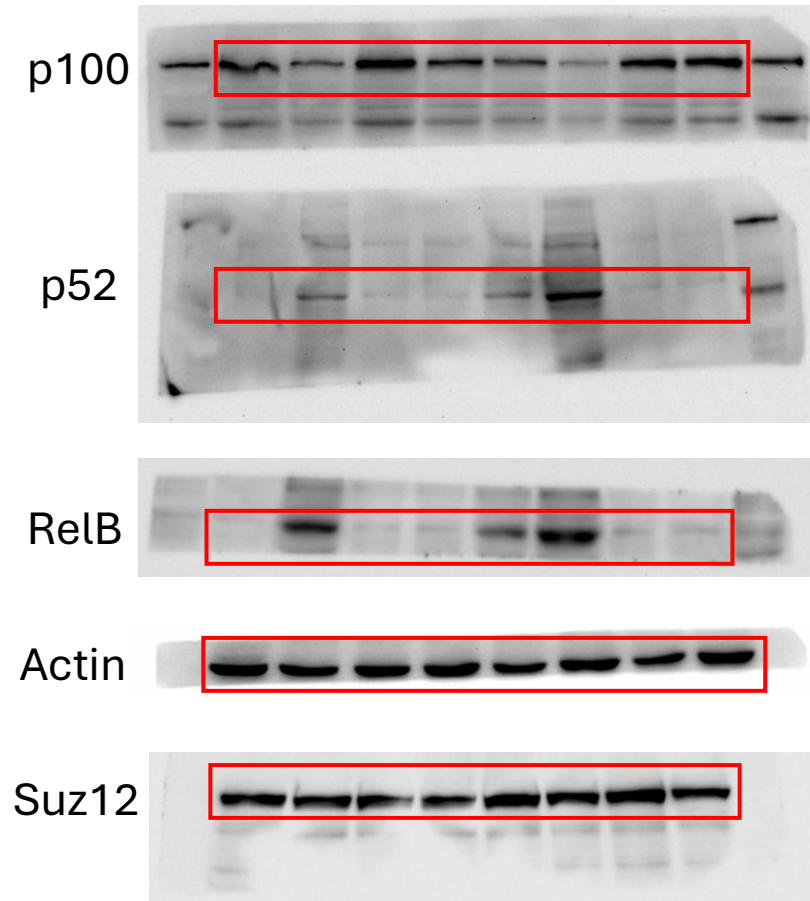


Fig3C

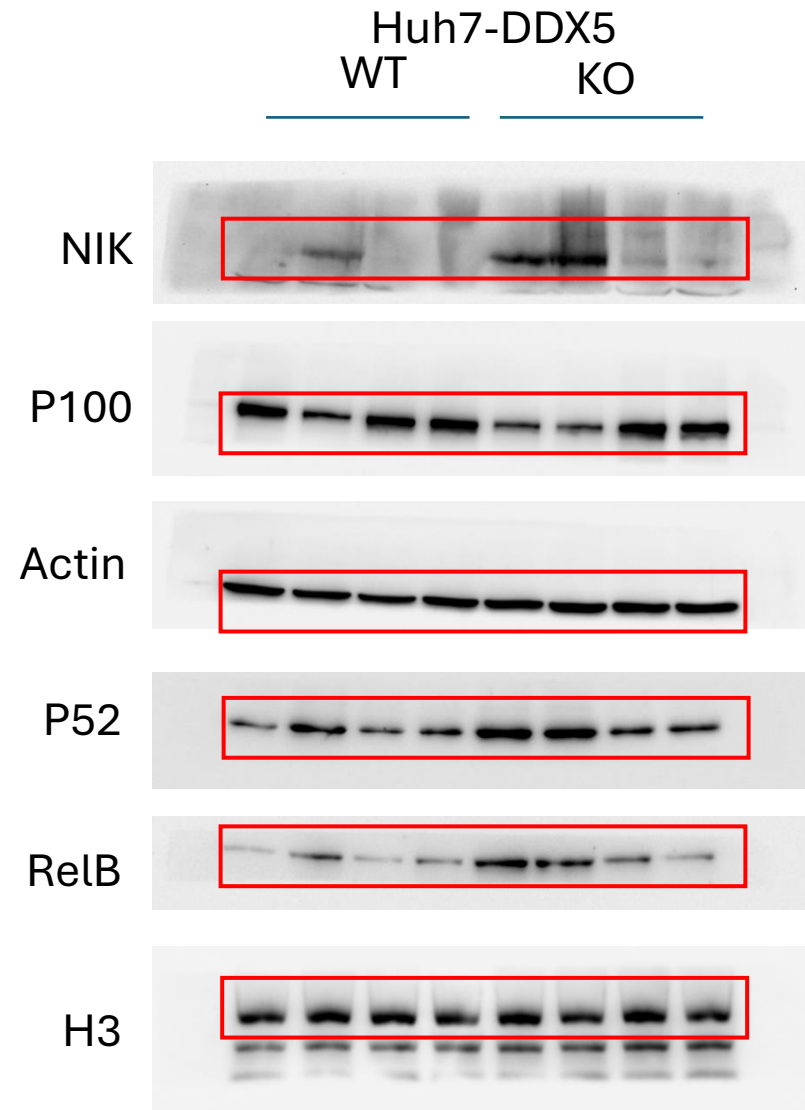
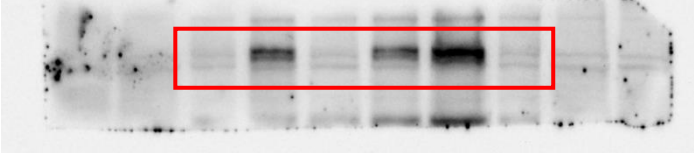
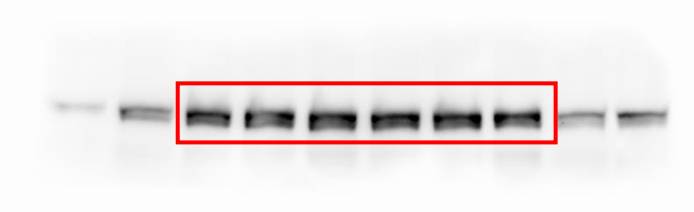


Fig4B

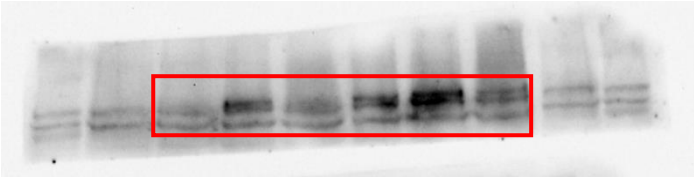
HepAD38-NRF2



HepAD38-Suz12



Huh7-NRF2



Huh7-SUZ12

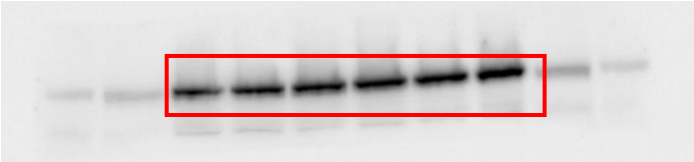


Fig4F

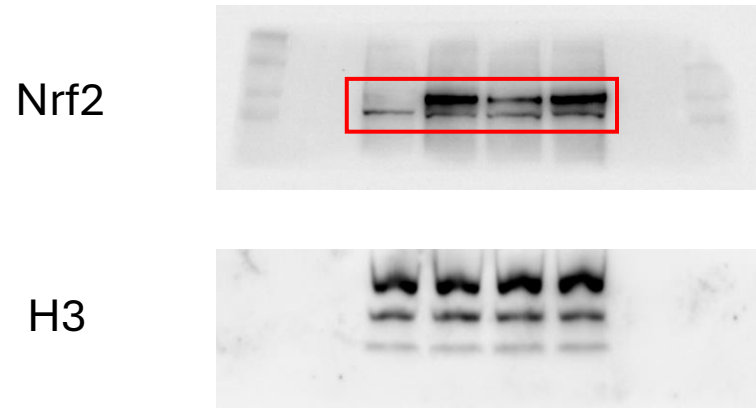


Fig5A

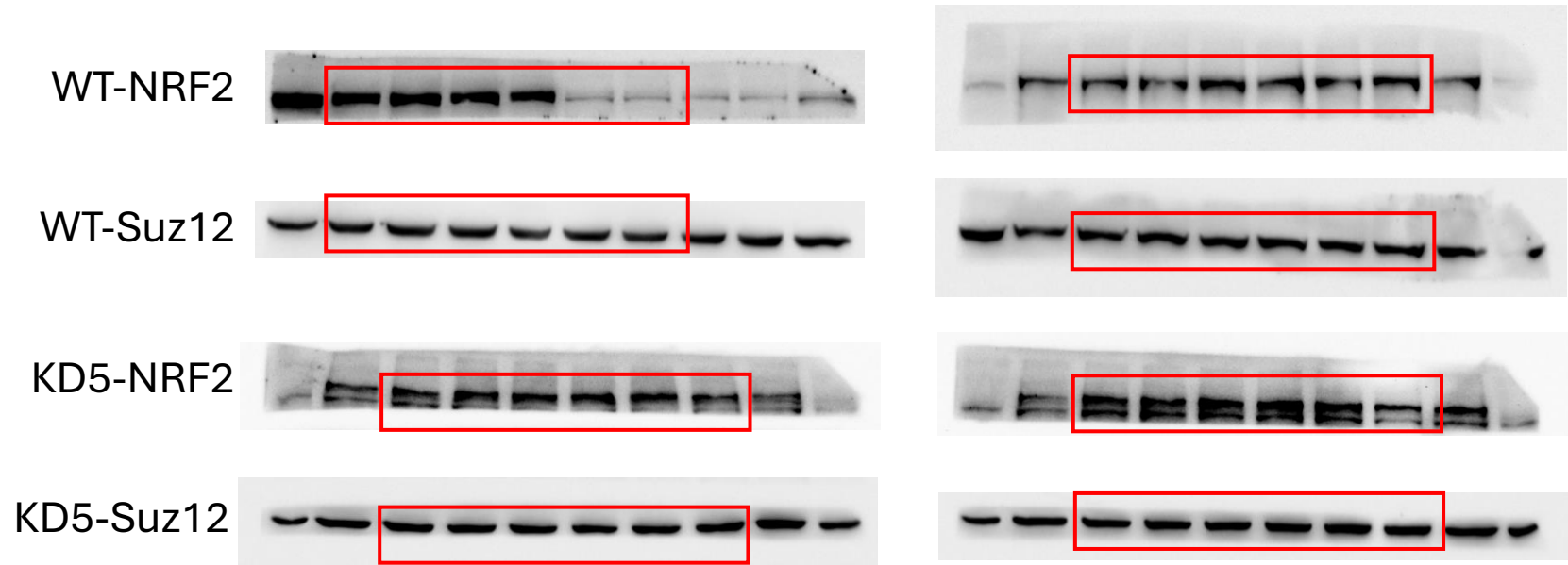


Fig5B

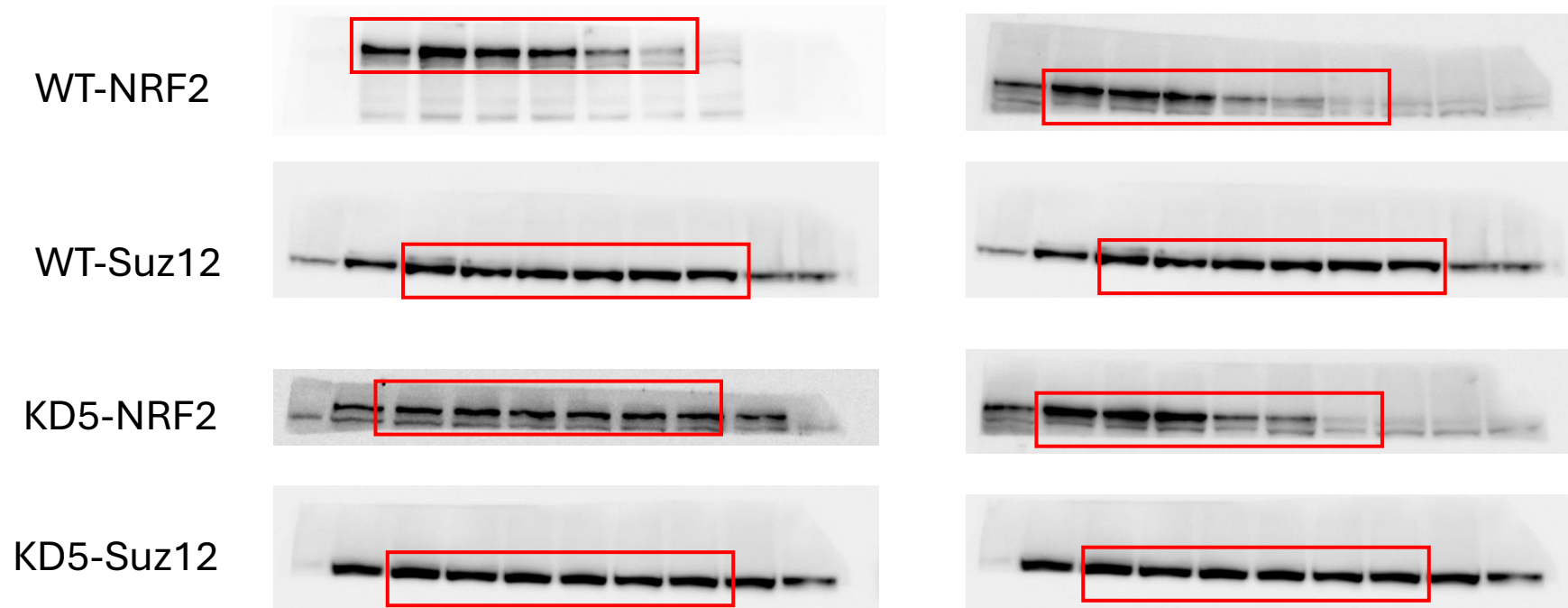
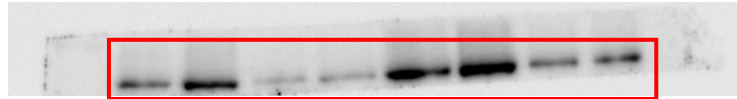
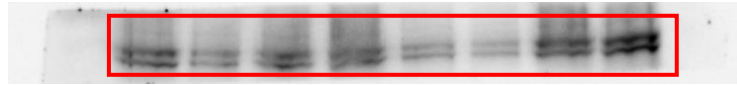


Fig5C

P62



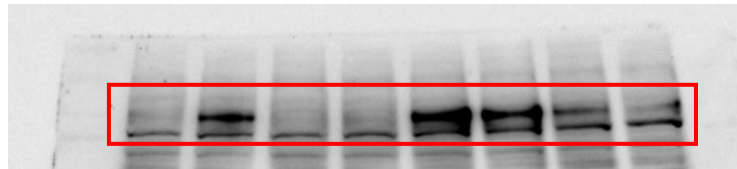
Keap1



Actin



NRF2



H3

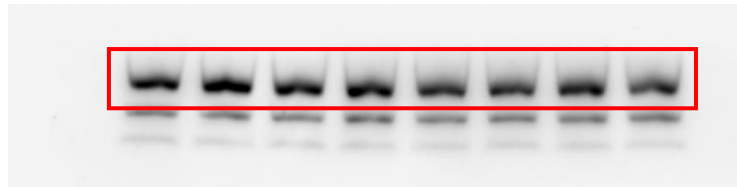


Fig6G

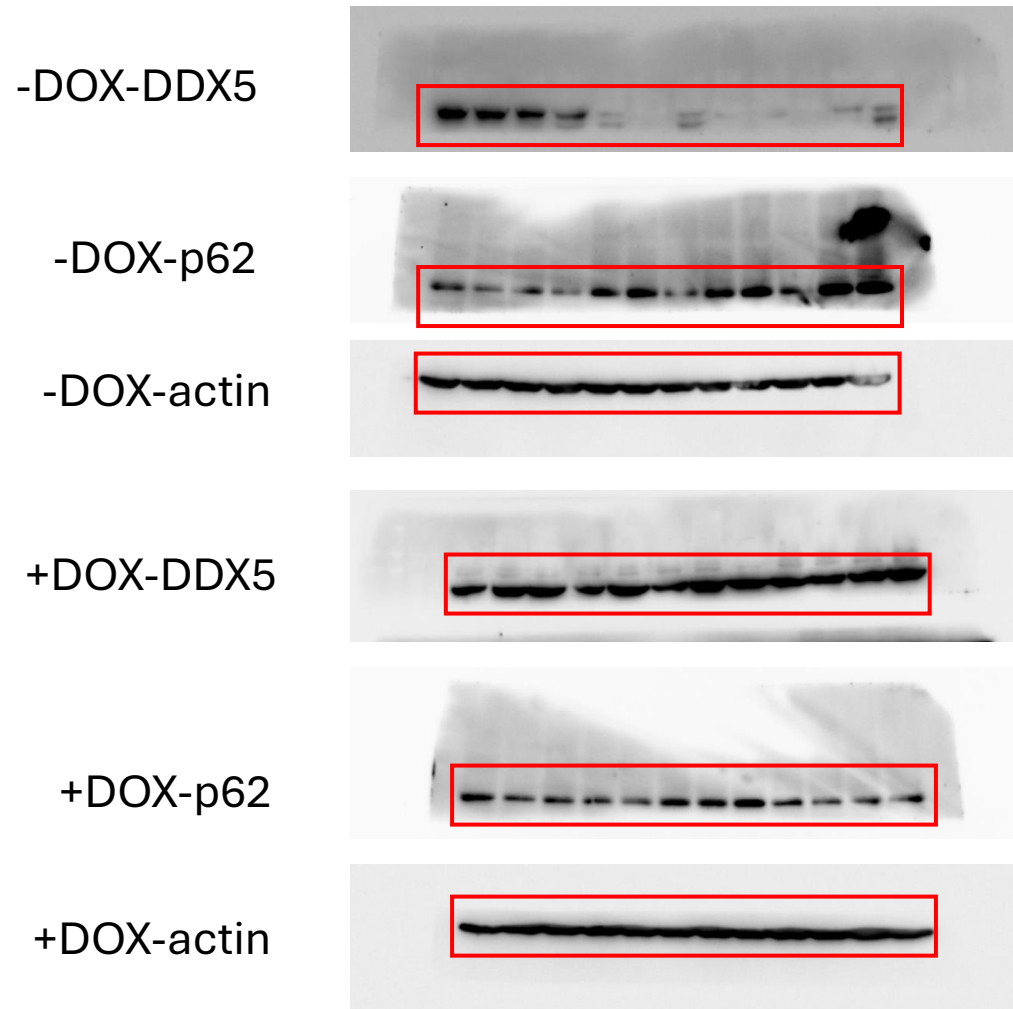
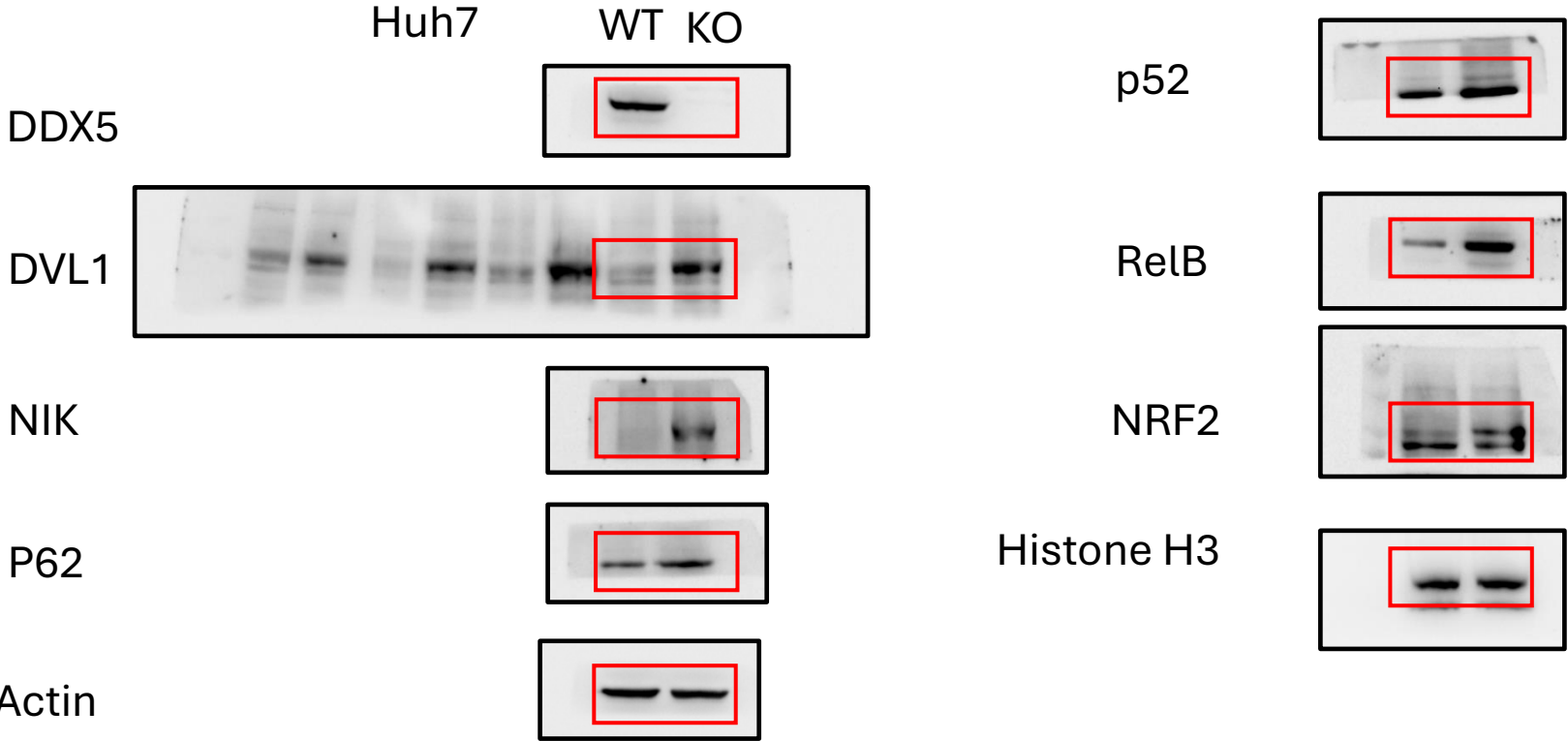


Fig7B



FigS3

SOR-10uM-24H

