

Supplementary Material

The effects of inflammation on connexin 43 in chronic Chagas disease cardiomyopathy

Breno Cardim Barreto^{1,2,3}, Maria Vitória Gomes das Neves^{1,2}, Carine Machado Azevedo Cardoso¹,
Cássio Santana Meira^{1,3}, Pâmela Santana Daltro², Cláudio Pereira Figueira¹, Girlaine Café Santos^{1,2},
Daniela Nascimento Silva³, Fábio Távora⁴, João David de Souza Neto⁴, Simone Garcia
Macambira^{1,2}, Paul D. Lampe⁵, Keyla Cristiny da Silva Coutinho⁶, Tais Hanae Kasai Brunswick⁶,
Ricardo Ribeiro dos Santos^{1,3,†}, Antônio Carlos Campos de Carvalho⁶, Milena Botelho Pereira
Soares^{1,3*}

¹Gonçalo Moniz Institute, Oswaldo Cruz Foundation (IGM-FIOCRUZ/BA), Salvador, Brazil;

²Federal University of Bahia (UFBA), Salvador, Bahia, Brazil;

³SENAI Institute of Innovation in Health Advanced Systems (CIMATEC ISI SAS), University Center
SENAI/CIMATEC, Salvador, Bahia, Brazil;

⁴Messejana Hospital, Fortaleza, Ceará, Brazil;

⁵Fred Hutchinson Cancer Center, Seattle, WA, USA;

⁶Biophysics Institute Carlos Chagas Filho, Federal University of Rio de Janeiro, Rio de Janeiro,
Brazil;

[†]In memoriam

*Corresponding author: Milena Botelho Pereira Soares. Instituto Gonçalo Moniz, Fundação Oswaldo
Cruz. Rua Waldemar Falcão, 121, Candeal, Salvador, Bahia, Brazil. Zip code: 40296-710. Phone:
(+55) 71 31762260; fax: (+55) 71 31762272. Email address: milena.soares@fiocruz.br

Supplementary Figures

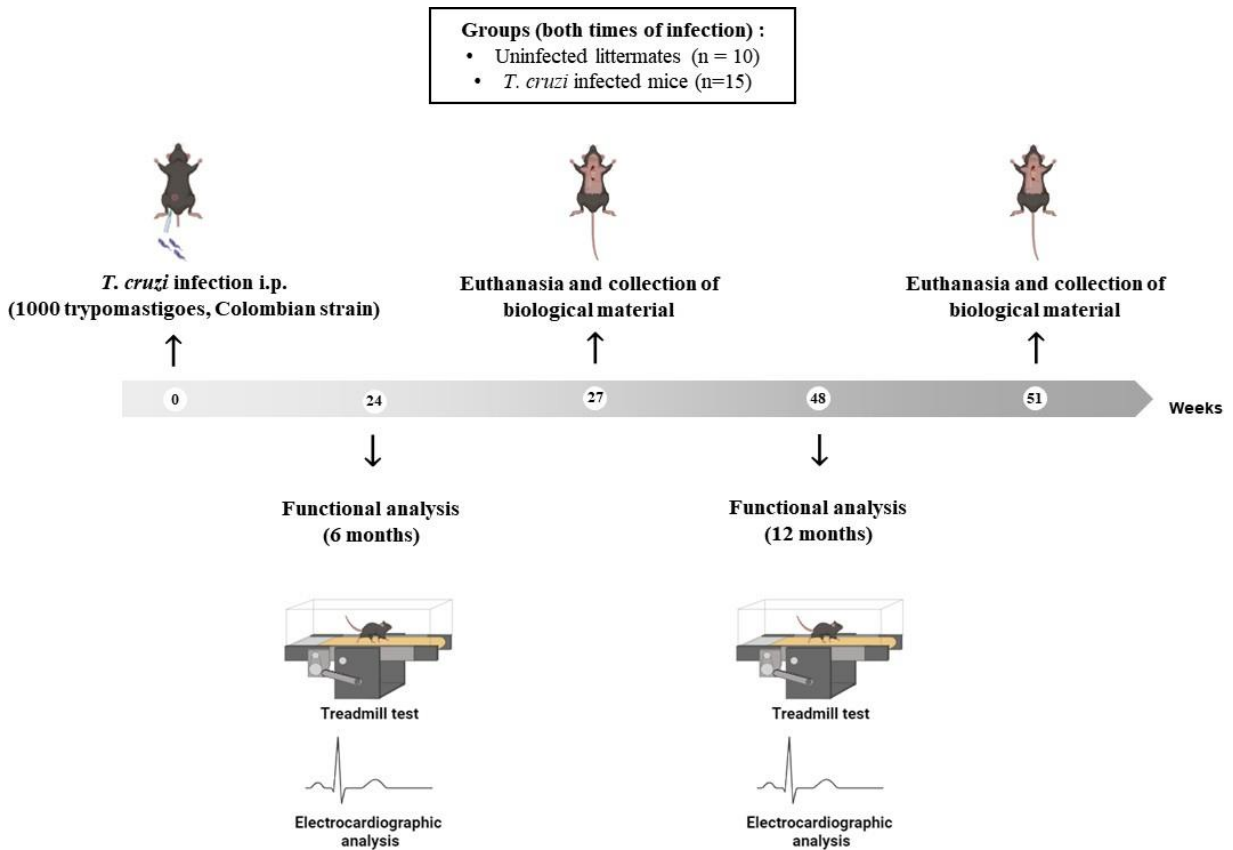


Figure S1. Experimental design: C57BL/6 mice were infected via i.p with 1000 trypomastigotes of *T. cruzi* (Colombian strain), and after 24 and 48 weeks the animals were subjected to functional analyzes (ECG and exercise test) and euthanized for collection of biological materials in weeks 27 and 51, respectively.

Figure S2

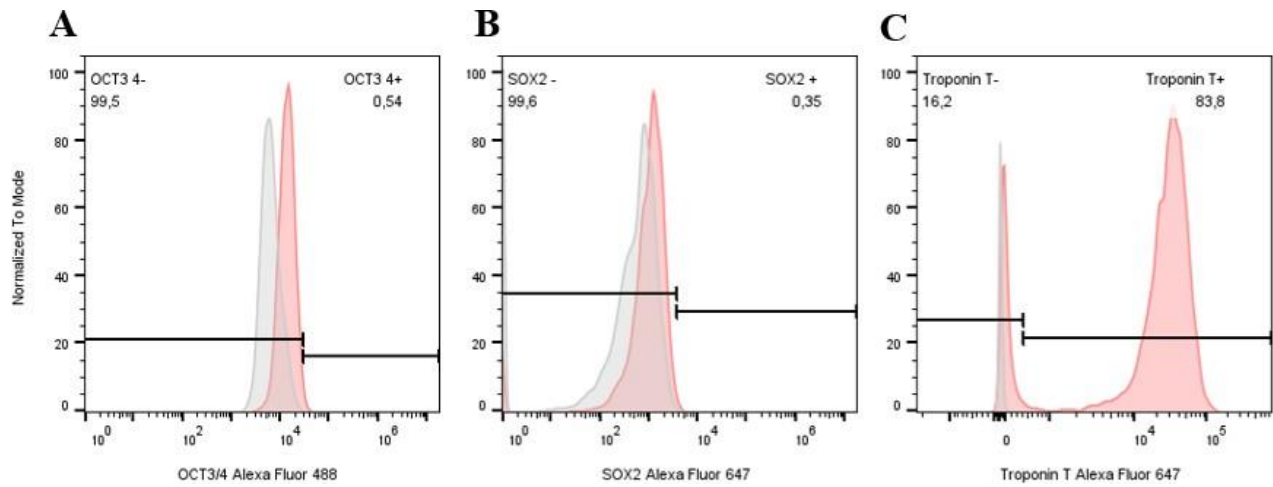


Figure S2. Flow cytometry characterization of iPSC-derived cardiomyocytes. (A-B) Cells were evaluated for the expression of pluripotent markers OCT3/4 and SOX2 respectively; (C) and cardiac protein (Troponin T). Overlay histograms representative of non-stained cells - negative control (gray) - and stained cells (red). The percentage of positive and negative cells for each marker are indicated inside the graphs.

Supplementary Table**Table S1. Characteristics of patients from which cardiac samples were obtained.**

| Patient | Group | Sex | Age | Description |
|----------------|--------------|------------|------------|--|
| AP345 | Non-Chagas | Man | 70 years | Patient without significant cardiomyopathy who died of stomach cancer |
| AP1065 | Chagas | Man | 45 years | Patient with dilated cardiomyopathy associated with chronic inflammatory cardiomyopathy |
| AP829 | Chagas | Man | 63 years | Patient with dilated cardiomyopathy associated with chronic inflammatory cardiomyopathy |
| AP1617 | Chagas | Man | 63 years | Patient with dilated cardiomyopathy, thrombus in the left ventricular wall, mild interstitial fibrosis |