

Western blots

For the following paper:

Mouse Sarcopenia Model Reveals Sex- and Age-Specific Differences in Phenotypic and Molecular Characteristics

Haiming L. Kerr¹, Kora Krumm¹, Barbara Anderson¹, Anthony Christiani¹, Lena Strait¹, Theresa Li¹, Brynn Irwin¹, Siyi Jiang¹, Artur Rybachok¹, Amanda Chen¹, Elizabeth Dacek¹, Lucas Caeiro¹, Gennifer E. Merrihew², James W. MacDonald³, Theo K. Bammler³, Michael J. MacCoss², Jose M. Garcia¹

¹Geriatric Research, Education and Clinical Center, Veterans Affairs Puget Sound Health Care System, Seattle, WA 98108, USA; Gerontology and Geriatric Medicine, University of Washington Department of Medicine, Seattle, WA 98195, USA.

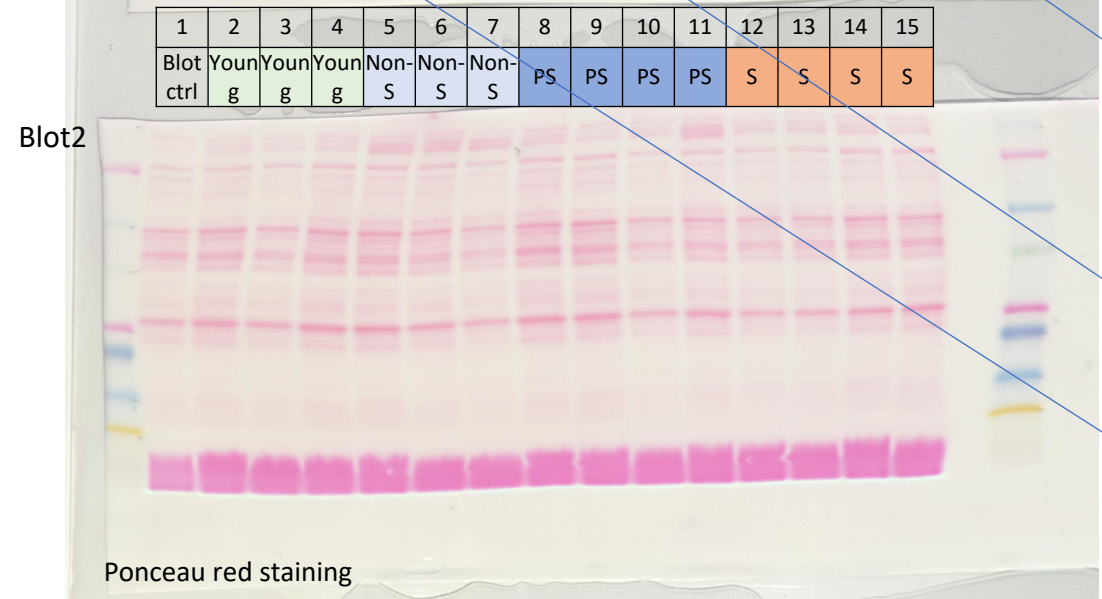
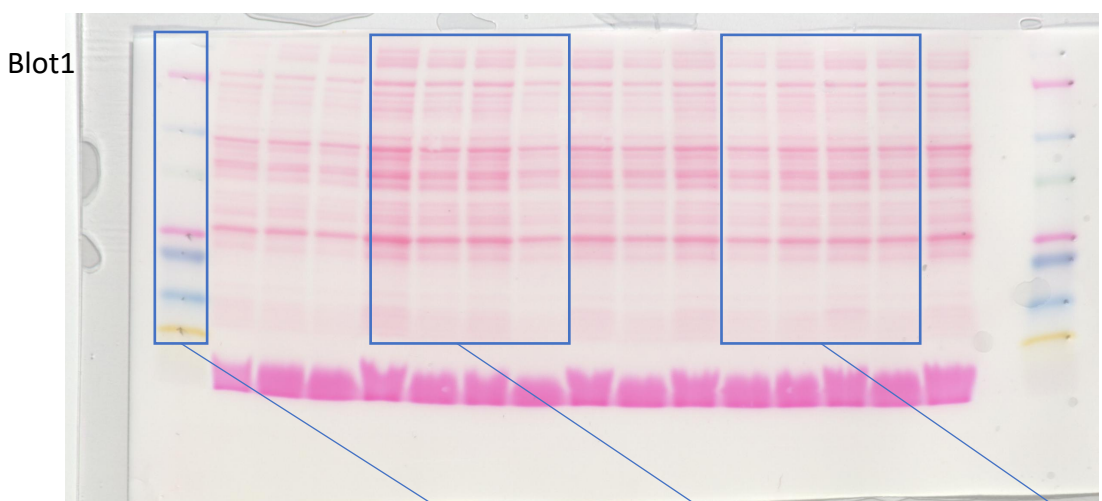
²Department of Genome Sciences, University of Washington, Seattle, WA 98195, USA

³Department of Environmental and Occupational Health Sciences, University of Washington, Seattle, WA 98195, USA

Full unedited blots for Figure 4D

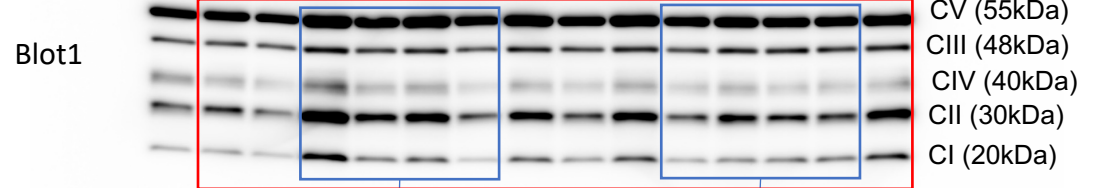
OXPHOS complexes

1	2	3	4	5	6	7	8	9	10	11	12	13	14	15
Blot ctrl	Youn g	Youn g	Youn g	Youn g	Non-S	Non-S	Non-S	Non-S	PS	PS	PS	S	S	S

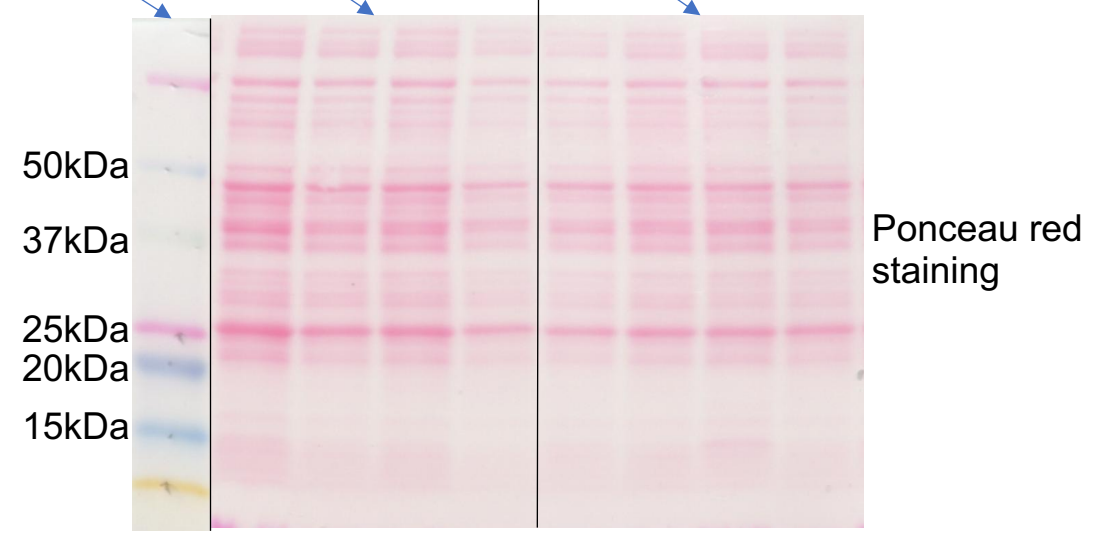
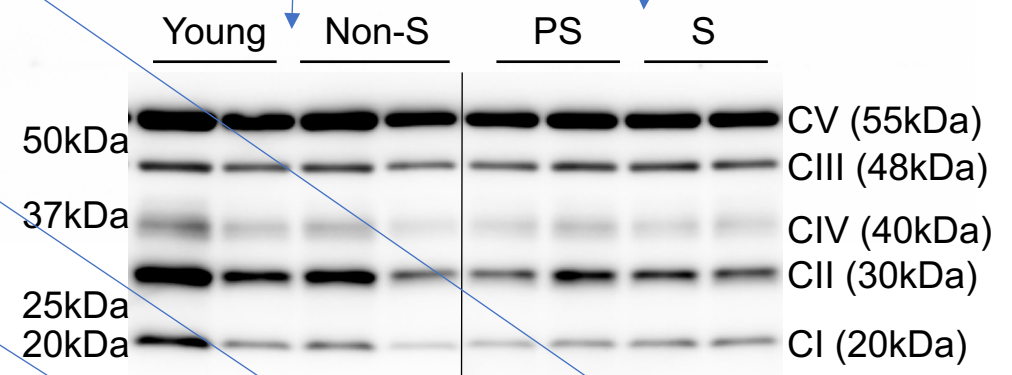
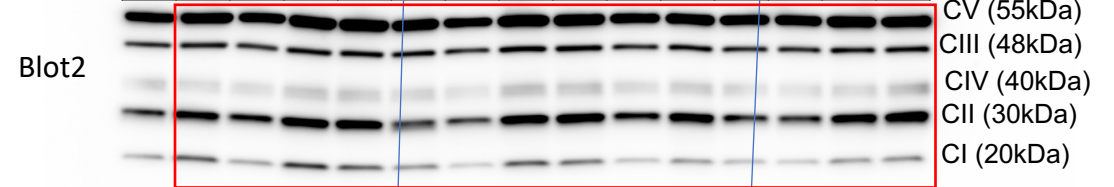


1	2	3	4	5	6	7	8	9	10	11	12	13	14	15
Blot ctrl	Youn g	Youn g	Youn g	Non-S	Non-S	Non-S	PS	PS	PS	PS	S	S	S	S

1	2	3	4	5	6	7	8	9	10	11	12	13	14	15
Blot ctrl	Youn g	Youn g	Youn g	Non-S	Non-S	Non-S	Non-S	PS	PS	PS	S	S	S	S



1	2	3	4	5	6	7	8	9	10	11	12	13	14	15
Blot ctrl	Youn g	Youn g	Youn g	Non-S	Non-S	Non-S	PS	PS	PS	PS	S	S	S	S

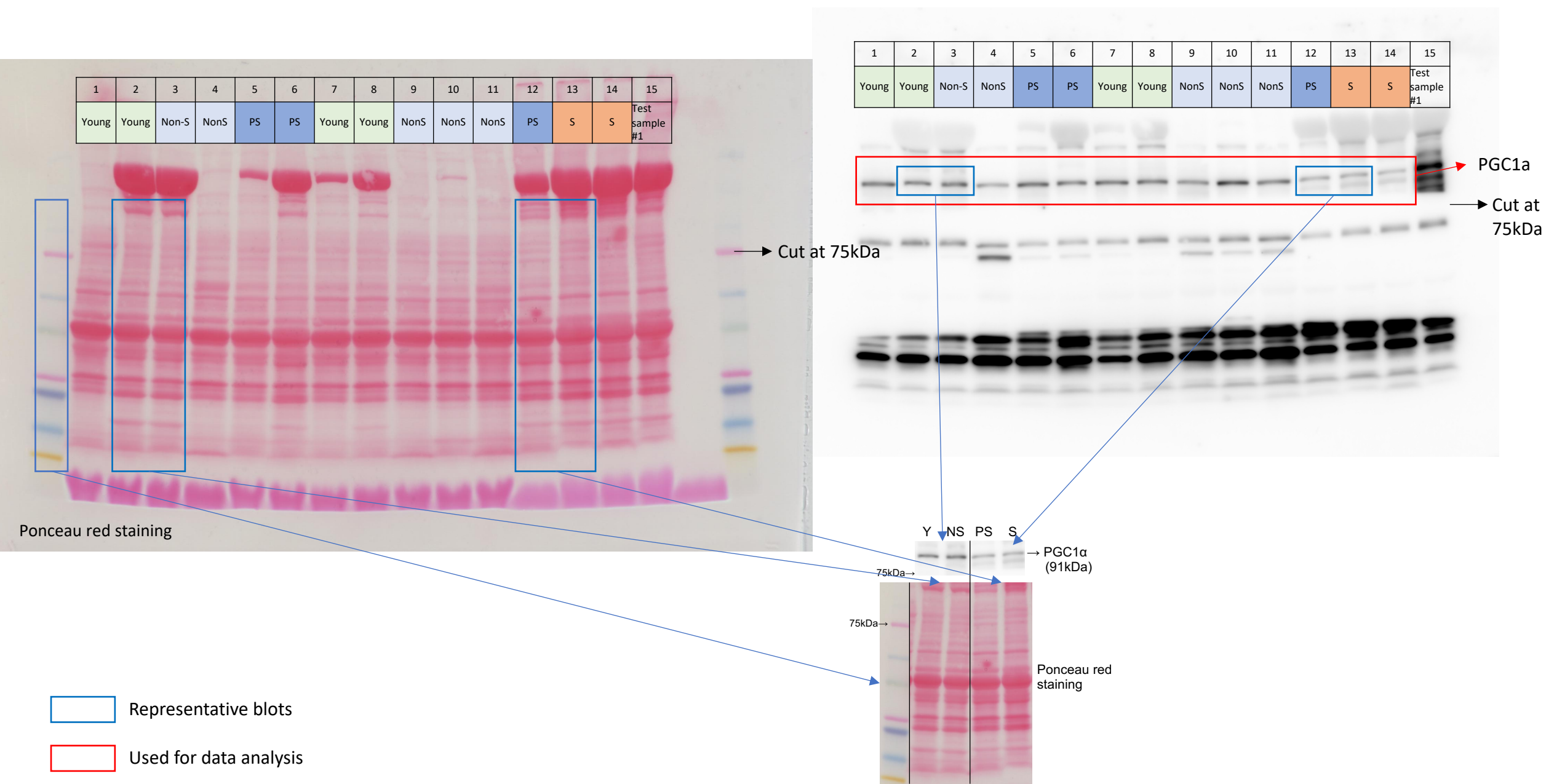


Representative blots

Used for data analysis

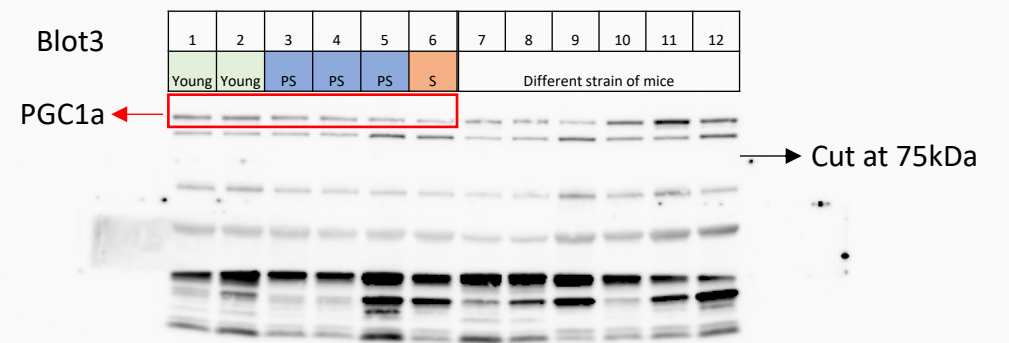
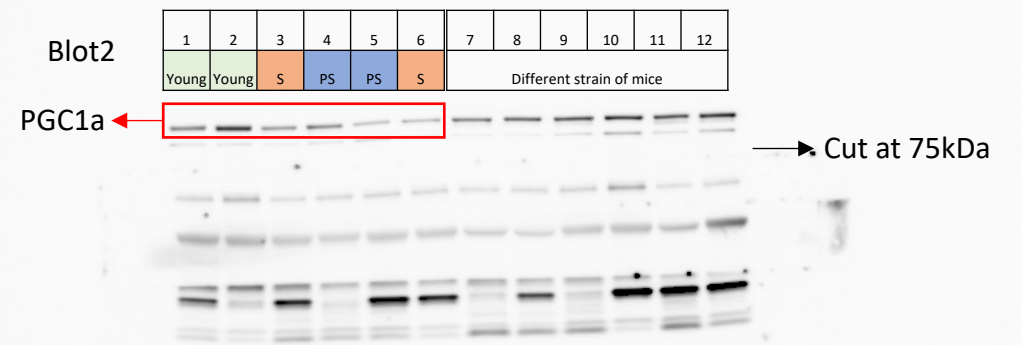
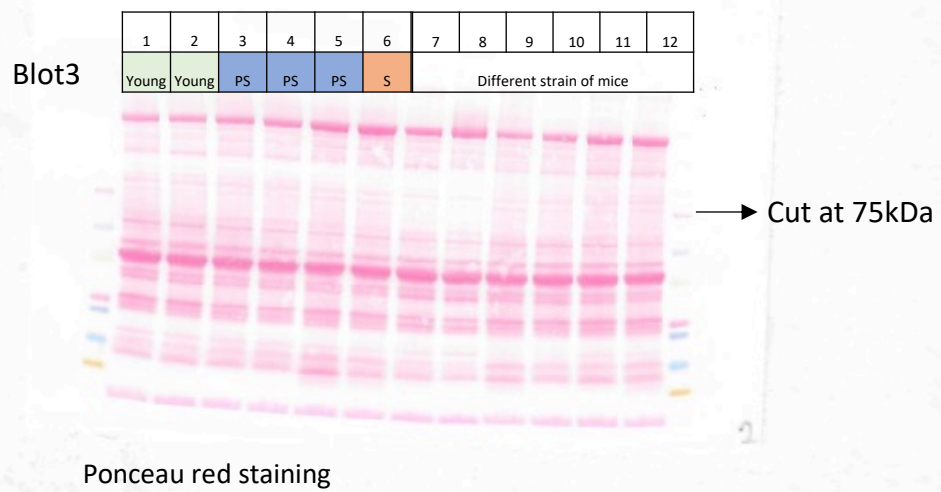
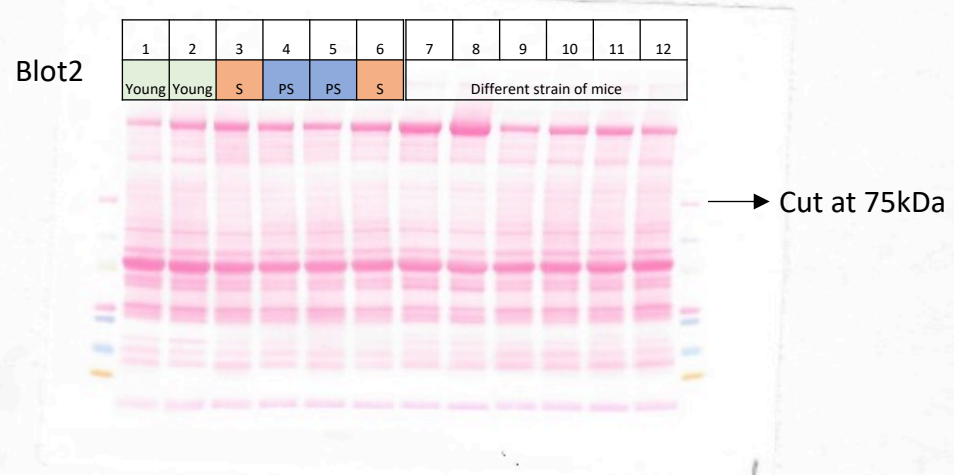
Blots are shown in Fig. 4D

Full unedited blots for Figure 5C
PGC1a blot1



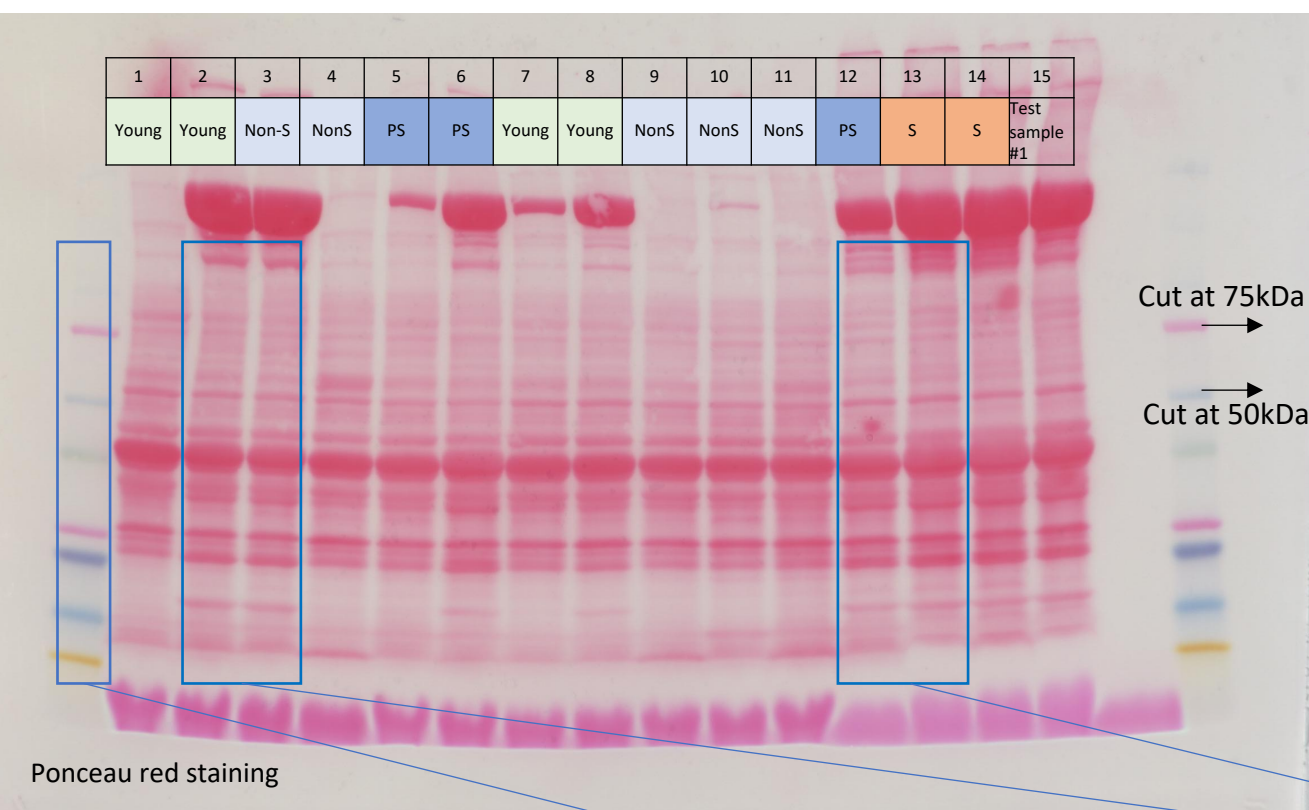
Blots are shown in Fig. 5C

Full unedited blots for Figure 5C
PGC1a blot 2 & 3

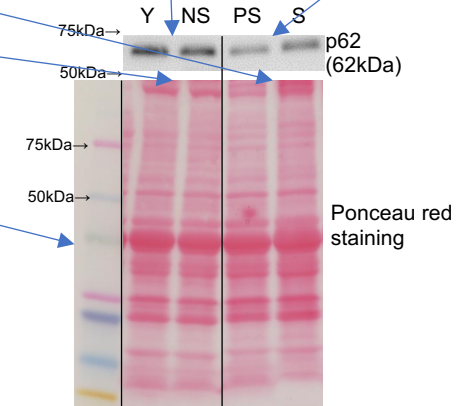


Used for data analysis

Full unedited blots for Figure 6B
p62 blot 1

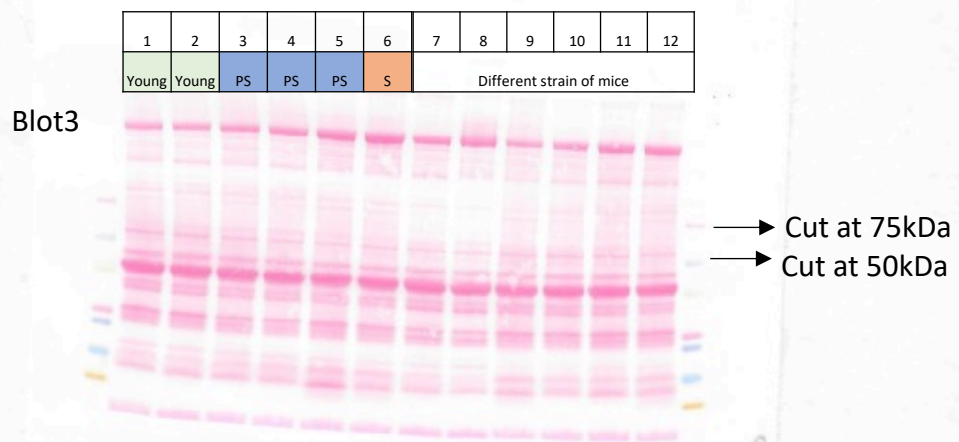
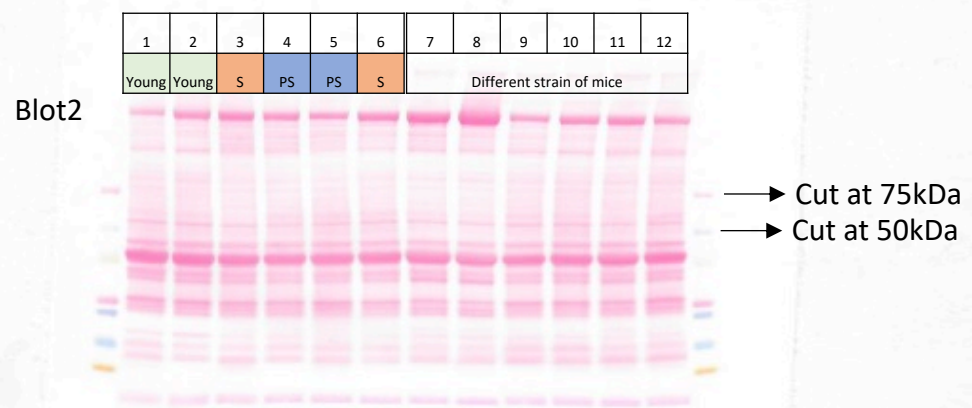


- Representative blots
- Used for data analysis

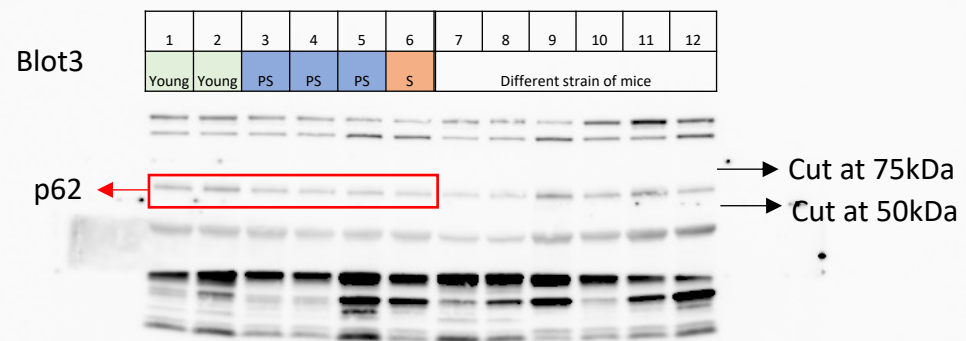


Blots are shown in Fig. 6B

Full unedited blots for Figure 6B
p62 blot 2 & 3

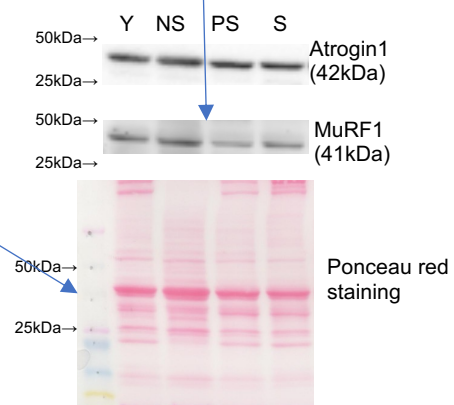
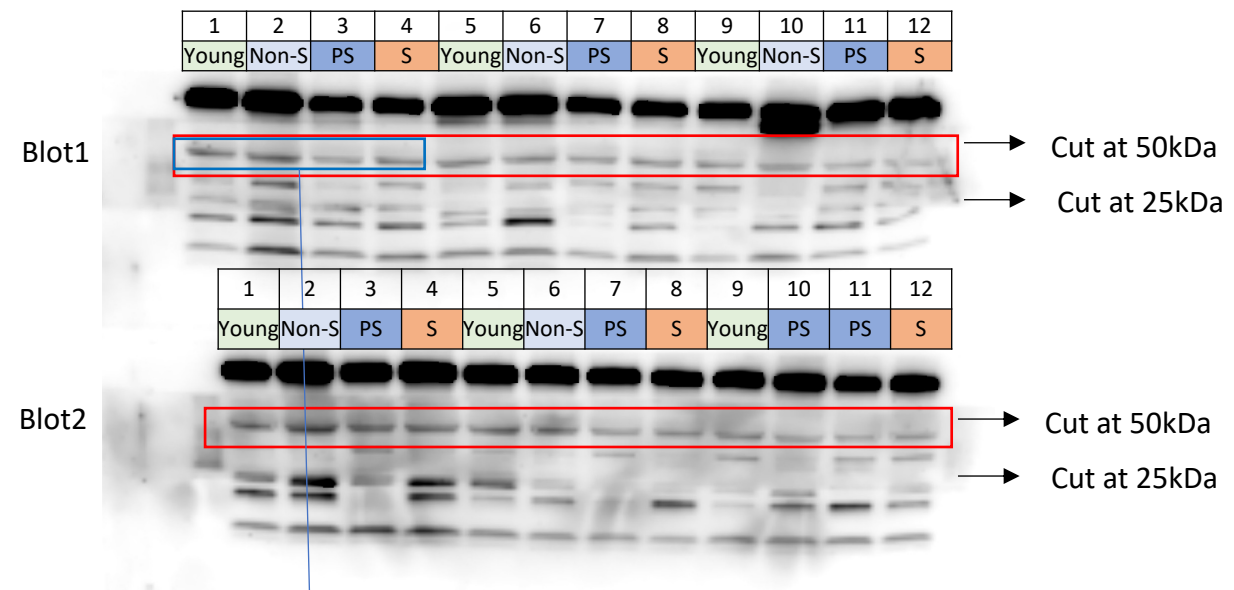
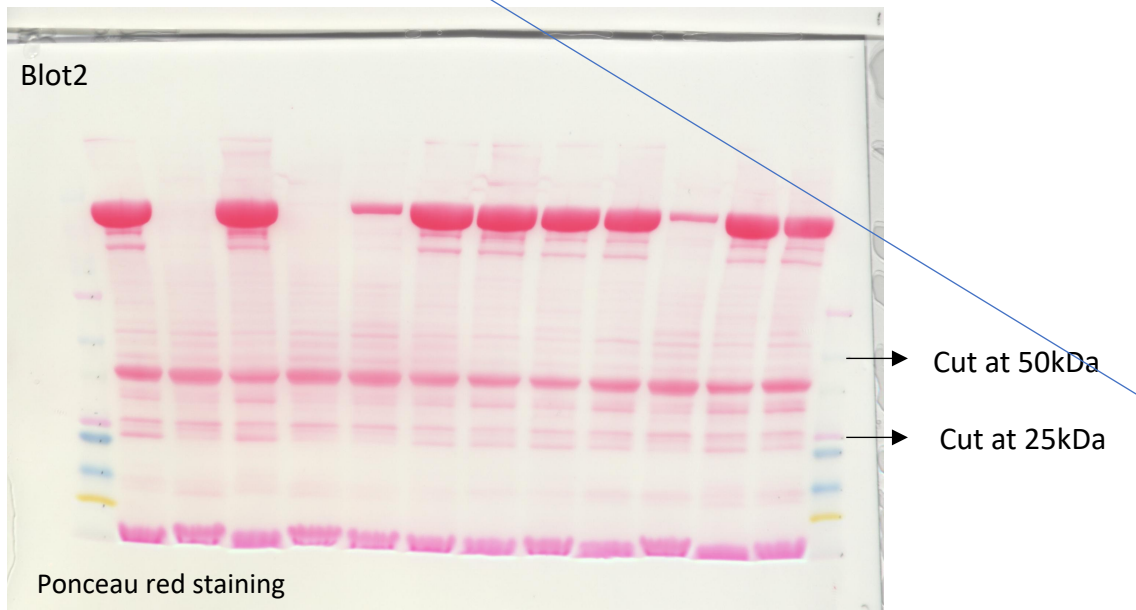
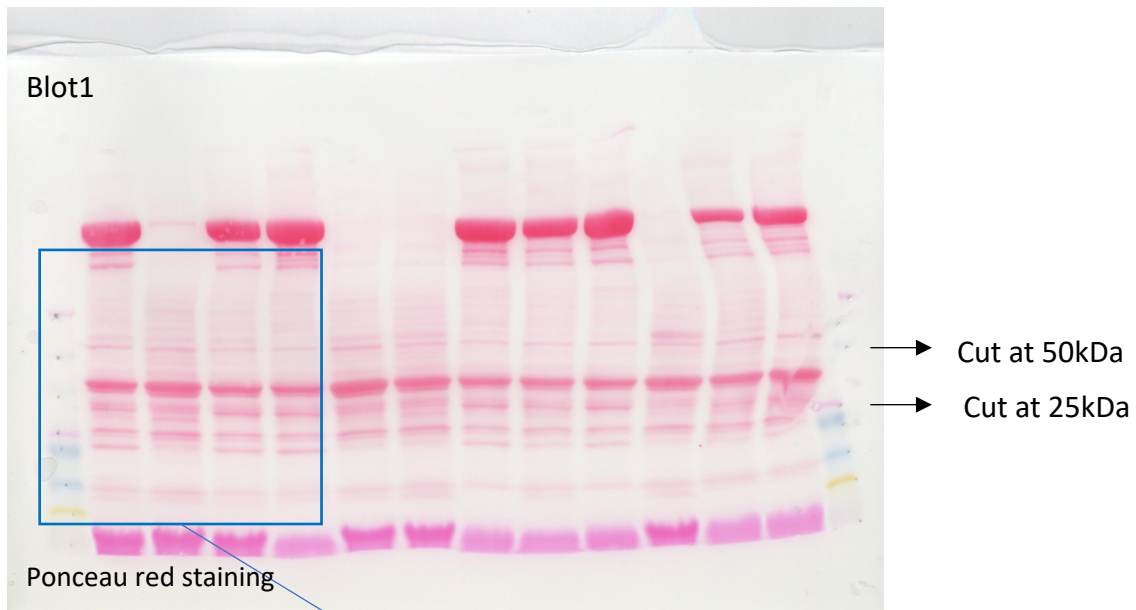


Ponceau red staining



Used for data analysis

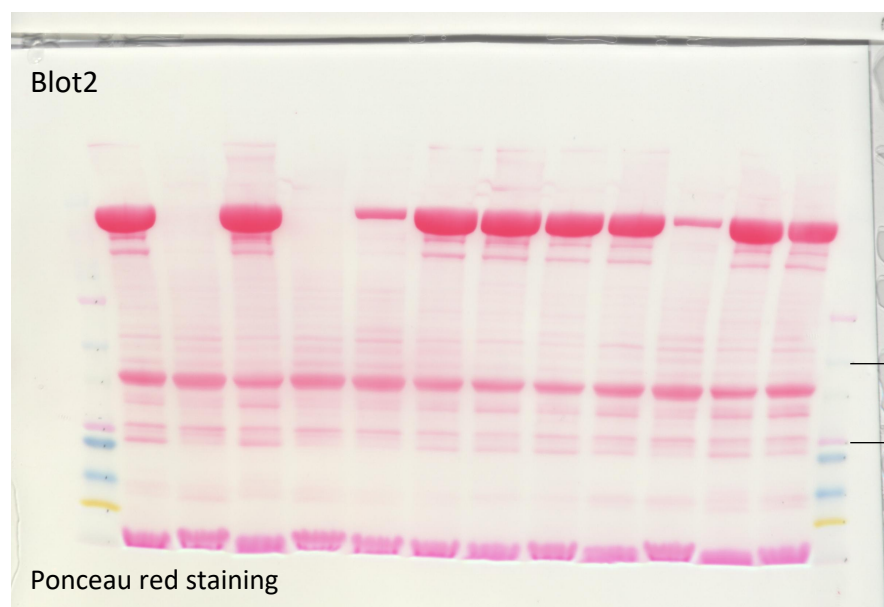
Full unedited blots for Figure 7C
MuRF1 blot1&2



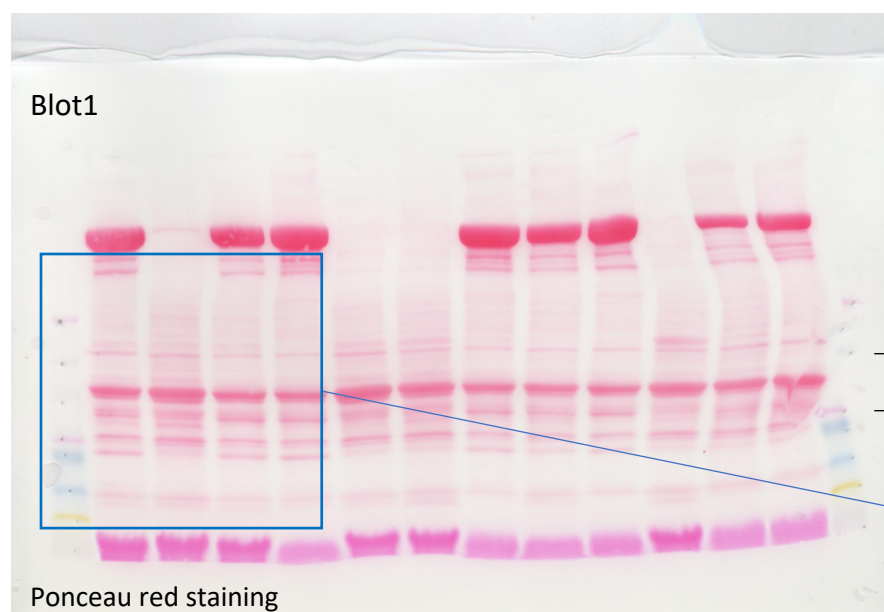
Blots are shown in Fig. 7C

- Representative blots
- Used for data analysis

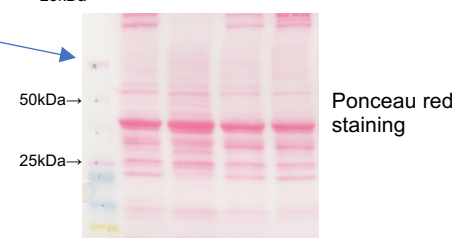
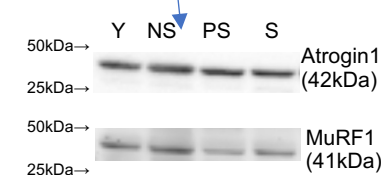
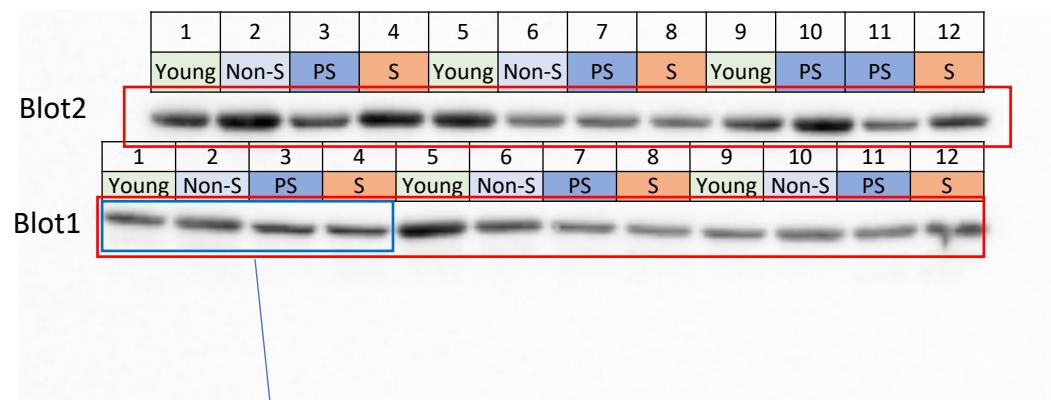
Full unedited blots for Figure 7C
Atrogin1 blot1&2 (Stripped and reprobed after MuRF1)



→ Cut at 50kDa
 → Cut at 25kDa



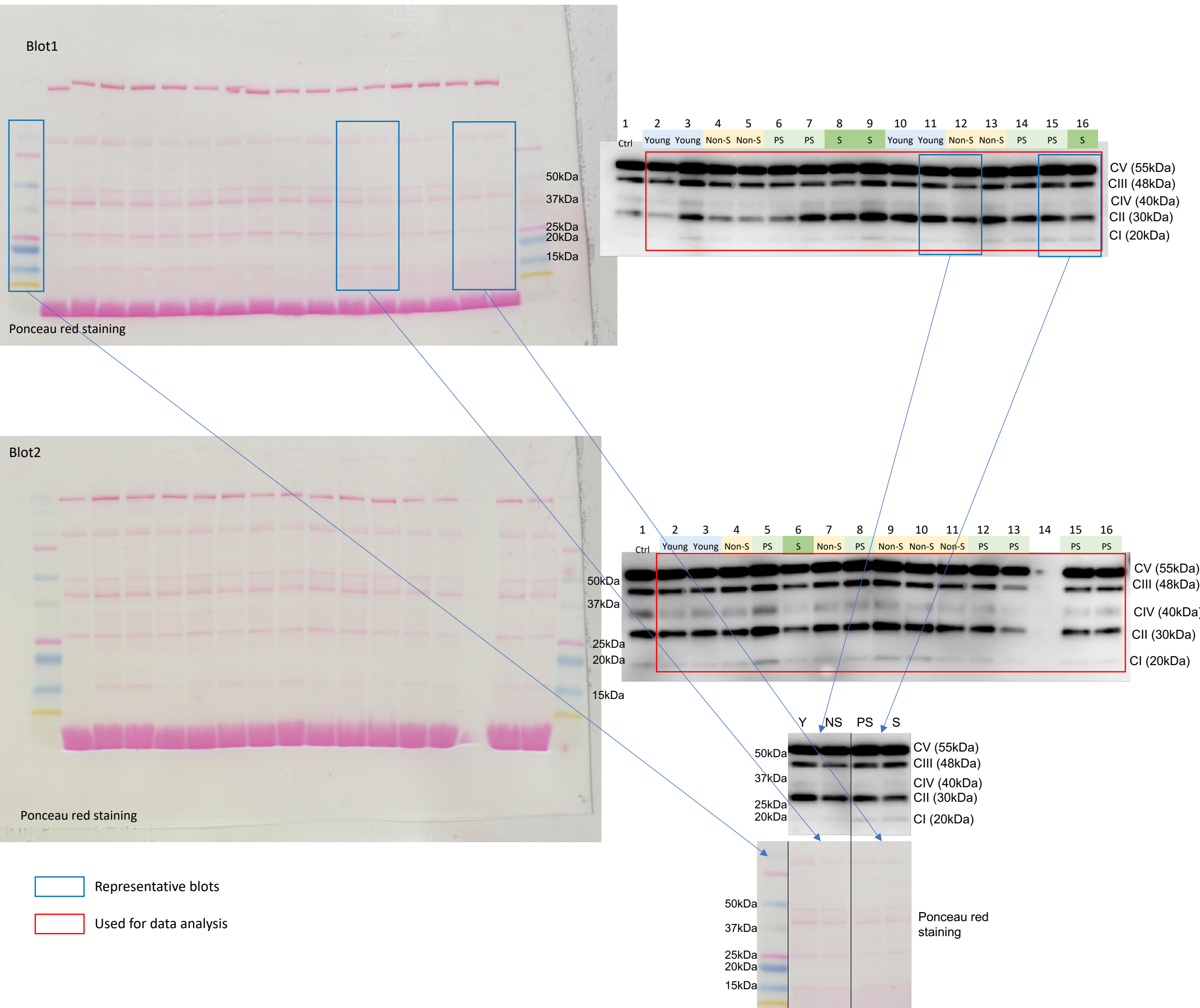
→ Cut at 50kDa
 → Cut at 25kDa



Blots are shown in Fig. 7C

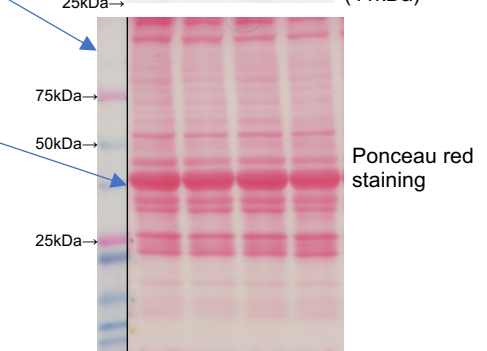
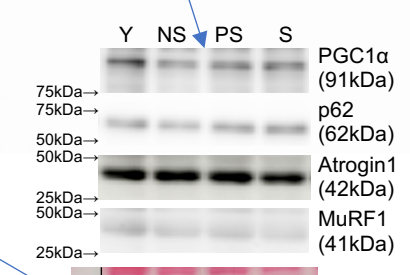
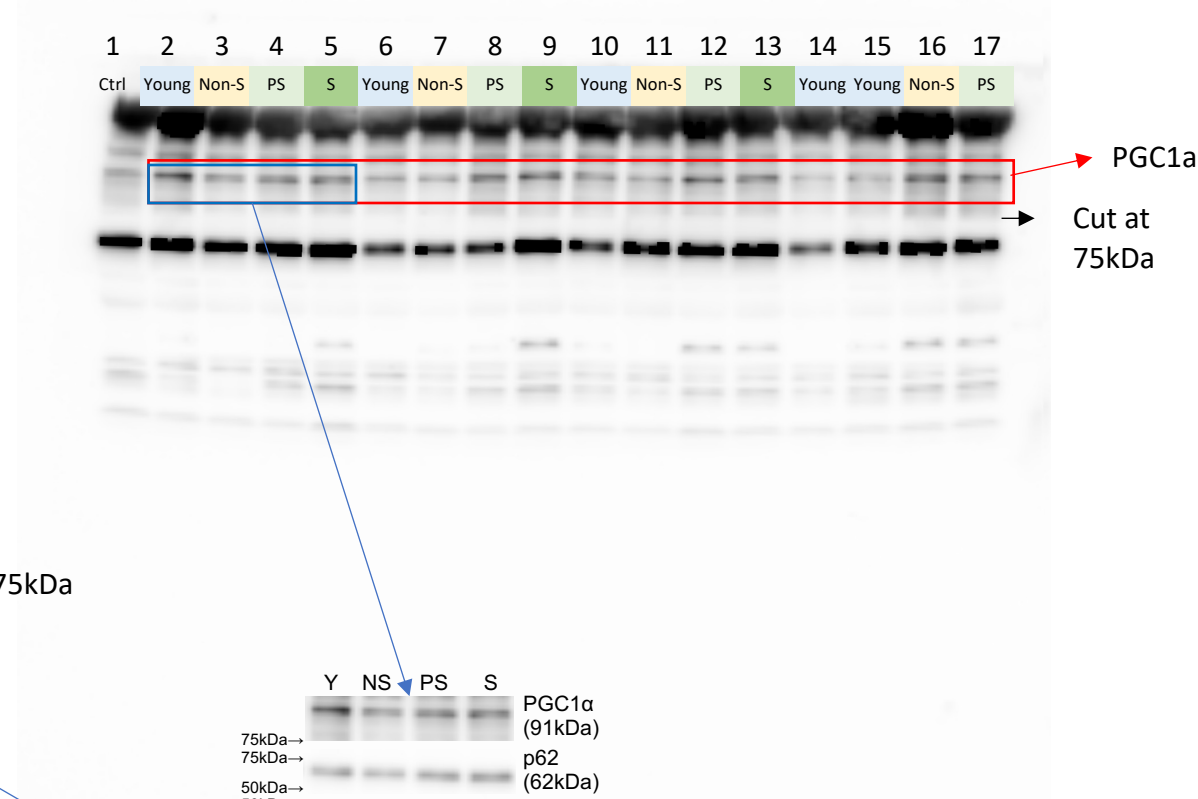
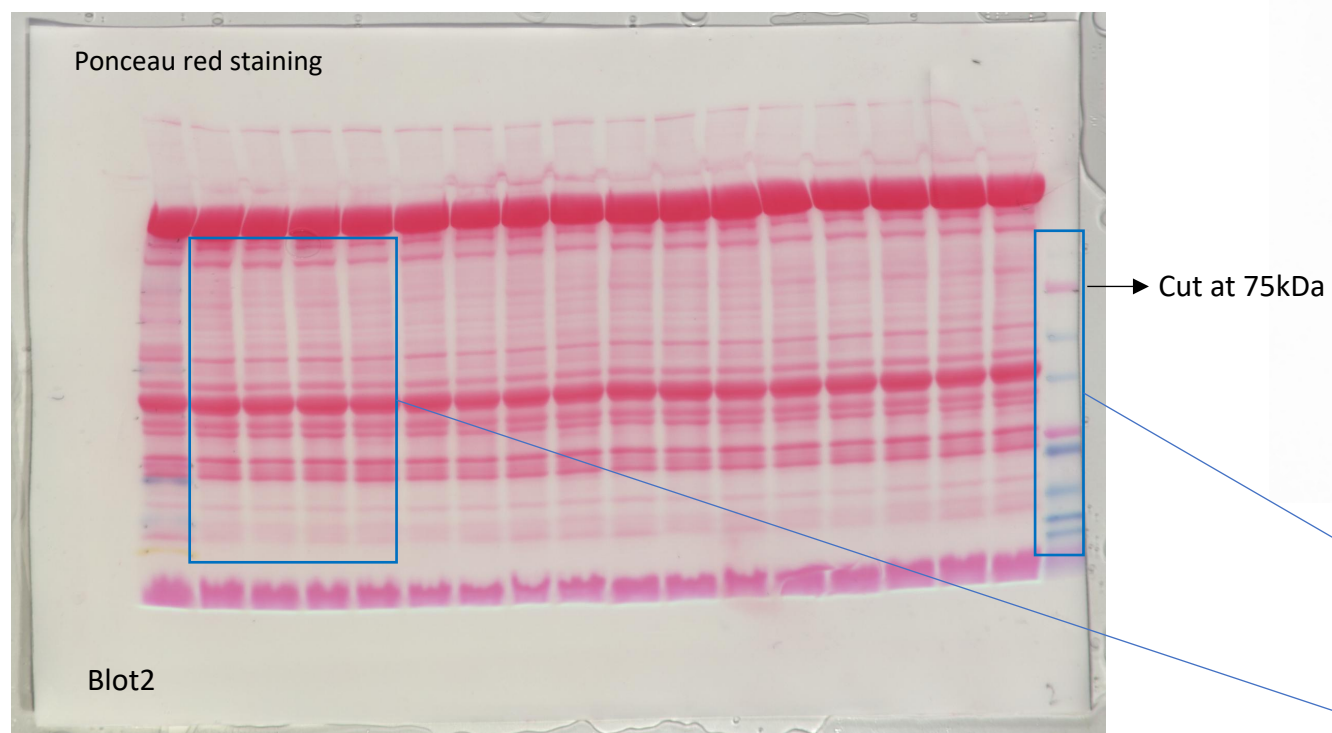
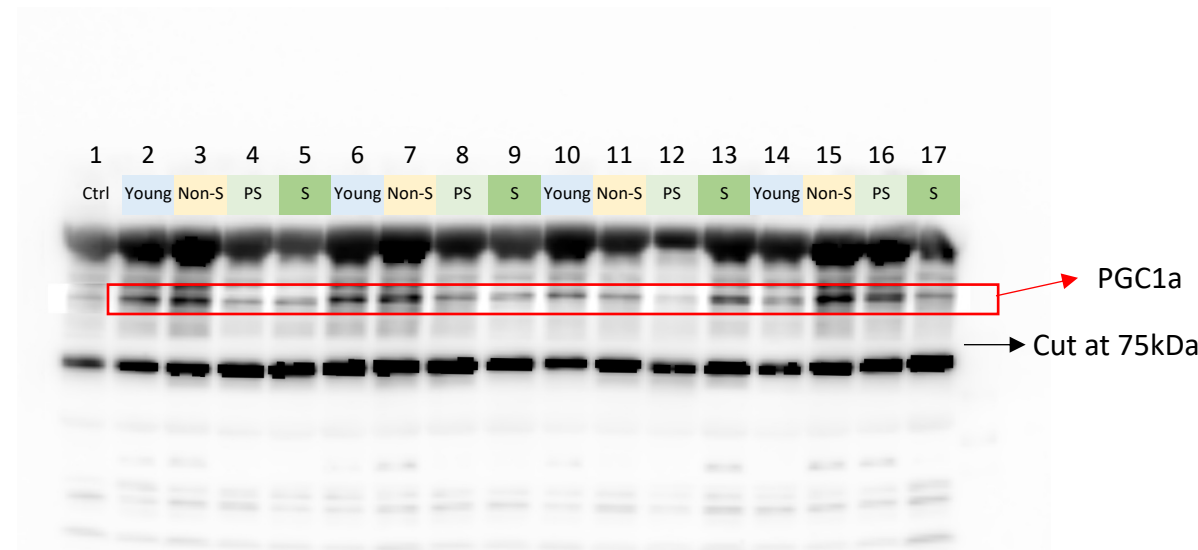
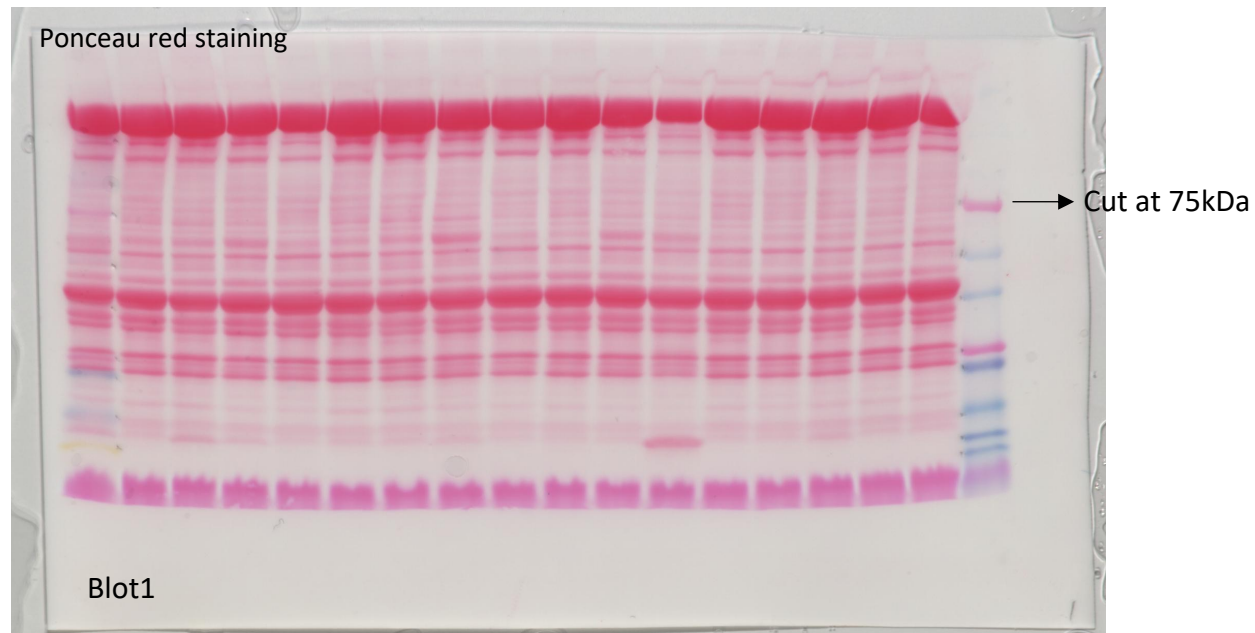
- Representative blots
- Used for data analysis

Full unedited blots for Supplemental Fig.3I OXPHOS complexes



Blots are shown in Supplemental Fig. 3I

Full unedited blots for Supplemental Fig.3J
PGC1a in females

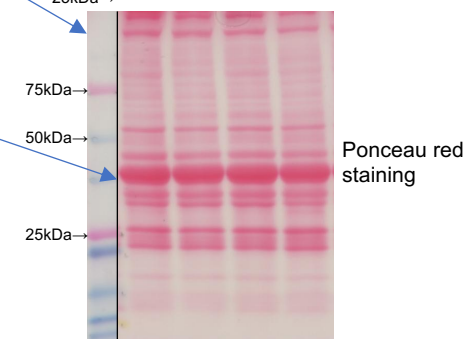
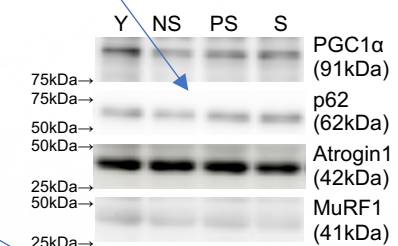
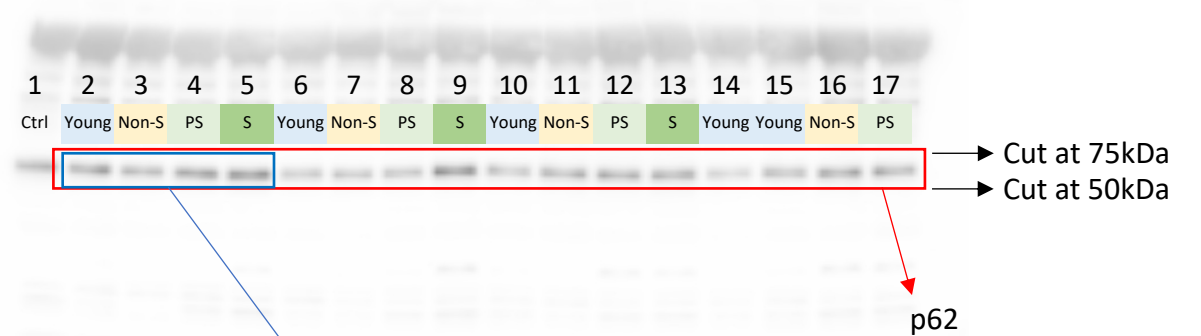
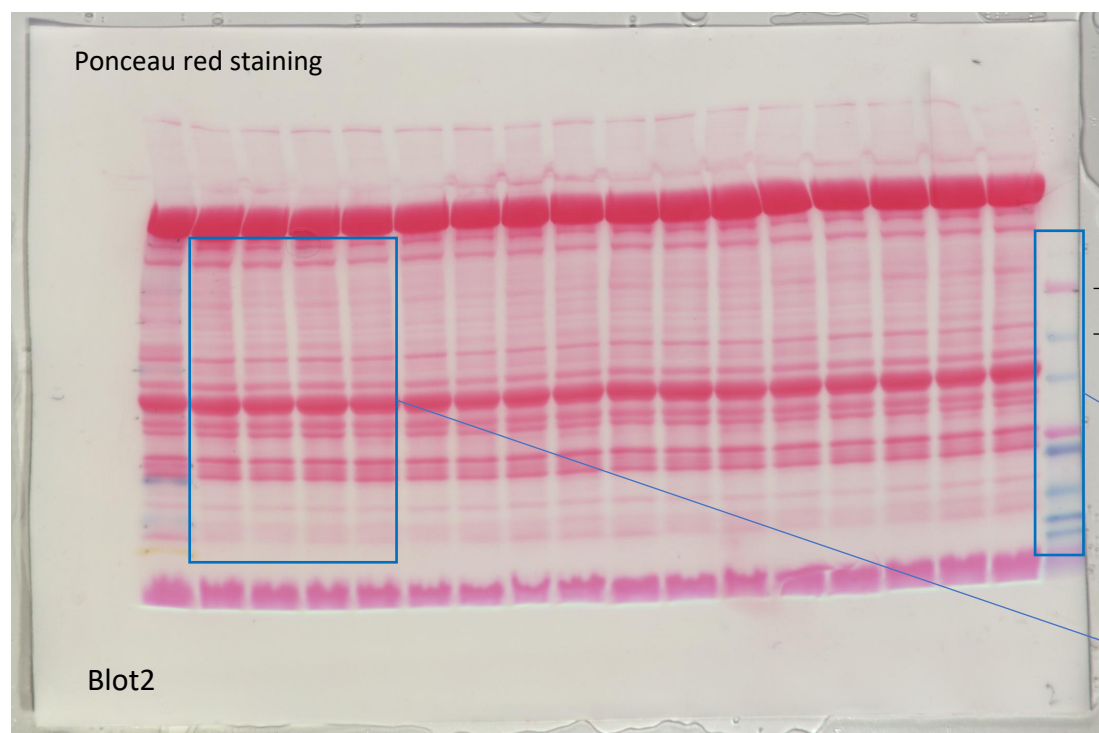
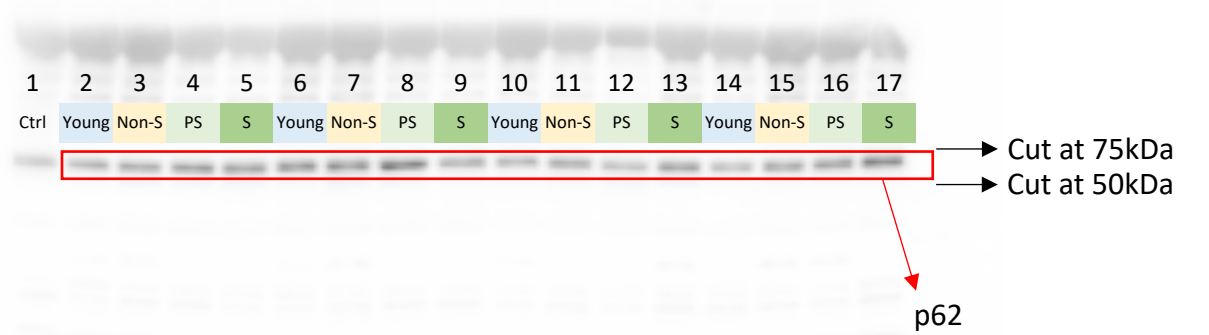
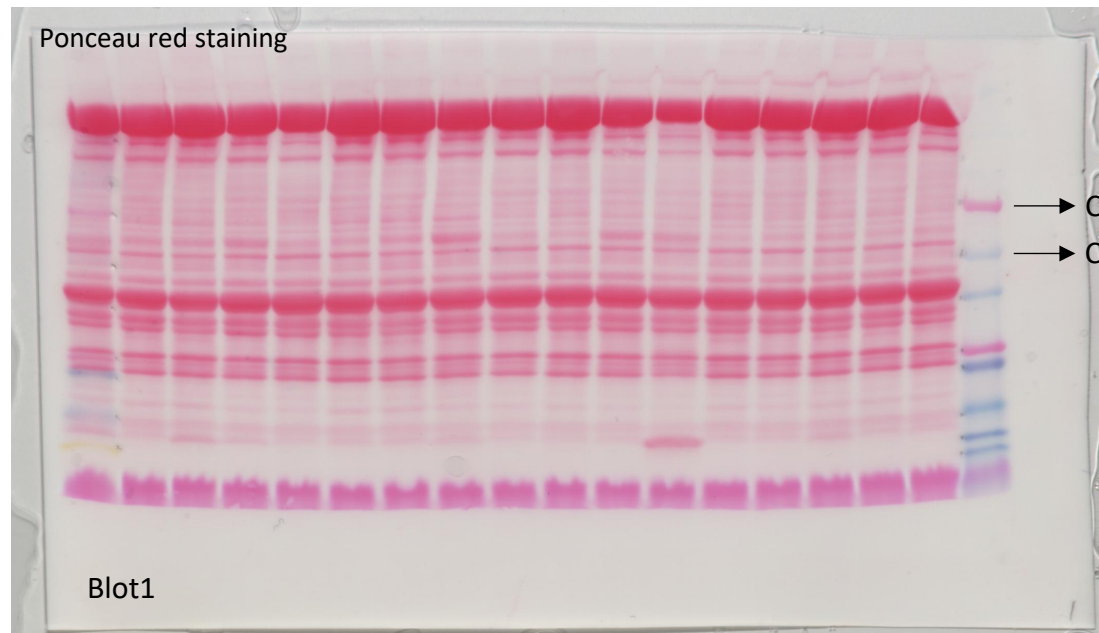


Representative blots

Used for data analysis

Blots are shown in Supplemental Fig. 3J

Full unedited blots for Supplemental Fig.3J p62 in females

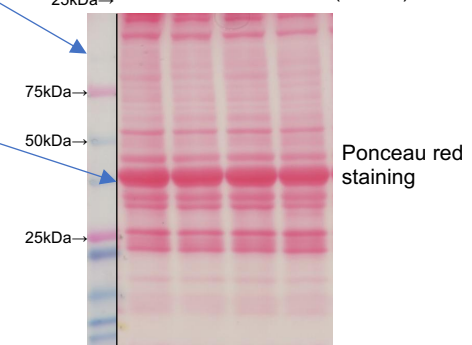
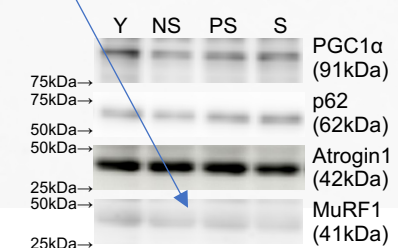
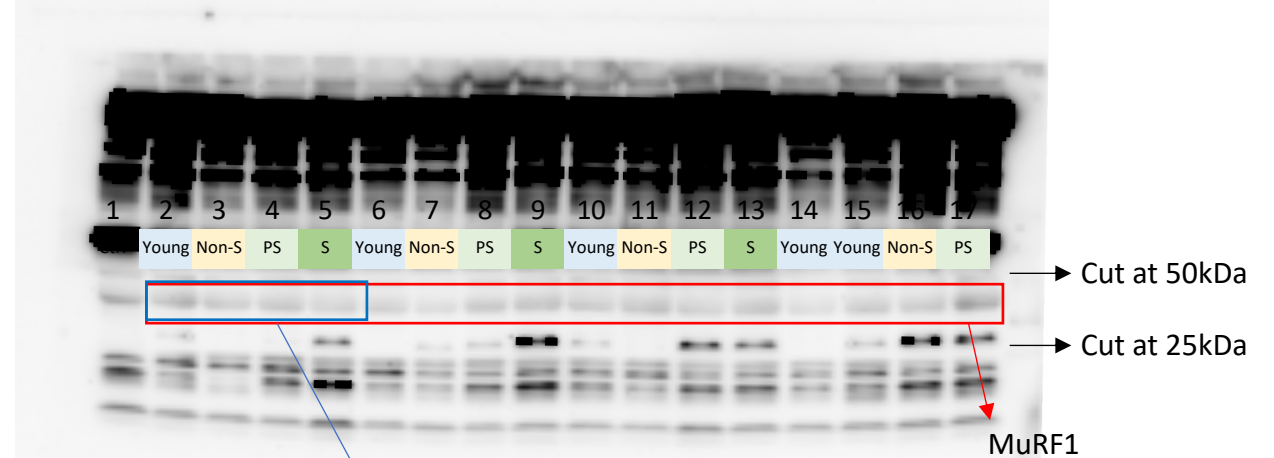
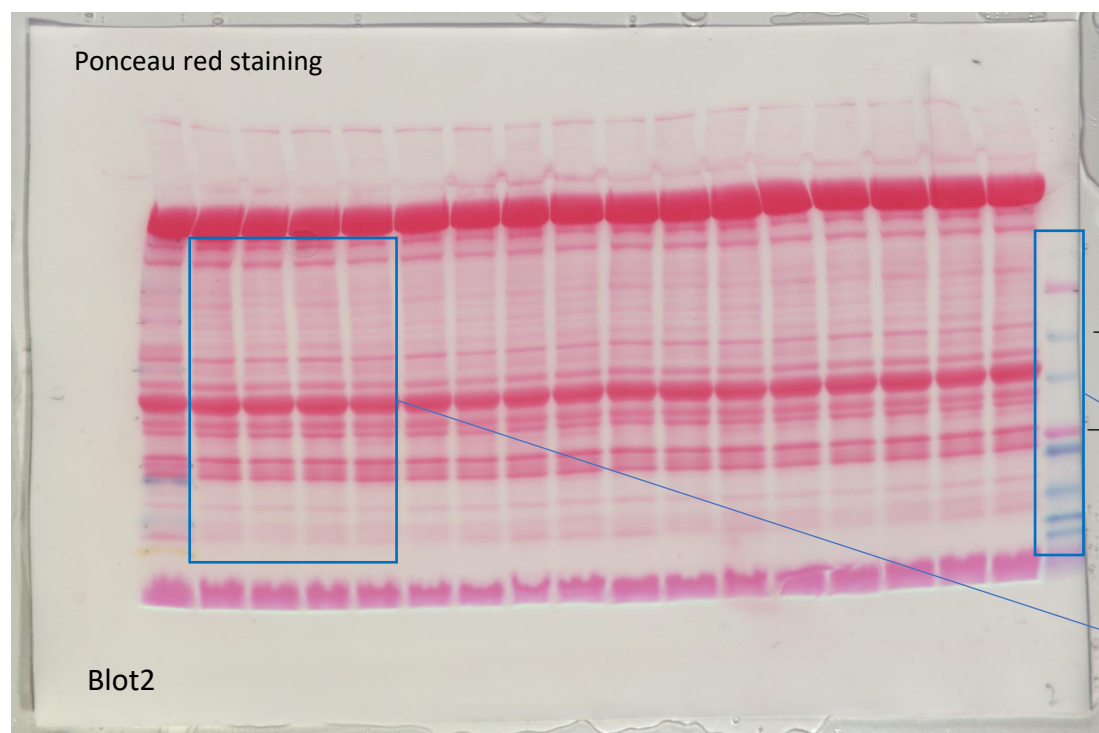
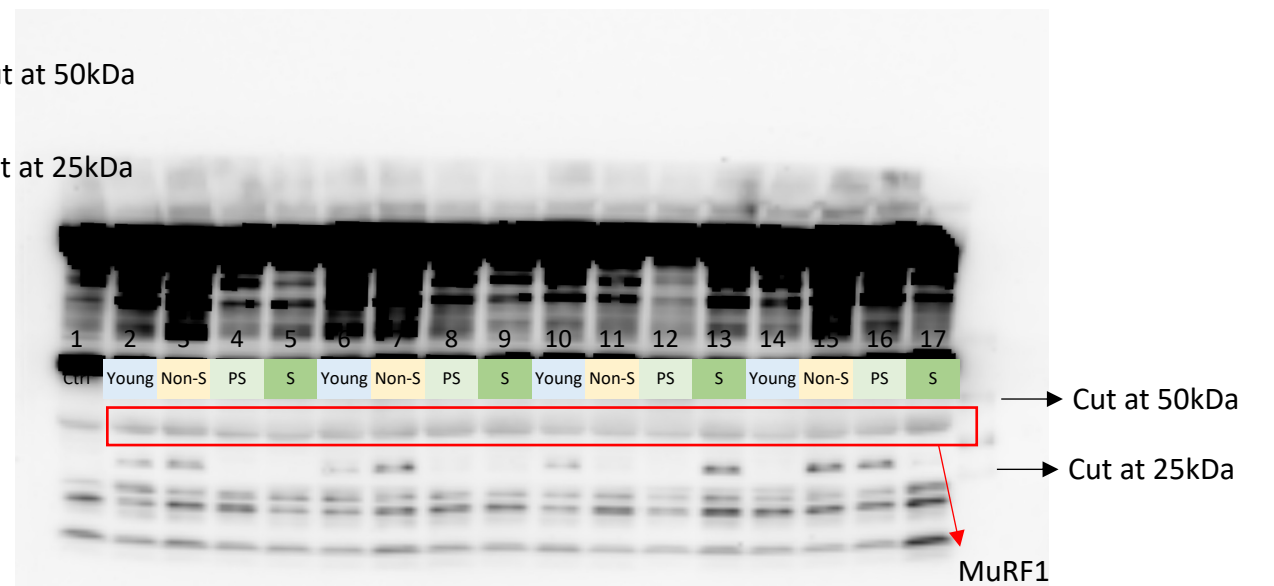
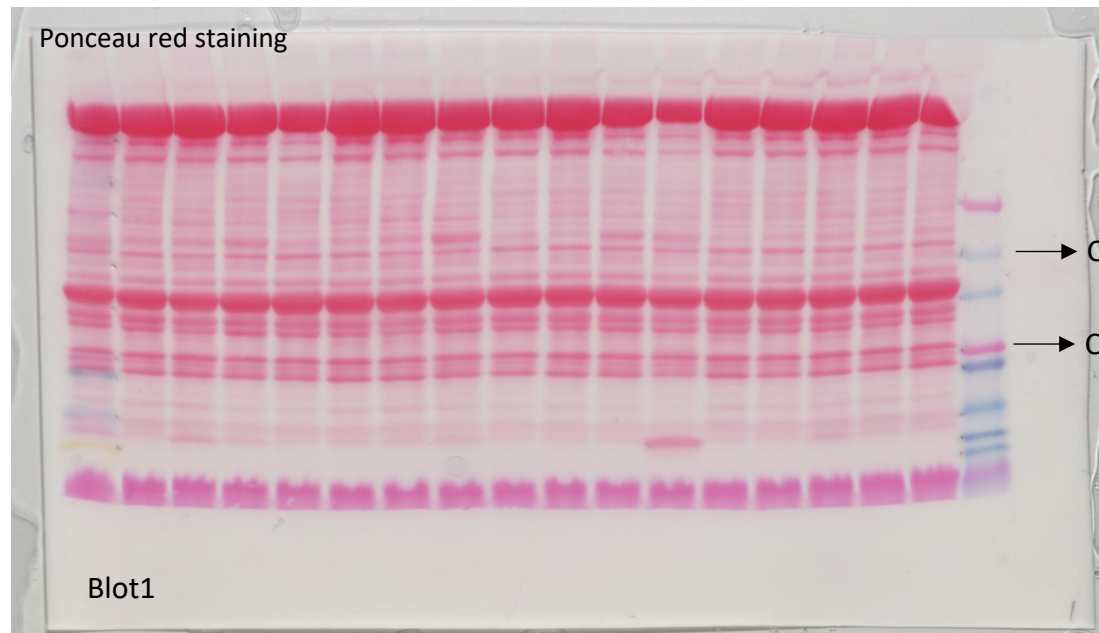


Representative blots

Used for data analysis

Blots are shown in Supplemental Fig. 3J

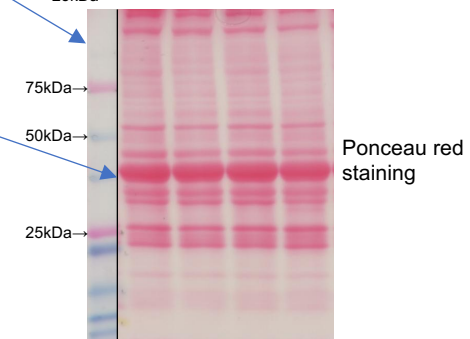
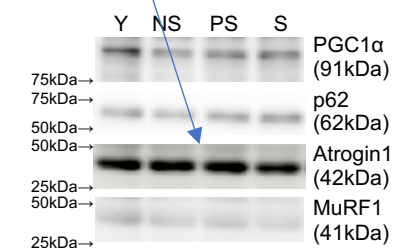
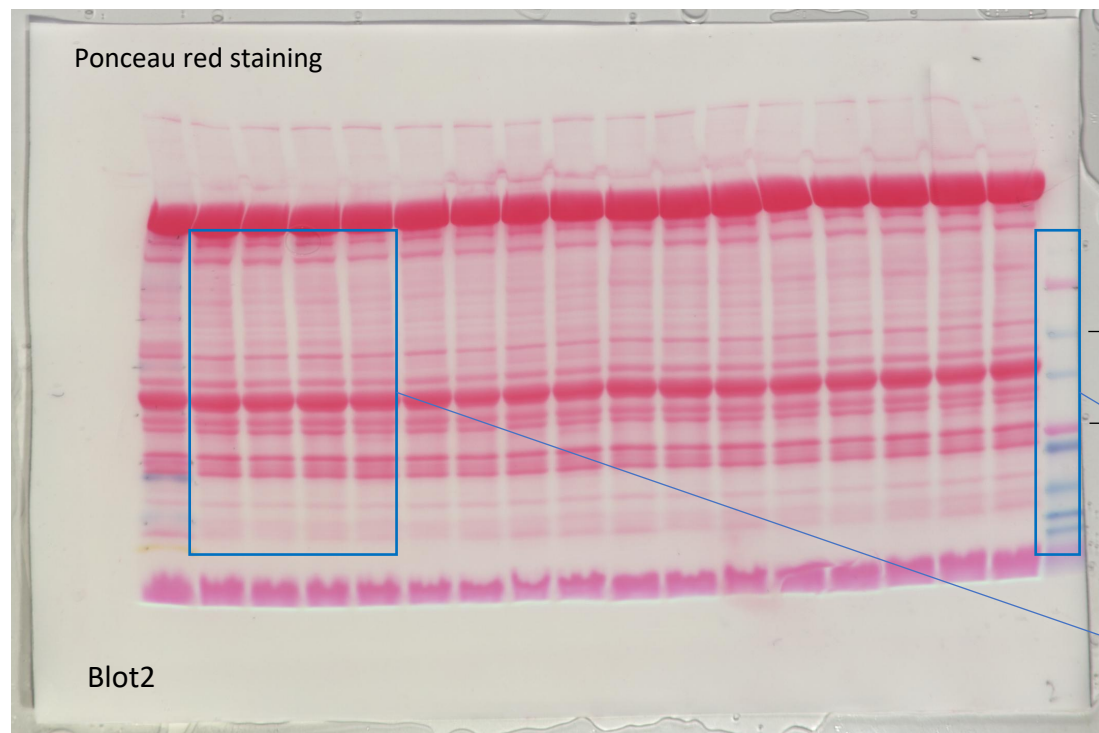
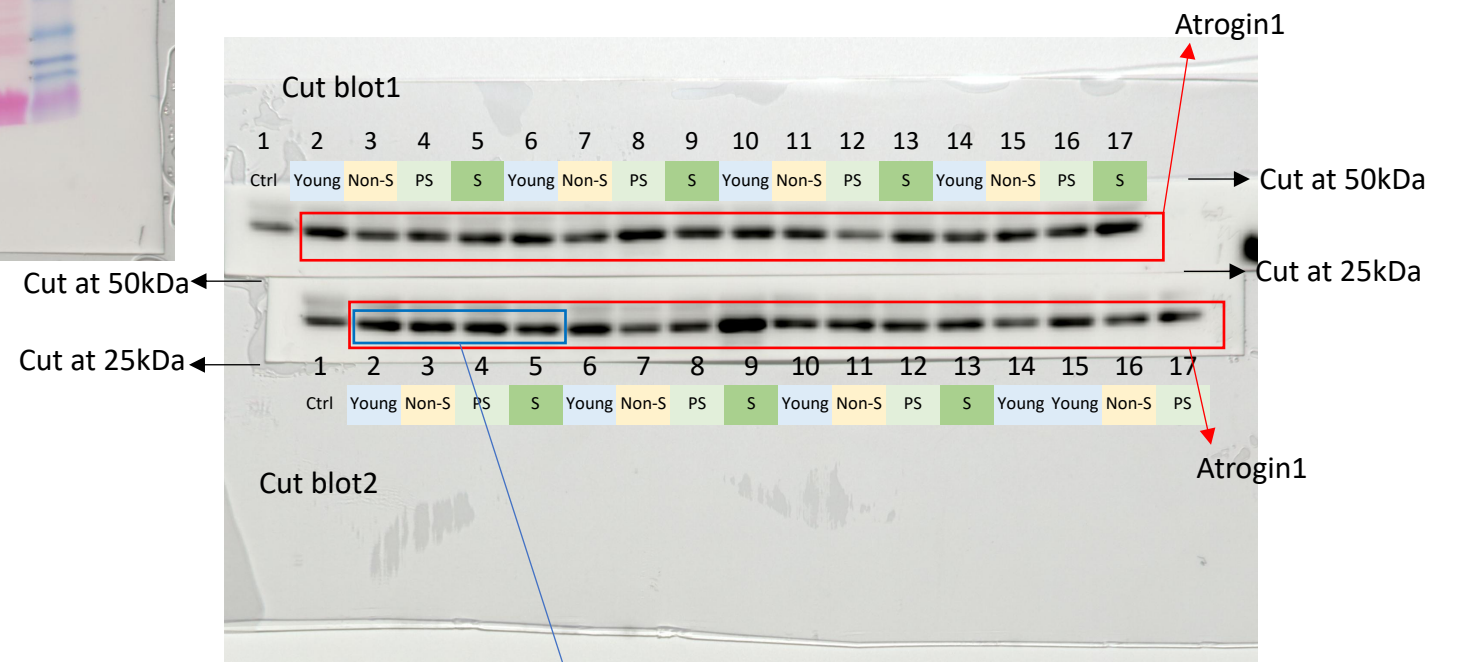
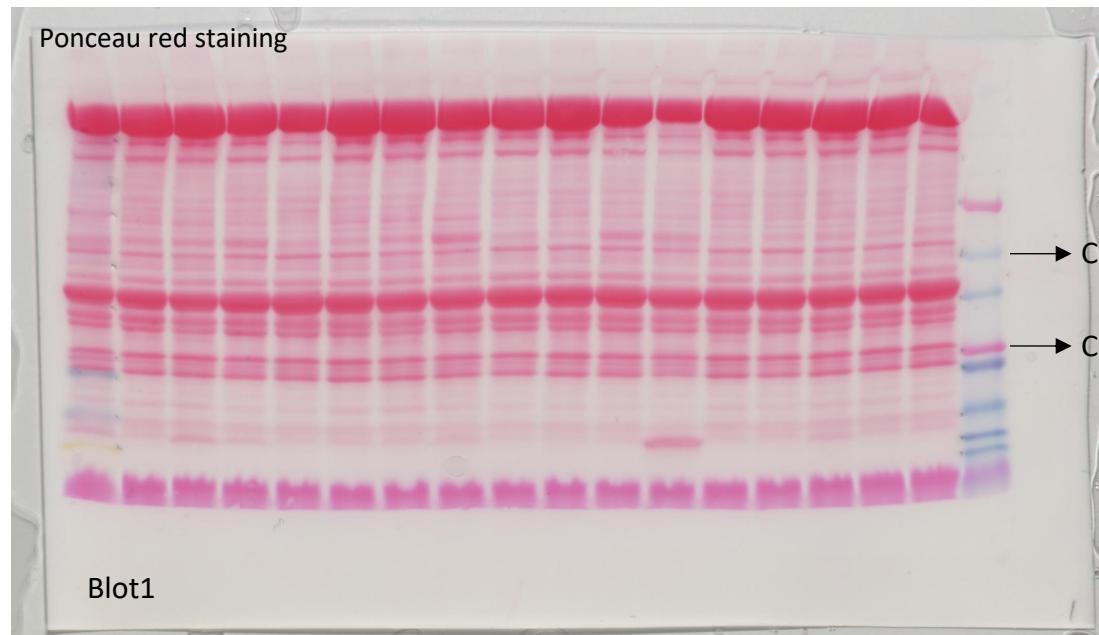
**Full unedited blots for Supplemental Fig.3J
MuRF1 in females**



- Representative blots
- Used for data analysis

Blots are shown in Supplemental Fig. 3J

Full unedited blots for Supplemental Fig.3J
Atrogin1 in females
(Stripped and reprobbed after MuRF1)



Representative blots

Used for data analysis

Blots are shown in Supplemental Fig. 3J