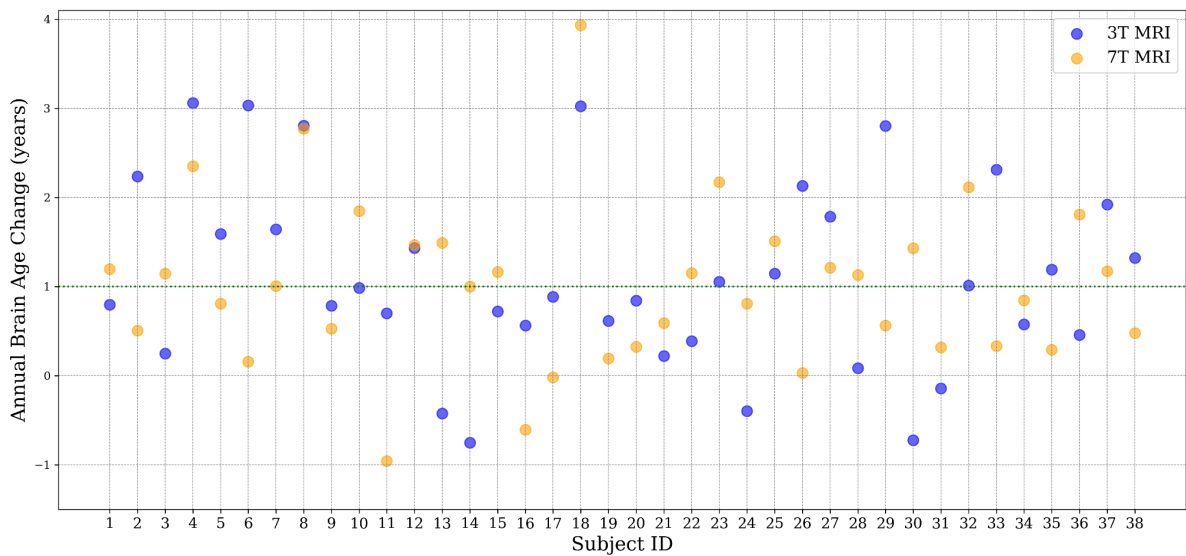


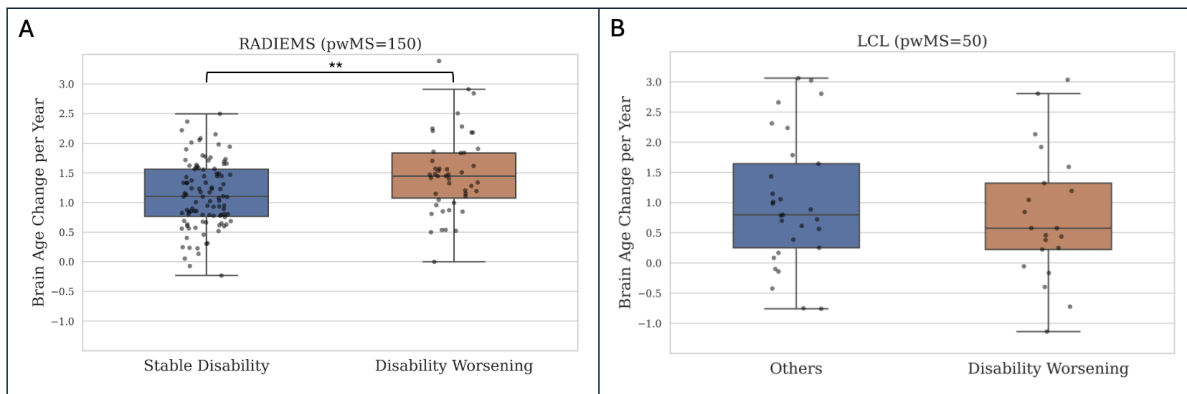
Supplementary Material

MS Cohort	Time since diagnosis (years)	Time between MRI sessions (years)	BA Change per year (years)
RADIEMS	2.23 ± 1.46	3.21 ± 0.40	1.23 ± 0.62
LCL	14.22 ± 10.86	2.18 ± 0.51	0.90 ± 1.06

Supplementary Table 1. Brain age increases more rapidly at the early stages of multiple sclerosis.



Supplementary Figure 1. The annual change in brain age does not significantly differ when comparing 3T and 7T MRI brain age ($p=0.6$). The plot shows a comparison of 38 pwMS from the LCL cohort imaged at both 3T and 7T.



Supplementary Figure 2. The annual brain age change is greater for subjects with disability worsening compared to stable ones in RADIEMS, whereas no differences are observed in LCL. Significance level: ** $p < 0.01$.