

# Supplementary information

## TMPRSS2 is a functional receptor for human coronavirus HKU1

Nell Saunders<sup>1</sup>, Ignacio Fernandez<sup>2</sup>, Cyril Planchais<sup>3</sup>, Vincent Michel<sup>4</sup>, Maaran Michael Rajah<sup>1</sup>, Eduard Baquero Salazar<sup>5</sup>, Françoise Porrot<sup>1</sup>, Florence Guivel-Benhassine<sup>1</sup>, Jeanne Postal<sup>1</sup>, Catherine Blanc<sup>6</sup>, Gaëlle Chauveau-Le Fric<sup>7</sup>, Augustin Martin<sup>1</sup>, Ludivine Grzelak<sup>1</sup>, Maya Oktavia Rischa<sup>2</sup>, Annalisa Meola<sup>2</sup>, Olivia Ahouzi<sup>2</sup>, Hunter Hoover-Watson<sup>1</sup>, Matthieu Prot<sup>8</sup>, Deborah Delaune<sup>8,13</sup>, Marion Cornelissen<sup>9,10</sup>, Martin Deijis<sup>10,11</sup>, Hugo Mouquet<sup>3</sup>, Etienne Simon-Lorière<sup>8,14</sup>, Lia van der Hoek<sup>10,11</sup>, Pierre Lafaye<sup>7</sup>, Felix Rey<sup>2</sup>, Julian Buchrieser<sup>1,#,\*</sup> and Olivier Schwartz<sup>1,12,#,\*</sup>

<sup>1</sup>Virus & Immunity Unit, Institut Pasteur, Université de Paris Cité, CNRS UMR 3569, Paris, France

<sup>2</sup>Structural Virology Unit, Institut Pasteur, Université de Paris Cité, CNRS UMR 3569, Paris, France

<sup>3</sup>Humoral Immunology Unit, Institut Pasteur, Université de Paris Cité, INSERM U1222, Paris, France

<sup>4</sup>Pathogenesis of Vascular Infections Unit, Institut Pasteur, INSERM, Paris, France.

<sup>5</sup>Nanoimaging core, Institut Pasteur, Université de Paris Cité, INSERM U1222, Paris, France

<sup>6</sup>Pasteur-TheraVectys Joint Lab, Institut Pasteur, Université de Paris Cité, Paris, France

<sup>7</sup>Antibody Engineering Platform, C2RT, Institut Pasteur, Université de Paris Cité, CNRS UMR 3528, Paris, France.

<sup>8</sup>G5 Evolutionary Genomics of RNA Viruses, Institut Pasteur, Paris, France.

<sup>9</sup>Department of Medical Microbiology and Infection Prevention, Amsterdam UMC, Molecular Diagnostic Unit, University of Amsterdam, 1105 AZ Amsterdam, Netherlands.

<sup>10</sup>Amsterdam Institute for Infection and Immunity, Amsterdam, The Netherlands

<sup>11</sup>Department of Medical Microbiology and Infection Prevention, Amsterdam UMC, Laboratory of Experimental Virology, University of Amsterdam, 1105 AZ Amsterdam, Netherlands.

<sup>12</sup>Vaccine Research Institute, Creteil, France

<sup>13</sup>Institut de Recherche Biomédicale des Armées, Brétigny-sur-Orge, France

<sup>14</sup>National Reference Center for viruses of respiratory infections, Institut Pasteur, Paris, France.

#Co-last authors

\*Corresponding authors

## Table of content

**Supplementary movie 1.** Time lapse microscopy of TMPRSS2-scarlet-I (red) and HKU1A S-NeonGreen (green) expressing cells. 293T cells were transfected either with TMPRSS2-scarlet-I or HKU1A S-NeonGreen. At 24 h post transfection, the cells were mixed and imaged every 150 seconds for 2.5 h at 37°C, 5% CO<sub>2</sub>. Two representative movies are shown.

**Supplementary movie 2.** Time lapse microscopy of TMPRSS2-scarlet-I (red) and HKU1A S-NeonGreen (green) expressing cells. 293T cells were transfected either with TMPRSS2-scarlet-I or HKU1A S-NeonGreen. At 24 h post transfection, the cells were mixed and imaged every 150 seconds for 2.5 h at 37°C, 5% CO<sub>2</sub>. Two representative movies are shown.

**Supplementary information 1. a,b. c. d.** Full western blot membranes (a,b. Fig. 2, c,d. Extended Data Fig. 4) ..... **3**

**Supplementary information 2. a. b. c.** Quality control gels of the purified proteins. **d.** Expected molecular weights and glycosylation sites.....**4**

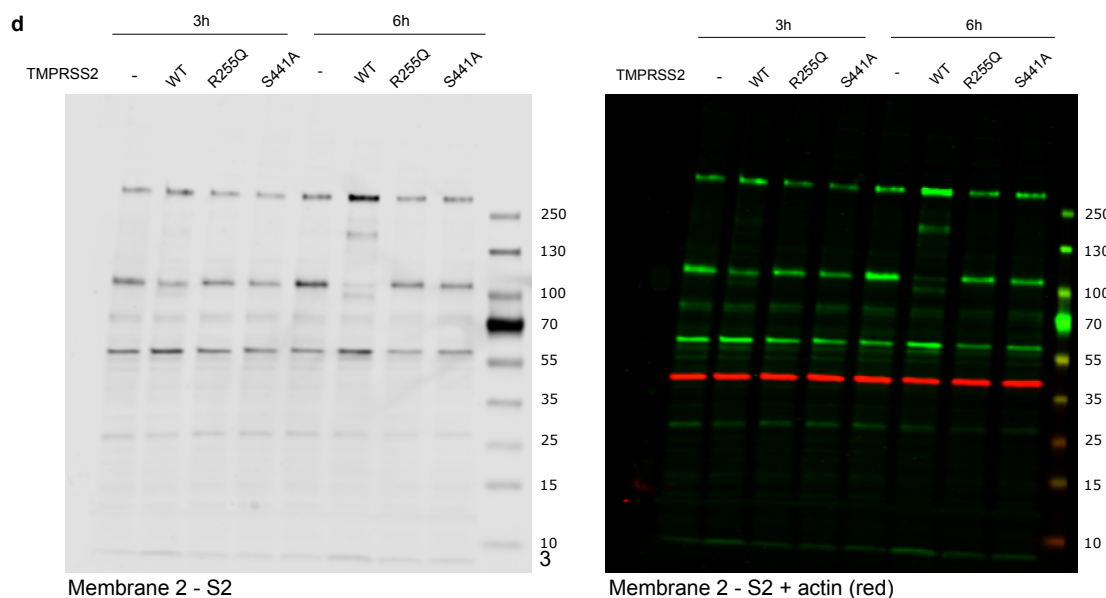
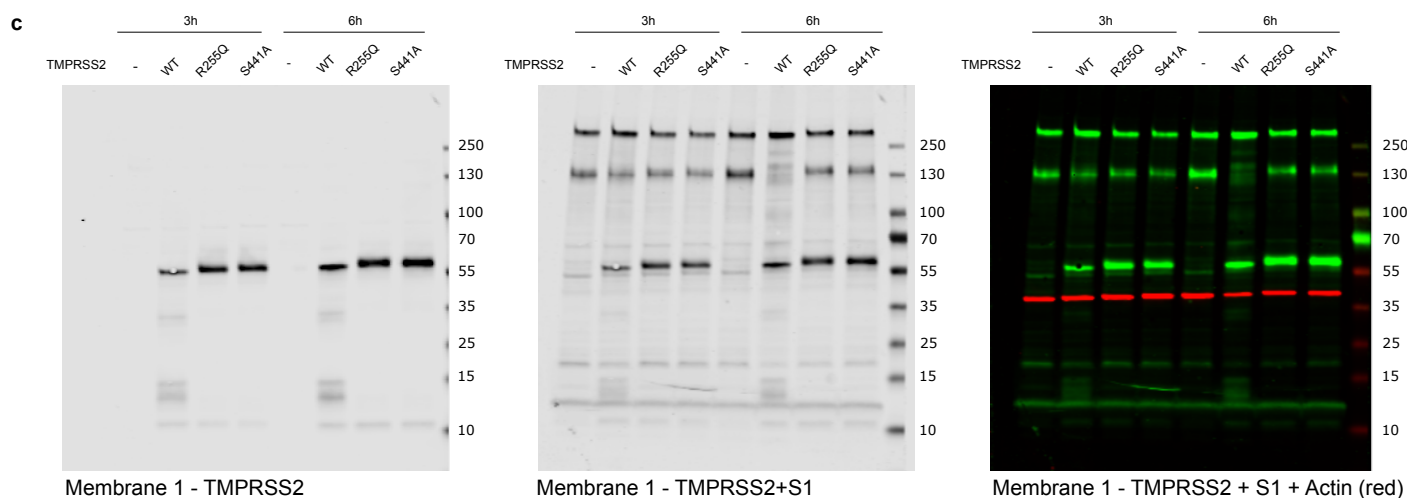
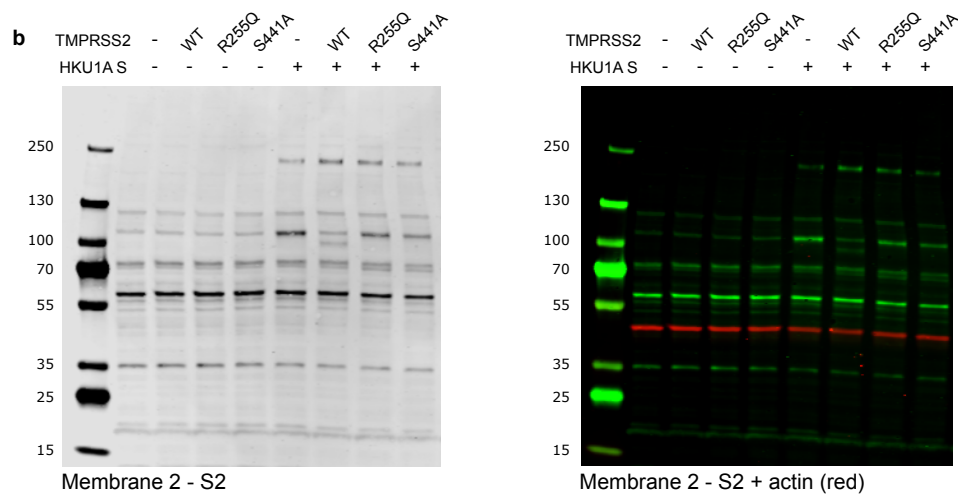
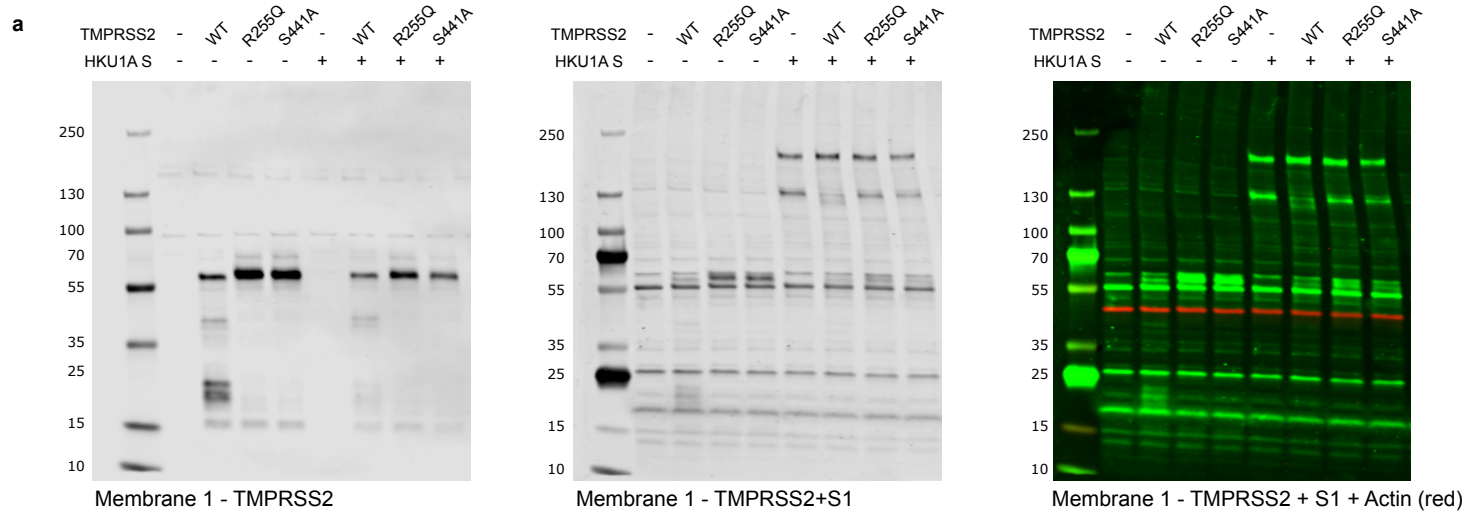
**Supplementary information 3.** Gating strategy.....**5**

**Supplementary information 4.** Sequence of the VHH.....**6**

**Supplementary information 5. a. b. c. d.** Complete BLI data used for fitting and determination of the affinity of TMPRSS2 for HKU1 RBD.....**7**

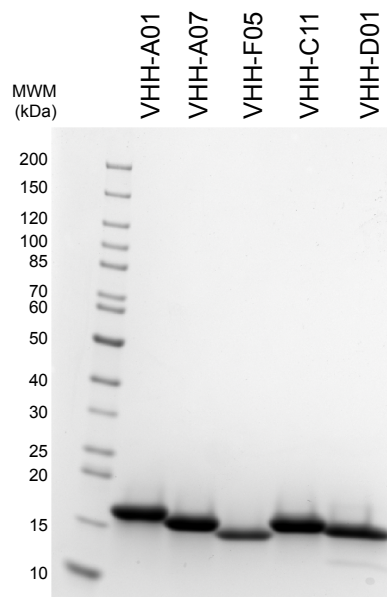
**Supplementary information 6.** K<sub>d</sub>, 95% confidence interval, R<sup>2</sup> of the fit, and range of the concentration of TMPRSS2.....**8**

# Supplementary information 1

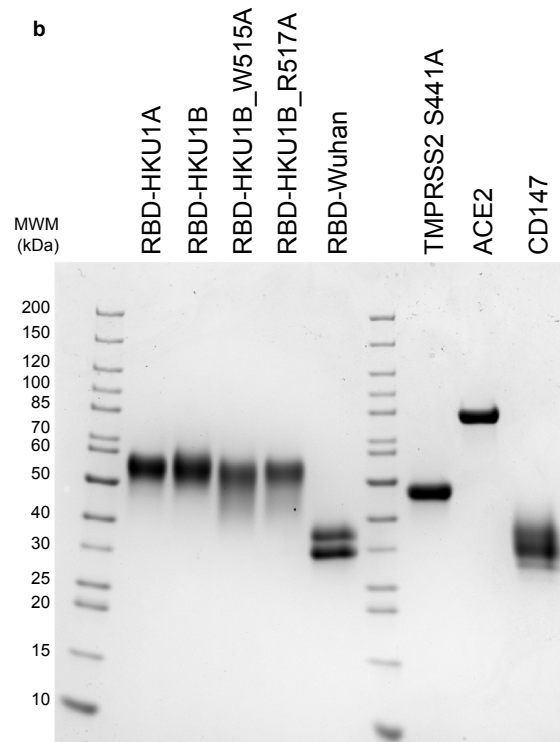


# Supplementary information 2

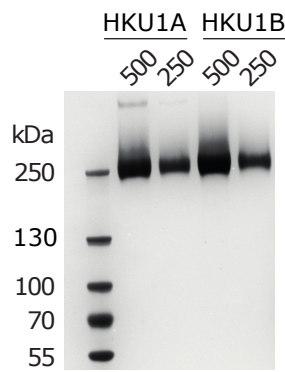
**a**



**b**



**c**

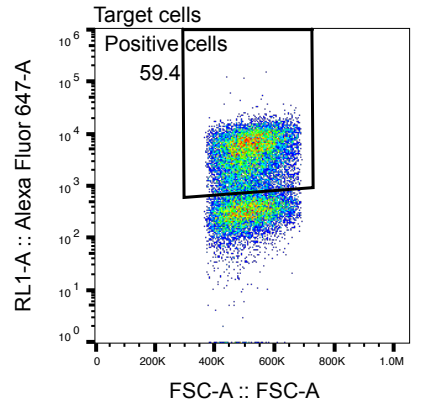
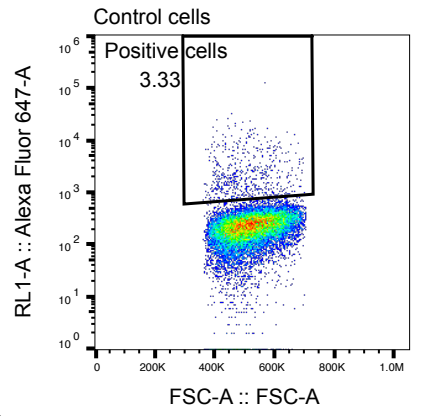
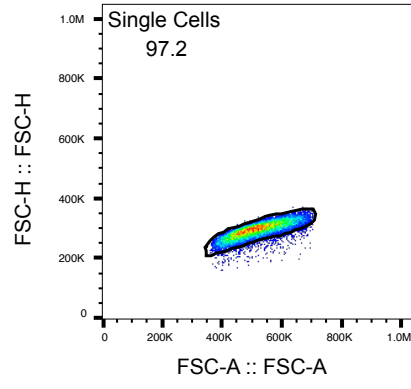
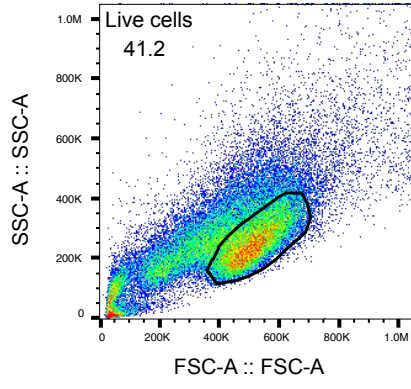


**d**

Protein	Expected MW (kDa)	Number of glycosylation sites
VHH-A01	15.3	-
VHH-A07	15.5	-
VHH-F05	14.7	-
VHH-C11	15.5	-
VHH-D01	15.2	-
RBD-HKU1A	37.1	5
RBD-HKU1B	36.7	5
RBD-HKU1B-W515A	36.7	5
RBD-HKU1B-R517A	36.7	5
RBD-SARS-CoV-2	27.3	1
TMPRSS2 S441A	46.9	2
ACE2	70.0	6
CD147	22.5	3
S-HKU1A	148.2	28
S-HKU1B	145.2	30



Supplementary information 3



## VHH Sequences

### Monomeric VHH sequences :

```

>A01
QVQLVESGGGLVQPGGSLRLSCVVSSGFSLDYYAIGWFRQAPGKEREGVSCIGSSGDKTNYADSVKGRFTISRDNAK
NTVYLQMNSLKPEDTAVYYCAAESALYSDCTEEQNPMLYDYWGQGTQVTVSS
>A07
QVQLVESGGGLVQPGGSLRLSCTSSSGSPLEHYDIHWFRQAPGREREGVSSITTSGGHTNYADSVKGRFTISRDNAKN
VVYLQMNSLKPEDTAVYYCAGRVGGRRNWIVPLDGYDNAYWGQGTQVTVSS
>C11
QVQLVESGGGLVQPGGSLRLSCAASGFTLDYYDIYWFRQAPGKEREGVSSITTSGGRTNYADSVKGRFTISRDNAK
NTVYLQMNSLKPEDTAVYYCAAKVGRRNWIAPLNGYENALWGKGTLTVSS
>D01
EVQLVESGGGLVQPGGPLRLSCASSGSTLEHYDIGWFRQVPGGLREGVSSITASGGRTNYADSVKGRFTISRDNGKN
AVYLQMNSLKPEDTAVYYCAGKIGRRNWVAPLDGFENAYWGQGTQVTVSS
>F05
EVQLVESGGGLVQPGGSLRLSCAASGFTLDYYAIGWFRQAPGKEREGVSCISSSGDSIKYVDSVKGRFTISRDNAKN
TVYLQMNSLKPEDTAVYQCAADALGSGCLTGNYDYWGQGTRVTVSS
CDR1-CDR2-CDR3

```

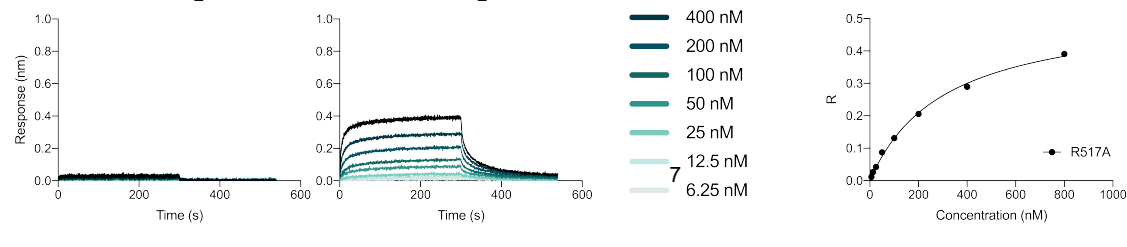
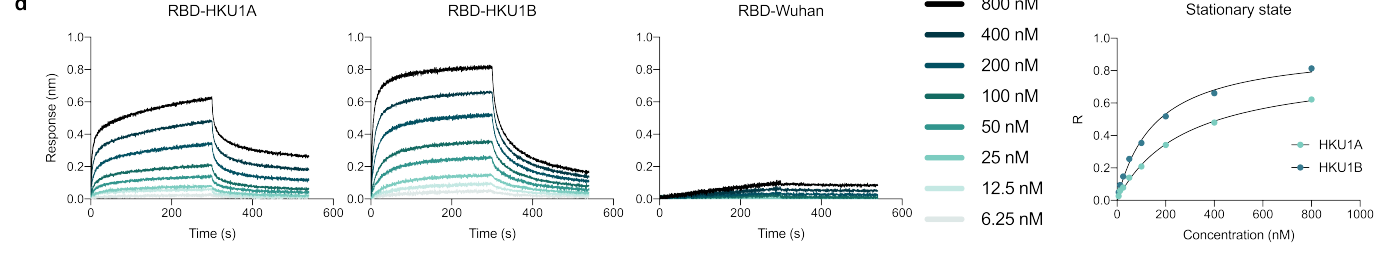
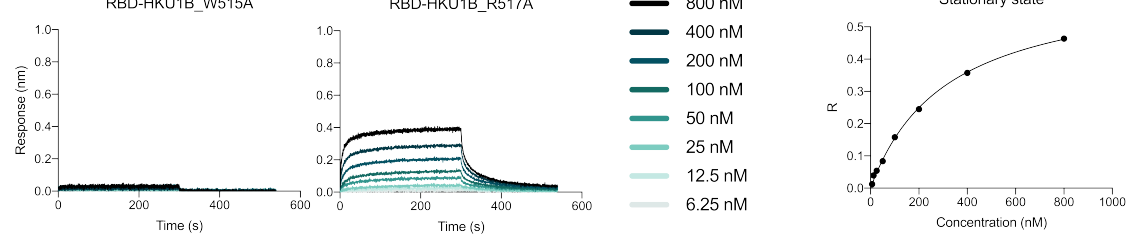
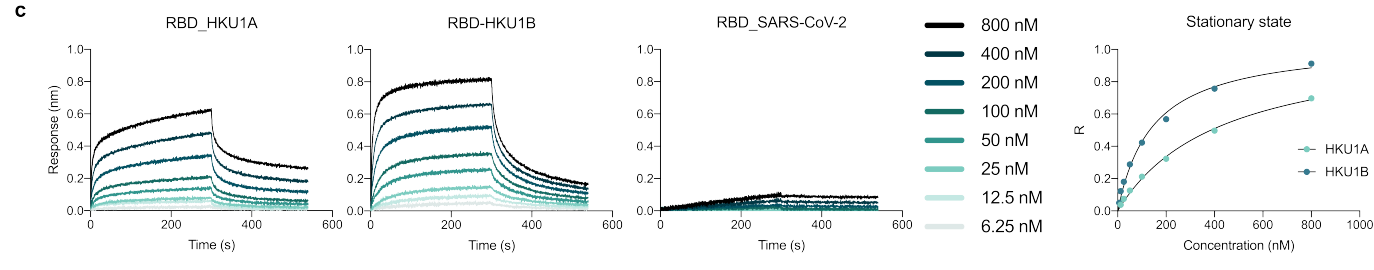
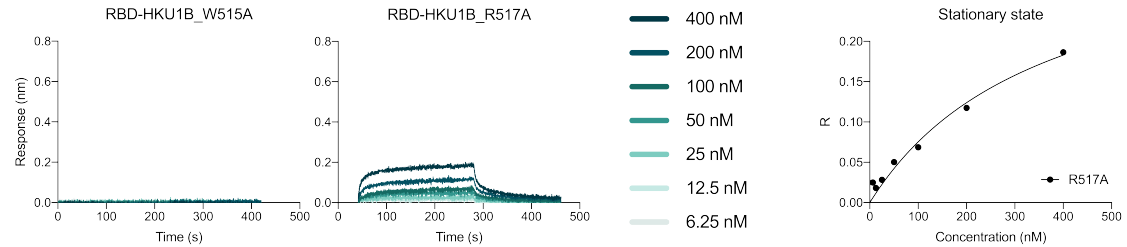
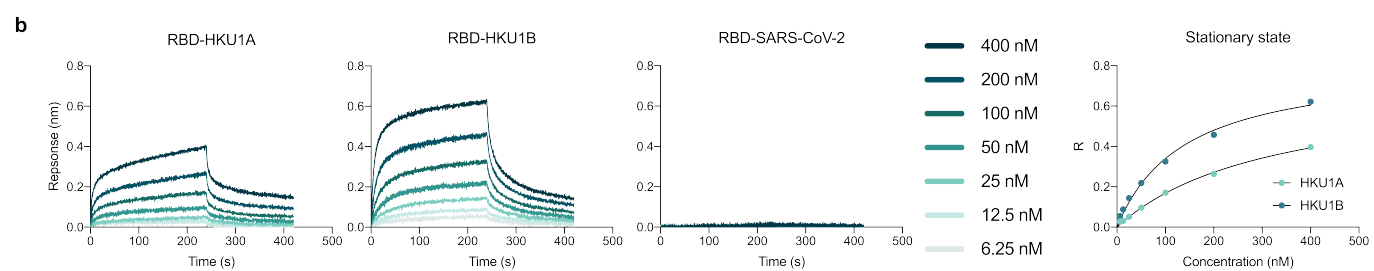
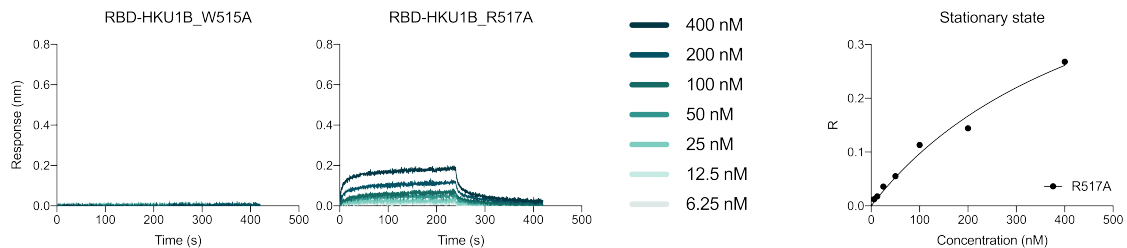
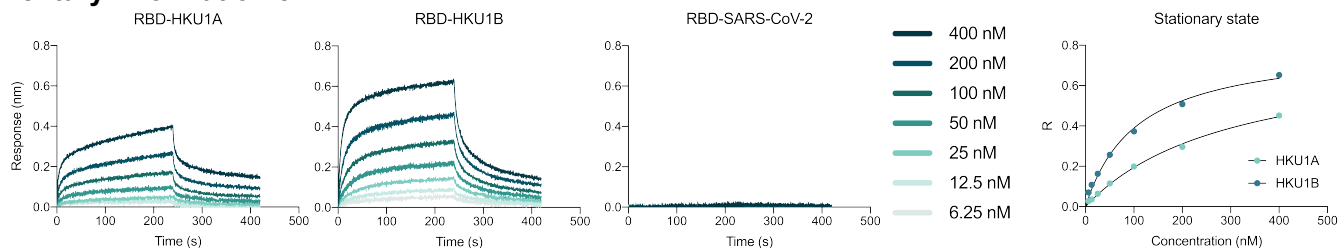
### VHH-Fc sequences :

```

>TMPR-A1-Fc-humain (VHH-A01-Fc)
QVQLVESGGGLVQPGGSLRLSCVVSSGFSLDYYAIGWFRQAPGKEREGVSCIGSSGDKTNYADSVKGRFTISRDNAK
NTVYLQMNSLKPEDTAVYYCAAESALYSDCTEEQNPMLYDYWGQGTRVTVSSSEPKTPKPQPAAARSDKTHCPPCP
APELLGGPSVFLFPPKPDTLMISRTPEVTCVVVDVSHEDPEVKFNWYVDGVEVHNATKPREEQYNSTYRVVSVLVLHQ
DWLNGKEYKCKVSNKALPAPIEKTISKAKGQPREQVYTLPPSREEMTKNQVSLTCLVKGFYPSDIAVEWESNGQPENNYK
TTPPVLDSDGSFFLYSKLTVDKSRWQQGNVFSCVMHEALHNHYTQKSLSLSPGK

```

# Supplementary information 5



**Supplementary table 1**

<b>Replicate</b>	<b>RBD</b>	<b>Kd</b>	<b>95% CI</b>	<b>R<sup>2</sup></b>	<b>Range tested</b>
1	HKU1A	304.5	226.6 to 433.3	0.9967	6.25-400 nM
2	HKU1A	232.1	245.1 to 440	0.9975	6.25-400 nM
3	HKU1A	430.1	328.6 to 574.4	0.9965	6.25-800 nM
4	HKU1A	279.6	221.1 to 356.9	0.9964	6.25-800 nM
1	HKU1B	106.9	75.9 to 152.6	0.9922	6.25-400 nM
2	HKU1B	140.6	94.9 to 213.5	0.9913	6.25-400 nM
3	HKU1B	144.2	107.6 to 194.2	0.9928	6.25-800 nM
4	HKU1B	155.1	119.8 to 201.5	0.9945	6.25-800 nM
1	HKU1B_R517A	515.1	211.9 to 3327	0.9812	6.25-400 nM
2	HKU1B_R517A	363.8	150.8 to 1523	0.9735	6.25-400 nM
3	HKU1B_R517A	316.9	267.6 to 377.3	0.9983	6.25-800 nM
4	HKU1B_R517A	308.0	246.7 to 388.0	0.9971	6.25-800 nM