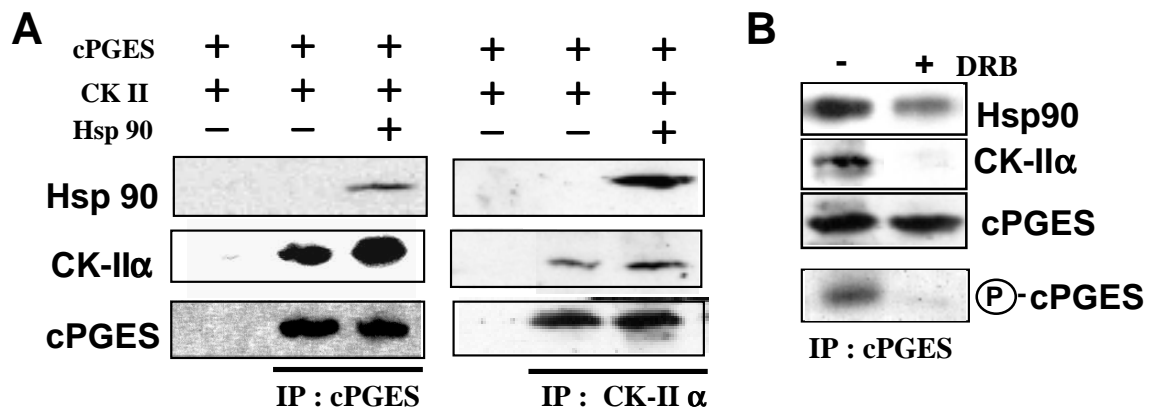


**Fig. S1**

**Complex formation between cPGES, CK-II and Hsp90.** *A*, the reaction mixtures were immunoprecipitated with anti-cPGES antibody and were then subjected to SDS-PAGE/immunoblotting with anti-Hsp90, -CK-II $\alpha$  and -cPGES antibodies. Replicate samples were immunoprecipitated with anti-CK-II $\alpha$  antibody and were then subjected to SDS-PAGE/immunoblotting with the three antibodies. *B*, the mixture of cPGES, CK-II and Hsp90 was incubated with (+) or without (-) DRB. Then the complex was precipitated with anti-cPGES antibody and immunoblotted with respective antibodies. Aliquots were taken for autoradiography to determine the incorporation of  $^{32}\text{P}$  into cPGES.



**Fig. S2**

**Determination of kinetic parameters of cPGES with or without CK-II and Hsp90.**

PGES activities of cPGES alone, cPGES plus CK-II $\alpha$ , and cPGES, CK-II $\alpha$  plus Hsp90 were measured toward various concentrations of PGH<sub>2</sub> (*Inset*), and the double reciprocal plot of the result is shown.

