

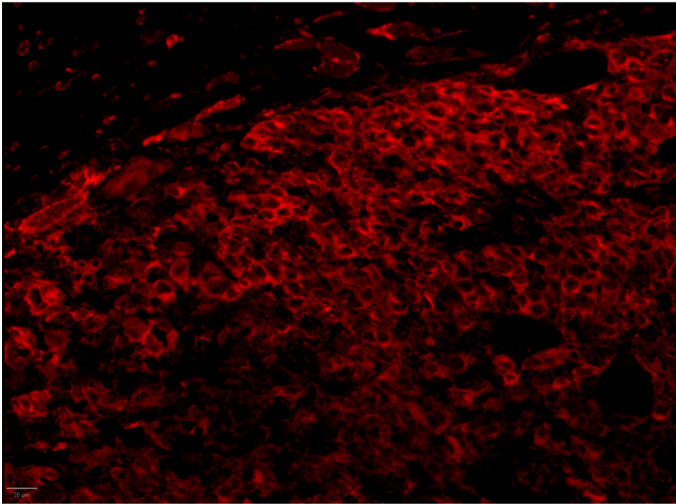
OMTN, Volume 35

Supplemental information

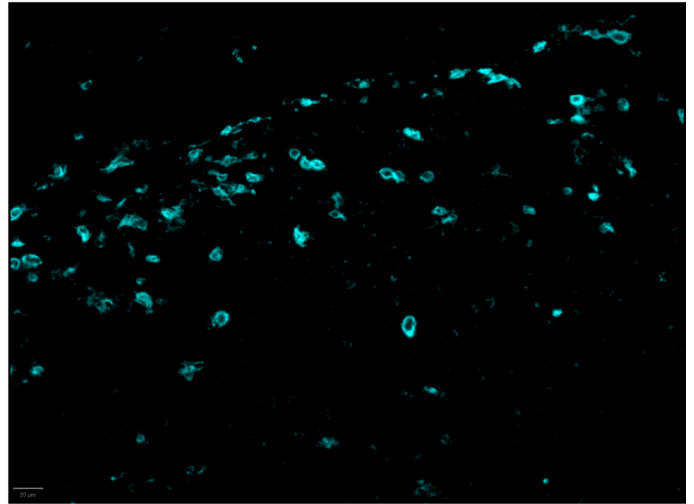
**IL-12 and PD-1 peptide combination gene
therapy for the treatment of melanoma**

Loree C. Heller, Guilan Shi, Amanda Sales Conniff, Julie Singh, Samantha Mannarino, Jody Synowiec, and Richard Heller

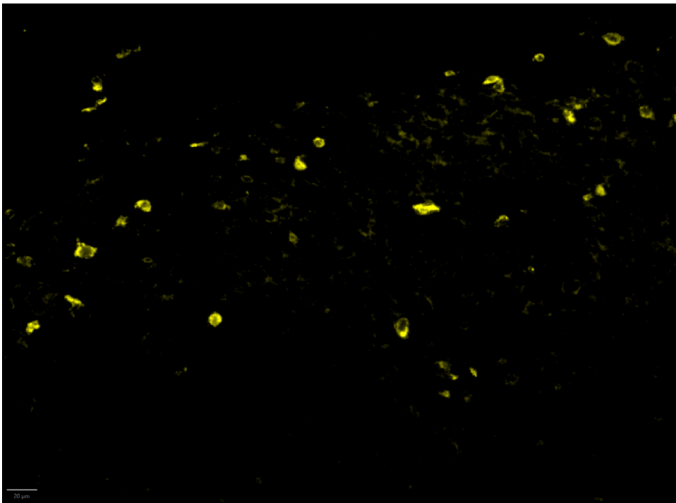
A. Melan-A



B. CD8a



C. PD-1



D. Composite

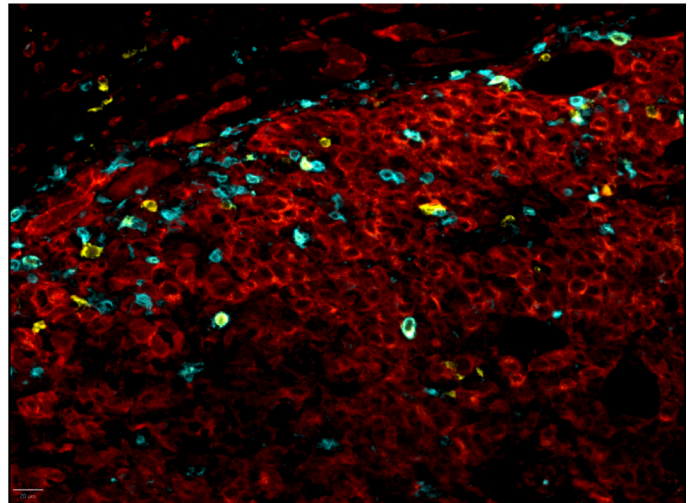
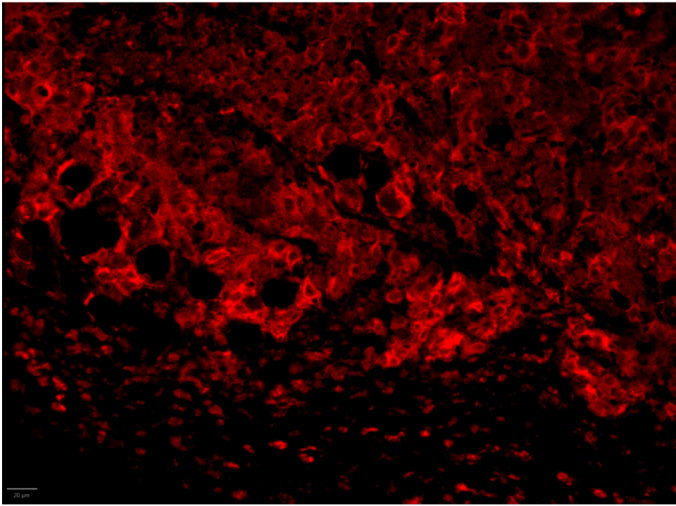
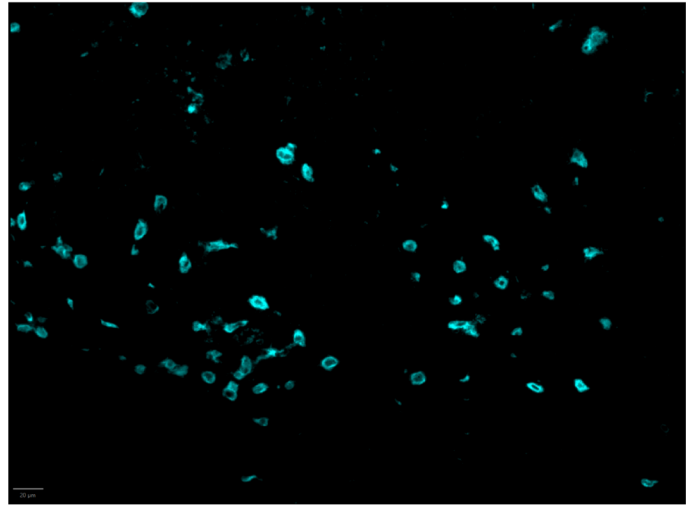


Figure S1A. Control tumor immunohistochemistry. Representative images. Images of individual fluorescent channels corresponding to IHC images shown in Figure 2A. For details, see Materials and Methods.

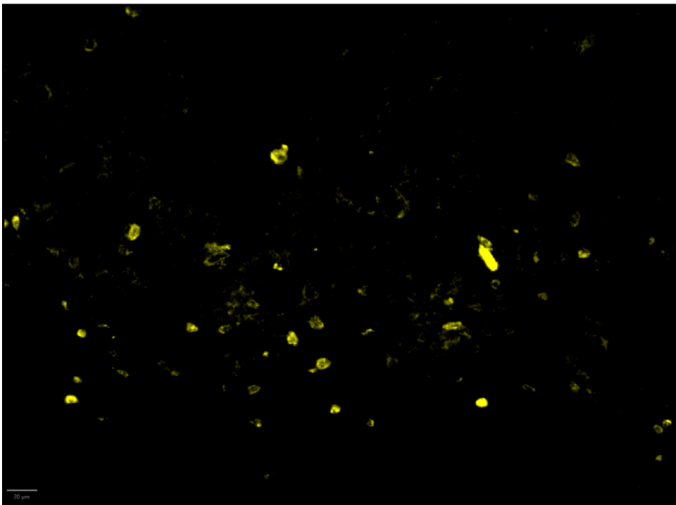
A. Melan-A



B. CD8a



C. PD-1



D. Composite

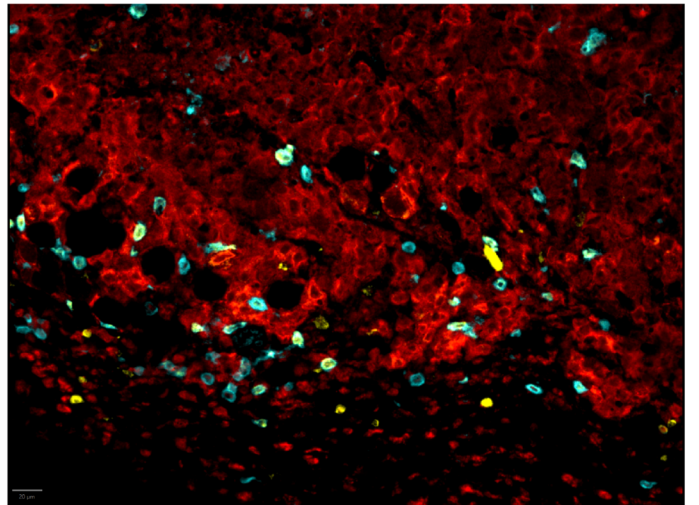
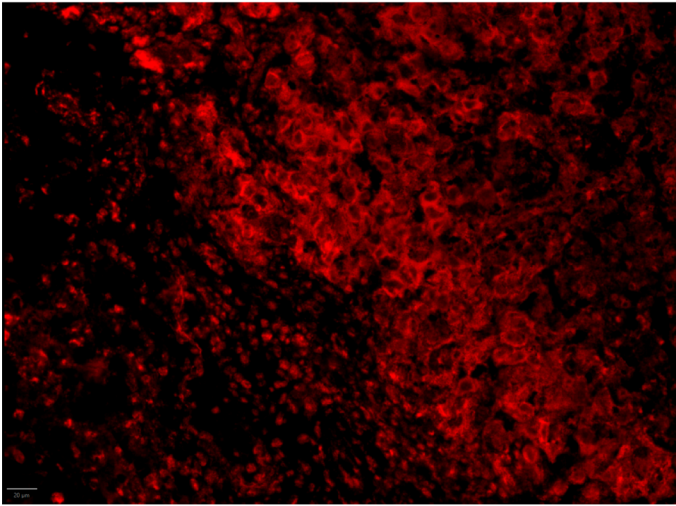
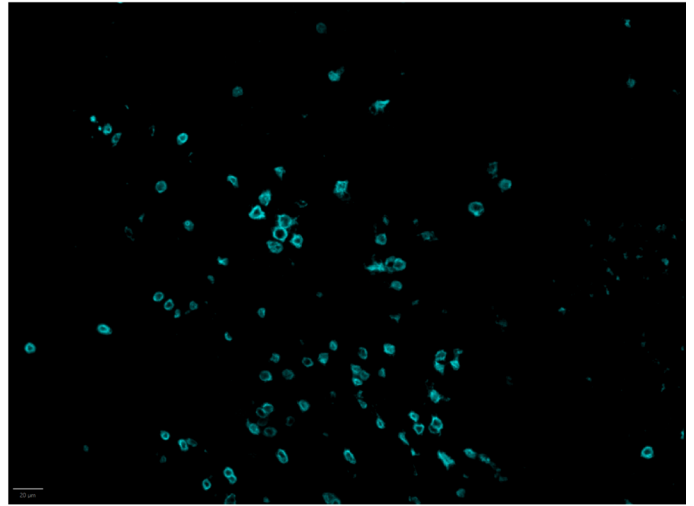


Figure S1B. pPD1N+EP tumor immunohistochemistry. Representative images. Images of individual fluorescent channels corresponding to IHC images shown in Figure 2B. For details, see Materials and Methods.

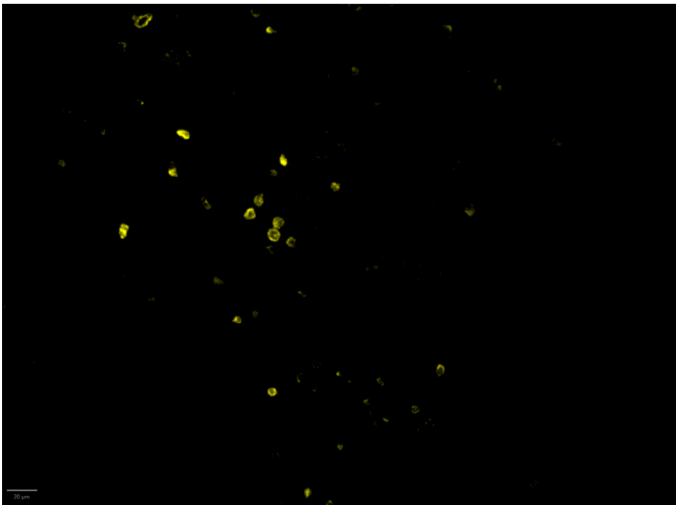
A. Melan-A



B. CD8a



C. PD-1



D. Composite

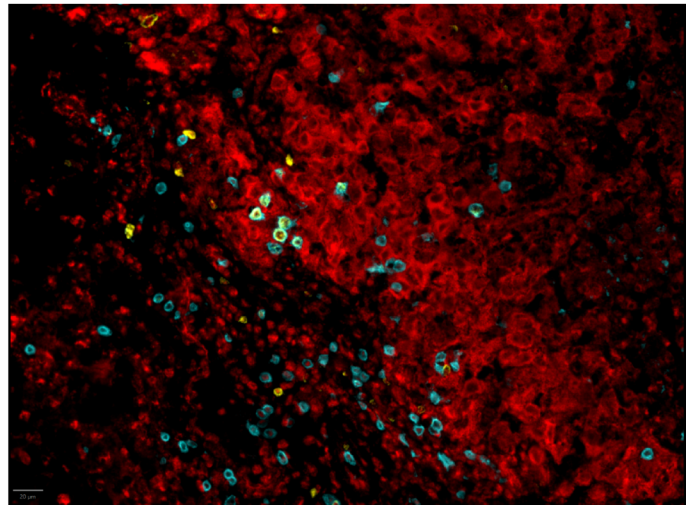
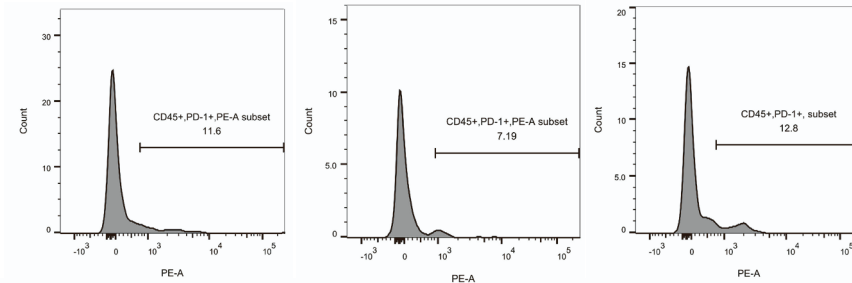


Figure S1C. pPD1P+EP tumor immunohistochemistry. Representative images. Images of individual fluorescent channels corresponding to IHC images shown in Figure 2C. For details, see Materials and Methods.

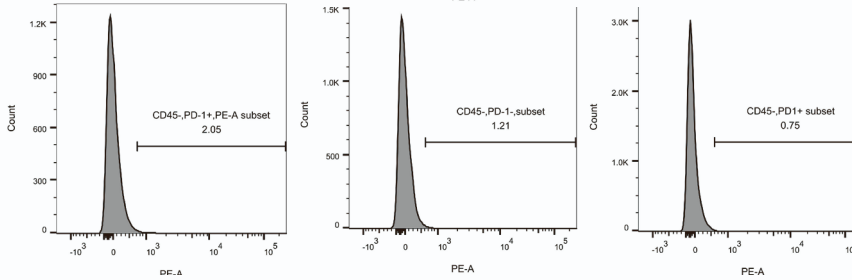
PD-1

Control

CD45+ (n=3)

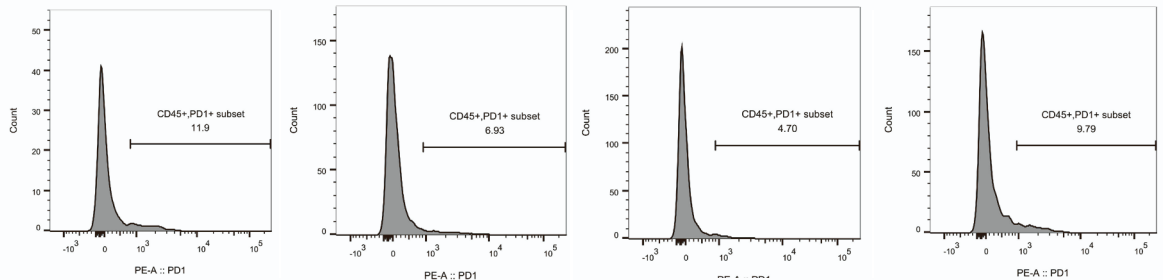


CD45- (n=3)

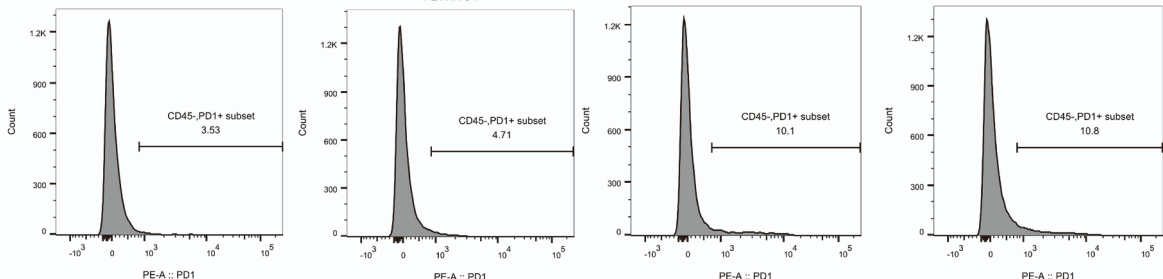


PD1N+EP

CD45+ (n=4)

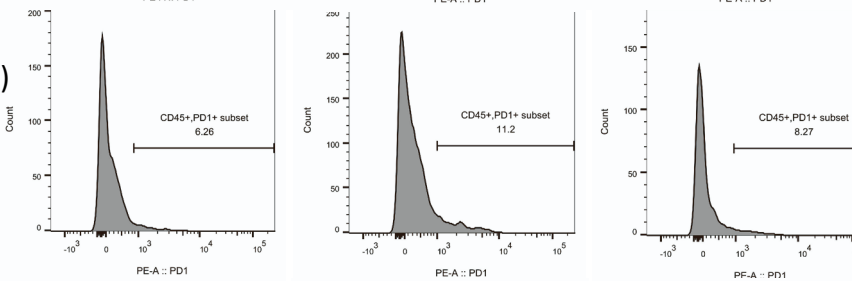


CD45- (n=4)



PD1P+EP

CD45+ (n=3)



CD45- (n=3)

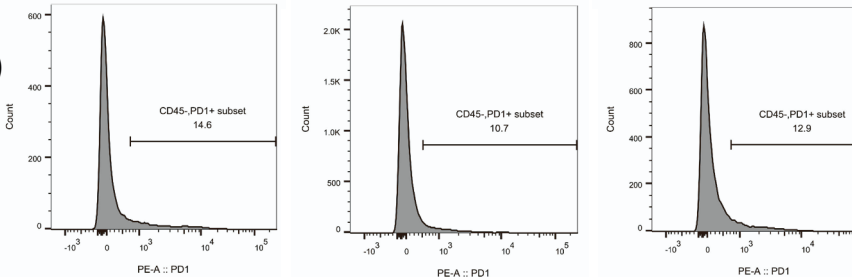


Figure S2. Individual flow cytometry histograms of cells isolated from tumors. PD1N, PD1P, plasmids encoding these peptides; EP, electroporation. See also methods and Figure 2.