

Supplementary Information

FIG. S1. Expression and purification of FM PEP, MX PEP and SC PEP. Lane 1: molecular weight marker labeled with the relevant protein sizes (in kDa); Lane 2: FM PEP; Lane 3: SC PEP; Lane 4: MX PEP. The molecular weights of the three proteins are in the 70-80 kD range.

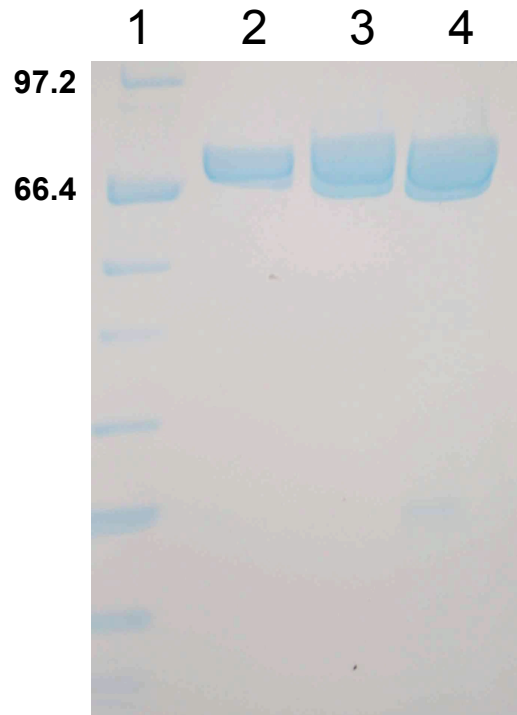


FIG. S2. Reaction kinetics for Suc-Ala-Pro-pNA hydrolysis by FM PEP, MX PEP and SC PEP. Kinetic parameters are summarized in Table 1.

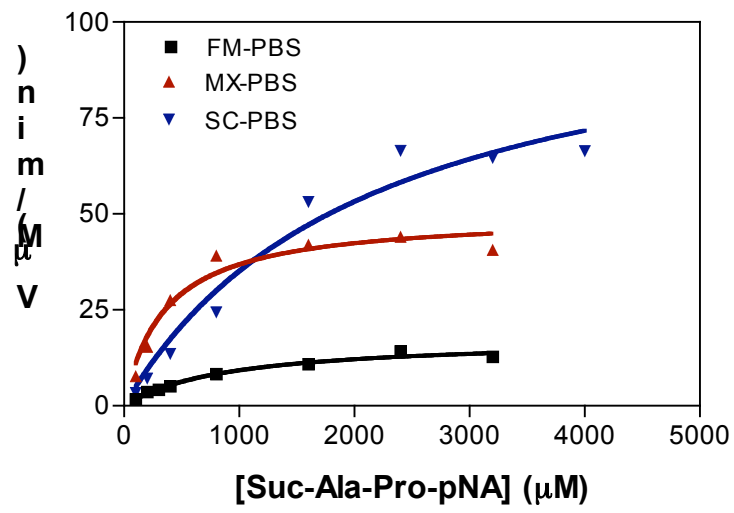


FIG. S3. Competitive proteolysis of PQQQLPYPQQQLP and LQLQPFQPPQQLPYPQQQLPYPQQQLPYPQQQPF by each PEP. 10 μ M of the longer peptide and 50 μ M of the shorter peptide were co-incubated with 0.1 μ M of FM PEP, MX PEP, SC PEP.

