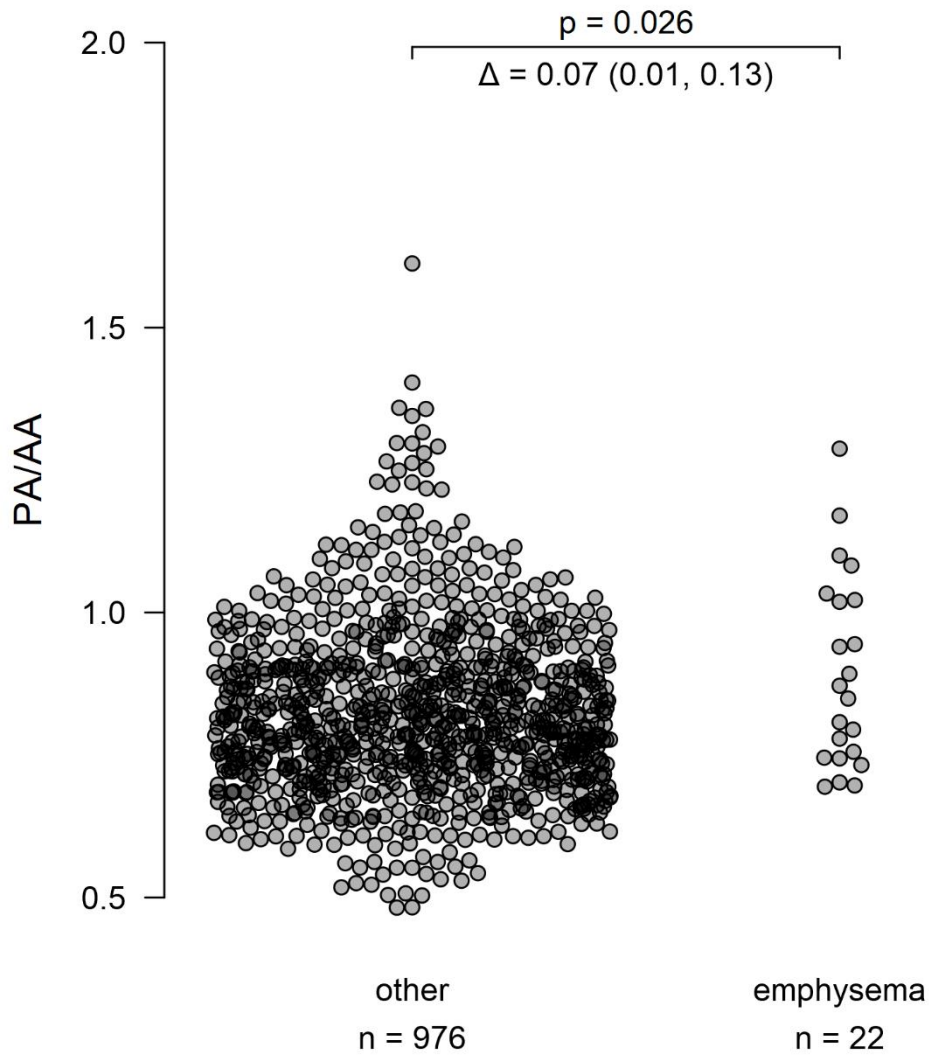


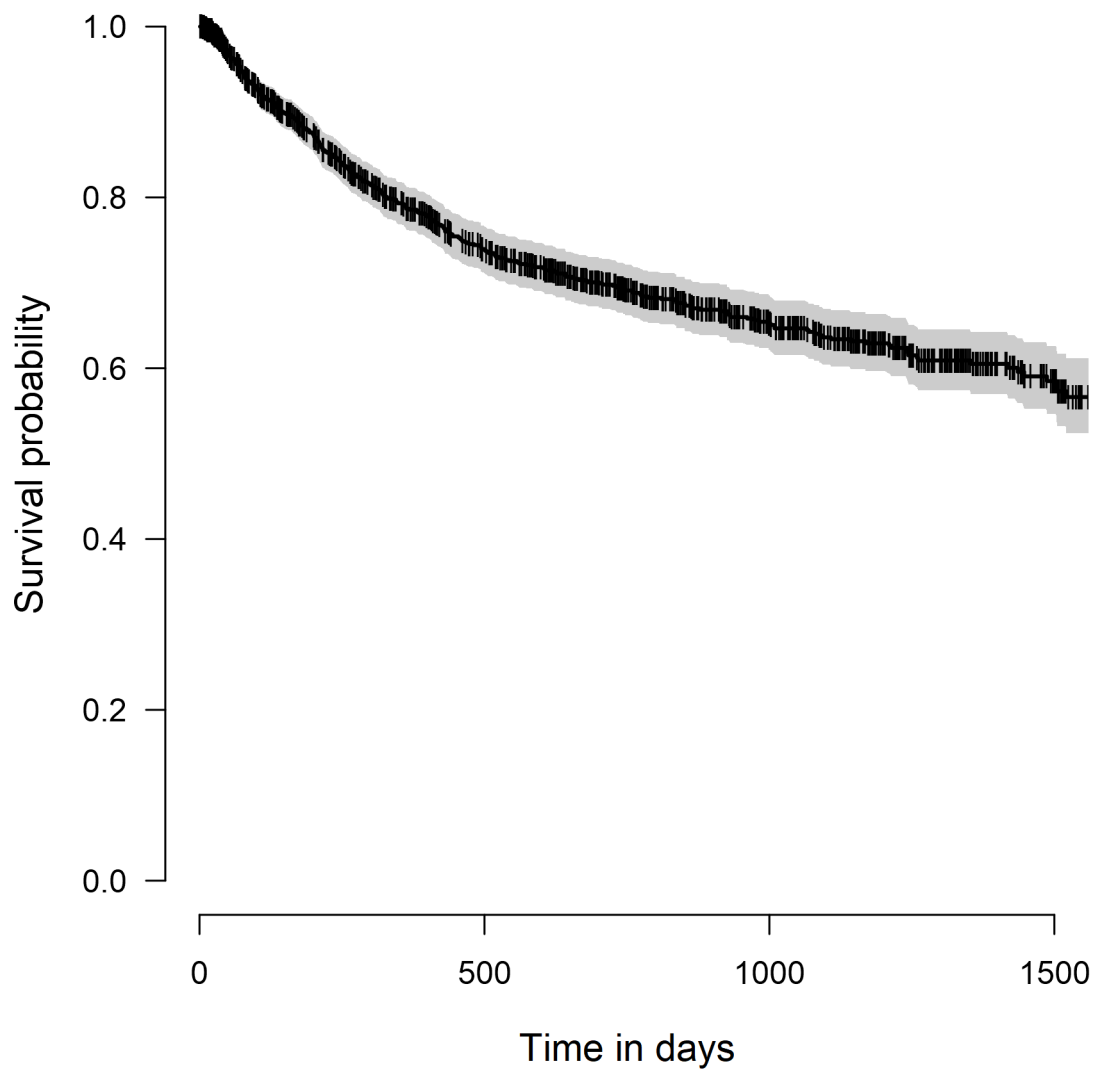
1 **Supplementary Figures and Legends**



2

3 **Supplementary Figure 1**

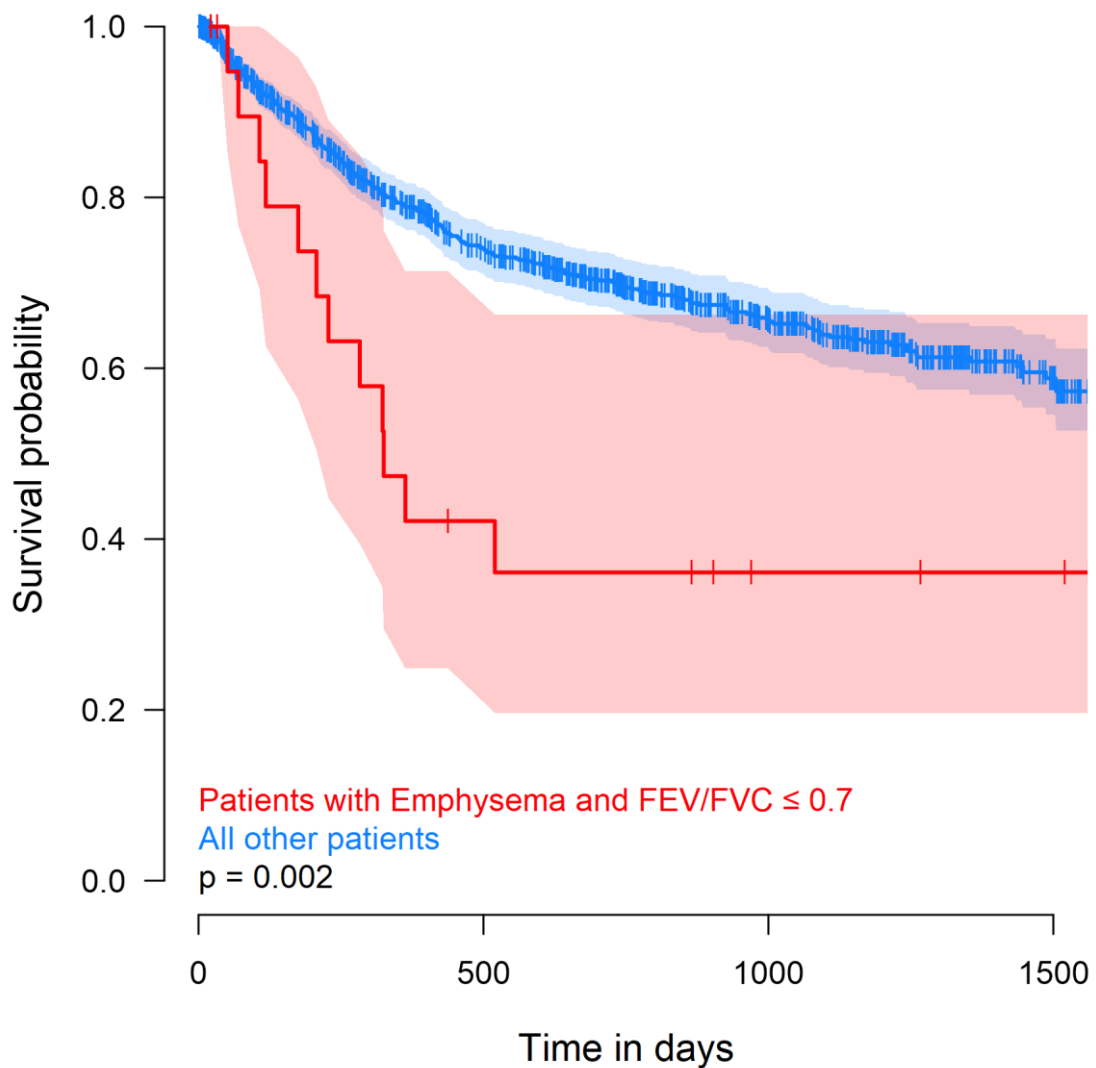
4 Emphysema= Existence of emphysema in a patient assessed by a thorax CT-scan and a
5 FEV1/FVC<0.7 on pulmonary function testing at baseline. Other= all other patients of the
6 cohort. Dots represent PA/A ratio of each individual patient at baseline.



1

2 **Supplementary Figure 2**

3 Overall survival of all patients of the entire cohort using a Cox proportional hazards (Cox PH)
4 model adjusting for sex, age, cancer and Union for international cancer control (UICC) stage.
5 Figure shows the Kaplan-Meier curve with its 95% confidence interval.



1
2

3 **Supplementary Figure 3**

4 Overall survival (OS) of patients stratified by existence of emphysema in a patient assessed
 5 by a thorax CT-scan and a FEV1/FVC<0.7 on pulmonary function testing at baseline. The
 6 impact of emphysema was analyzed using Cox proportional hazards (Cox PH) models
 7 adjusting for sex, age, cancer and Union for international cancer control (UICC) stage. Figure
 8 shows the Kaplan-Meier curves with their 95% confidence intervals stratified for the existence
 9 of emphysema and the p-value is from the Cox proportional hazard model.