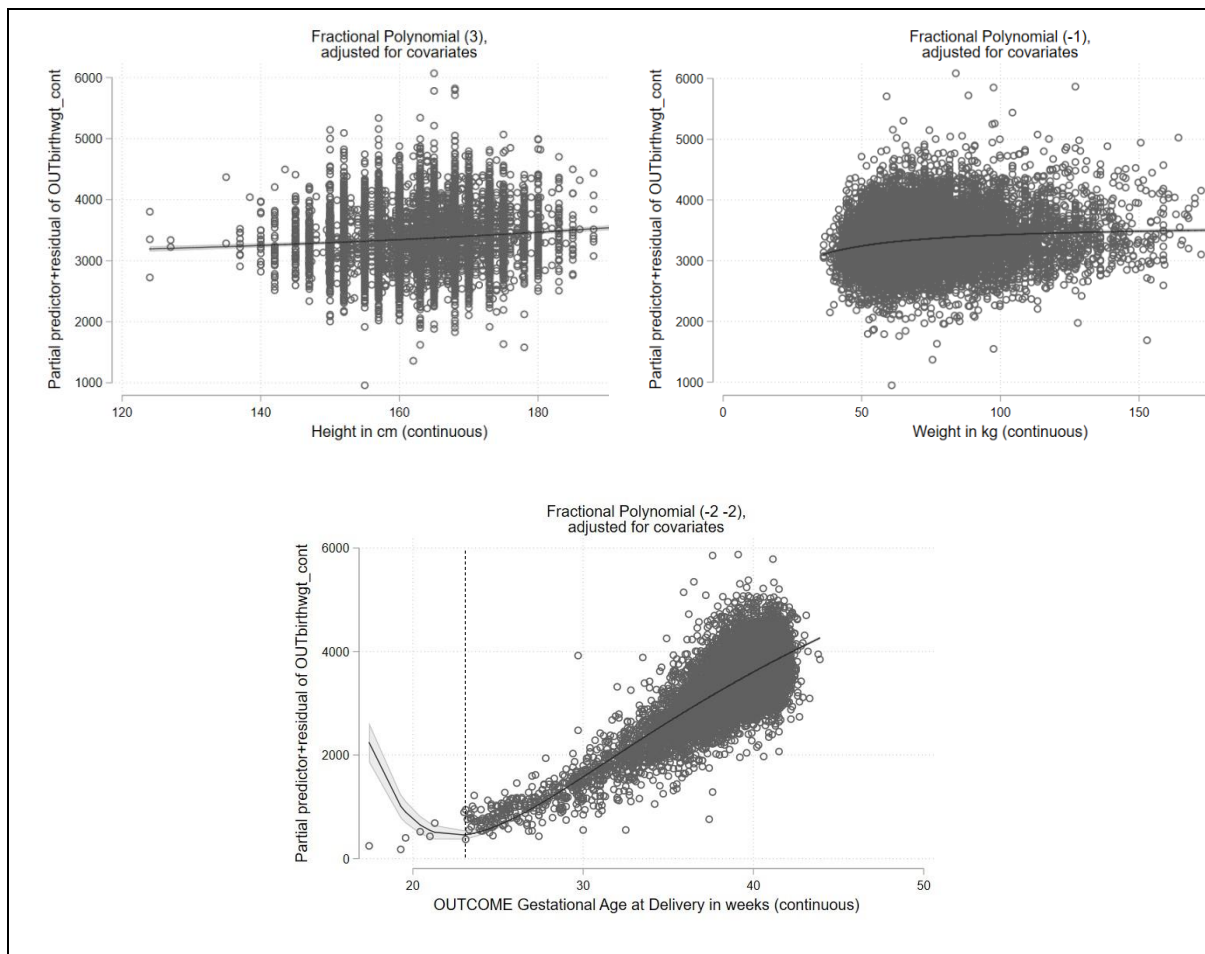


Appendix 3 Best fitting fractional polynomial transformations for continuous predictors



The number in brackets shows the best fitting transformation, where (3) is FP1 with a power of x^3 , (-1) is FP1 with the reciprocal (power x^{-1}), and (-2 -2) is FP2 with the powers of x^{-2} and $x^{-2} \ln x$

*Given the shape of selected FP2 transformation, predictions will not be clinically relevant when based on assumed gestational ages below 23 weeks (dotted line).