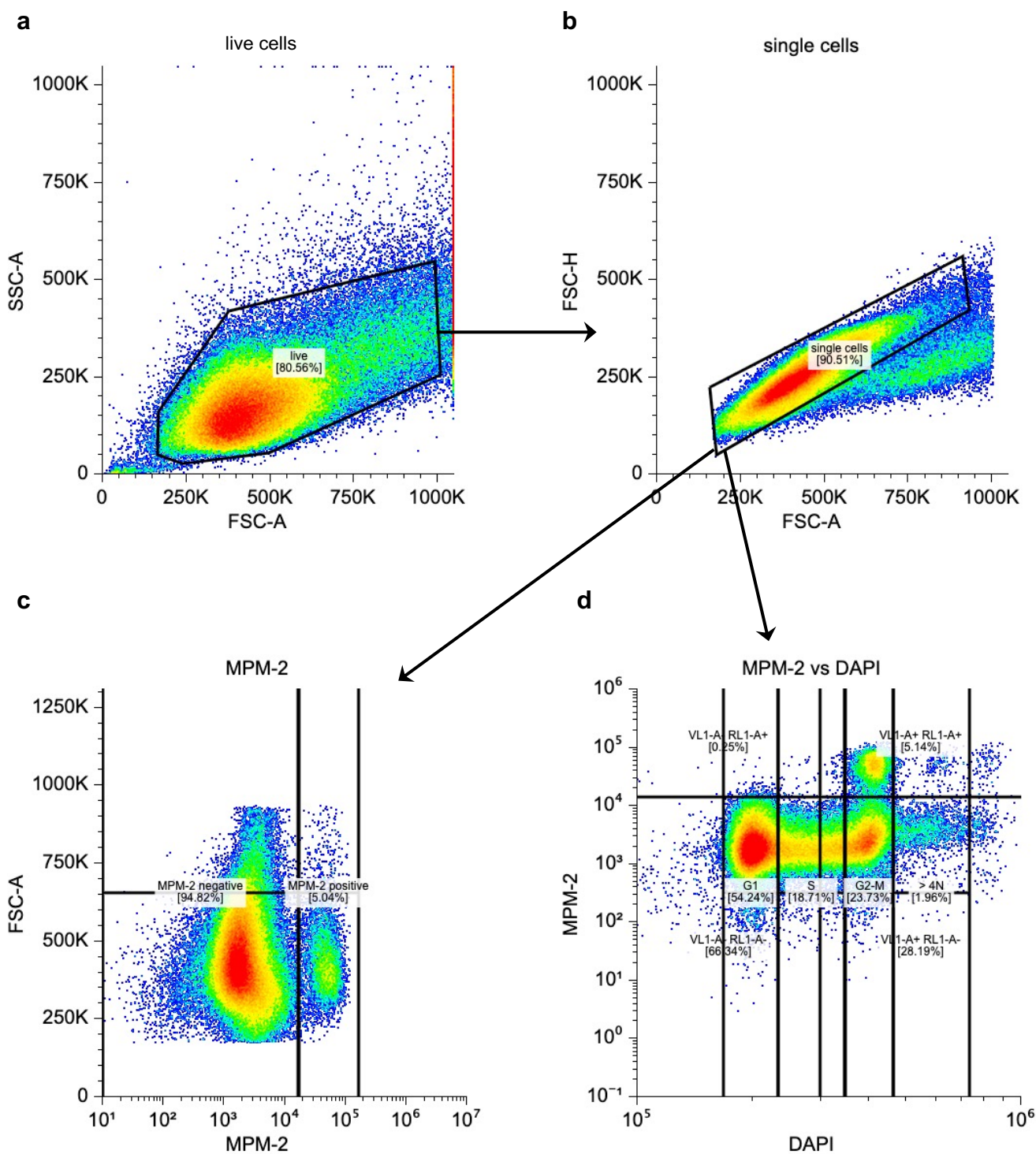
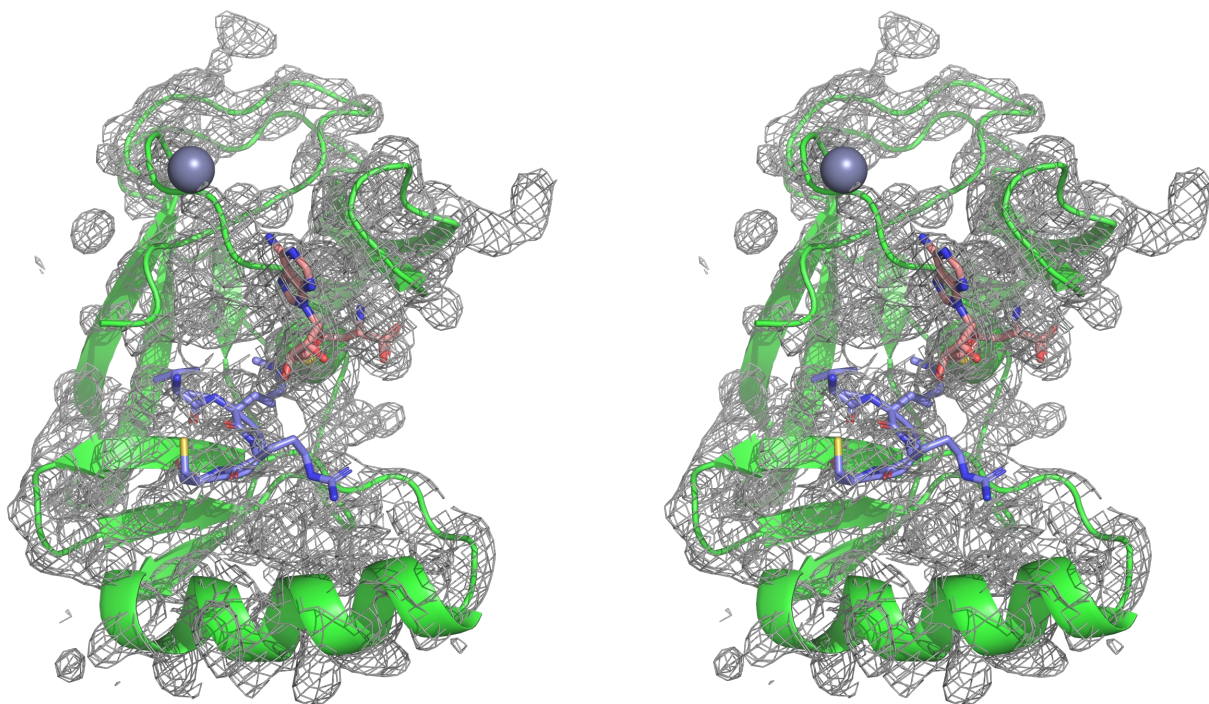


Supplementary Figure 1. Gating strategy for flow cytometry data analysis



Supplementary Figure 1. Gating strategy for flow cytometry data analysis. (a) Total cell population was subjected to live cell gating. FSC-Area/SSC-Area gates were applied to exclude cell debris and select live cells. (b) Live cell population was subjected to singlet gating. FSC-Area/FSC-Height gates were applied to select single cells. (c) MPM-2 positive cells were gated according to the signal intensity compared to unstained sample. (d) MPM-2-DAPI gating were applied for bivariate analysis of cell populations.

Supplementary Figure 2. Stereo image for crystal structure of MLL1^{SET}-Borealin



Supplementary Figure 2. Stereo image for the crystal structure of MLL1^{SET}-Borealin. Stereo image of the electron density map for co-crystallization between MLL1 SET domain and Borealin peptide₁₃₇₋₁₄₅ reported in this study.