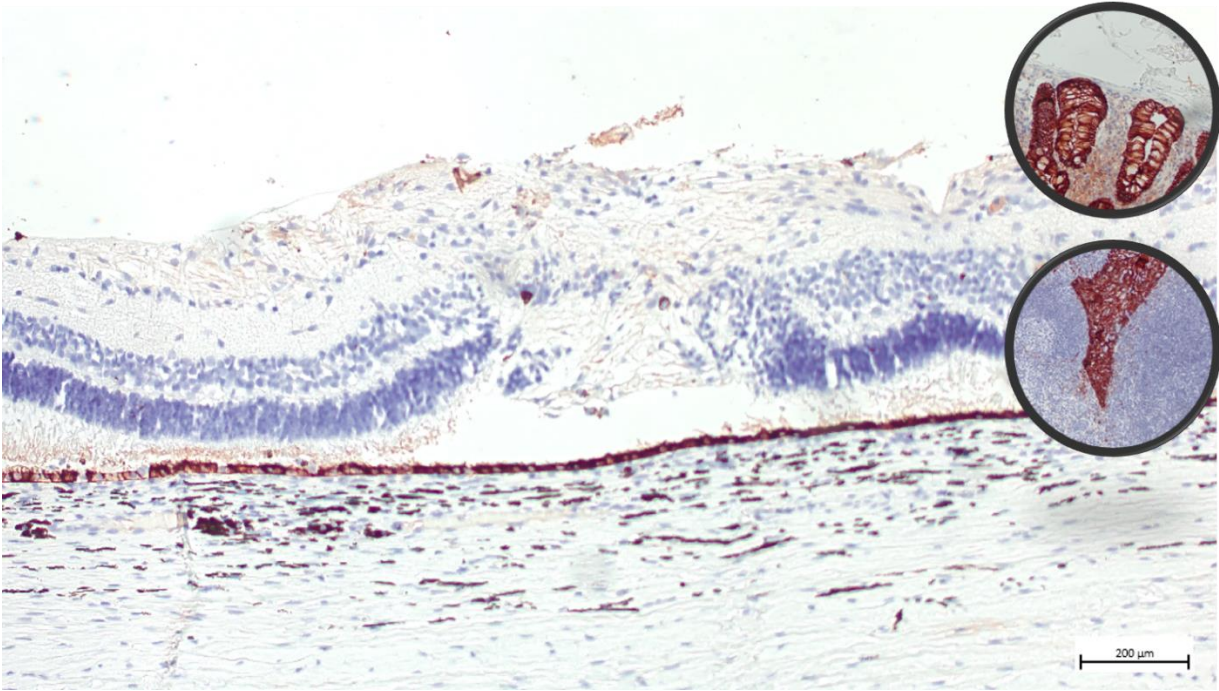


**Supplementary Figure S1**



**S1. Immunohistochemical (IHC) staining of a spontaneous closed retinal hole using a neuroepithelial antibody.** IHC shows that the retinal plug does not contain cells positive for anti-cytokeratin (CK-AECAM), representing RPE cells. The positive controls, shown on the right, include gut and lymphoma tissue.