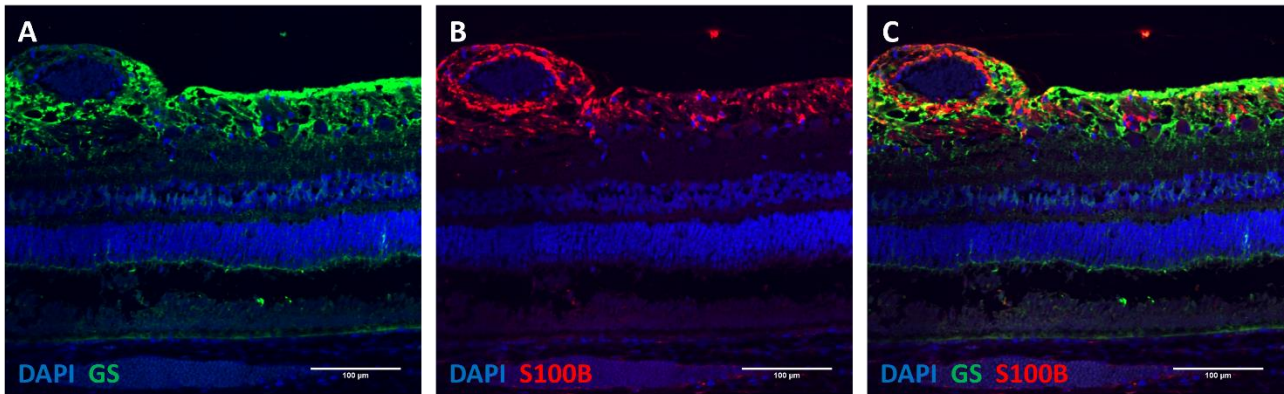


## Supplementary Figure S2



**Immunohistochemical staining for Müller glia and astrocytes in the uninjured porcine retina.** (A) Anti-glutamin synthetase (GS)-positive Müller glia and their processes throughout the entire thickness of the retina (B) The localization of anti-S100B-positive cells corresponded to that of astrocytes, namely the nerve fiber layer (NFL), the ganglion cell layer (GCL), and around the vessels in the superficial vascular layer (C) The merging of anti-GS and anti-S100B resulted in minimal, if any, co-localization (yellow).