

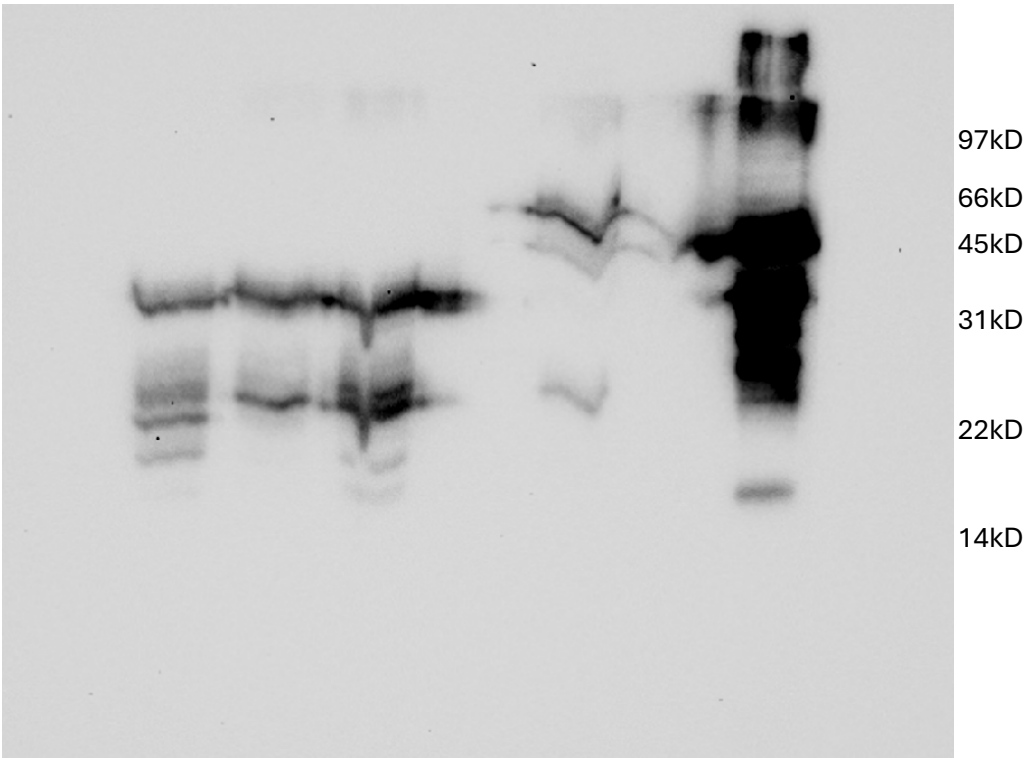
All images are whole-membrane images of PVDF membranes, collected using chemiluminescent imaging on a BioRad ChemiDoc MP Imaging System.

Samples not pertinent to the figure, as indicated above the image in bold, are marked with an 'X' above the lane.

# BbBamA POTRA1-5 WCL anti-GST

## Figure 3

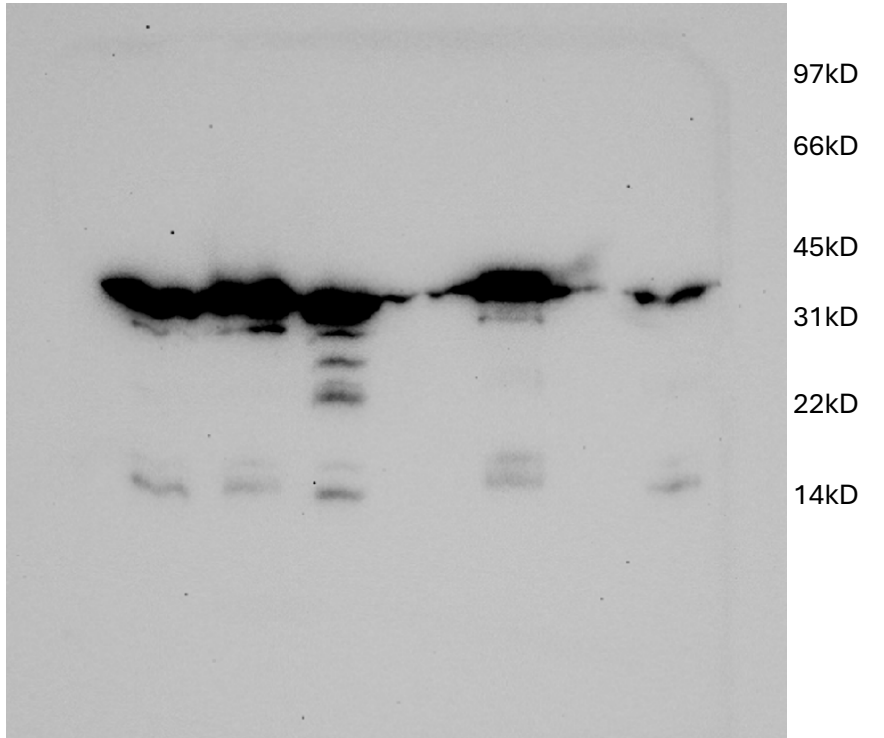
3e1 OspC  
3a1 DUF490  
3b1 Seg 1  
3c1 Seg 2  
3d1 Seg 3



# BbBamA POTRA1-5 WCL anti-His

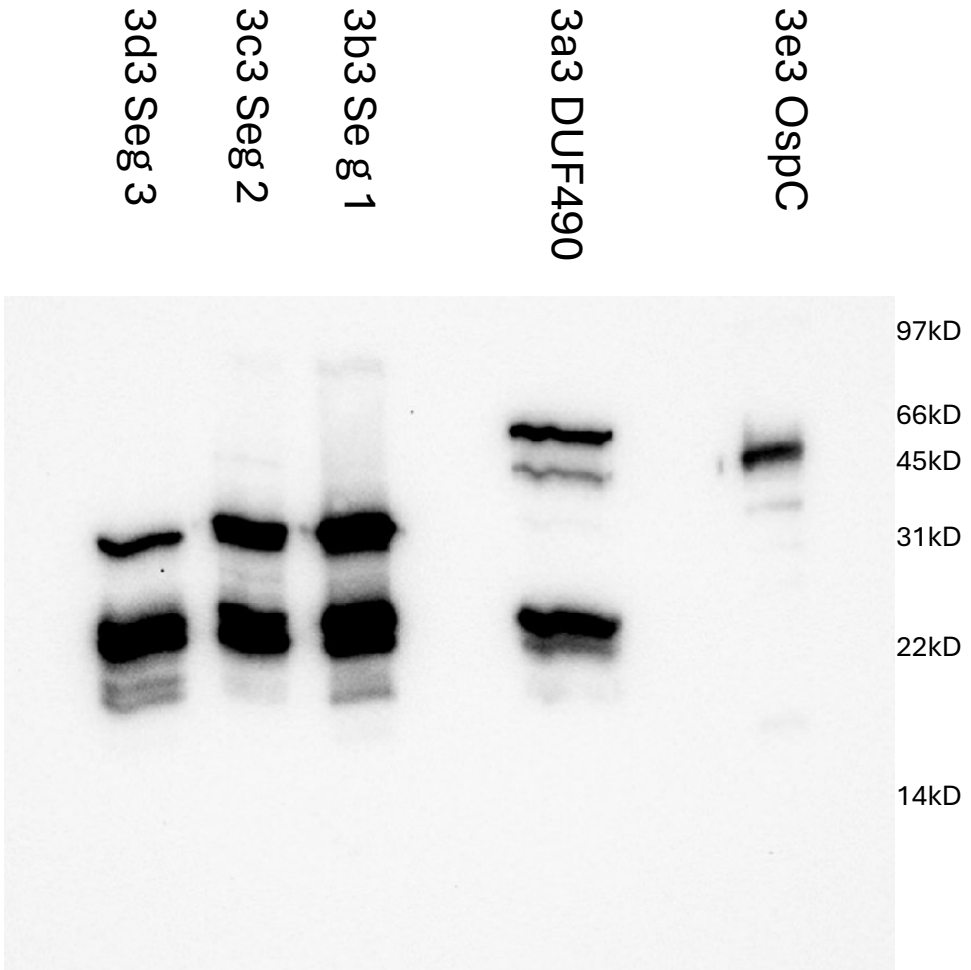
## Figure 3

3e2 OspC  
3a2 DUF490  
3b2 Seg 1  
3c2 Seg 2  
3d2 Seg 3



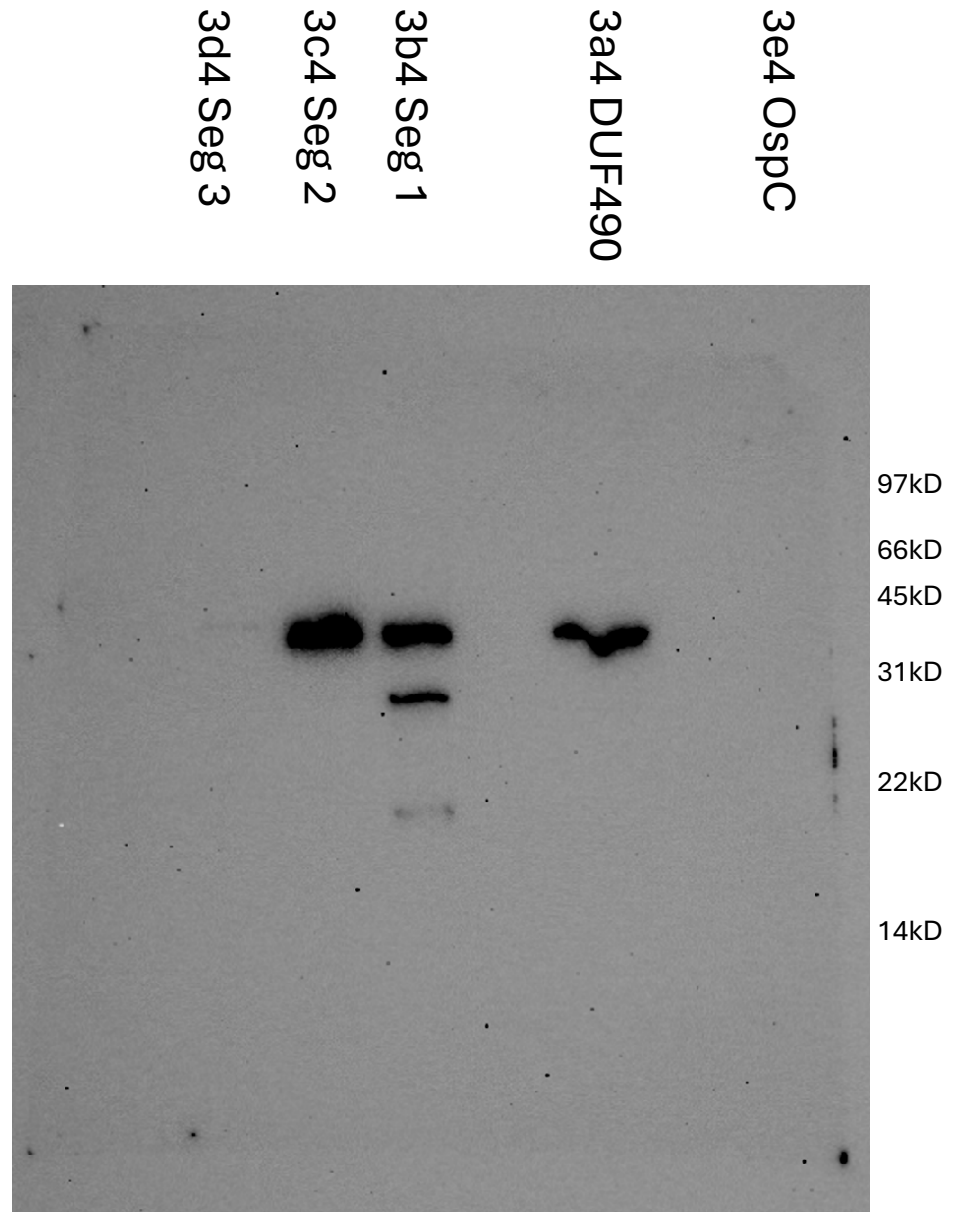
# BbBamA POTRA1-5 Purification anti-GST

## Figure 3



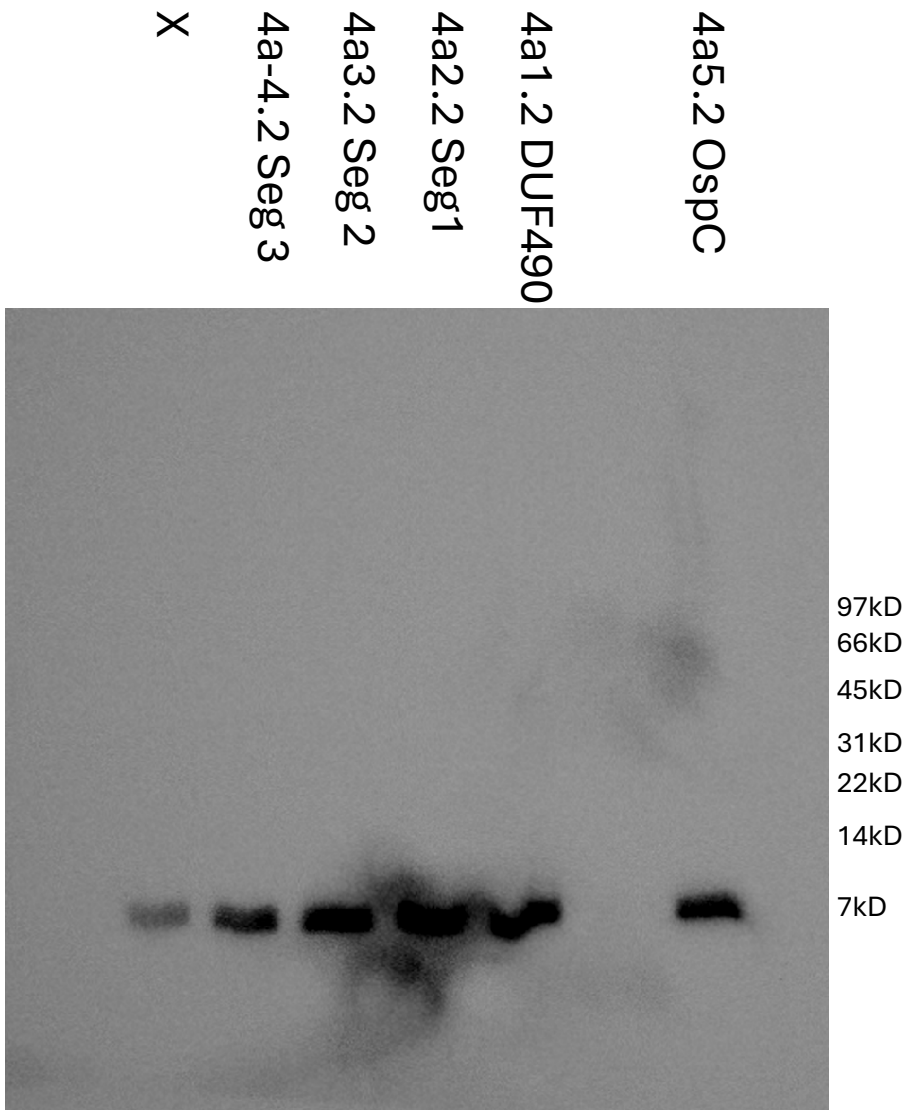
# BbBamA POTRA1-5 Purification anti-His

## Figure 3



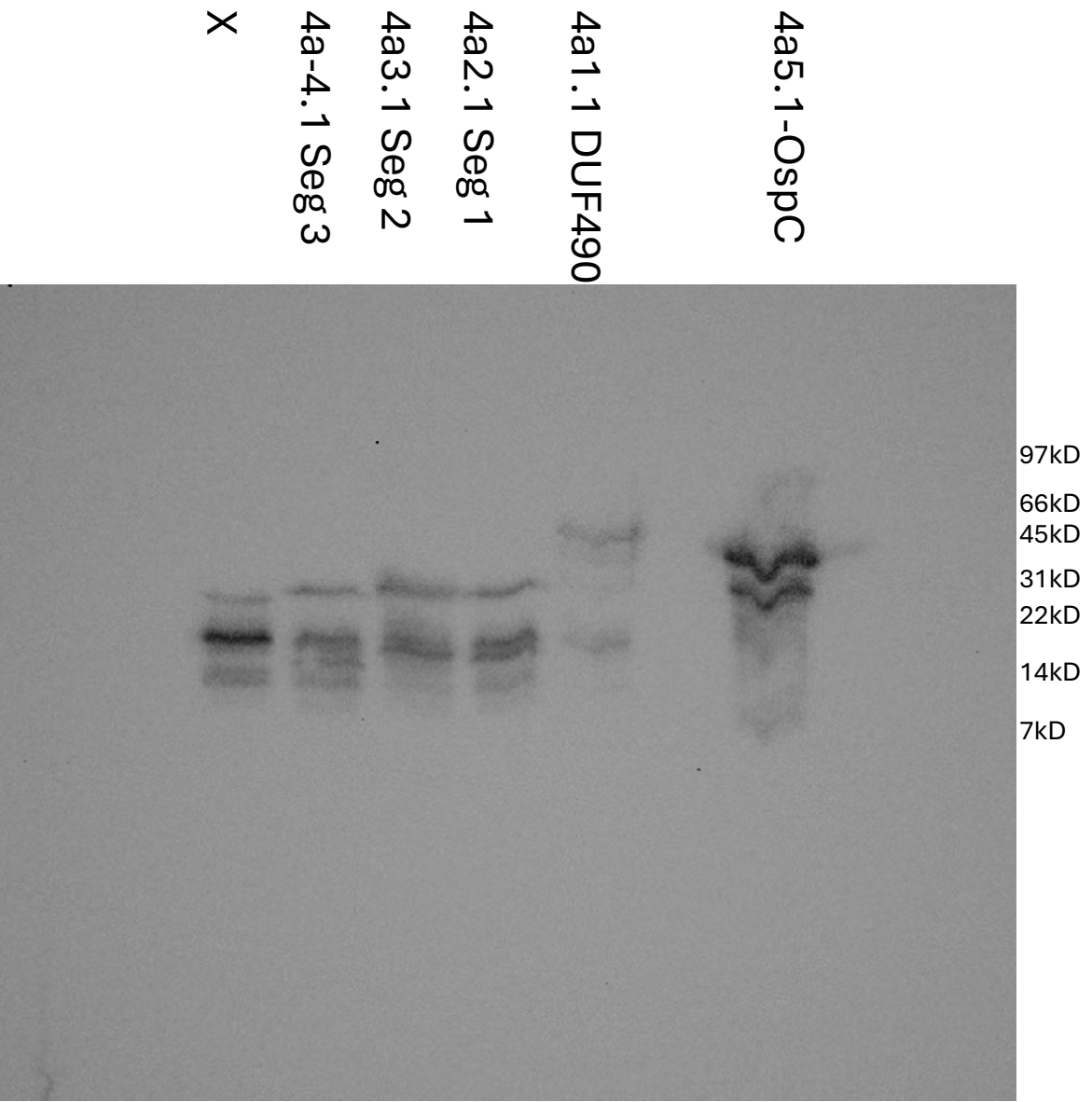
**BbBamA POTRA1 WCL anti-His**

**Figure 4a**



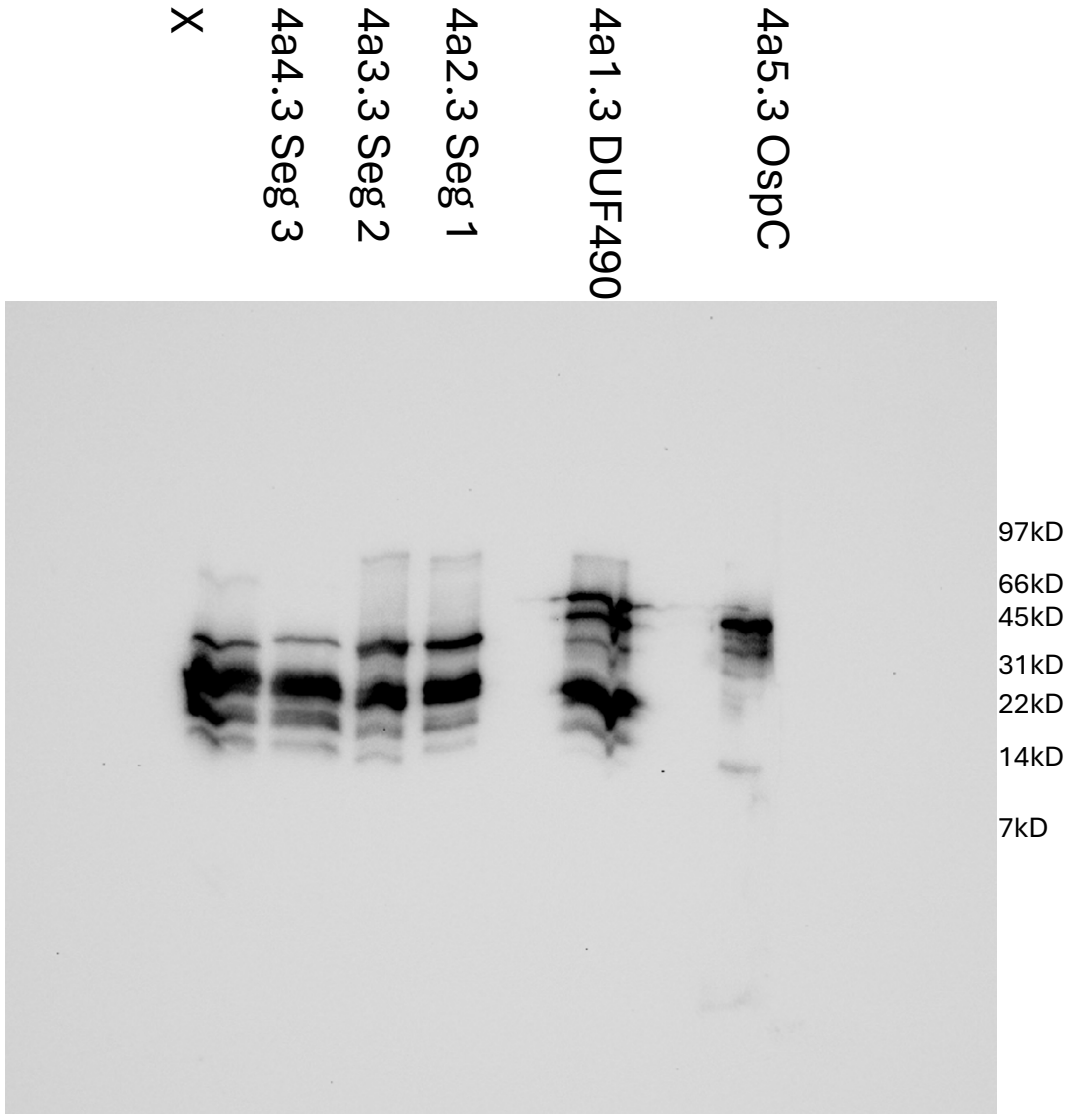
**BbBamA POTRA1 WCL anti-GST**

**Figure 4a**



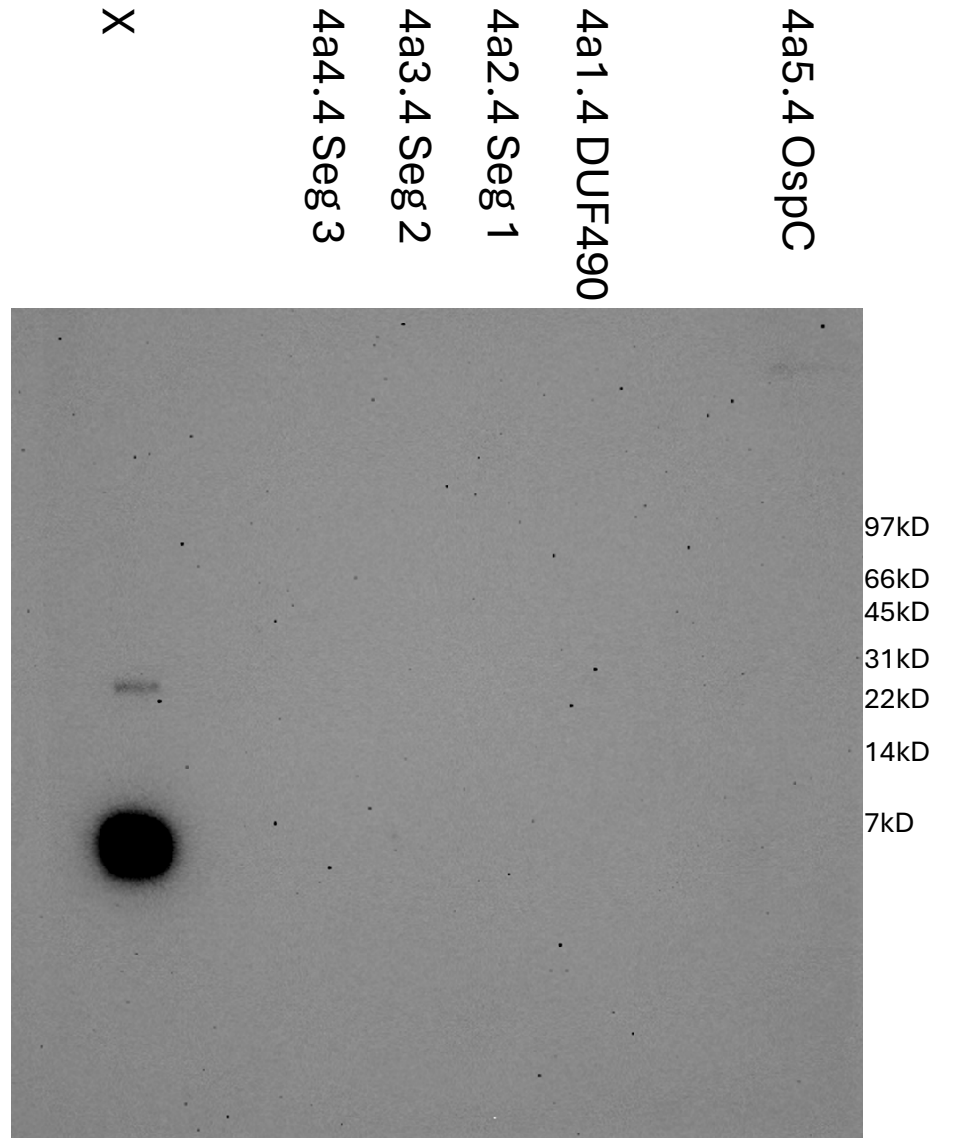
# BbBamA POTRA1 Purification anti-GST

## Figure 4a



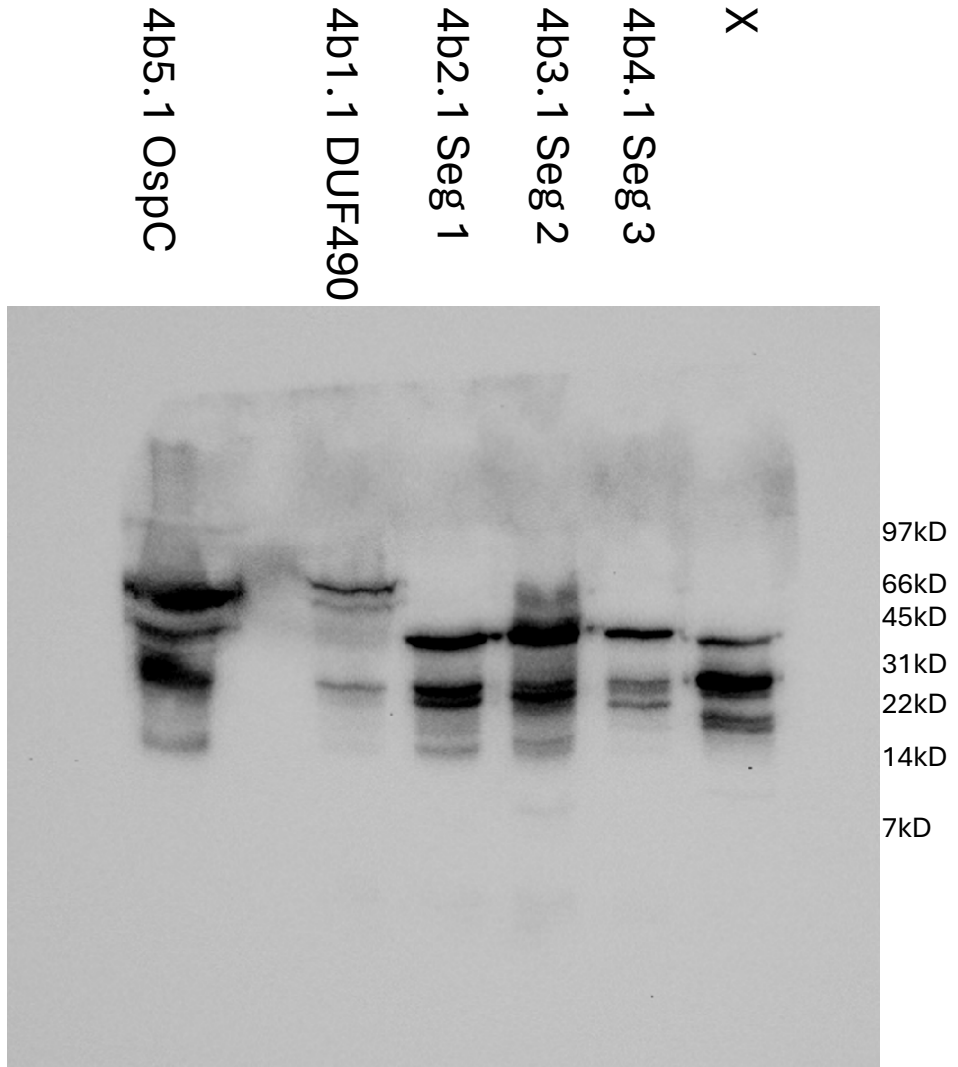
# BbBamA POTRA1 Purification anti-His

## Figure 4a



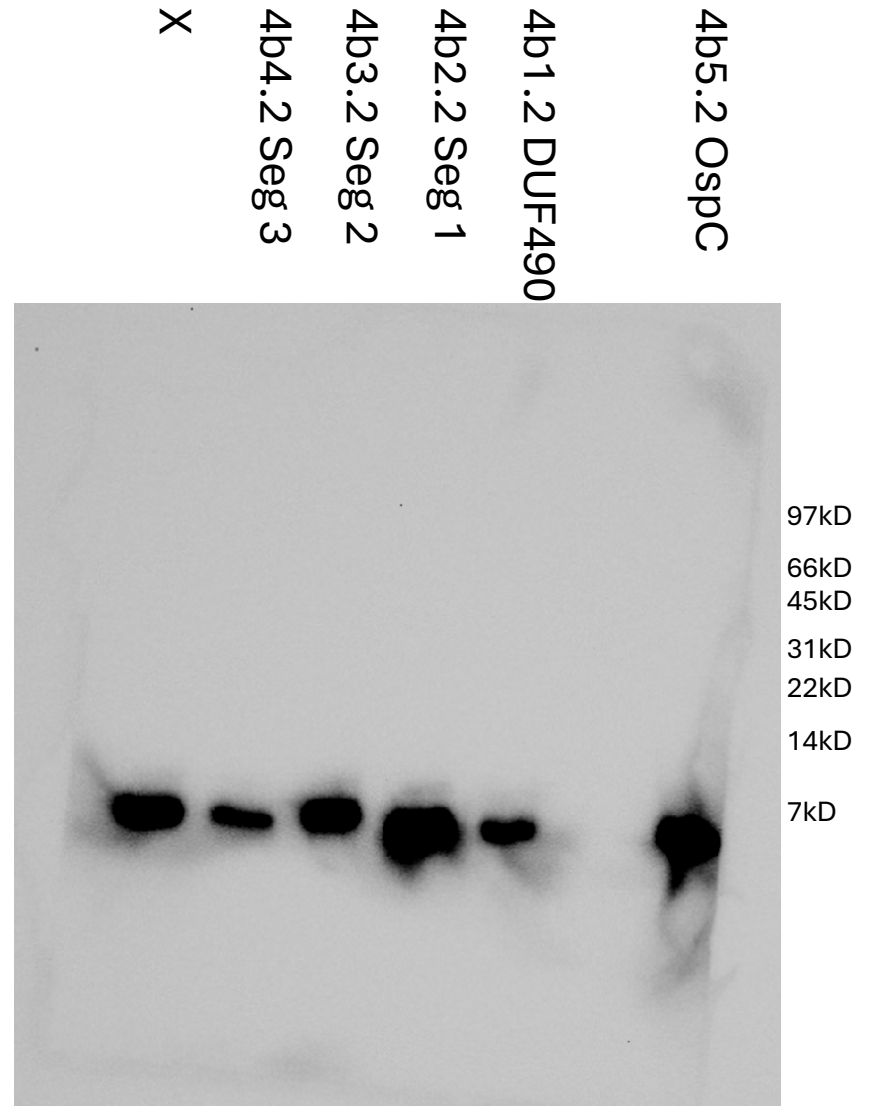
# BbBamA POTRA2 WCL Anti-GST

## Figure 4b



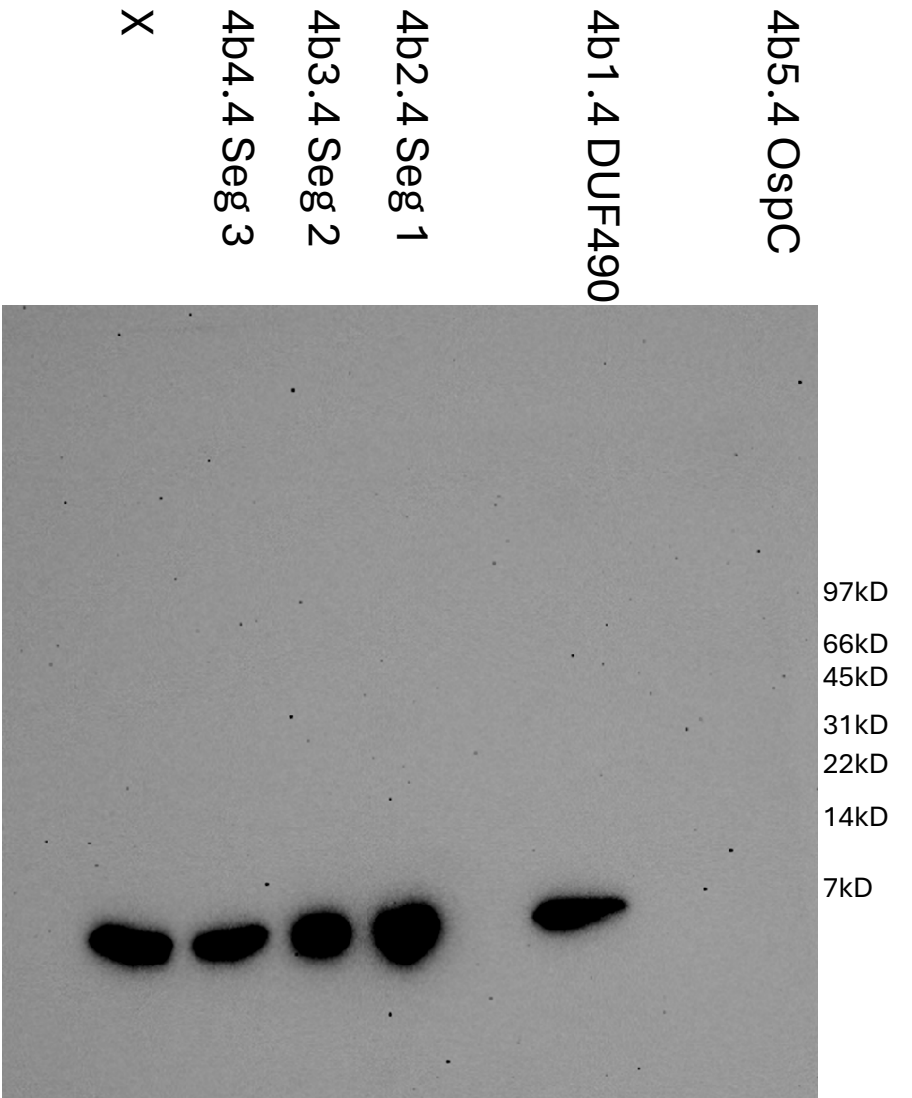
# BbBamA POTRA2 WCL Anti-His

## Figure 4b



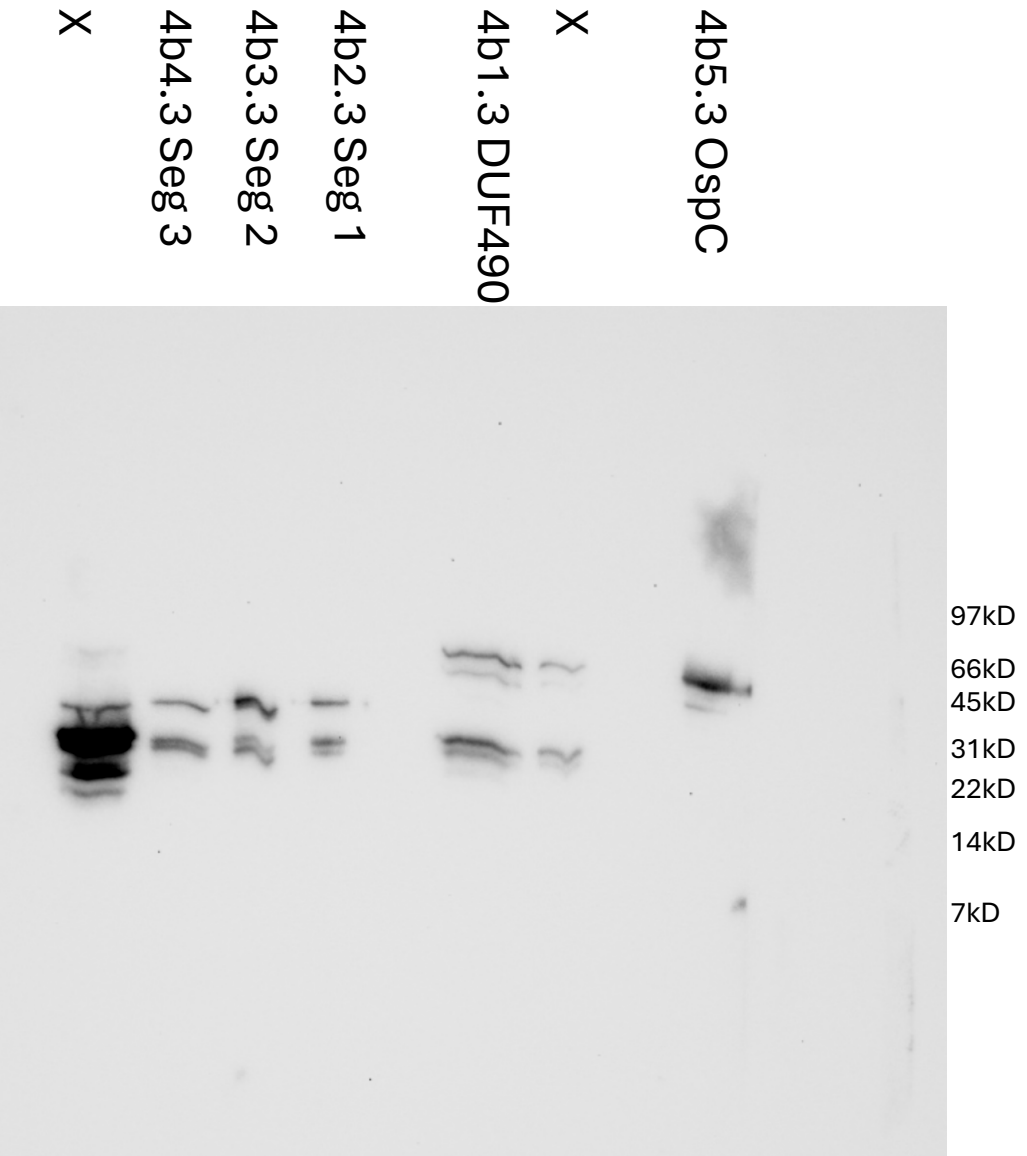
# BbBamA POTRA2 Purification anti-His

## Figure 4b



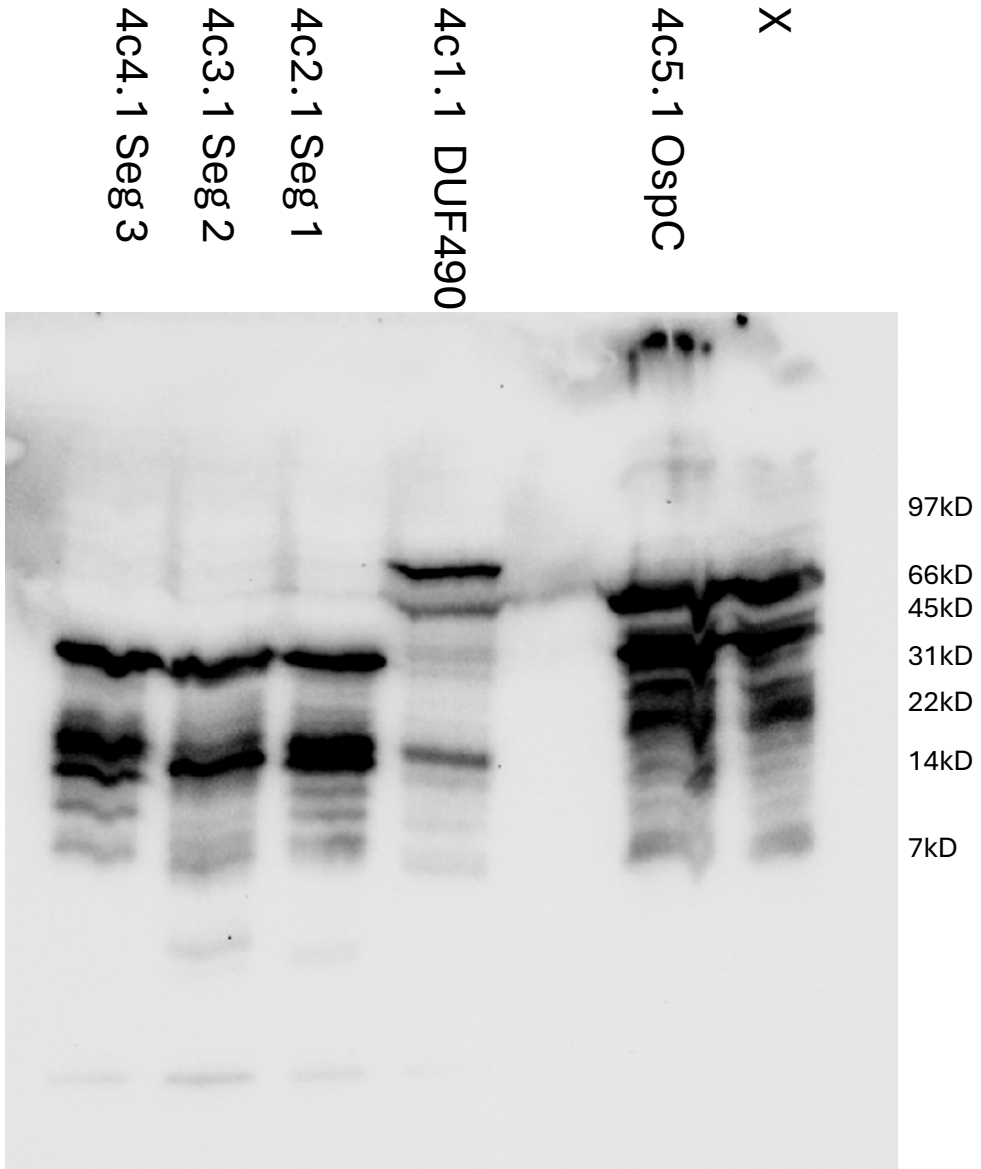
# BbBamA POTRA2 Purification anti-GST

## Figure 4b



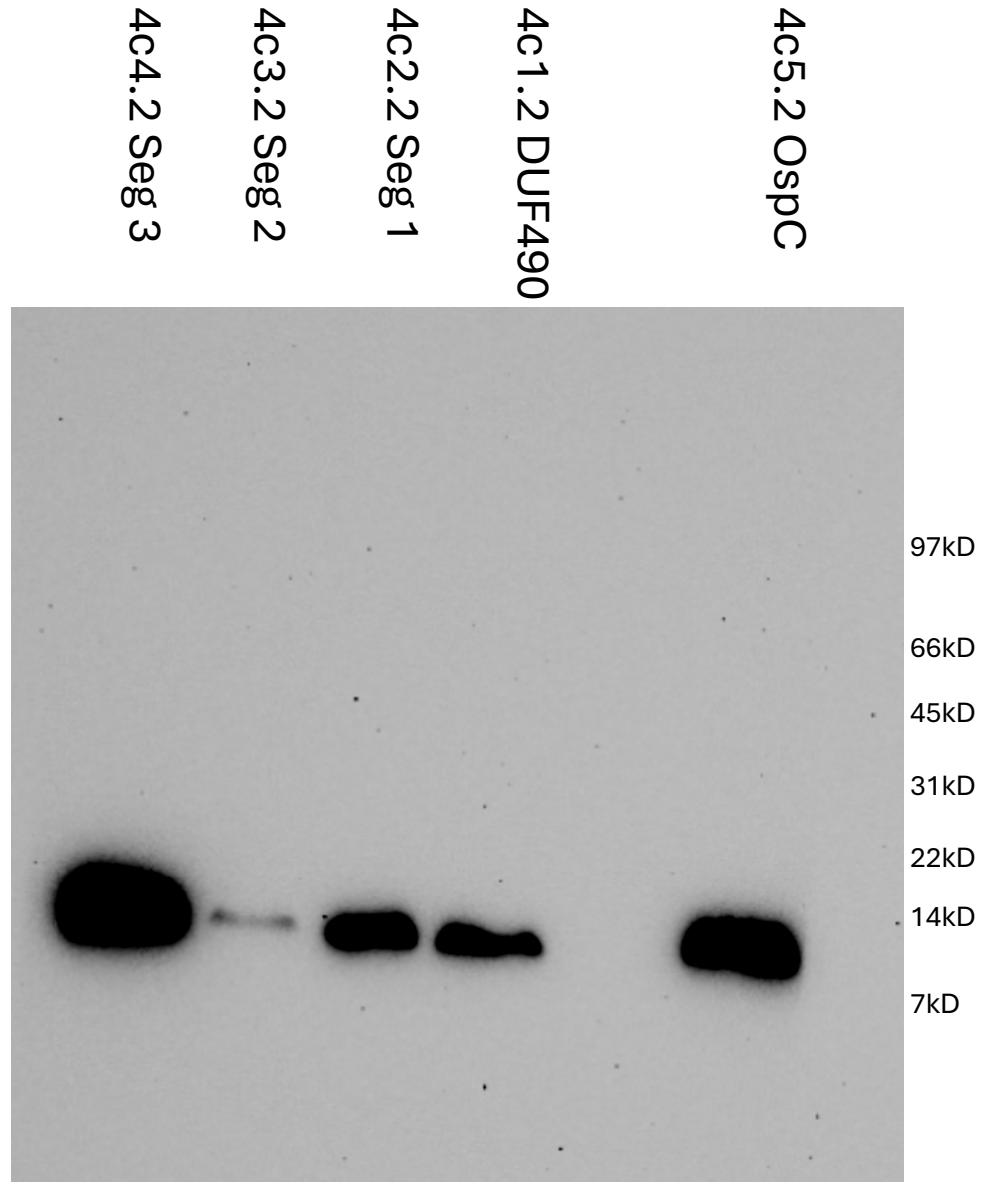
# BbBamA POTRA3 WCL anti-GST

## Figure 4c



# BbBamA POTRA3 WCL anti-His

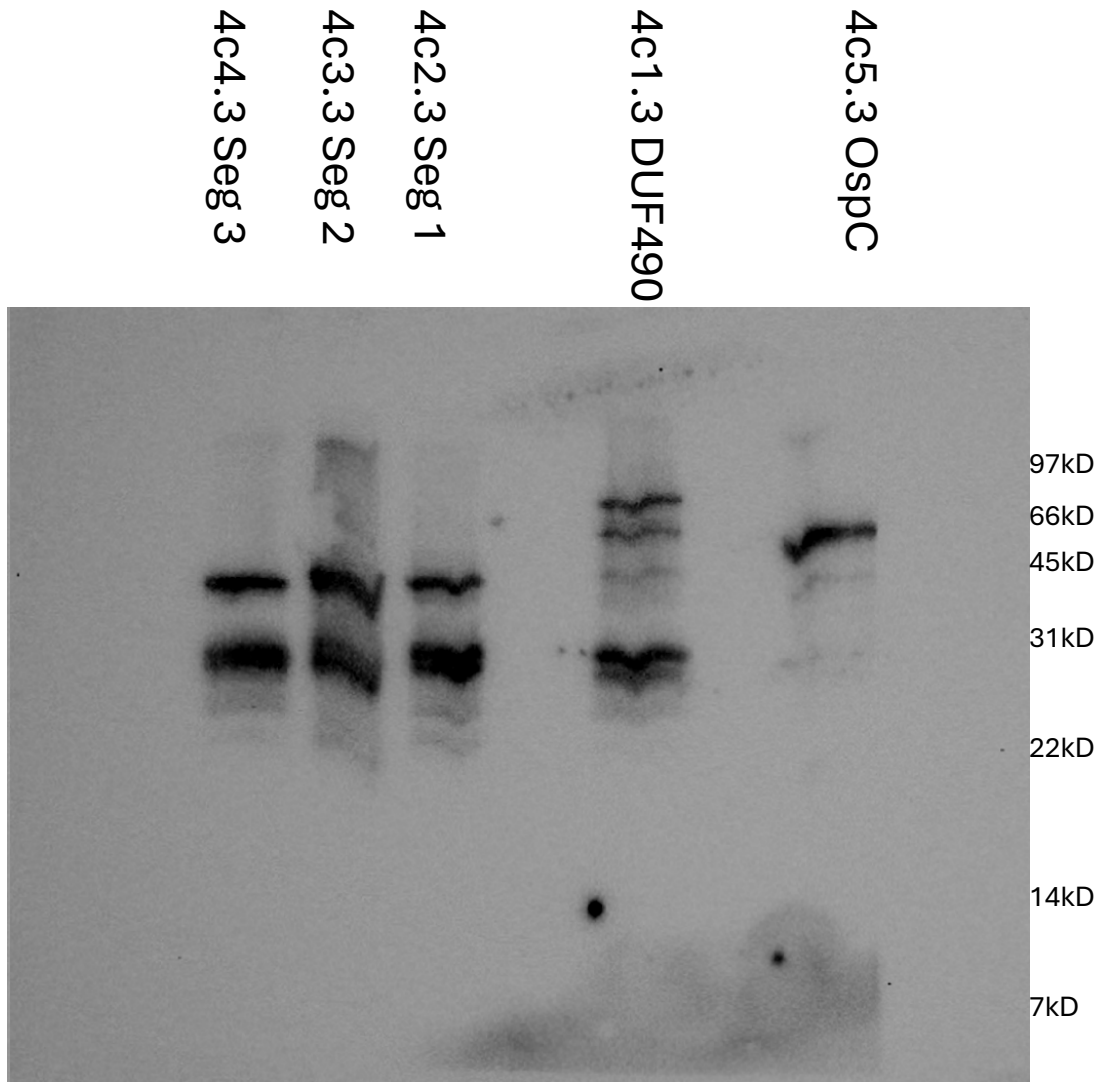
## Figure 4c





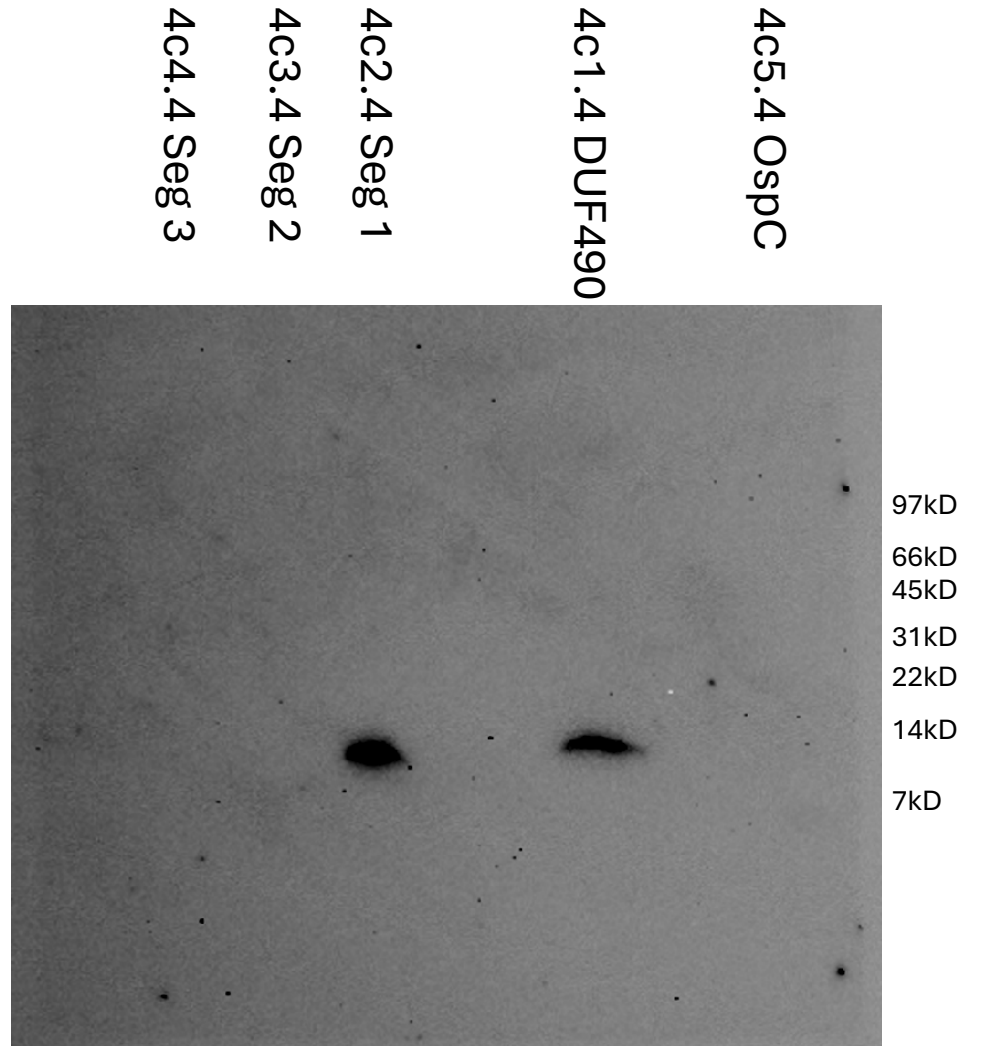
# BbBamA POTRA3 Purification anti-GST

## Figure 4c



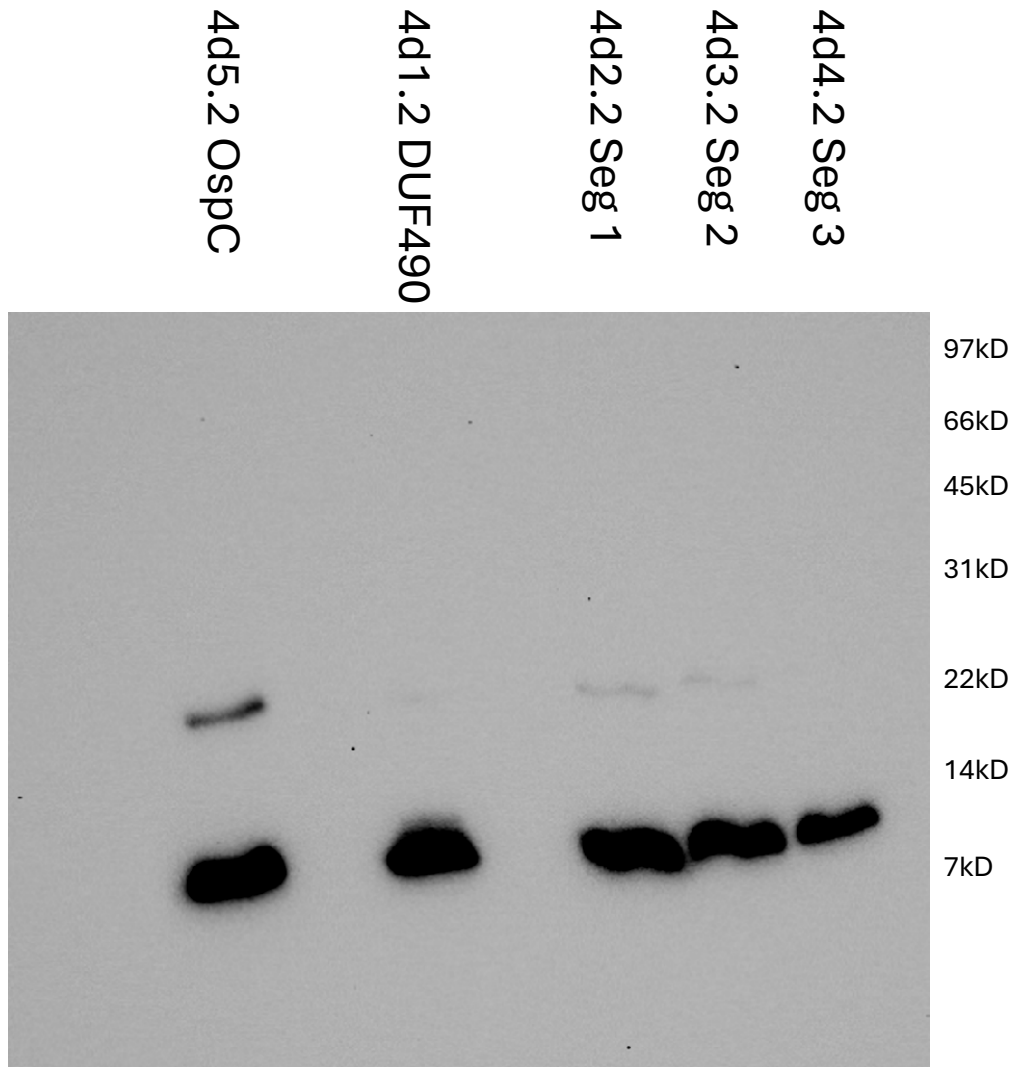
# BbBamA POTRA3 Purification anti-His

## Figure 4c



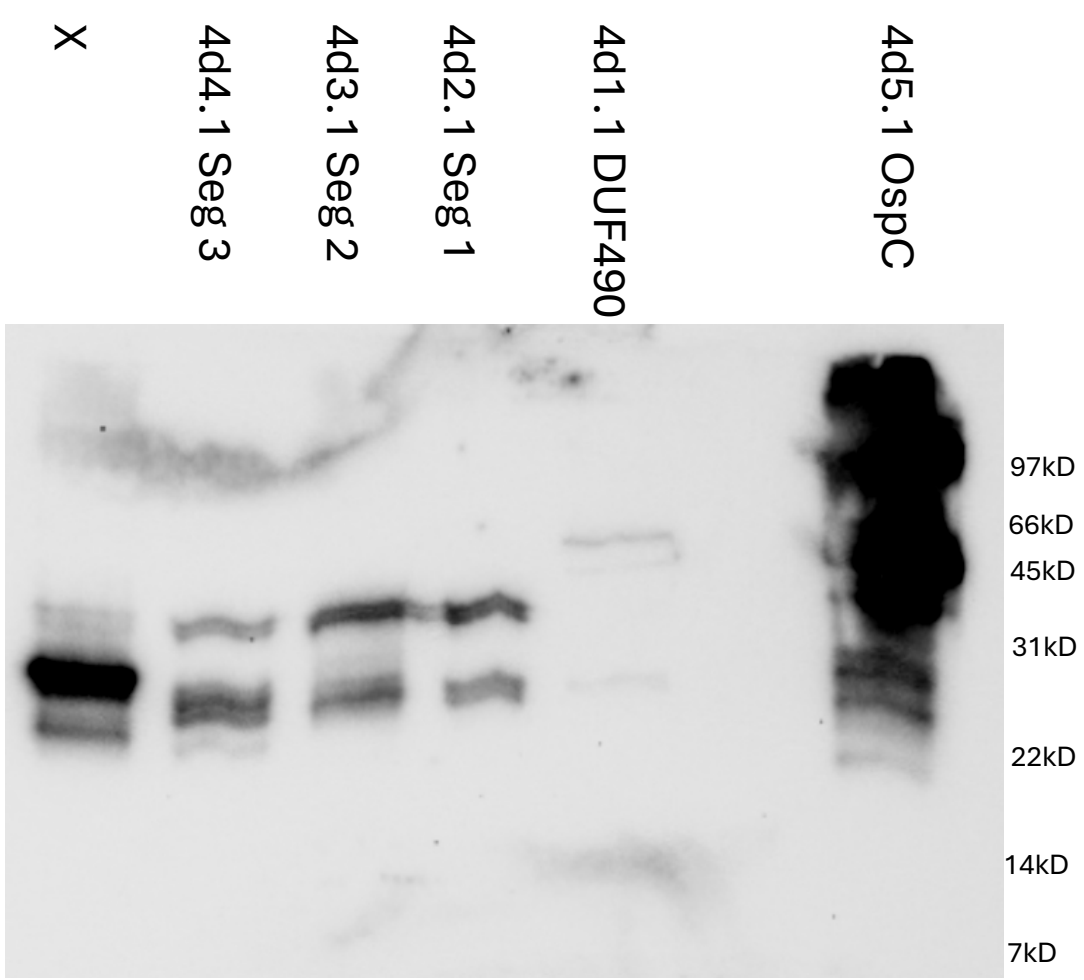
**BbBamA POTRA4 WCL anti-His**

**Figure 4d**



**BbBamA POTRA4 WCL anti-GST**

**Figure 4d**



# BbBamA POTRA4 Purification anti-GST

## Figure 4d

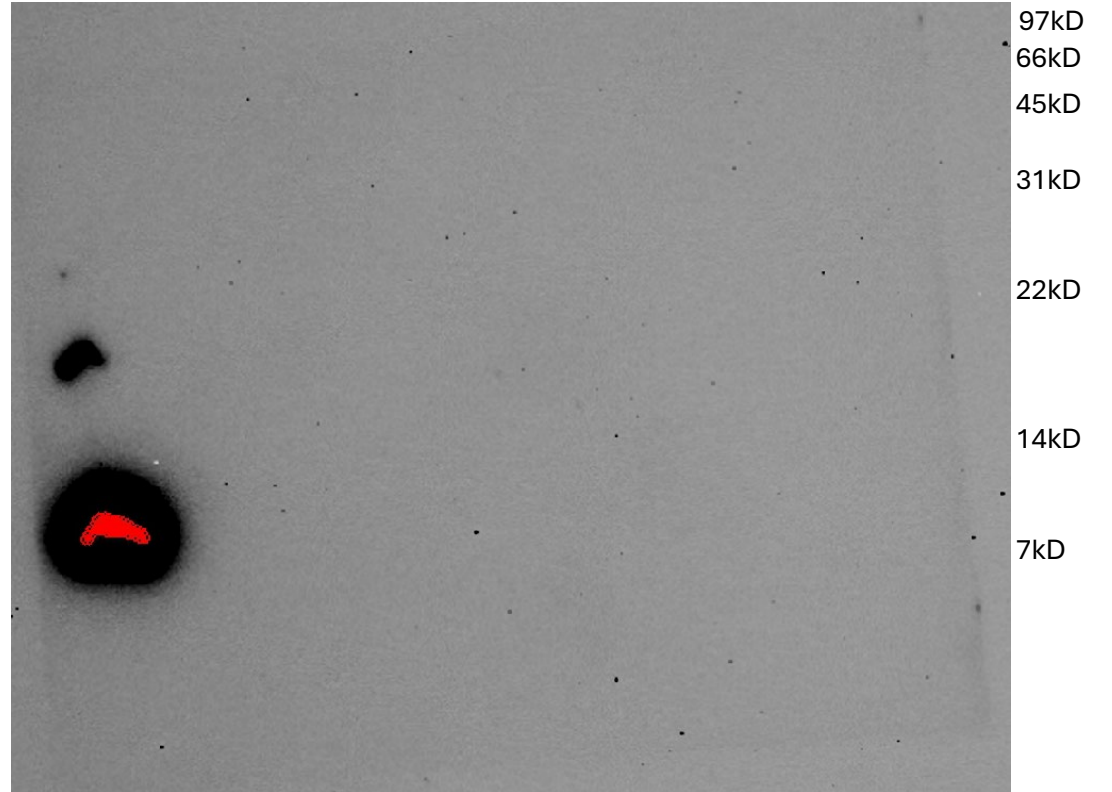
4d5.3 Ospc  
4d1.3 DUF490  
4d2.3 Seg 1  
4d3.3 Seg 2  
4d4.3 Seg 3  
X



# BbBamA POTRA4 Purification anti-His

## Figure 4d

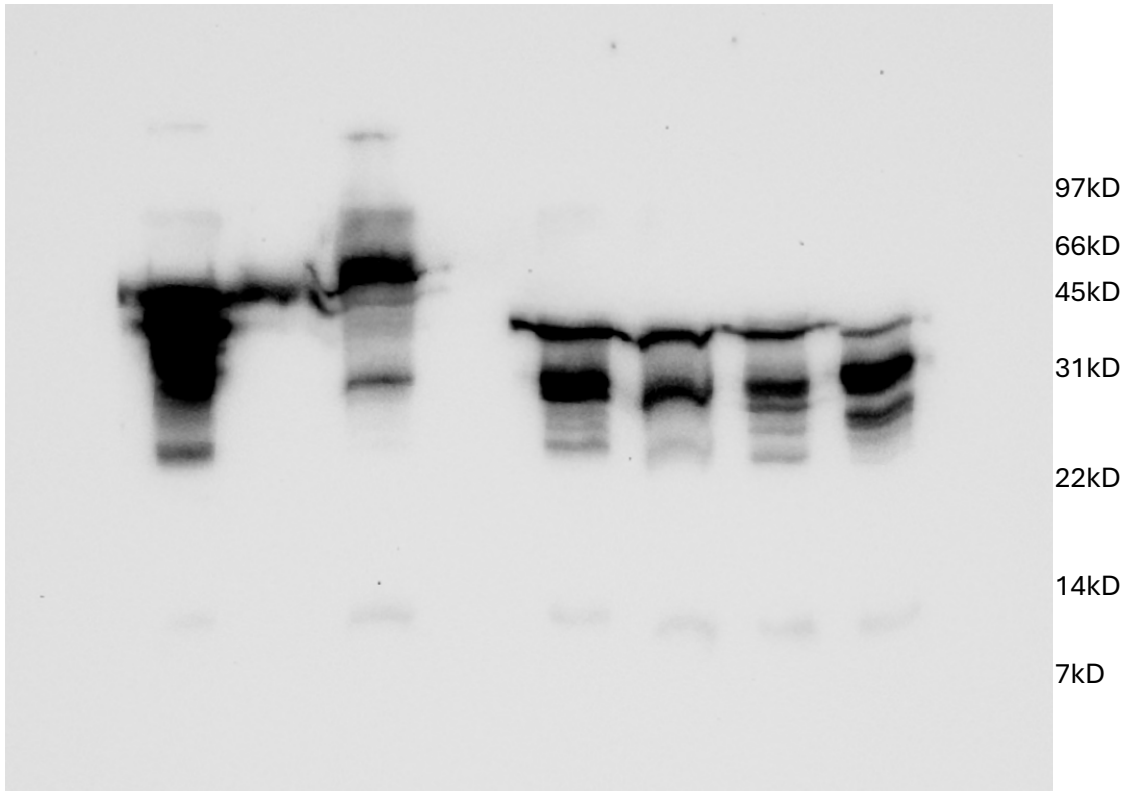
4d5.4 Ospc  
4d1.4 DUF490  
4d2.4 Seg 1  
4d3.4 Seg 2  
4d4.4 Seg 3  
X



# BbBamA POTRA5 WCL anti-GST

## Figure 4e

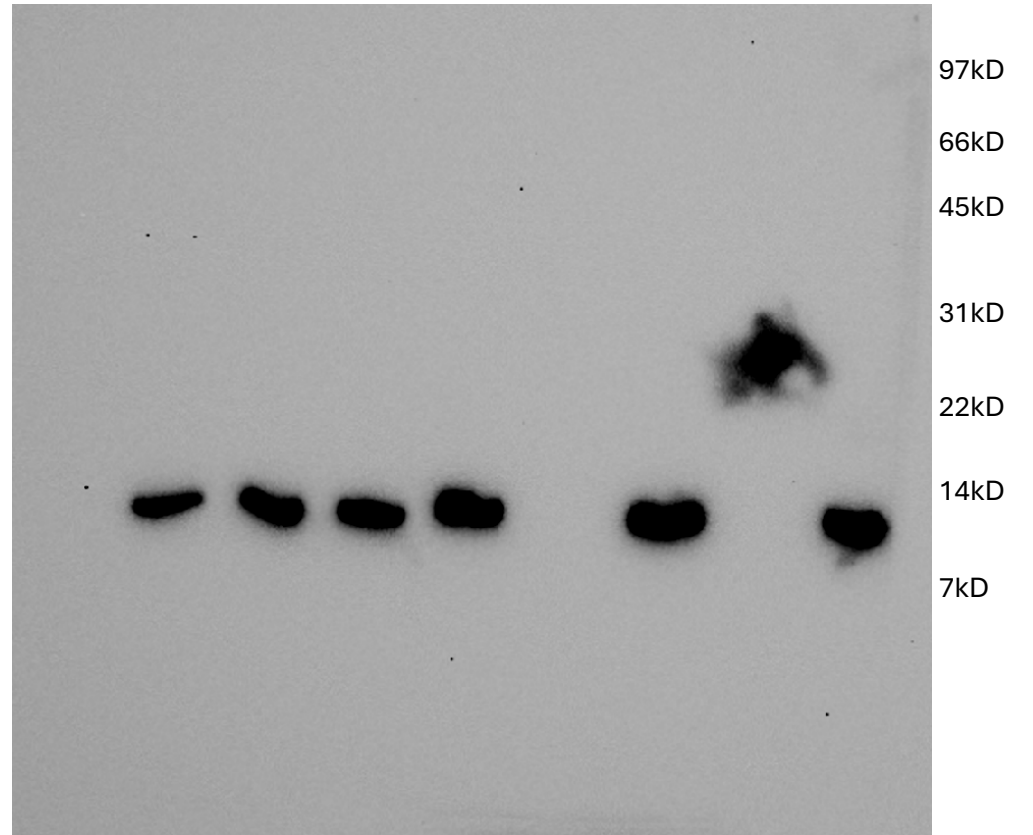
X  
4e4.1 Seg 3  
4e-3.1 Seg 2  
4e2.1 Seg 1  
4e1.1 DUF490  
4e-5.1 Ospc



# BbBamA POTRA5 WCL anti-His

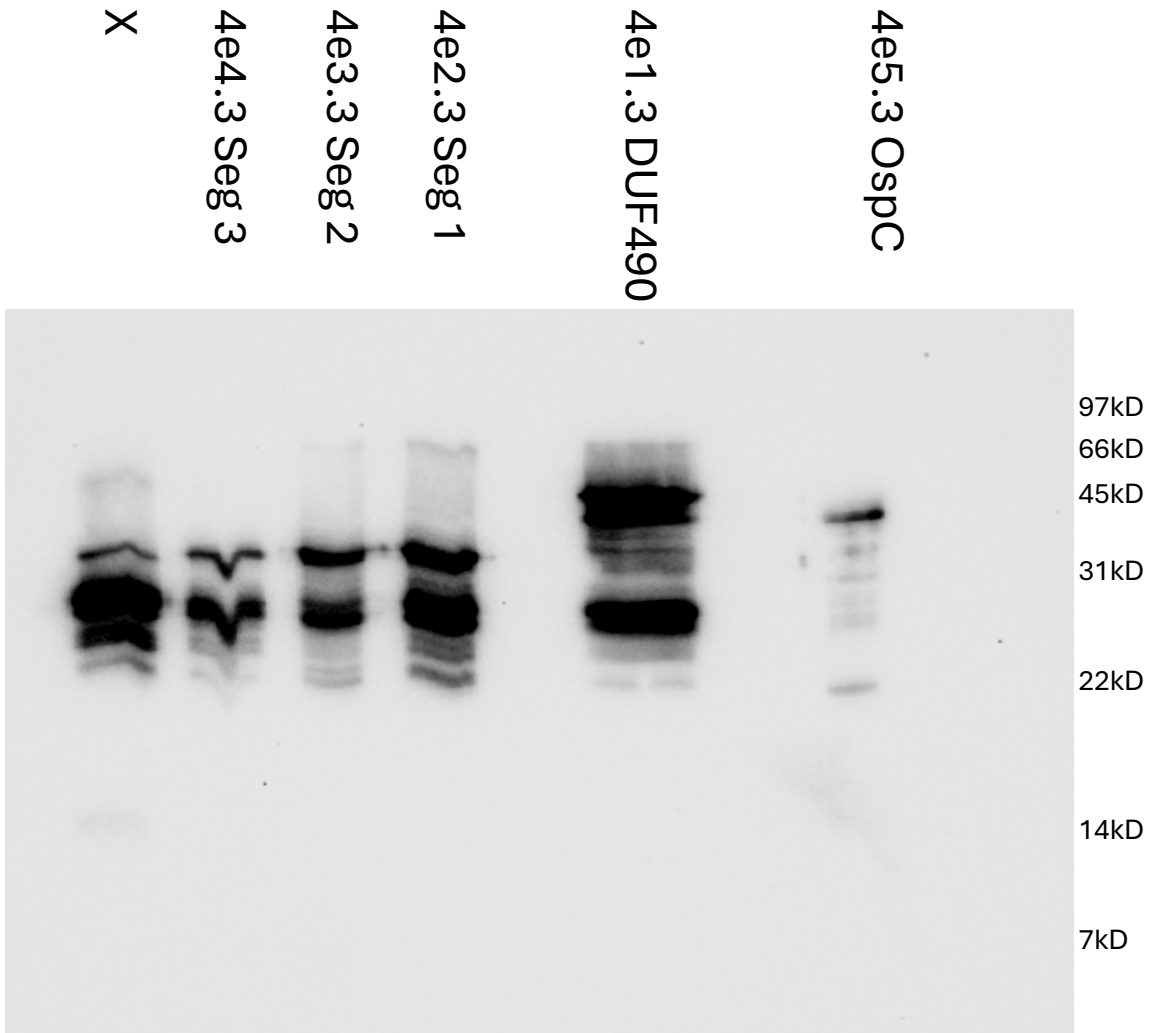
## Figure 4e

4e5.2 Ospc  
4e1.2 DUF490  
4e2.2 Seg 1  
4e3.2 Seg 2  
4e4.2 Seg 3  
X



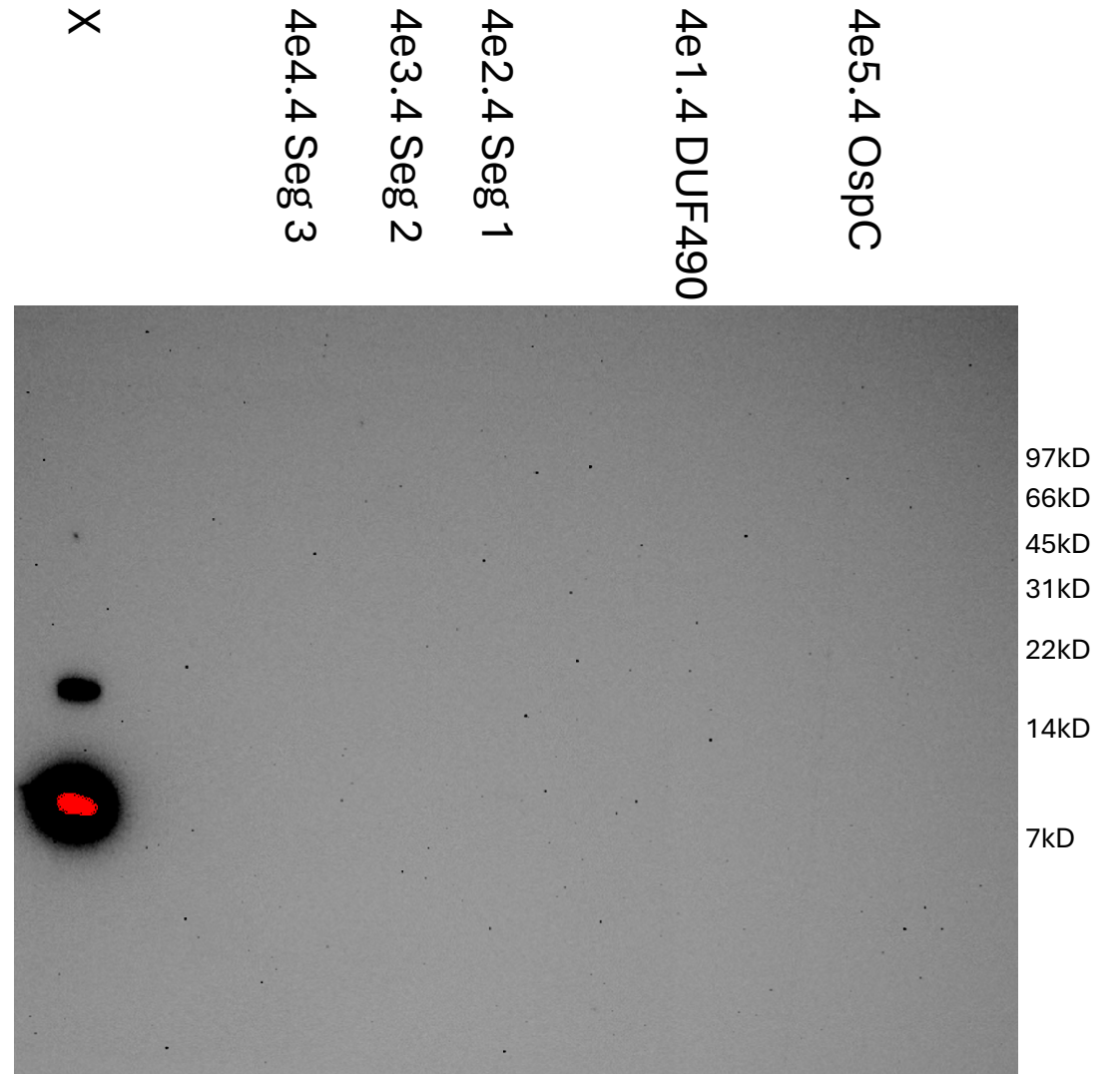
# BbBamA POTRA5 Purification anti-GST

## Figure 4e



# BbBamA POTRA5 Purification anti-His

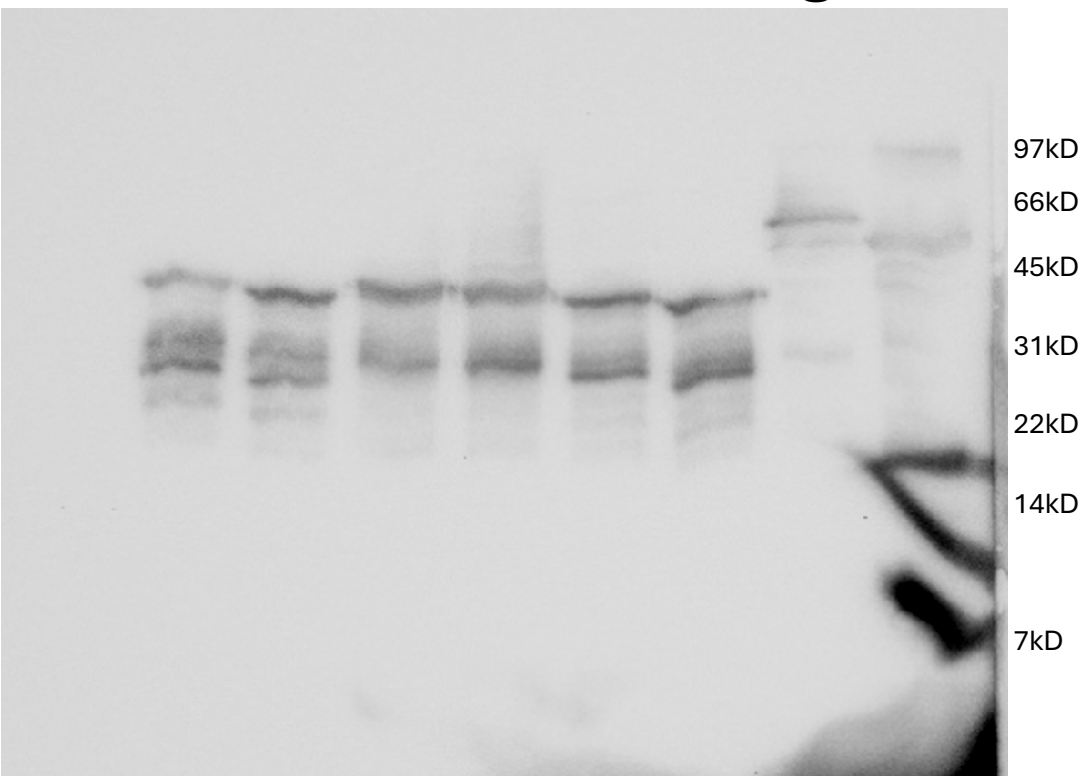
## Figure 4e



### BbBamB WCL anti-GST

#### Figure 5a

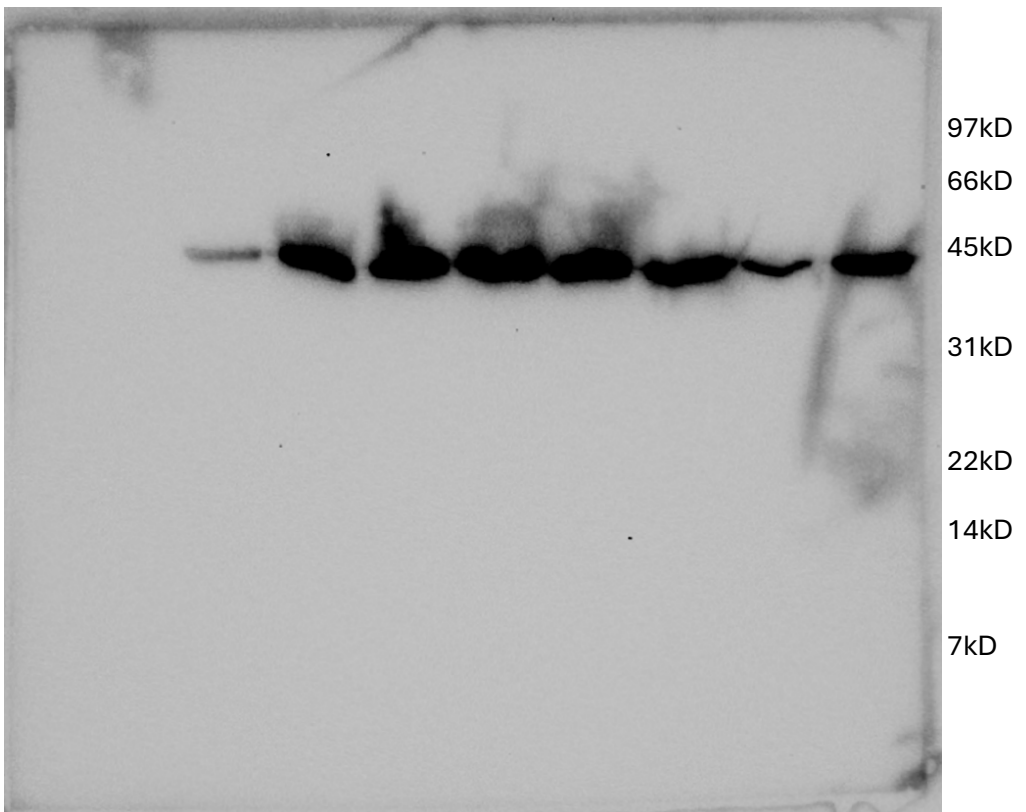
5a5.1 OspC  
5a1.1 DUF490  
5a2.1 Seg 1  
X  
5a3.1 Seg 2  
5a4.1 Seg 3  
X



### BbBamB WCL anti-His

#### Figure 5a

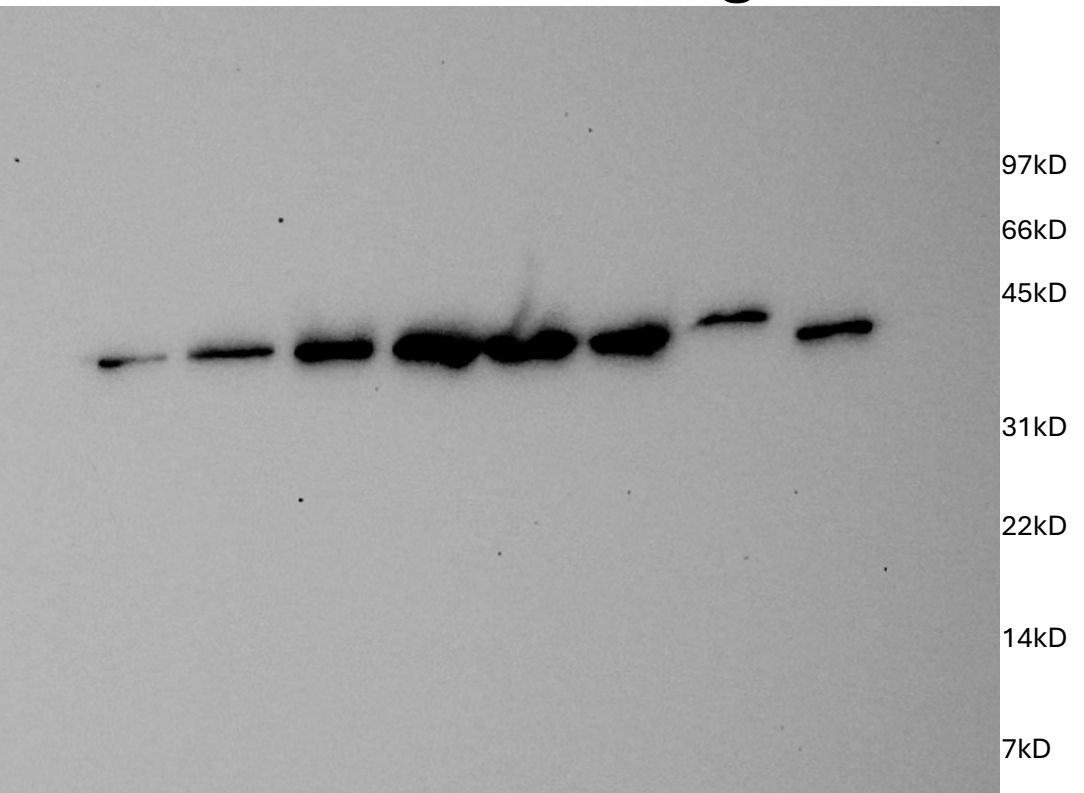
5a5.2 OspC  
5a1.2 DUF490  
5a2.2 Seg 1  
X  
5a3.2 Seg 2  
5a4.2 Seg 3  
X



# BbBamB Purification anti-His

## Figure 5a

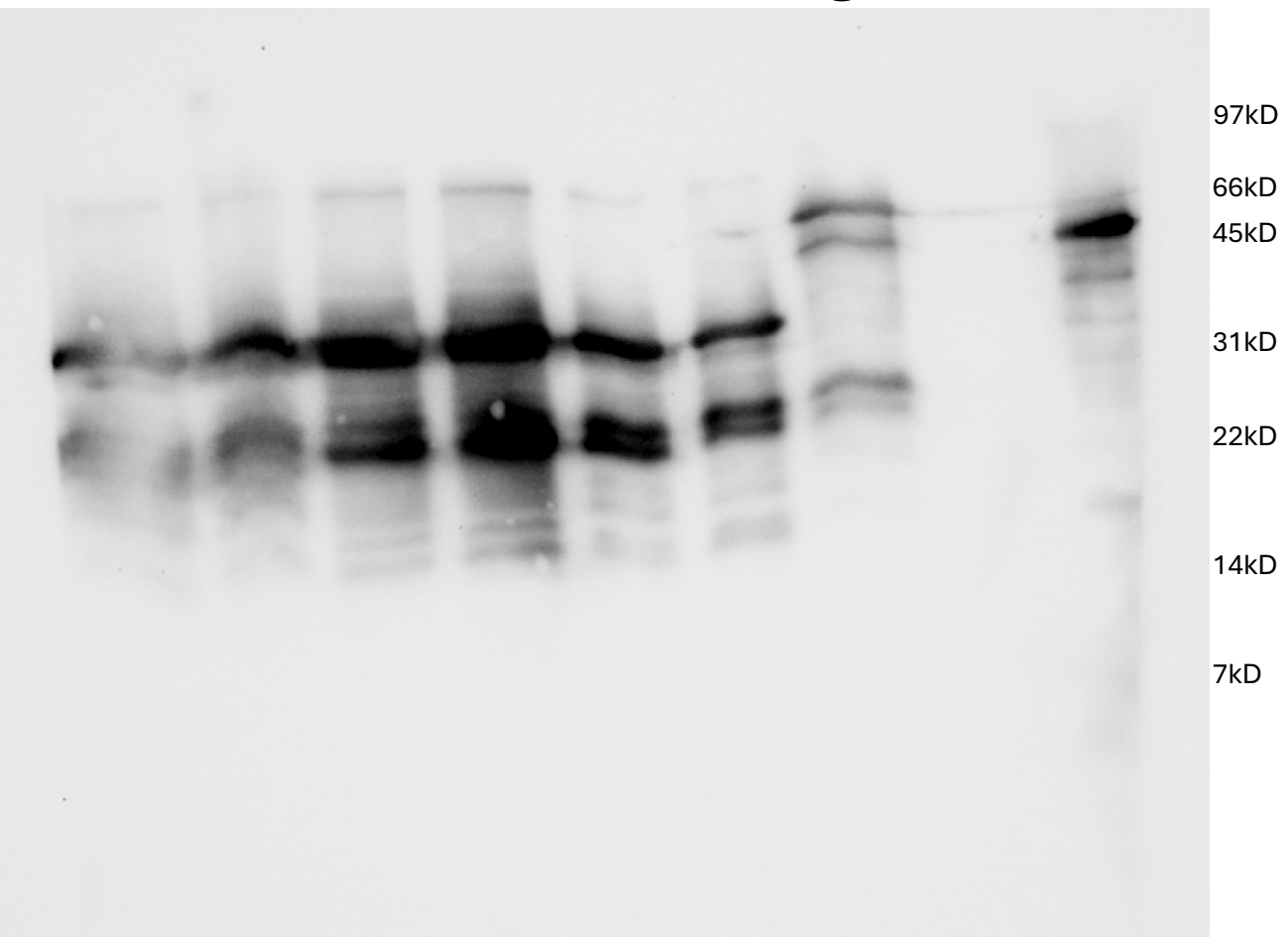
5a5.4 Ospc  
X  
5a1.4 DUF490  
5a2.4 Seg 1  
X  
X  
5a3.4 Seg 2  
X  
5a4.4 Seg 3  
X



# BbBamB Purification anti-GST

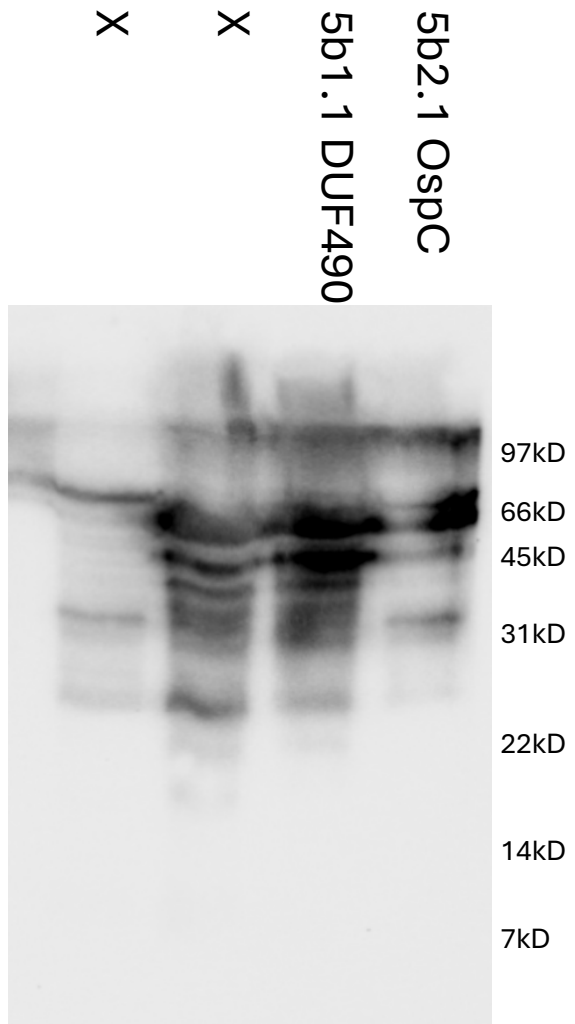
## Figure 5a

5a5.3 Ospc  
5a1.3 DUF490  
5a2.3 Seg 1  
X  
5a3.3 Seg 2  
X  
5a4.3 Seg 3  
X



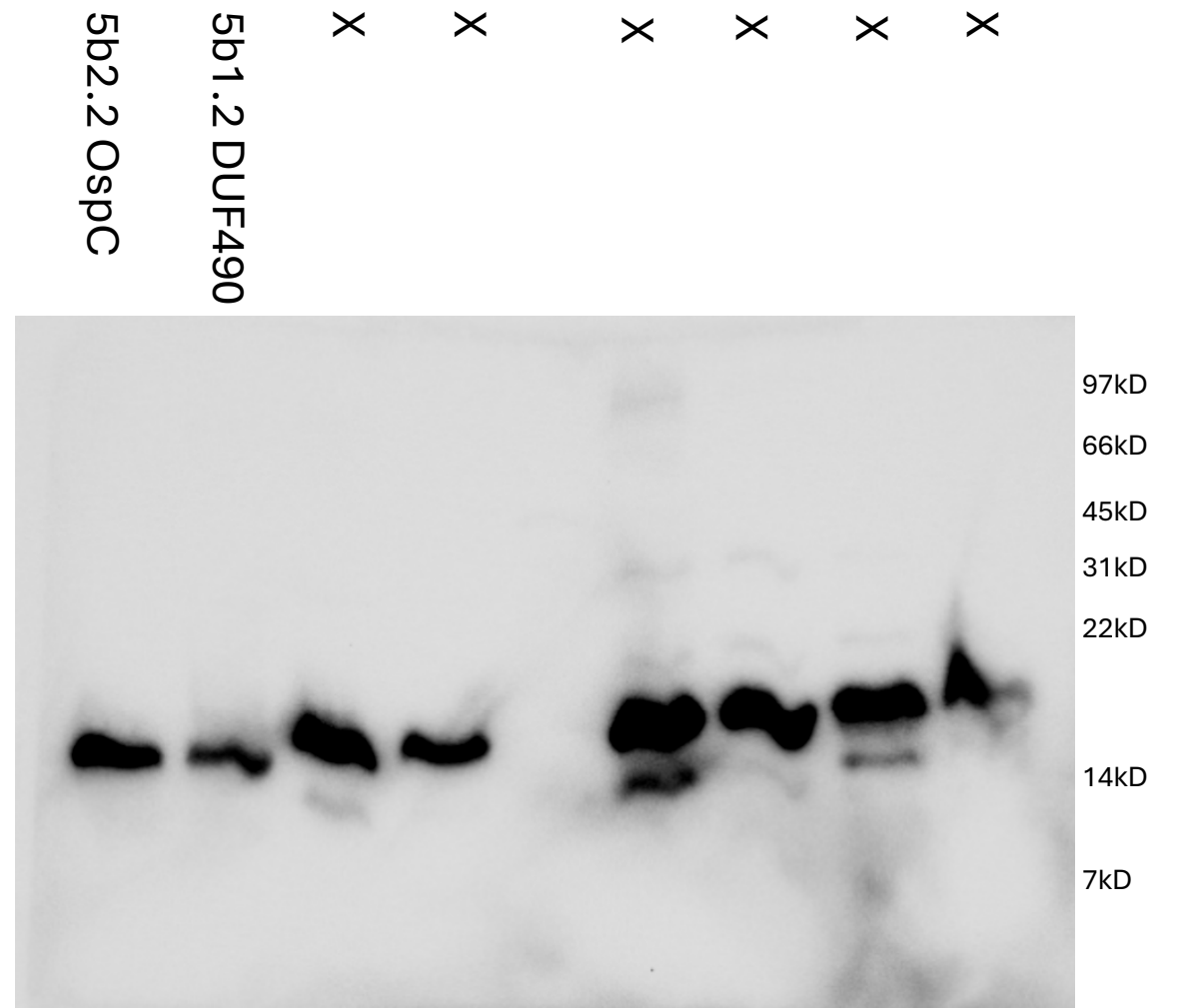
### BbBamD WCL anti-GST

Figure 5b



### BbBamD WCL anti-His

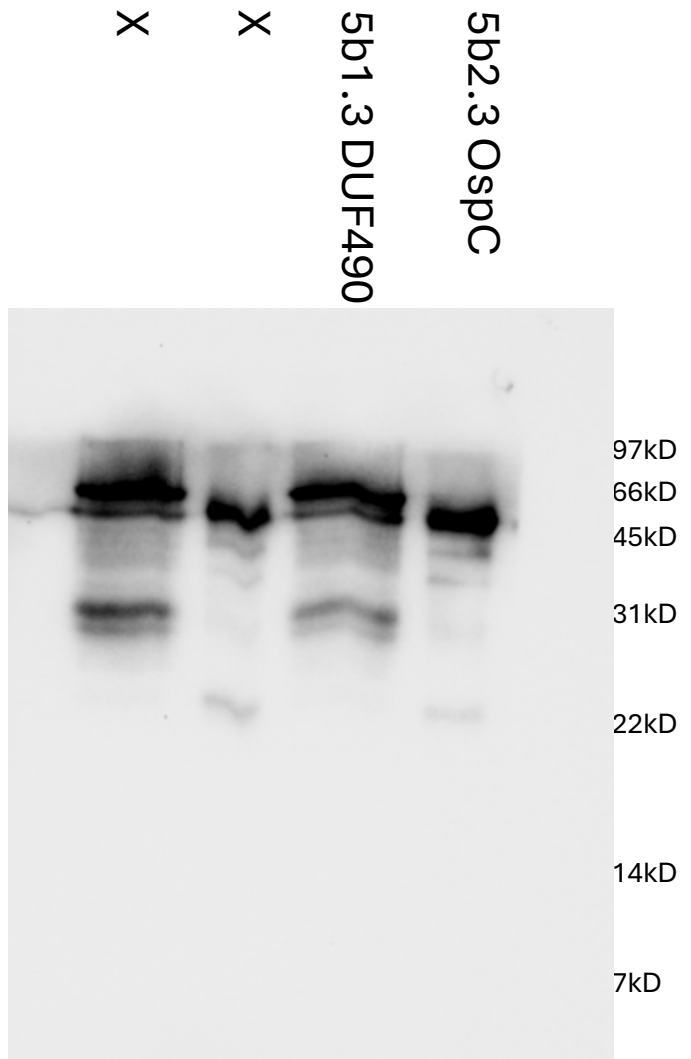
Figure 5b





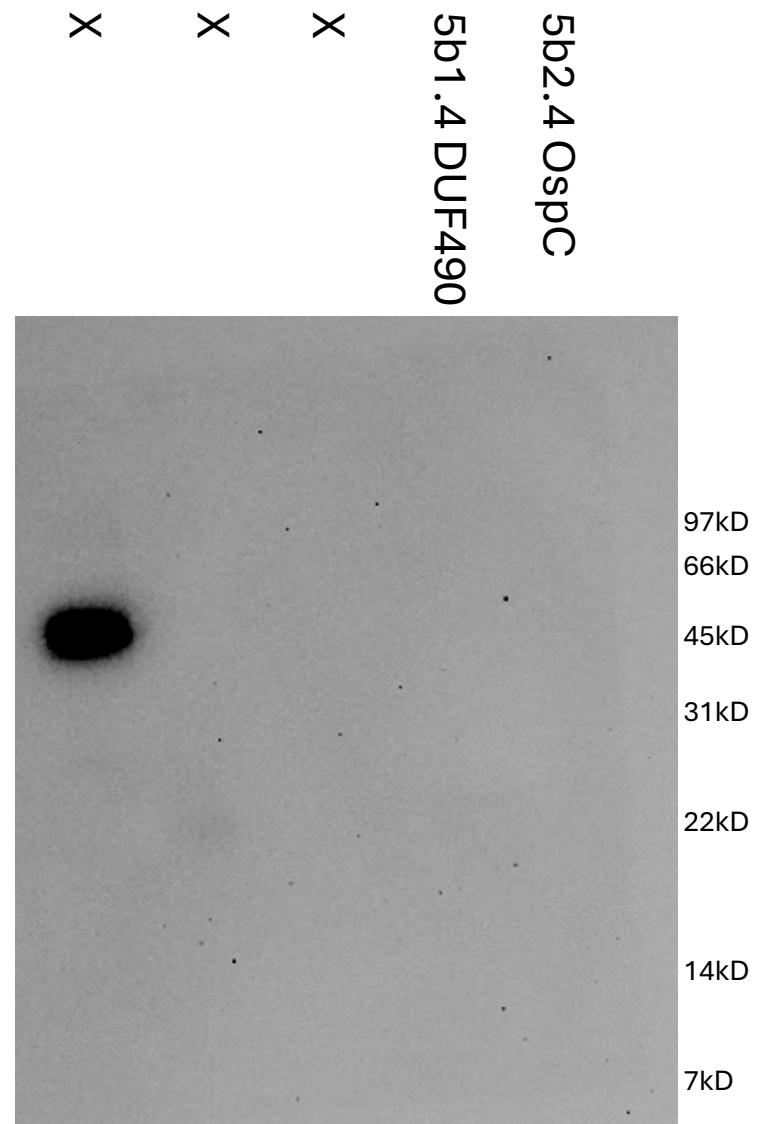
# BbBamD Purification anti-GST

## Figure 5b



# BbBamD Purification anti-His

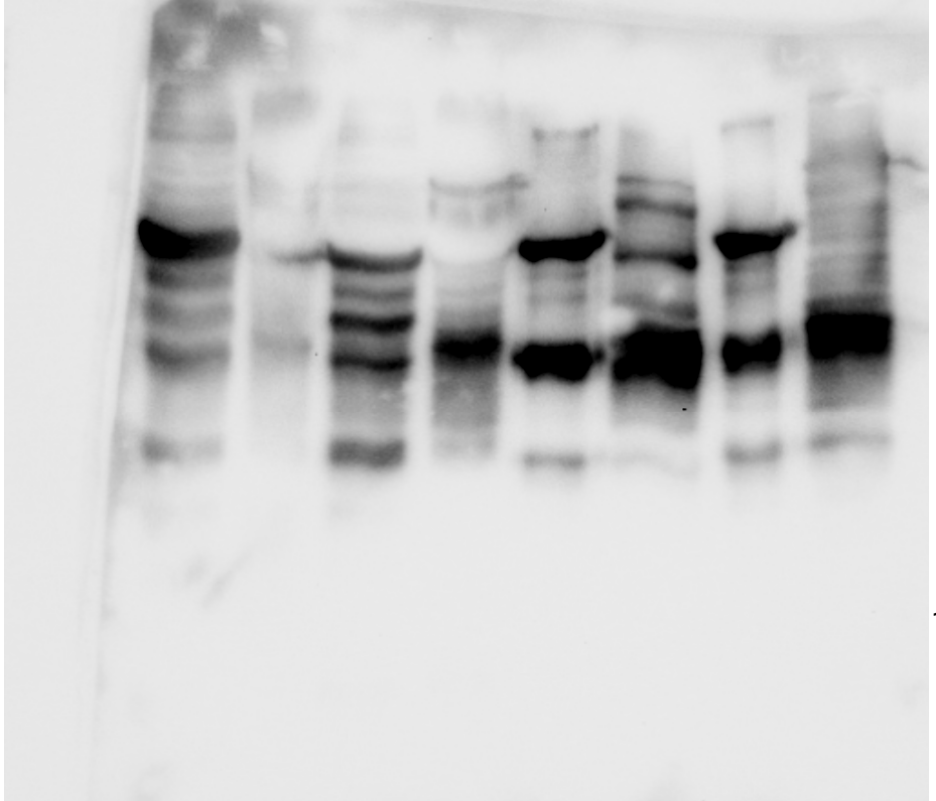
## Figure 5b



**StTamA POTRA1-3 WCL anti-GST**

**Figure 8a**

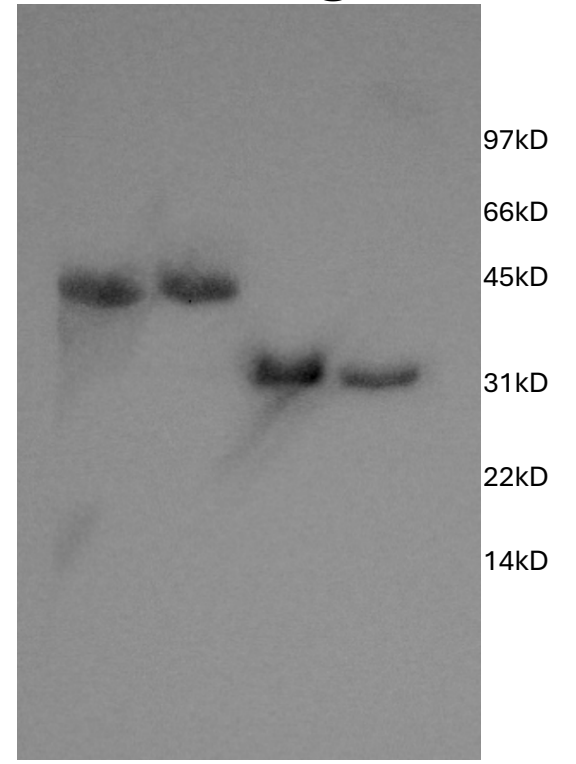
X X X X X X X  
8a1.1 StDUF490  
8a2.1 Pal



**StTamA POTRA1-3 WCL anti-His**

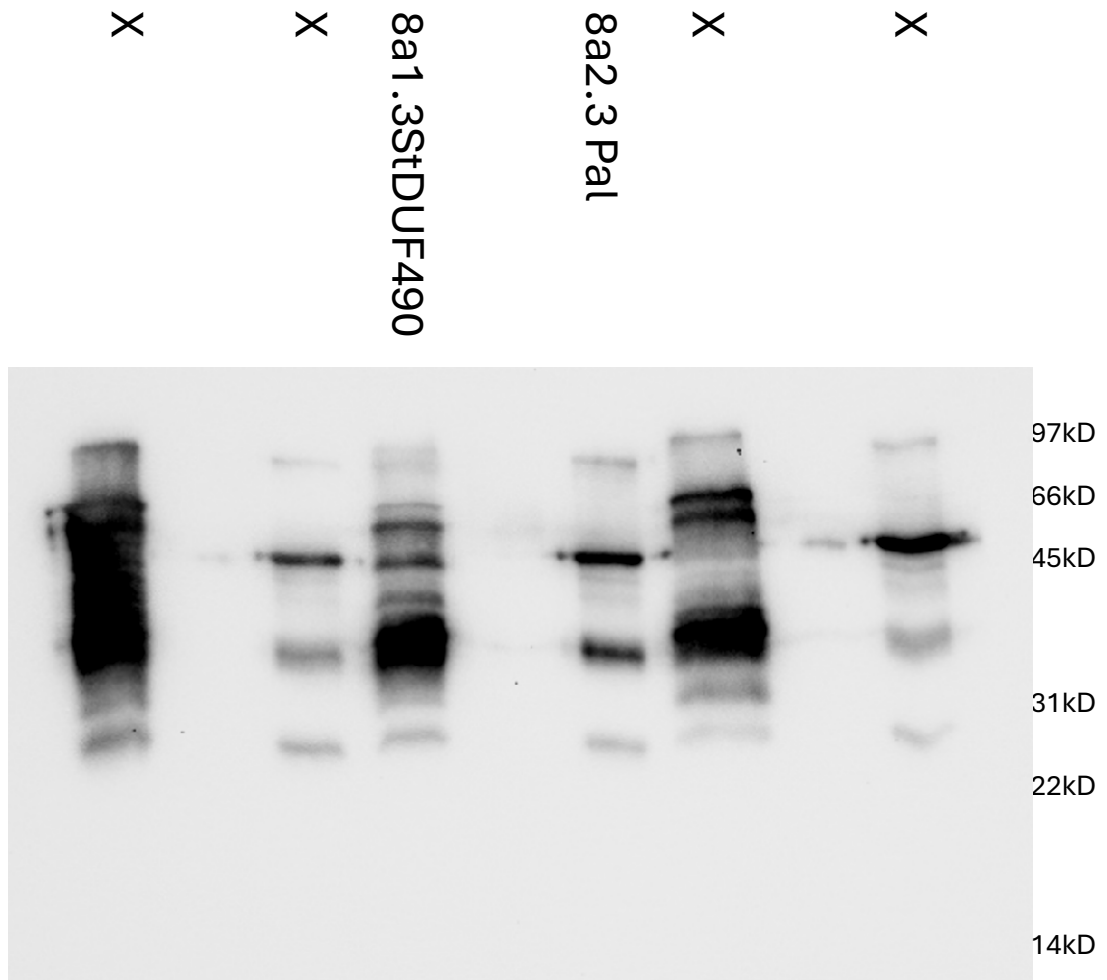
**Figure 8a**

X X  
8a1.2 StDUF490  
8a2.2 Pal



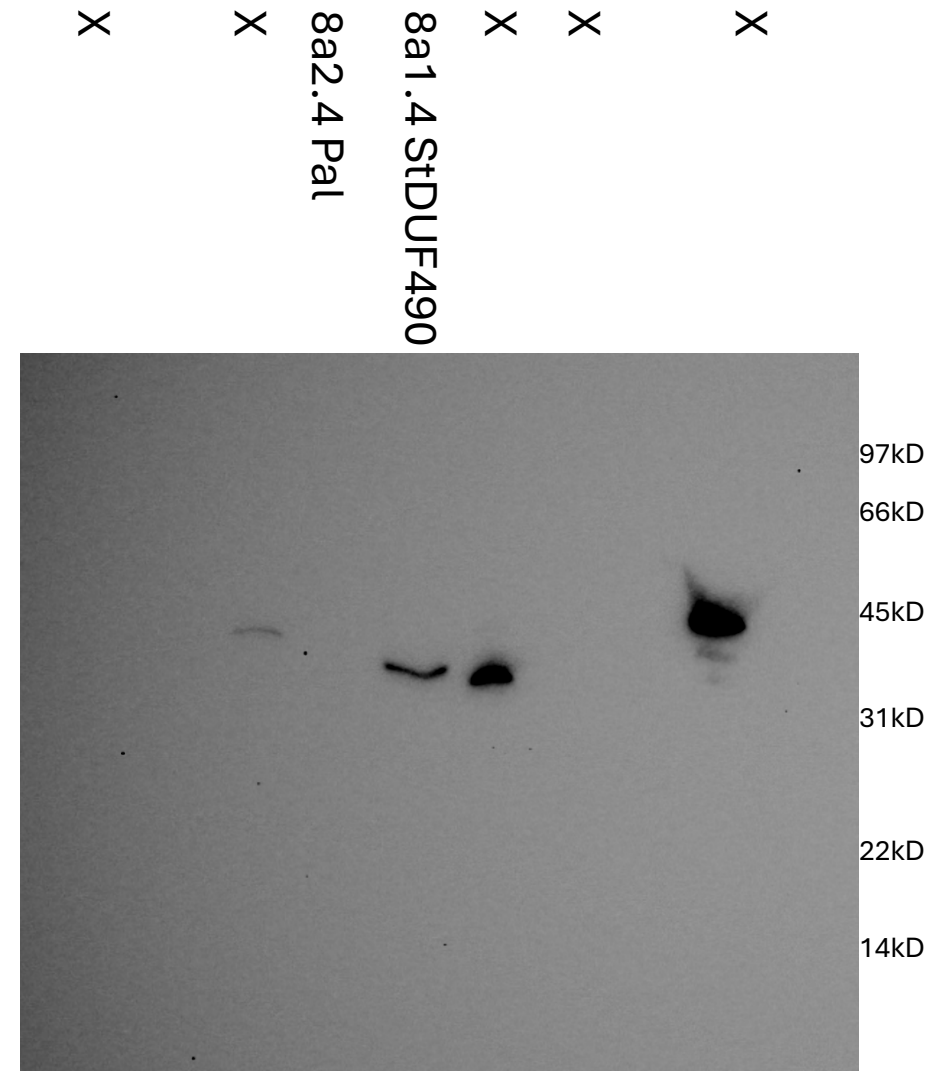
# StTamA POTRA1-3 Purification anti-GST

## Figure 8a



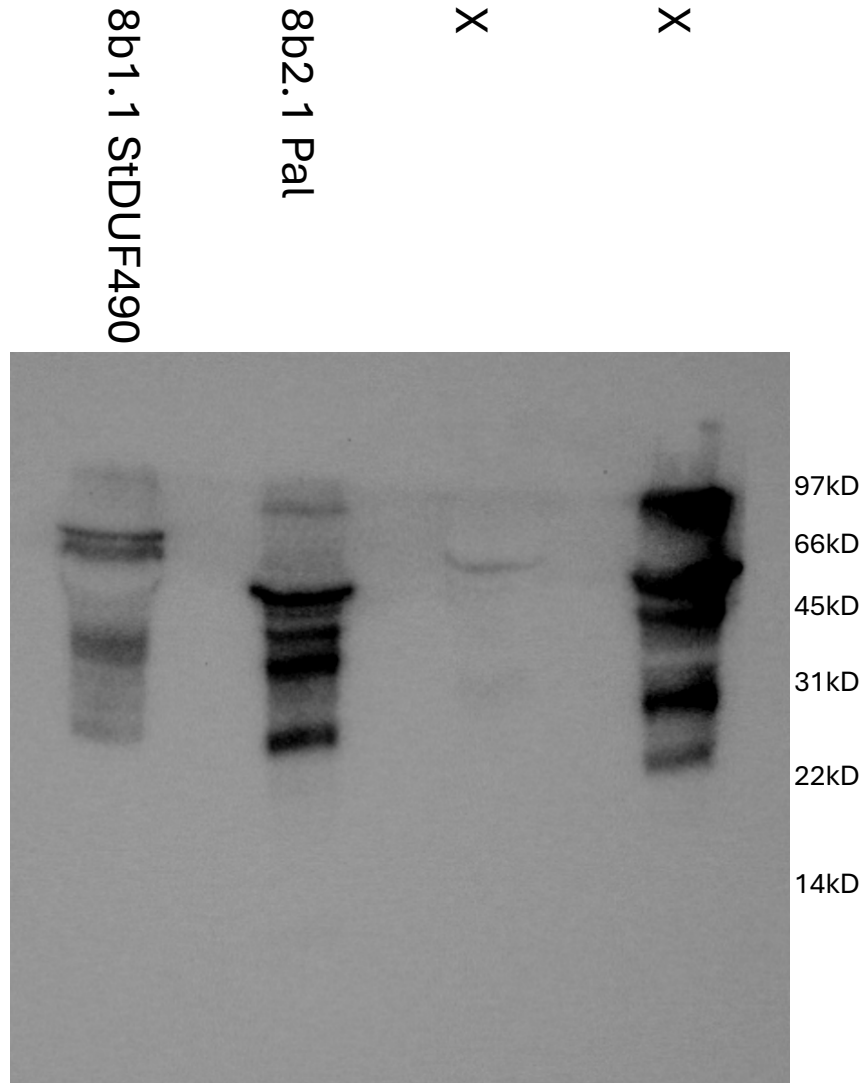
# StTamA POTRA1-3 Purification anti-His

## Figure 8a



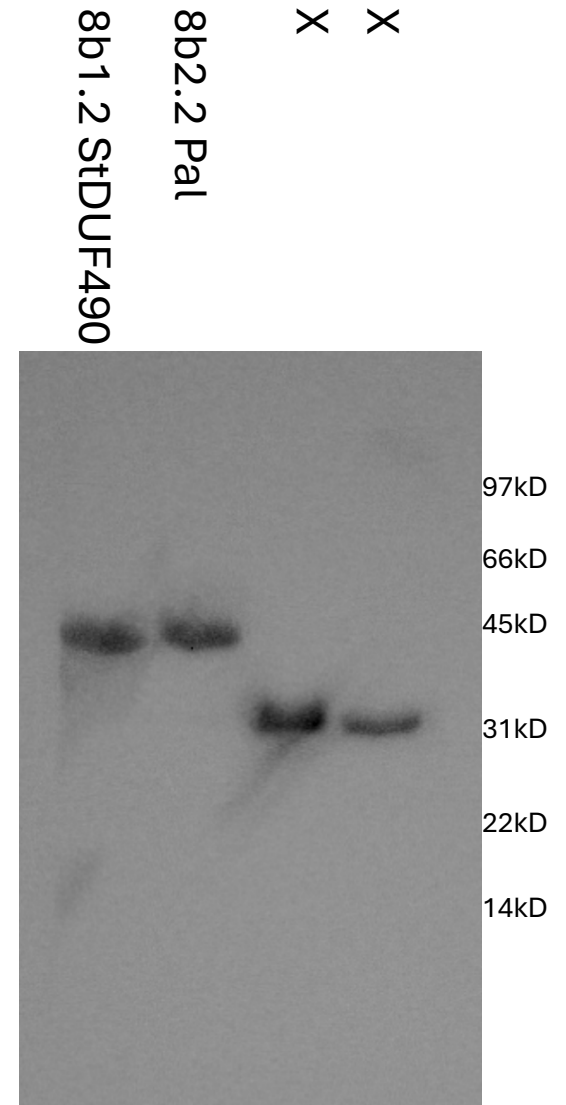
# StBamA POTRA1-5 WCL anti-GST

## Figure 8b



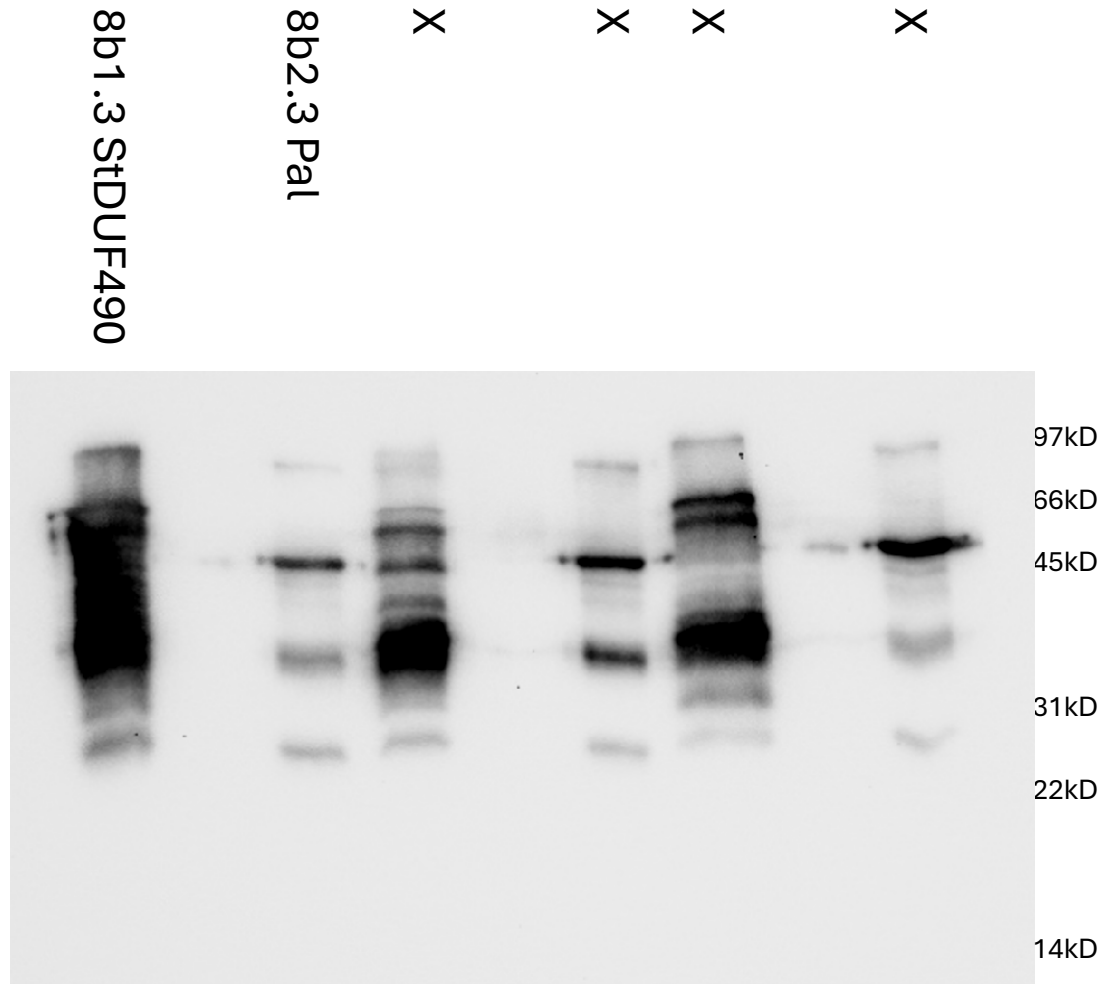
# StBamA POTRA1-5 WCL anti-His

## Figure 8b



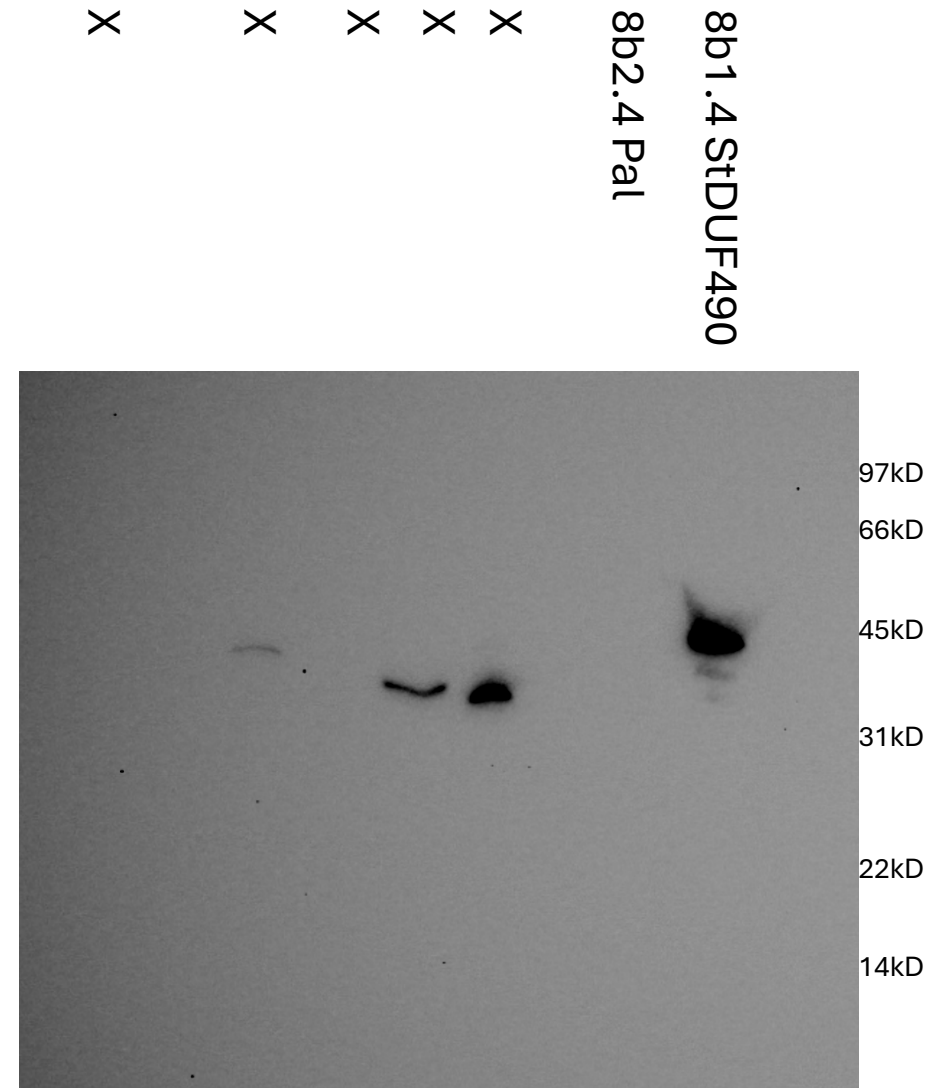
# StBamA POTRA1-5 Purification anti-GST

## Figure 8b



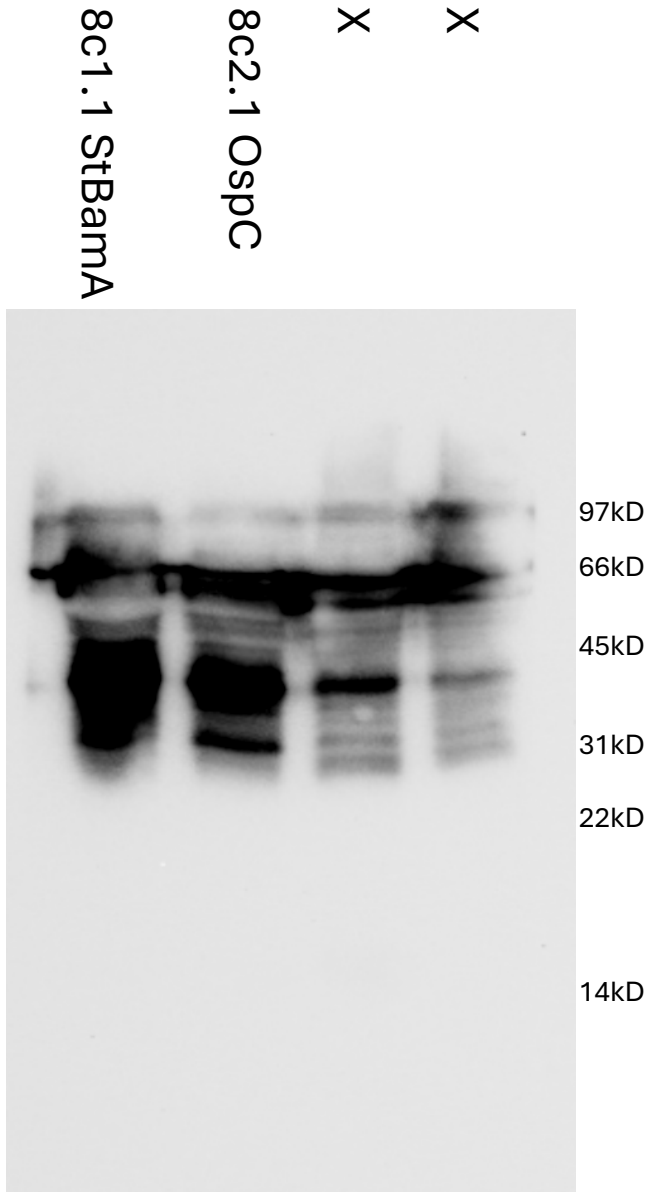
# StBamA POTRA1-5 Purification anti-His

## Figure 8b



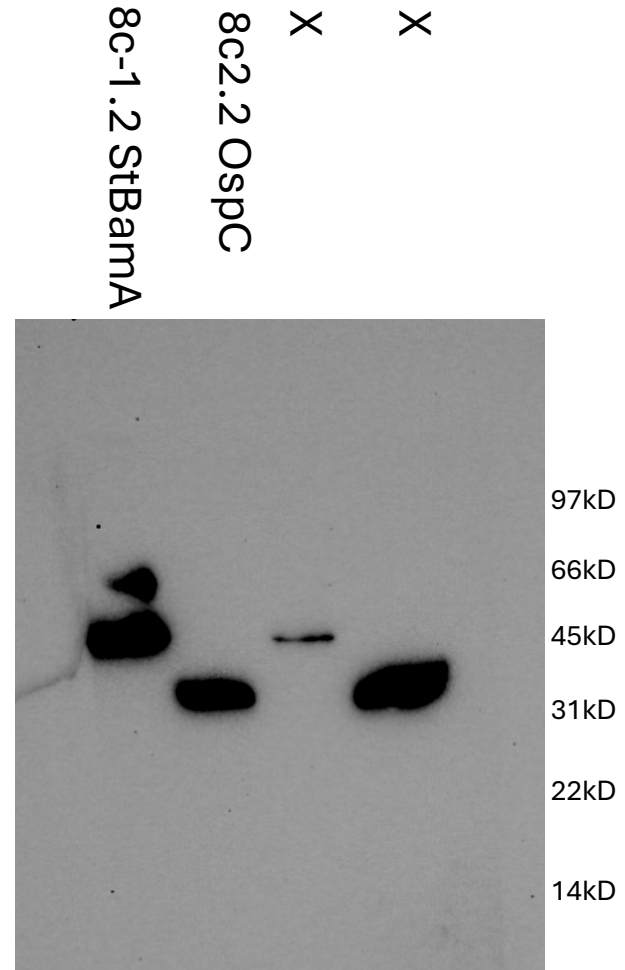
**StDUF490 WCL anti-GST**

**Figure 8c**



**StDUF490 WCL anti-His**

**Figure 8c**



# StDUF490 Purification anti-GST

## Figure 8c

8c1.3 StBamA

8c2.3 OspC

X

X

97kD  
66kD  
45kD  
31kD  
22kD  
14kD

# StDUF490 Purification anti-His

## Figure 8c

X

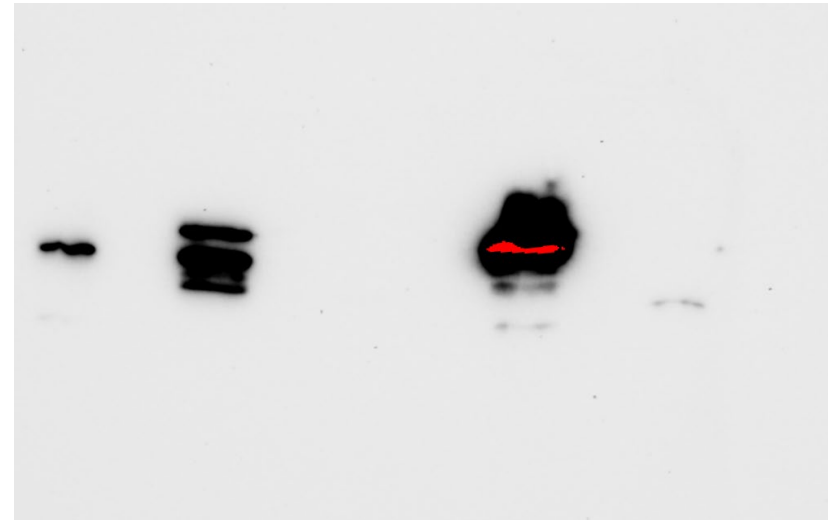
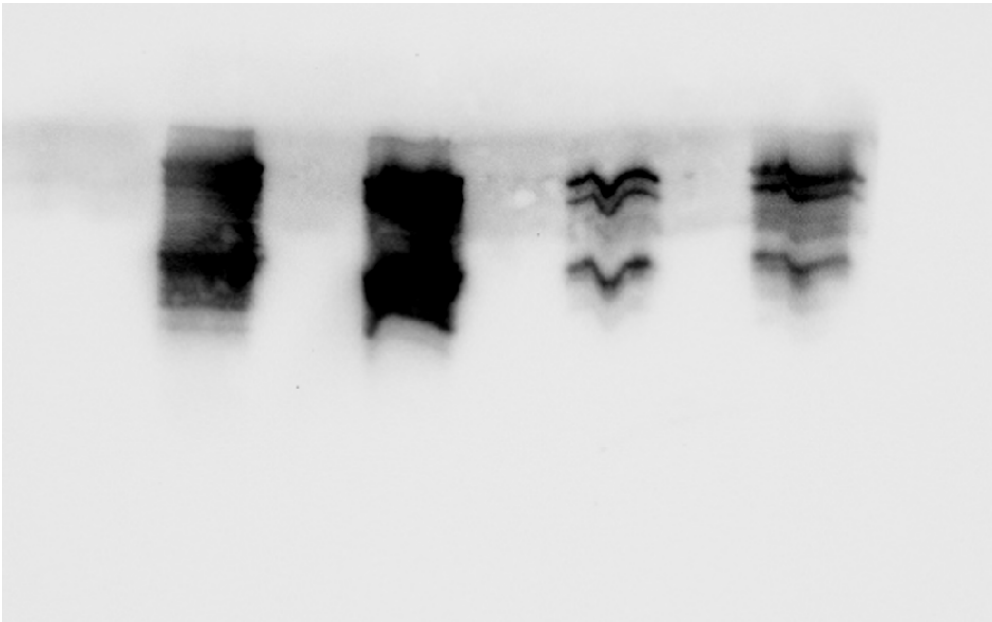
8c1.4 StBamA

8c2.4 OspC

X

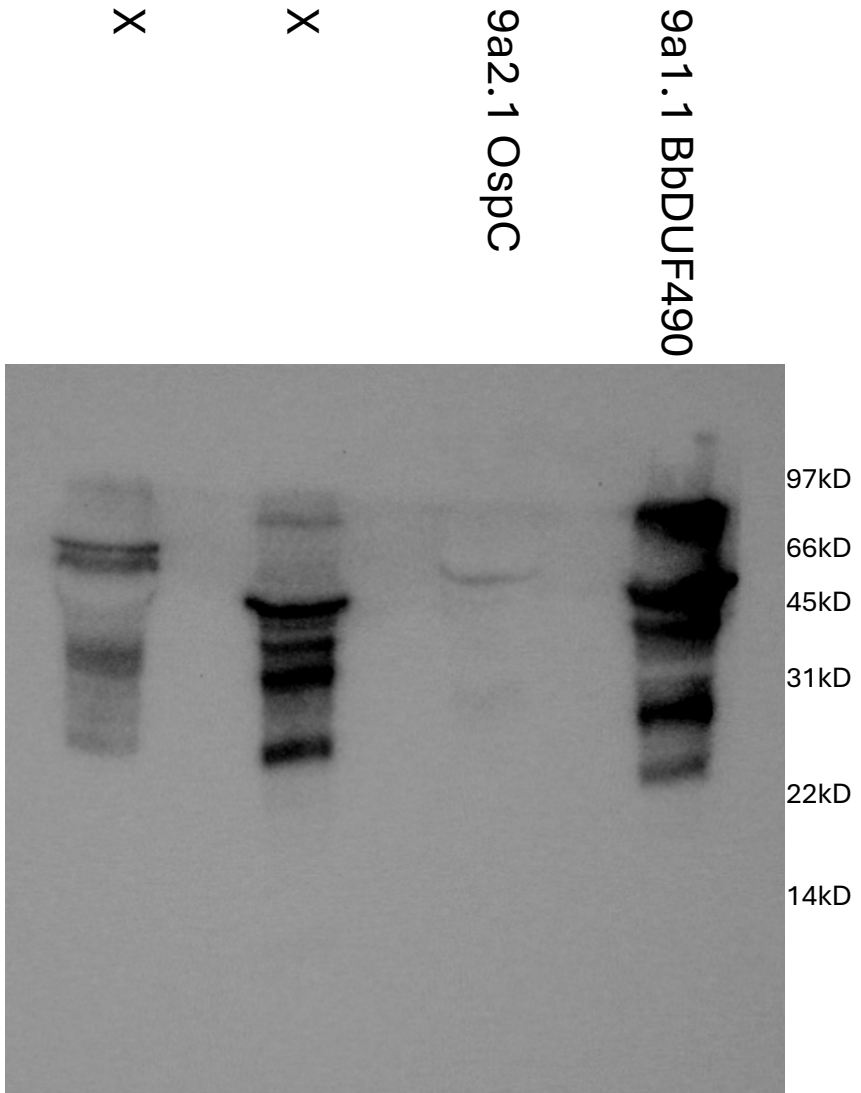
X

97kD  
66kD  
45kD  
31kD  
22kD  
14kD



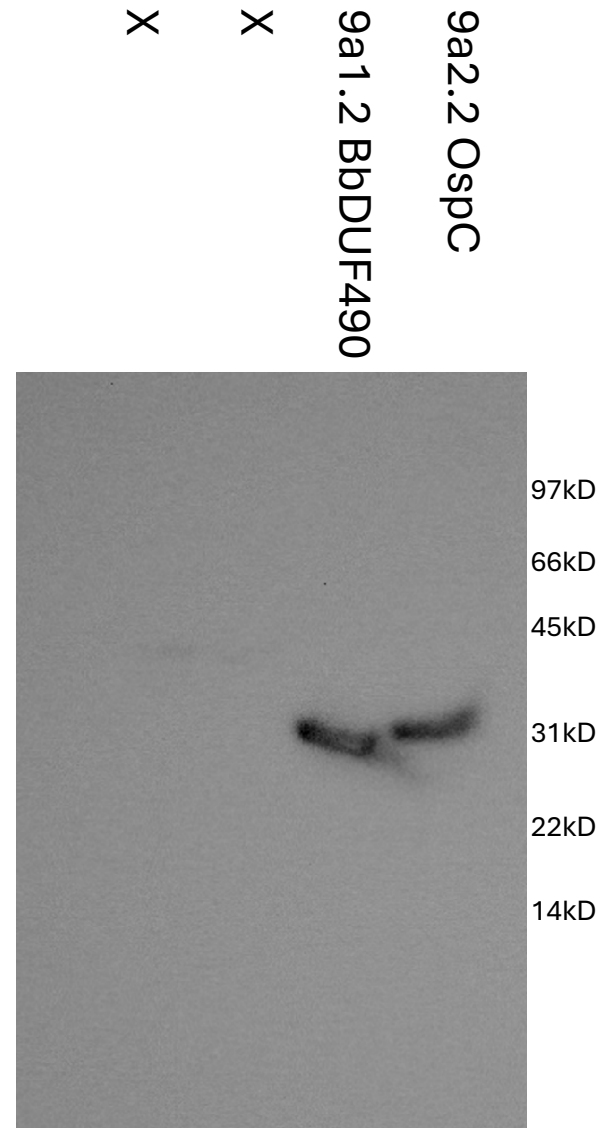
StTamA POTRA1-3 WCL anti-GST

Figure 9a



StTamA POTRA1-3 WCL anti-His

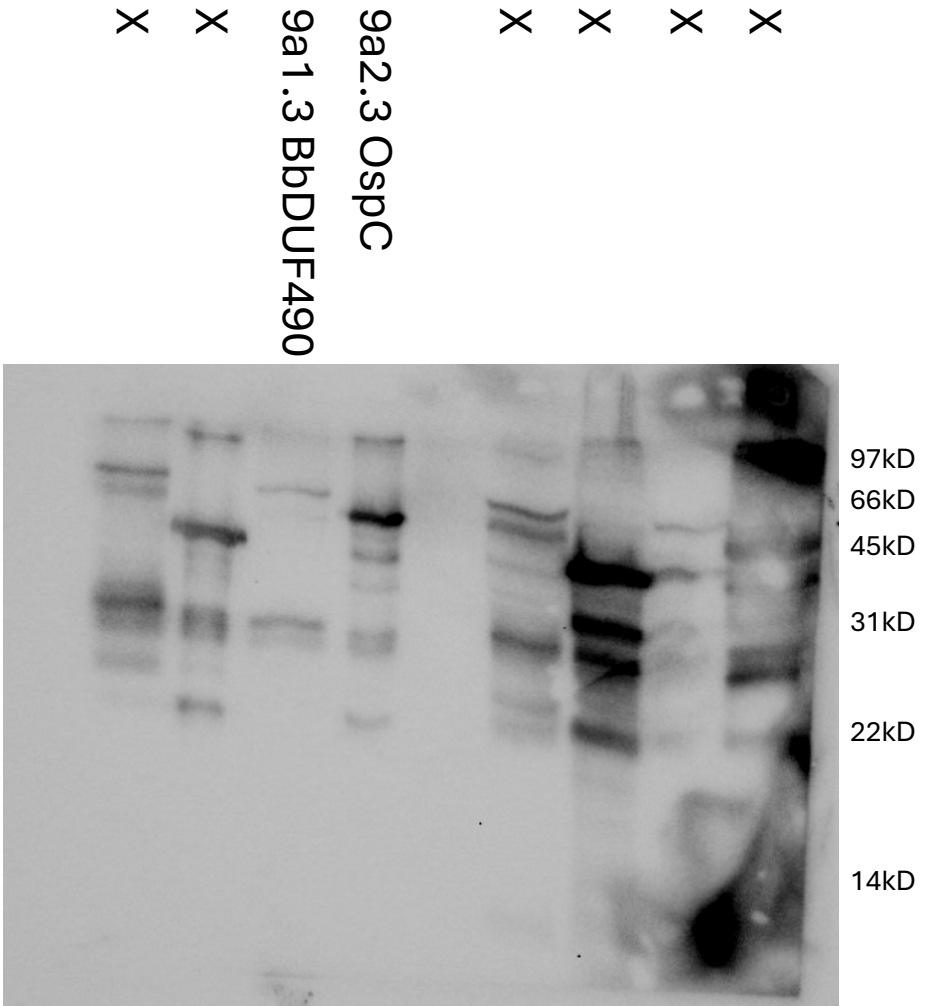
Figure 9a





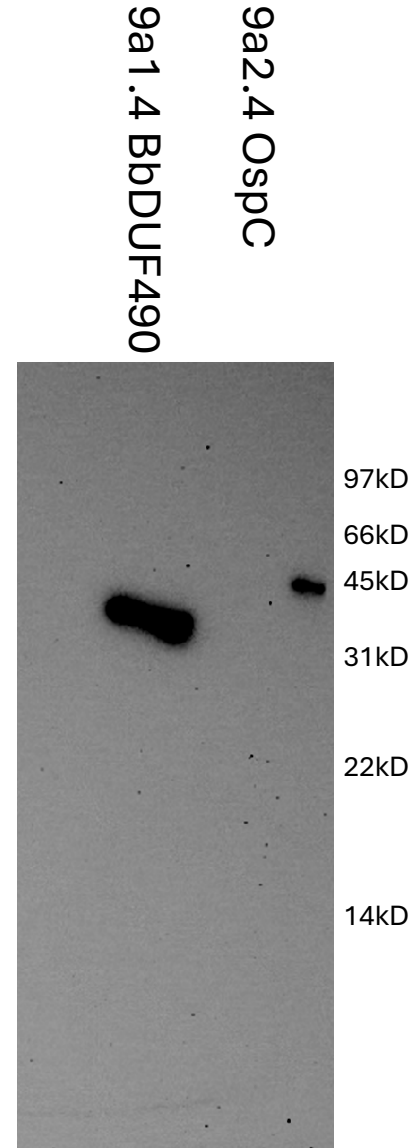
# StTamA POTRA1-3 Purification anti-GST

## Figure 9a



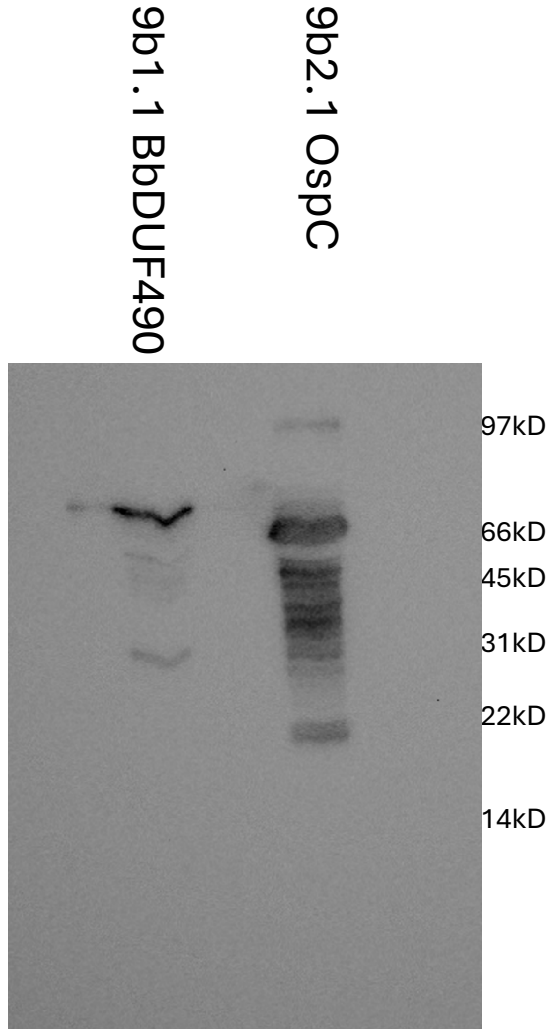
# StTamA POTRA1-3 Purification anti-His

## Figure 9a



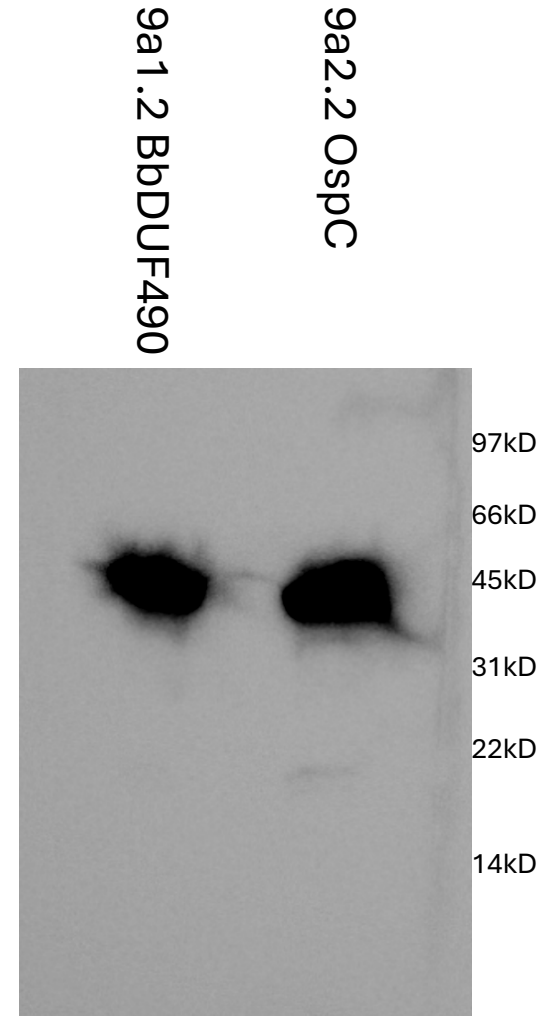
# StBamA POTRA1-5 WCL anti-GST

## Figure 9b



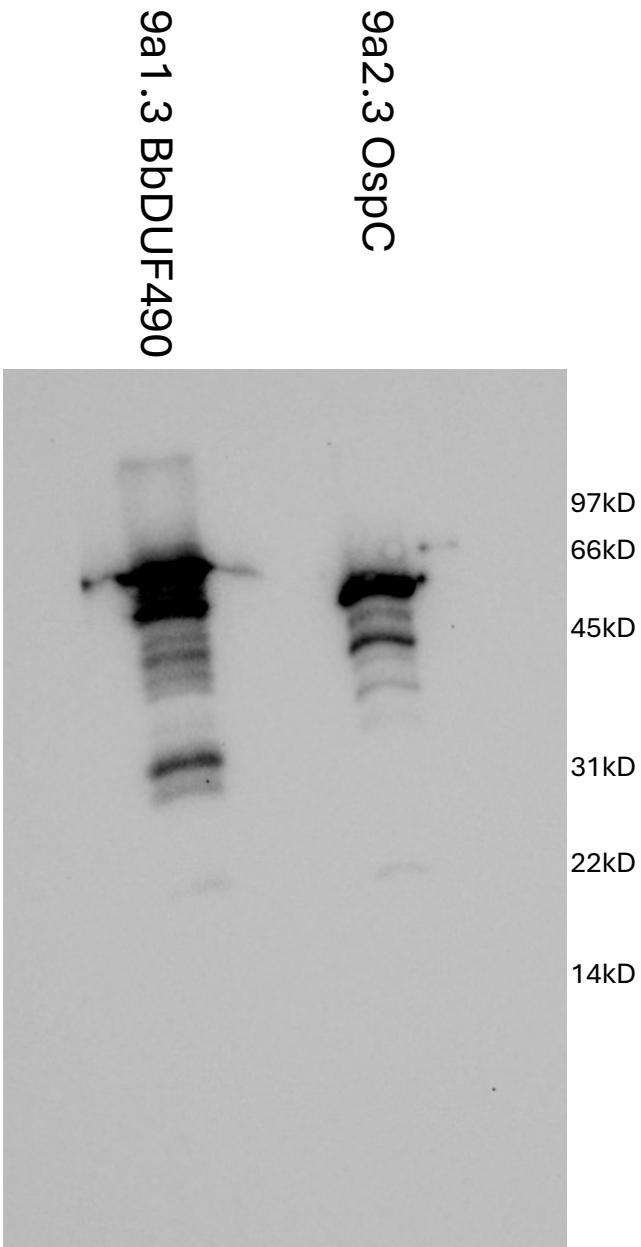
# StBamA POTRA1-5 WCL anti-His

## Figure 9b



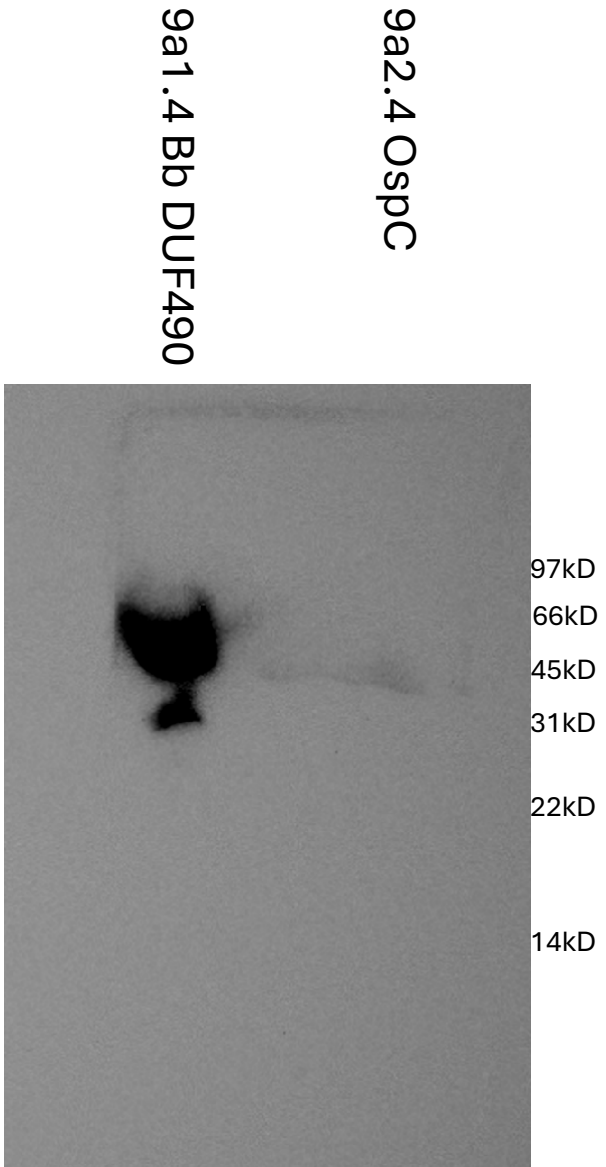
**StBamA POTRA1-5 Purification anti-GST**

**Figure 9b**



**StBamA POTRA1-5 Purification anti-His**

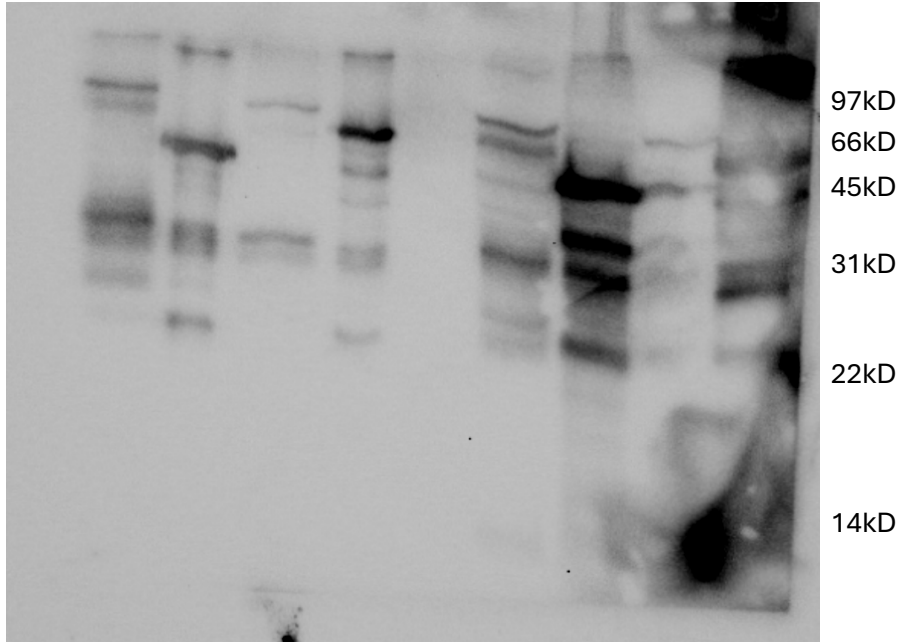
**Figure 9b**



# BbBamA POTRA1-5 WCL anti-GST

## Figure 9c

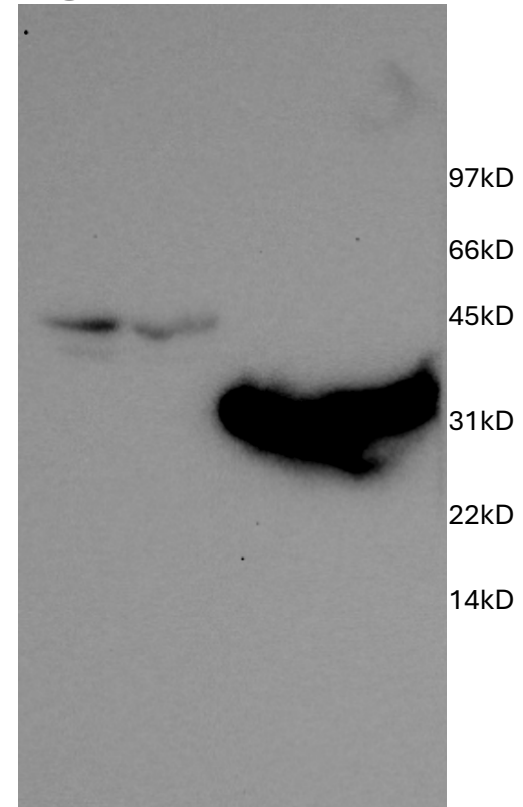
X X X X  
9c1.1 StDUf490  
9c2.1 Pal  
X X



# BbBamA POTRA1-5 WCL anti-His

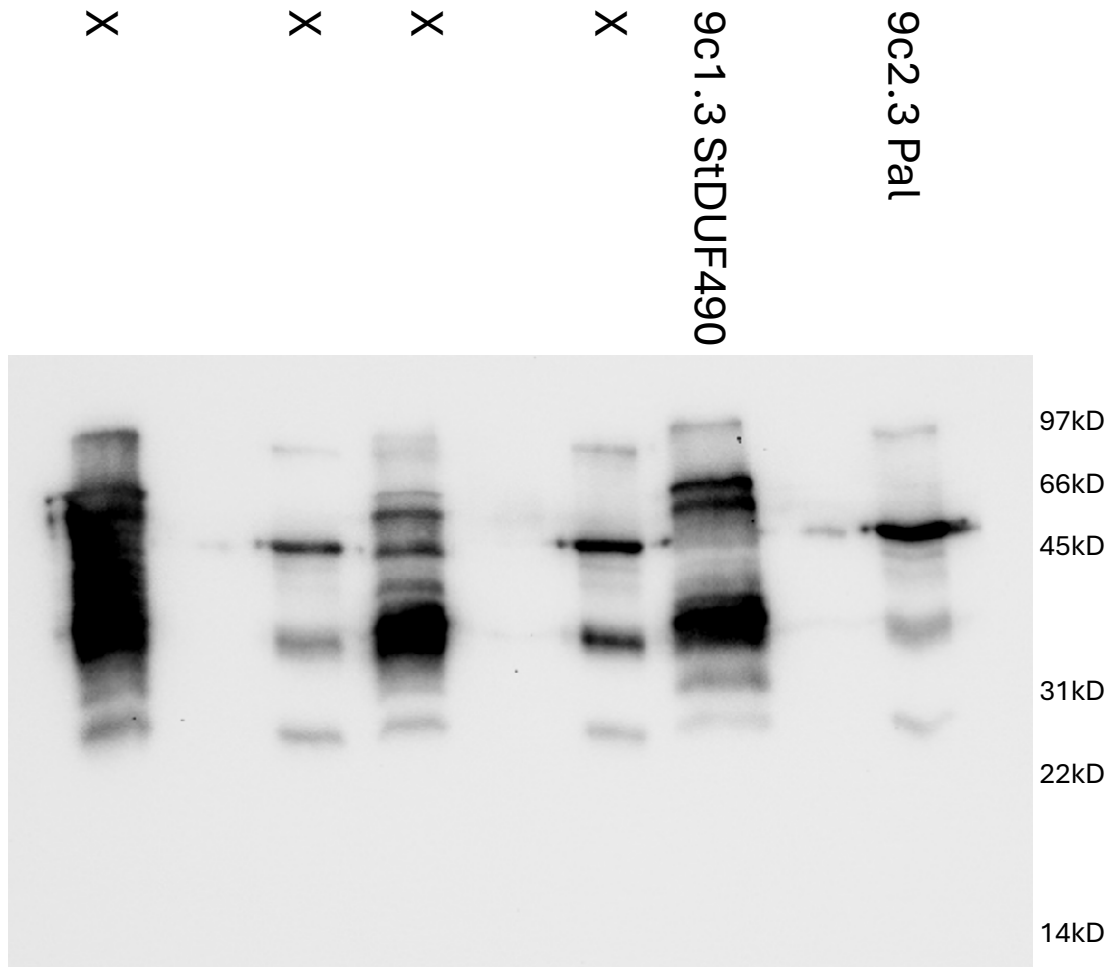
## Figure 9c

X X  
9c2.2 Pal  
9c1.2 StDUf490



# BbBamA POTRA1-5 Purification anti-GST

## Figure 9c



# BbBamAPOTRA1-5 Purification anti-His

## Figure 9c

