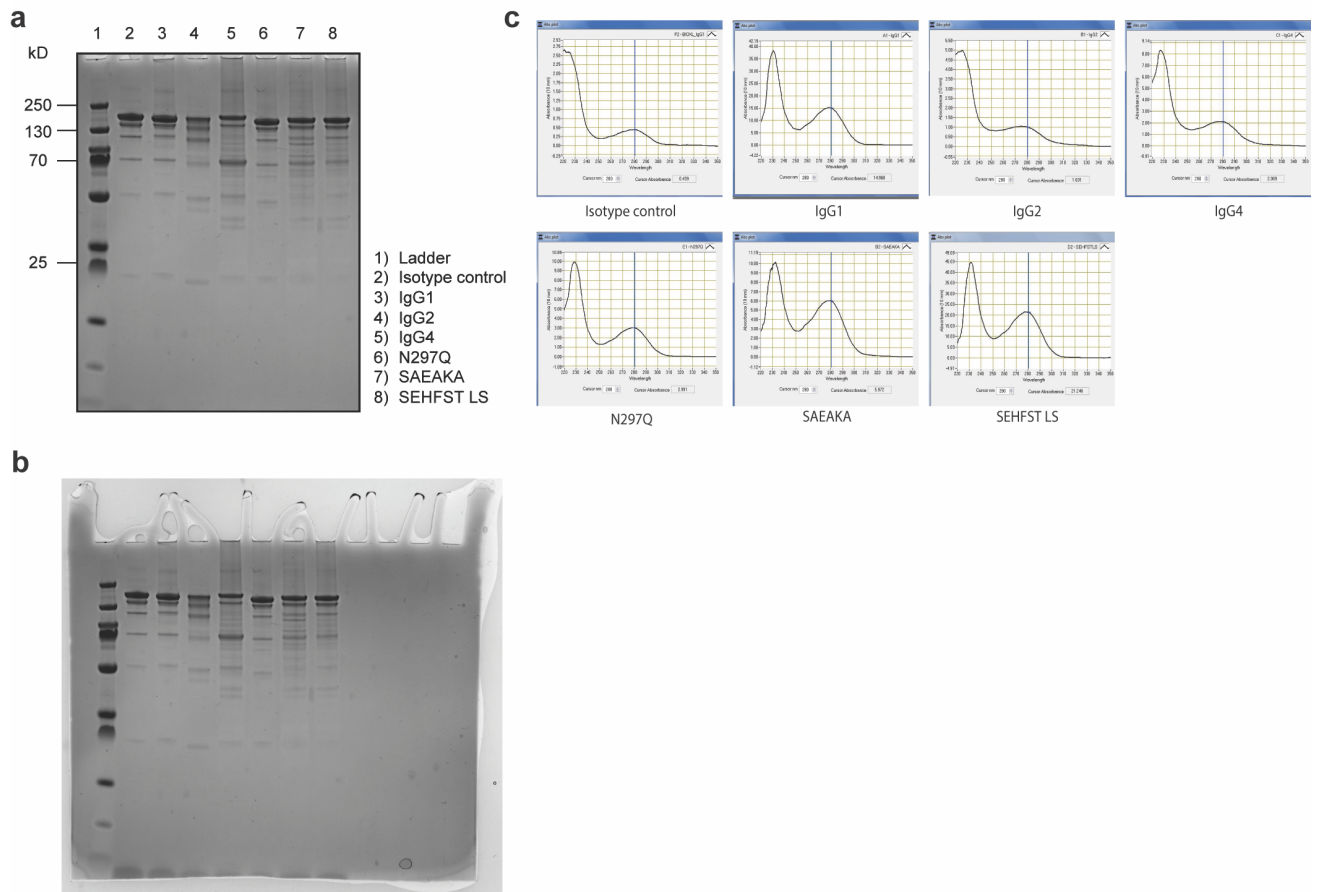


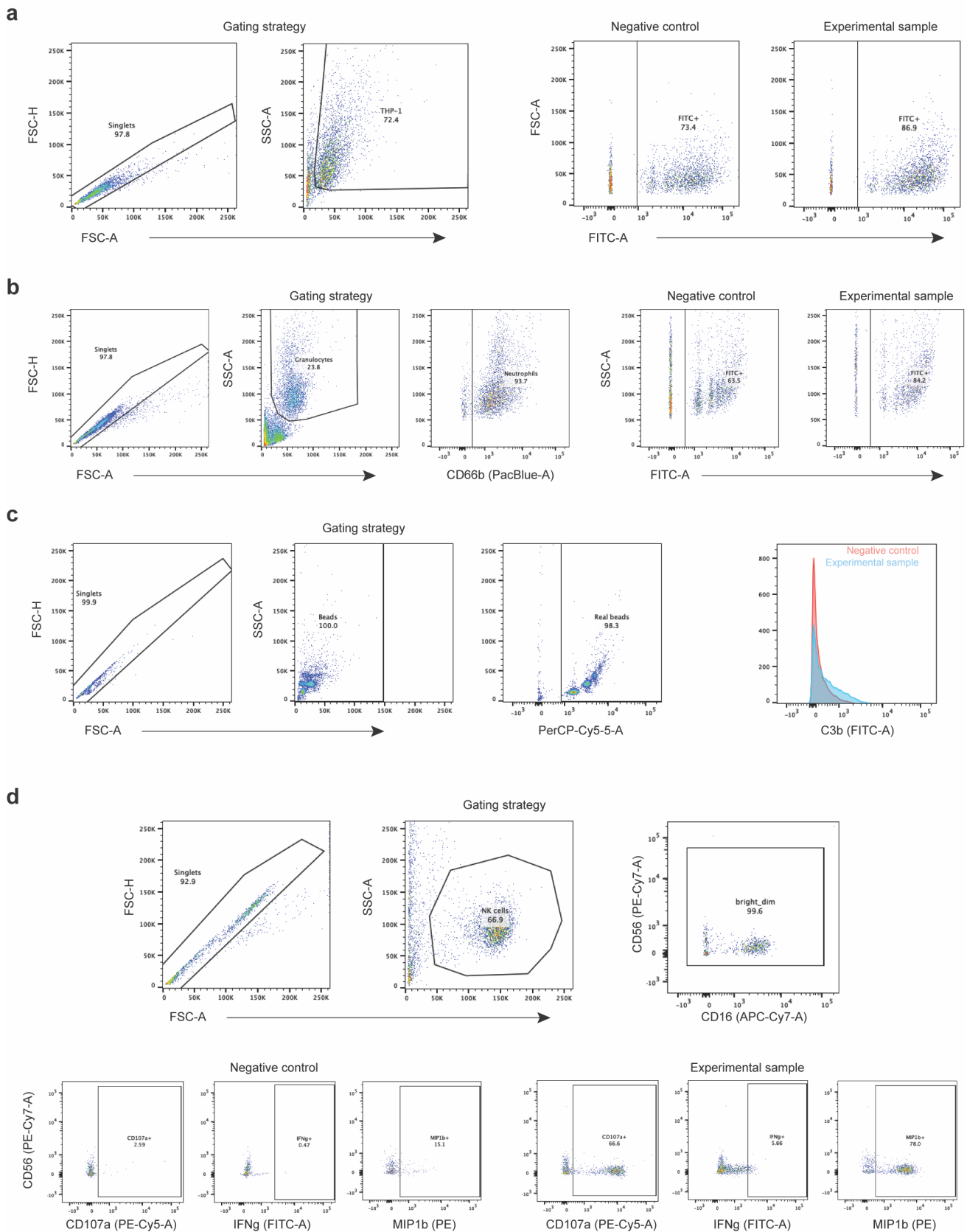


Fc-engineered antibodies promote neutrophil-dependent control of *Mycobacterium tuberculosis*

In the format provided by the
authors and unedited



Supplementary Fig. 1 | Biochemical quality of antibodies utilized in depletion experiments. a, Non-reducing gel analysis performed once on a batch of 24c5 Fc-variants. **b,** Unprocessed non-reducing gel (source data) associated with panel a. **c,** A280 measurements of select 24c5 Fc-variants.



Supplementary Fig. 2 | Gating strategies for antibody functional assays. a, Antibody-dependent cellular phagocytosis (ADCP). **b,** Antibody-dependent neutrophil phagocytosis. **c,** Antibody-dependent complement deposition (ADCD). **d,** Antibody-dependent NK cell activation (ADNKA).