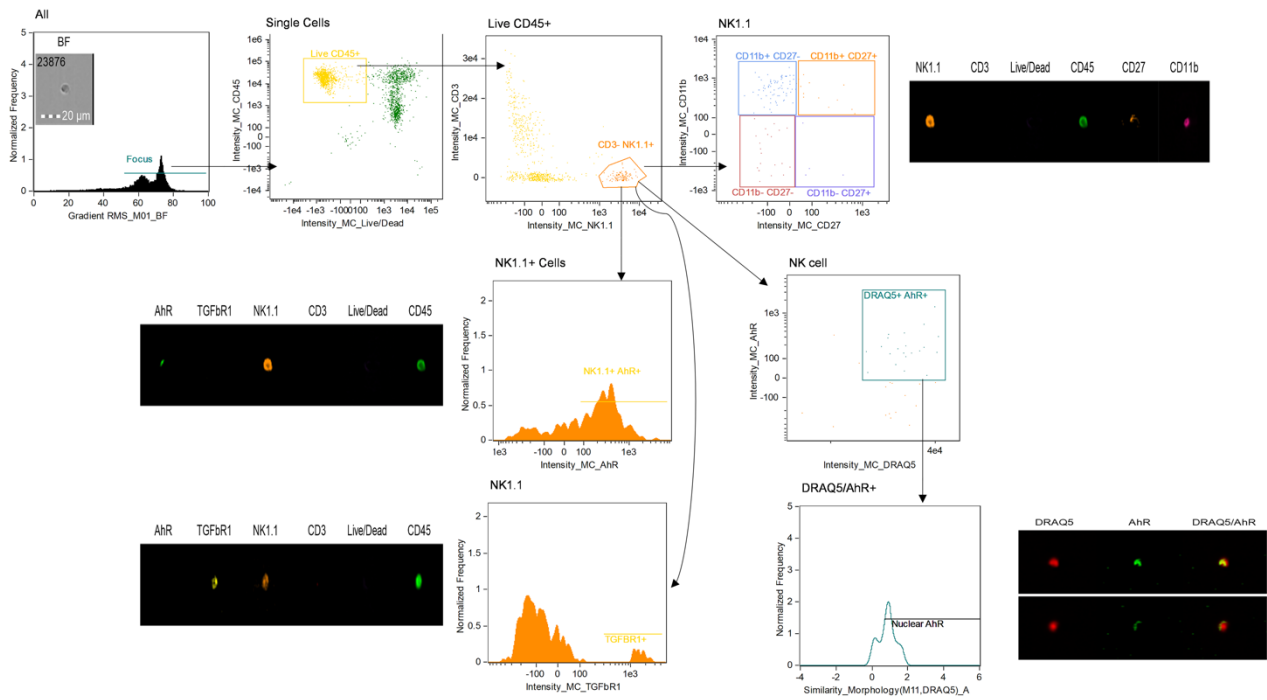
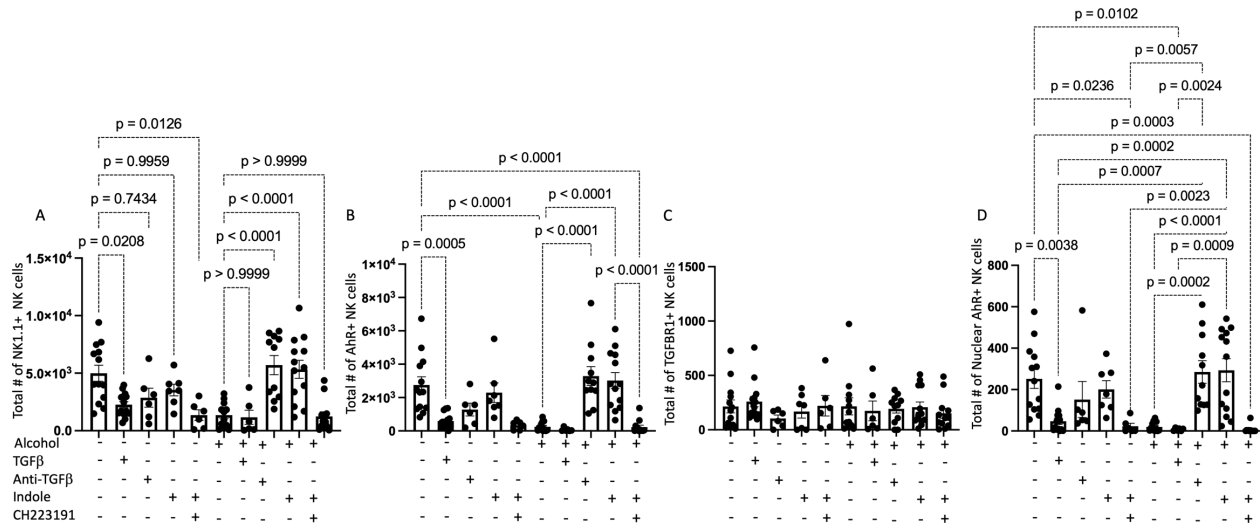


# 1 Supplemental Figure 1: Representative flow cytometry gating strategy.



2 **Supplemental Figure 2: Alcohol alters the profile of pulmonary NK cells.** The total  
 3 number of lung (A) NK1.1 cells, (D) TGF- $\beta$ R1+ NK cells, and (E) AhR+ NK cells, as well as  
 4 the total number of pulmonary NK cells with nuclear localization of AhR. p values are  
 5 indicated by one-way ANOVA with Sidak's multiple comparisons. N = 6-14 mice/group  
 6 derived from 2 independent experiments.



7 **Supplemental Figure 3: Alcohol decreases stage 4 mature pulmonary NK cells via**  
 8 **alterations in AhR and TGF- $\beta$  signaling.** The total number of pulmonary (A) stage I, (B)  
 9 stage 2, (C) stage 3 and (D) stage 4 NK cells. p values are indicated in the figure by one-way  
 10 ANOVA with Sidak's multiple comparison. N = 6-14 mice/group derived from 2 independent  
 11 experiments.

