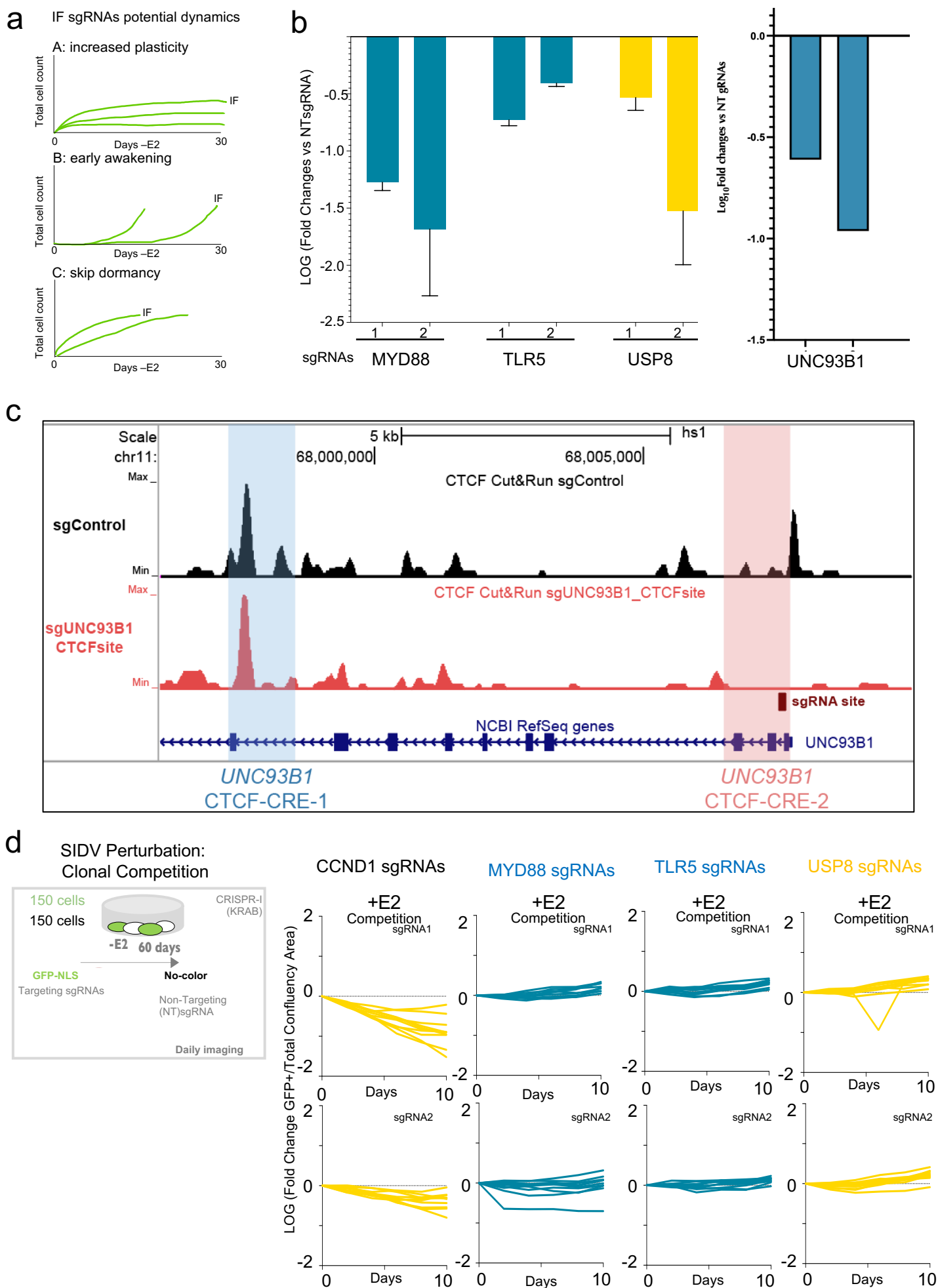


Supplementary Figure 11



Supplementary Figure 11. Validation of DF and IF SIDP hits. (a) Potential models compatible with the observed changes in sgRNA relative frequency for the TLR pathways at day 21 in the -E2 screen. Top: cells a higher proportion of cells carrying the sgRNA can enter dormancy compared to cells carrying other sgRNAs, center: cells carrying the sgRNA engage in early awakening, bottom: cells carrying the sgRNAs maintain a basal proliferative potential while failing to enter a dormant state (b) RT-qPCR validation of the effect of individual sgRNA on MCF7 transfected with a constitutive dCAS(-KRAB construct. Relative mRNA value are plotted against a non-targeting sgRNA. (c) CTCF binding profiles (by Cut&Run) in MCF7-dCas9-cells either expressing a sgRNA targeting the CTCF-binding-sites cluster at one of the two SIDP-targeted CREs of UNC93B1 (CTCF-CRE-2), or a control sgRNA. (d) CCND1 targeting sgRNAs lead to rapid extinction of GFP cells while non-targeted cells enter dormancy with normal dynamics. Green panels: absolute GFP+ count (CCND1 sgRNAs). Yellow panels: normalized ratios GFP/non GFP across time points.