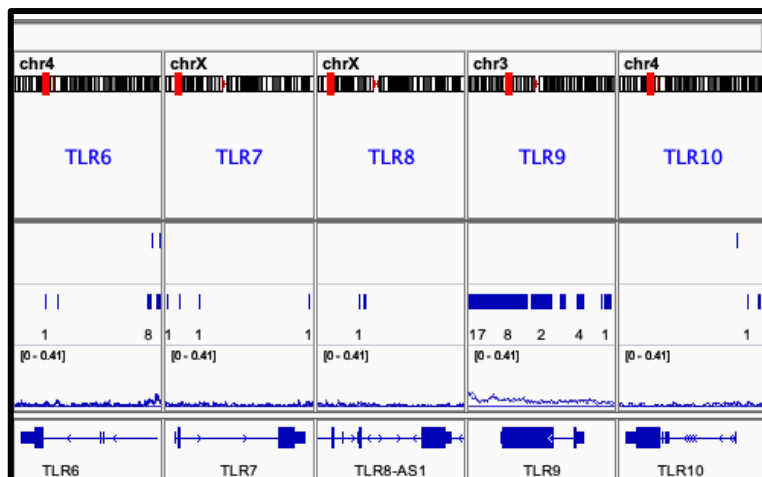
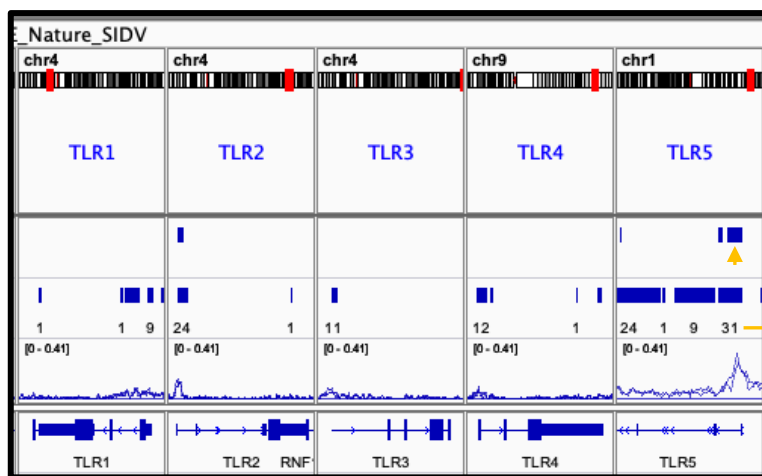
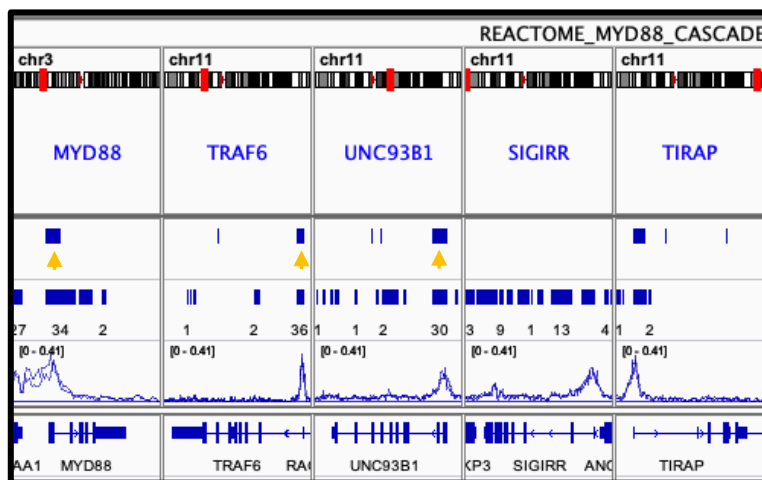
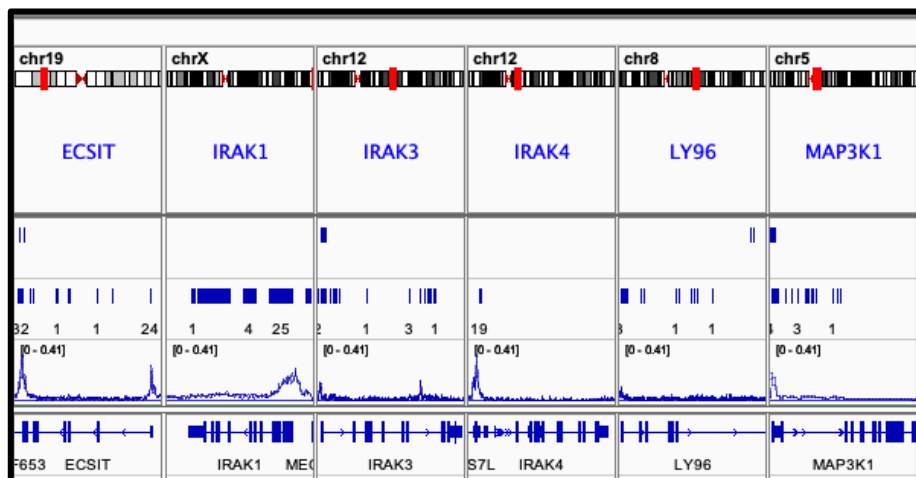


Supplementary Figure 13



Supplementary Figure 13. The promoters of genes belonging to the TLR5 cascade are active in ER+ breast cancer patients. IGV screenshot at loci of genes annotated in the MYD88 signaling cascade (Reactome), showing a summary of the H3K27ac signals across primary and metastatic samples from Patten, Corleone et al. 2018 (Nature Medicine), along with the SID-targeted CREs in the region.