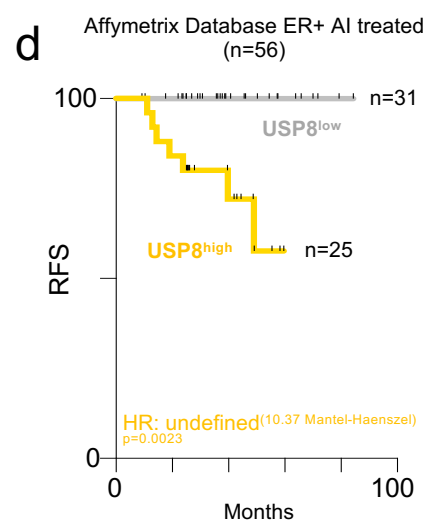
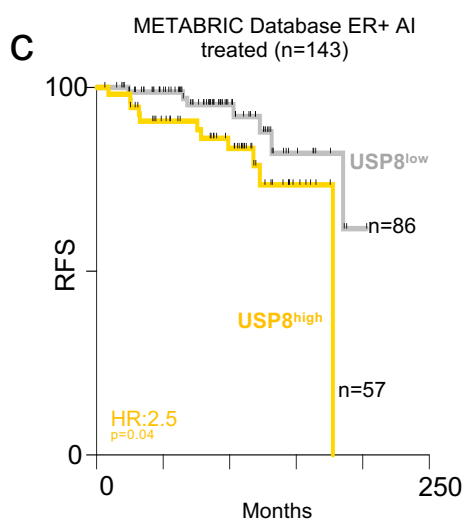
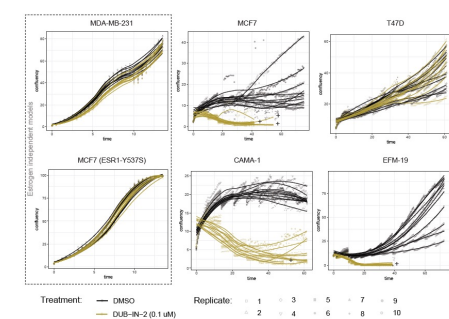
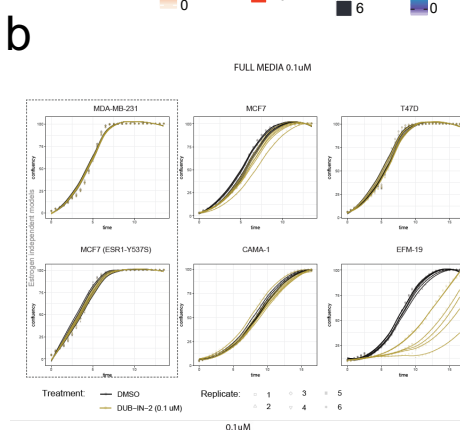
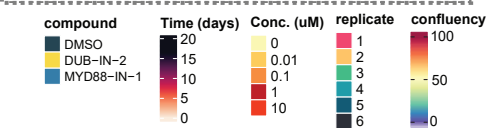
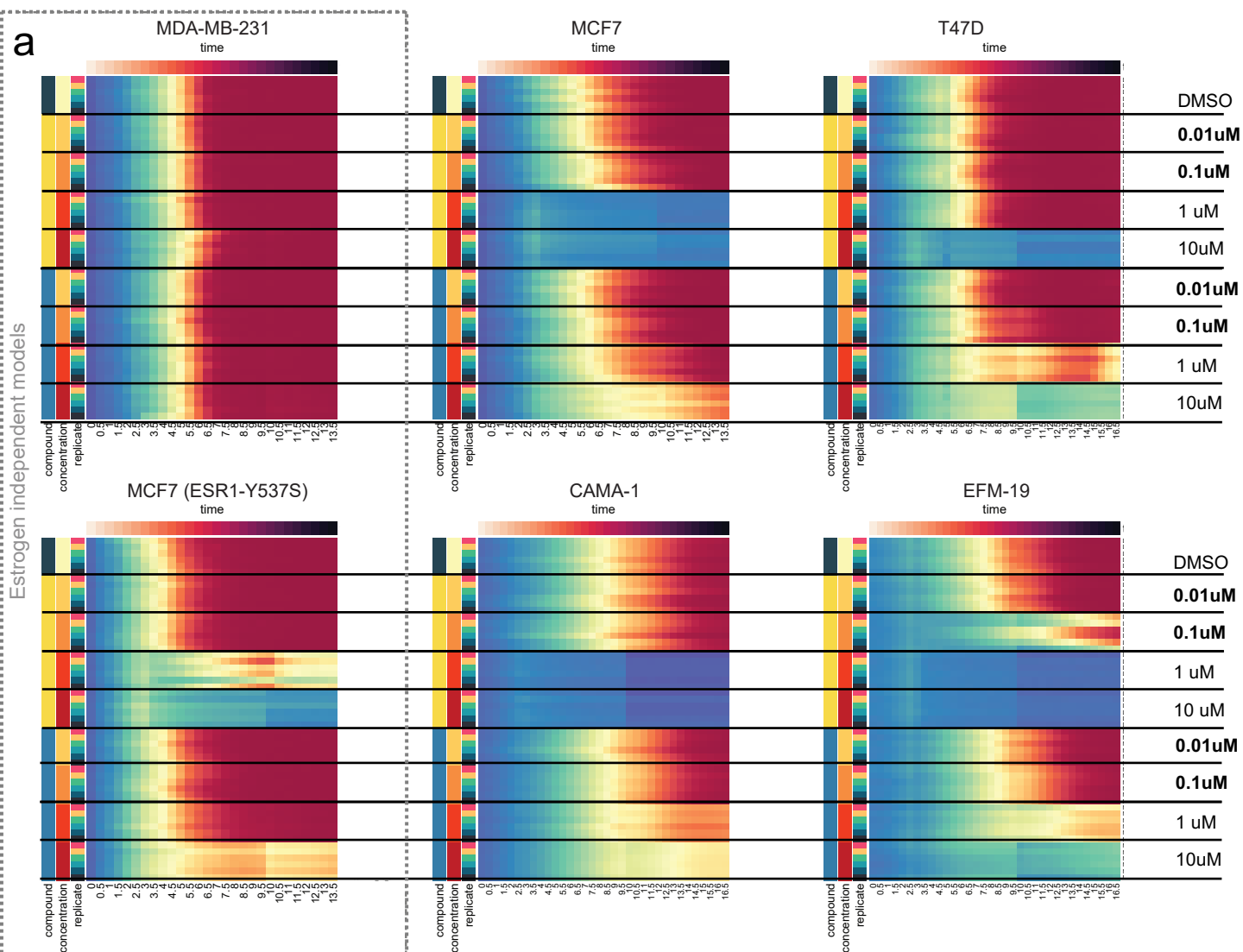


Supplementary Figure 15



Supplementary Figure S15. Validation of SIDP via chemical perturbation. (a) Heatmaps show the confluency of six breast cancer cell lines in response to USP8 (DUB-IN-2, yellow) and MYD88 (MYD88-IN-1, blue) perturbation. We tested five concentrations using live imaging in media containing oestrogen (full media). Lower concentrations (0.01 and 0.1 μM) very limited impact on cell viability in estradiol supplemented cells. (b) Left: Individual line plots show the impact of low doses DUB-IN-2 (0.1 μM) on the proliferation of six independent breast cancer cell lines. Right: Individual line plots show the impact of low doses DUB-IN-2 (0.1 μM) on the proliferation of six independent breast cancer cell lines when combined with oestrogen deprivation. (c-d) Retrospective AI-treated patient stratification based on RNA expression of USP8 (pre-treatment; yellow = USP8-high). RFS=recurrence free survival. Log-rank p-values calculated with a Mantel-Cox Test.