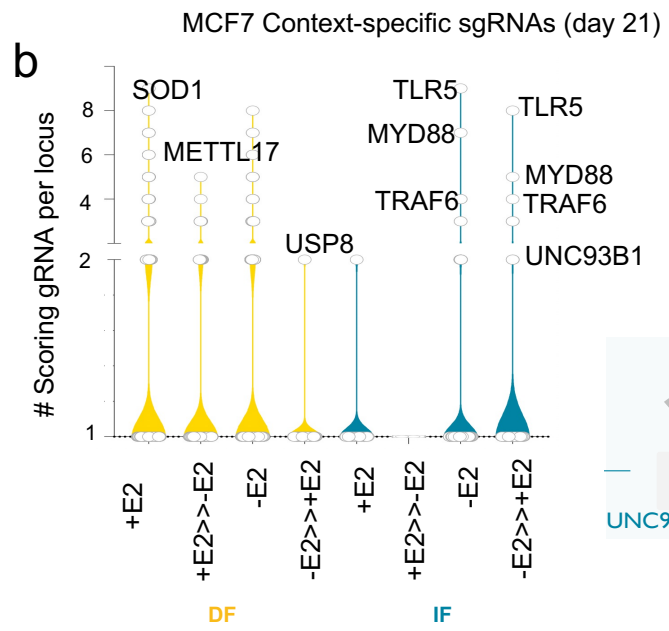
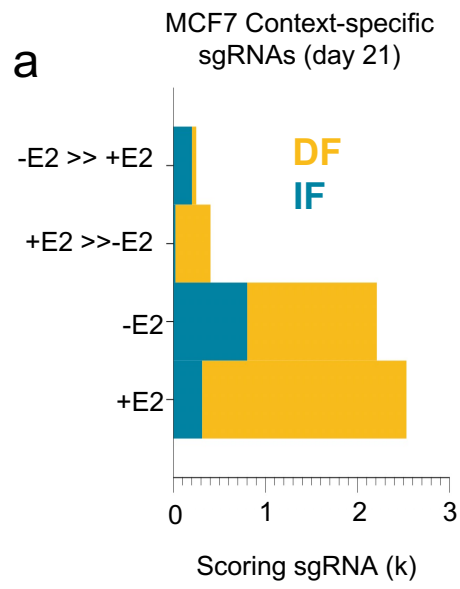


# Supplementary Figure 7



**Supplementary Figure 7. SIDP identifies regulatory regions with context-dependent activity in MCF7 cells.** (a) Bar plot showing the overall number of sgRNAs (k = thousand) showing the indicated behaviour at day 21. (b) Violin plots showing the number of sgRNAs per locus, for the loci significantly decreased or increased frequency at day 21 post-infection (-E2). The nearest gene to the overlapping CRE is indicated for specific outliers. (Bottom right) Schematic showing the genes identified in the TLR/NF- $\kappa$ B signaling pathway (showing at least one CRE with multiple sgRNAs showing increased frequency at day 21 post-infection).