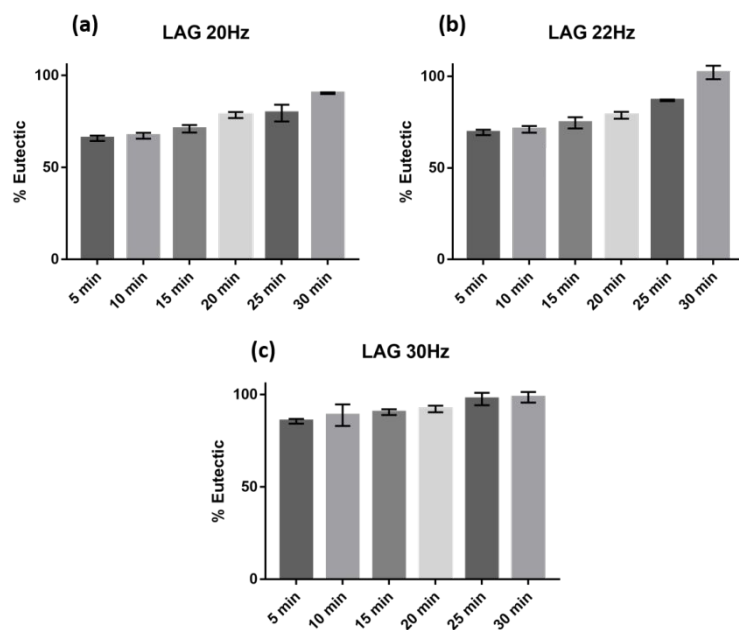
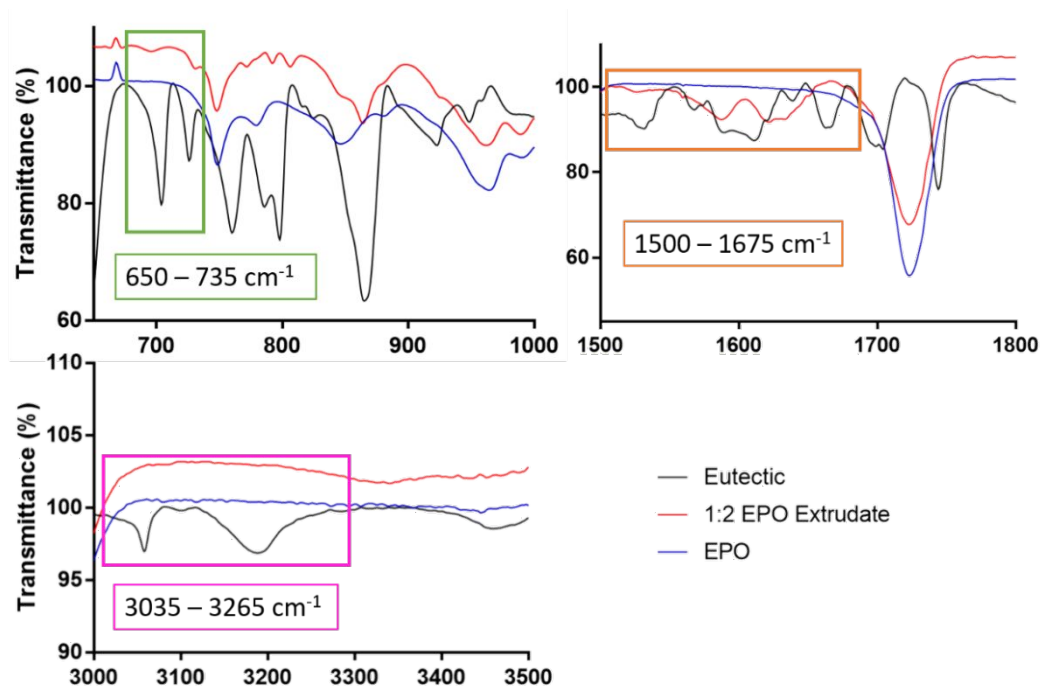


Supplementary Figure 1 Representative overlain DSC thermograms for binary mixtures of ABZ and MA after LAG at varying mole fractions of ABZ.



Supplementary Figure 2 Percentage yield of the 1:2 ABZ-MA eutectic during binary LAG, calculated using a PLS model after grinding for varying time periods at (a) 20 Hz, (b) 22 Hz and (c) 30 Hz, respectively.

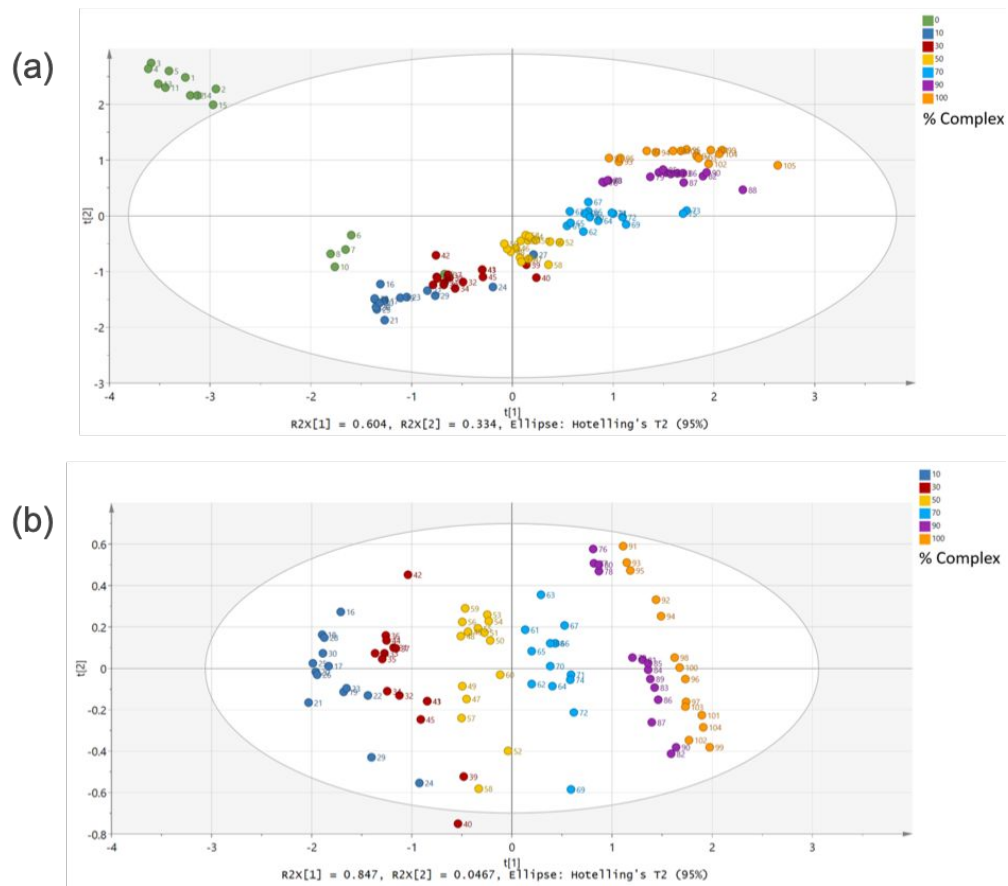


Supplementary Figure 3 FT-IR spectral regions, 3035 - 3265 cm^{-1} , 1500 - 1675 cm^{-1} , and 650 - 735 cm^{-1} , where EPO was found to show negligible interference to the formation of the ABZ-MA 1:2 eutectic.

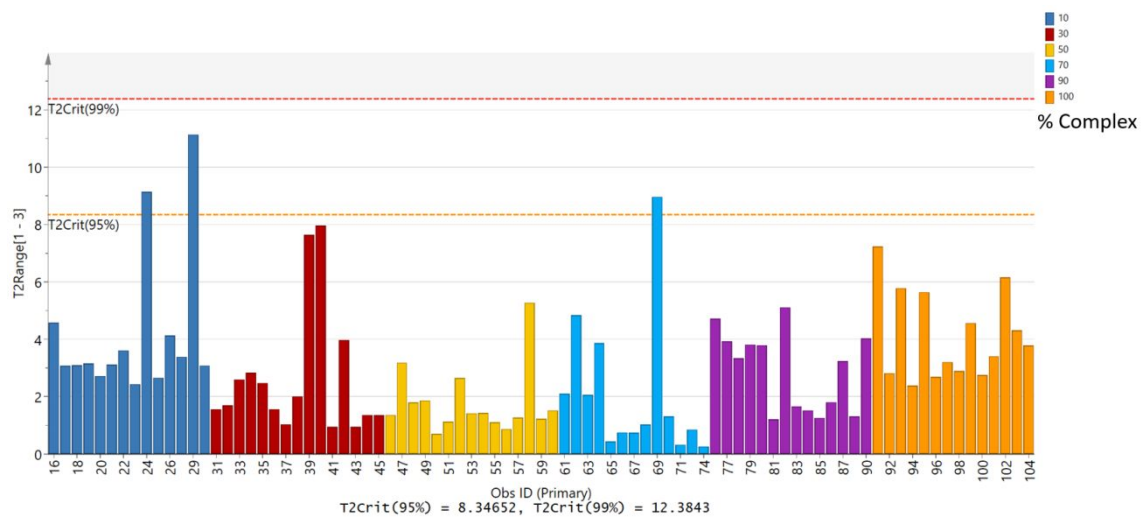
Supplementary Table 1 Calculated parameters from several versions of the PLS model when data were pre-processed using different spectral filters*.

Spectral Filter	R^2X	R^2Y	Q^2	RMSEE	RMSEcv
Raw data	0.963	0.944	0.934	8.62	9.20
SNV	0.945	0.976	0.974	5.70	5.85
MSC	0.950	0.974	0.972	5.89	6.05
1 st Derivative	0.958	0.978	0.974	5.45	6.07
2 nd Derivative	0.957	0.980	0.977	5.19	5.58
Savitzky-Golay	0.963	0.946	0.935	8.53	9.15

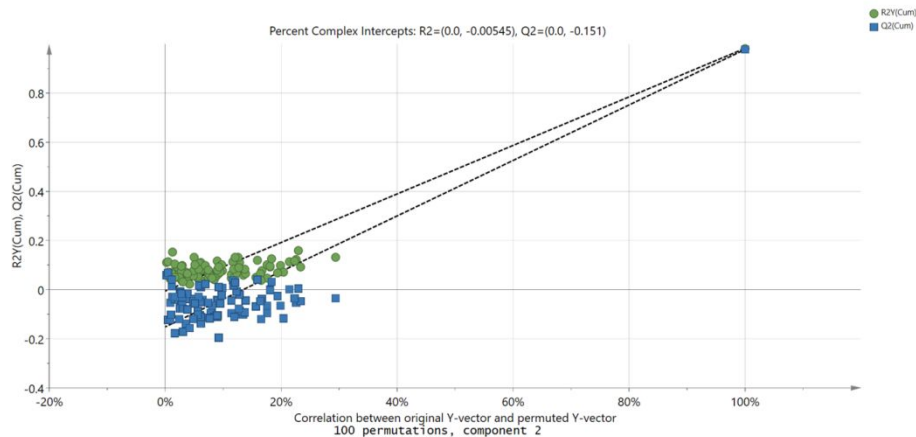
* R^2X , R^2 predicted; R^2Y , R^2 observed; Q^2 , indication of model validity; RMSEE, root mean square error of estimation; RMSEcv, root mean square error of cross validation; SNV, standard normalised variate; MSC, multiplicative scatter correction.



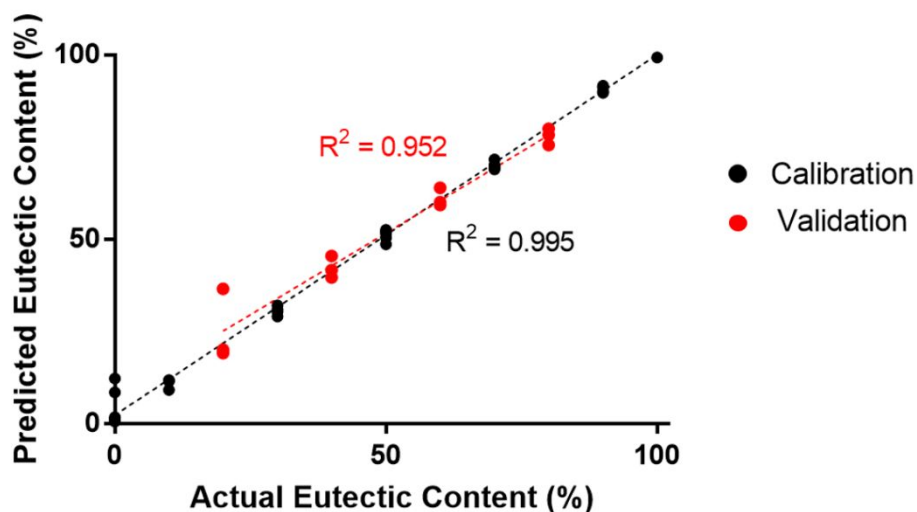
Supplementary Figure 4 Score plot of data after application of the first (a) and second (b) derivative filters, respectively, (t_1 versus t_2), containing two principal components. The plot was coloured according to percentage of the ABZ-MA 1:2 eutectic.



Supplementary Figure 5 Hotelling's T2 plot, showing three suspect outliers and no major outliers in the data after application of the second derivative filter. The 95% and 99% confidence limits are shown by the yellow and red dotted lines, respectively. The column plot was coloured according to percentage of the ABZ-MA 1:2 eutectic.



Supplementary Figure 6 Response permutation plot for validation of the model, where the green circles represent R^2Y and the blue squares Q^2 . Q^2 intercepted at -0.151 and R^2 intercepted at -0.005 .



Supplementary Figure 7 Graph of observed versus predicted eutectic content (%).

Supplementary Table 2 Drug percentage (DP %) and dissolution rate (DR %/min) at particular timepoints for the EPO extrudates of ABZ and ABZ-MA 1:2.

	DP (%)			DR (%/min)		
	5 min	30 min	120 min	5 min	30 min	120 min
ABZ-EPO	7.1±1.2	17.7±0.5	38.8±0.9	1.4±0.2	0.6±0.1	0.3±7.3x10 ⁻³
ABZ-MA-EPO MiniLab	8.7±0.6	22.3±0.7	68.9±1.3	1.7±0.1	0.7±0.02	0.6±4.4x10 ⁻³
ABZ-MA-EPO Rondol	7.4±1.6	24.8±4.2	71.5±1.0	1.5±0.3	0.8±0.1	0.6±8.3x10 ⁻³