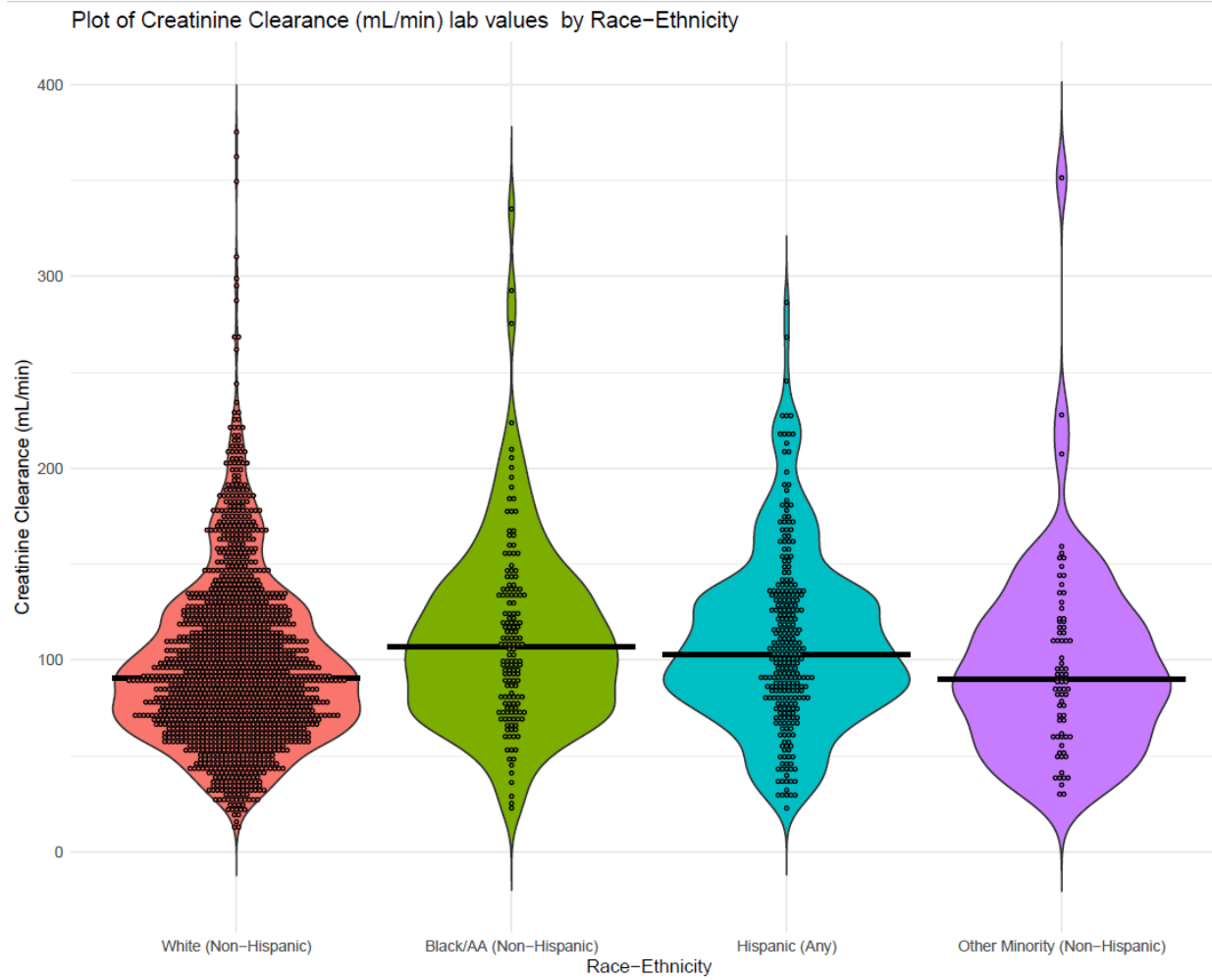
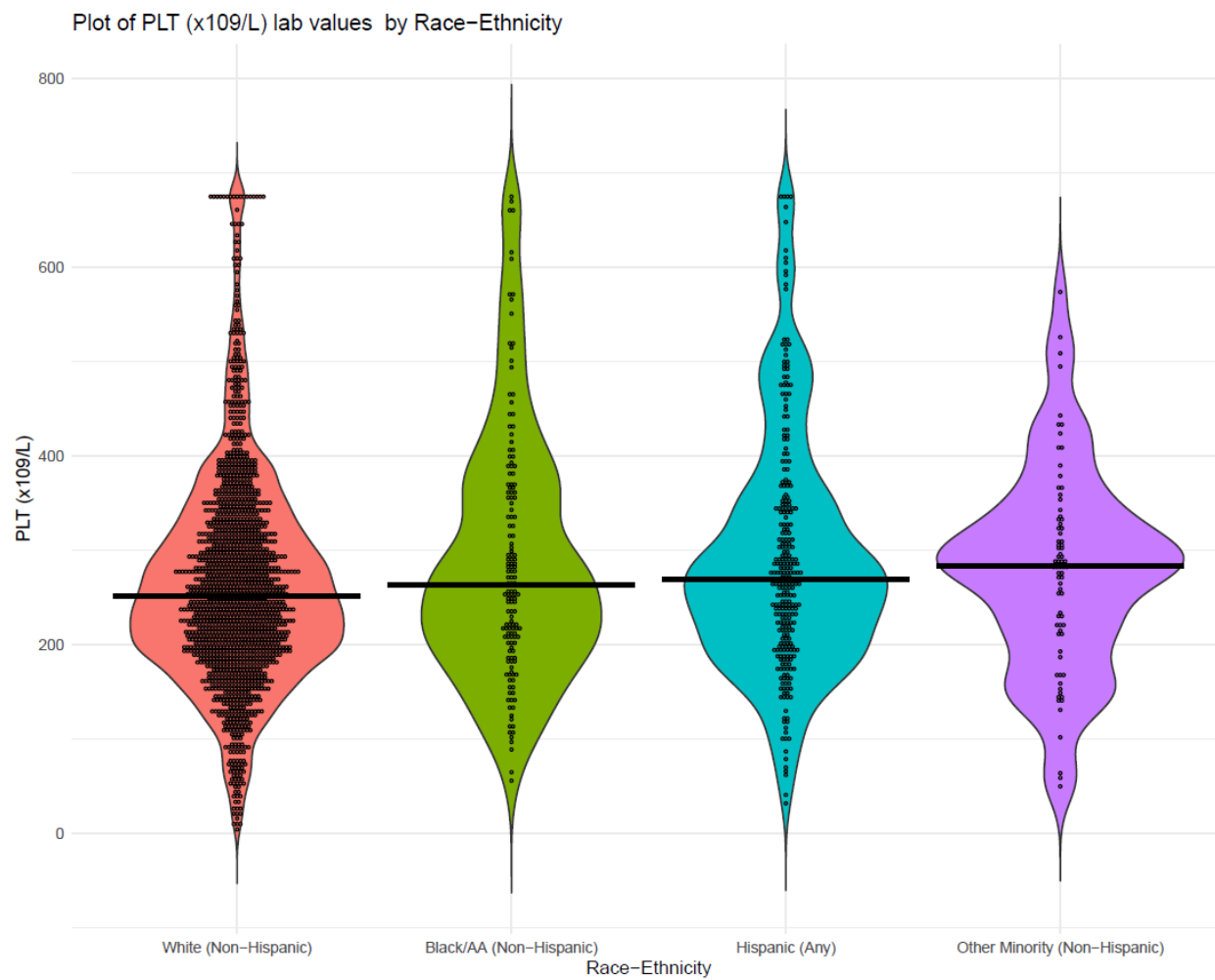


## Supplementary Figures

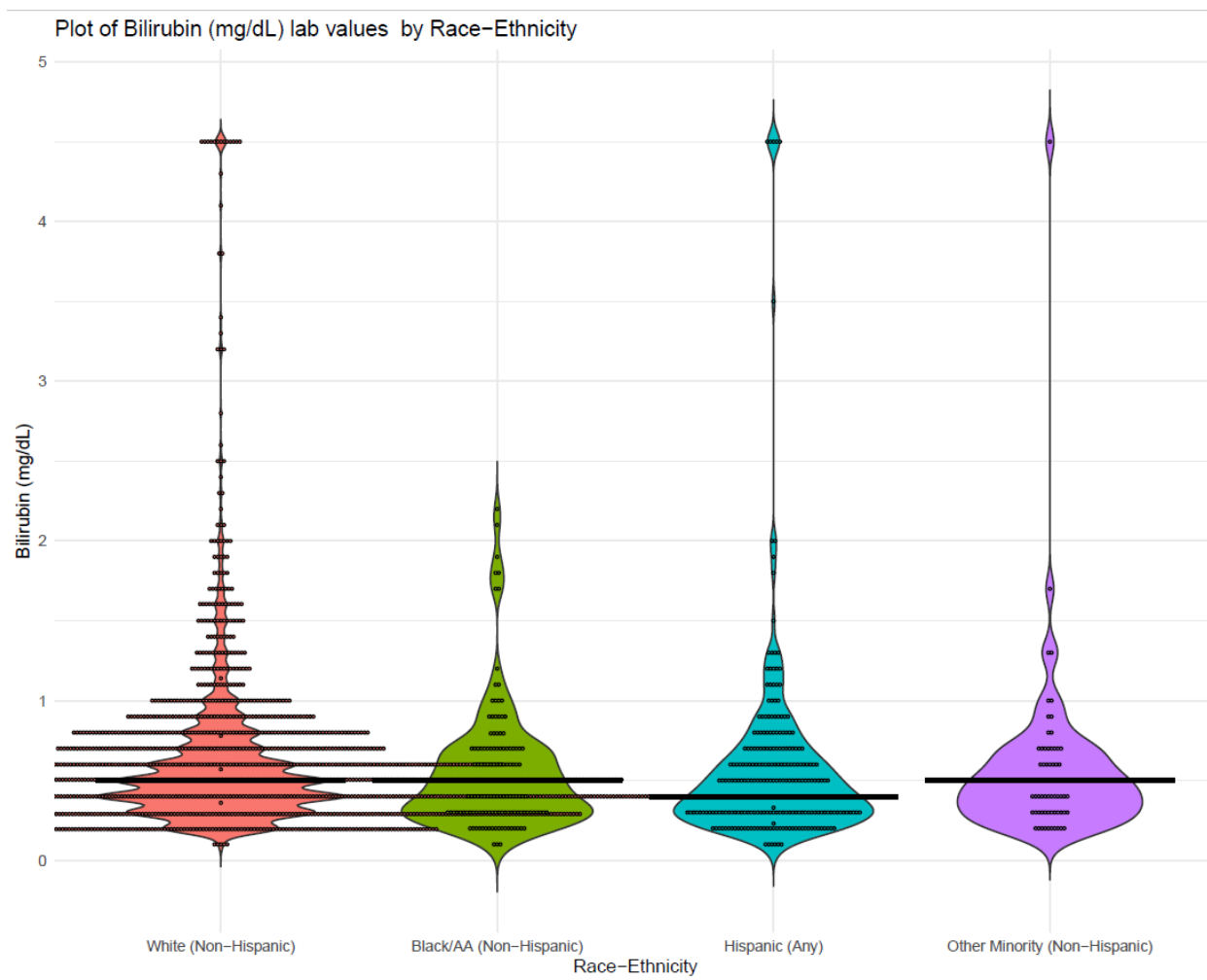
### Figure S1: Creatinine Clearance by Race-Ethnicity



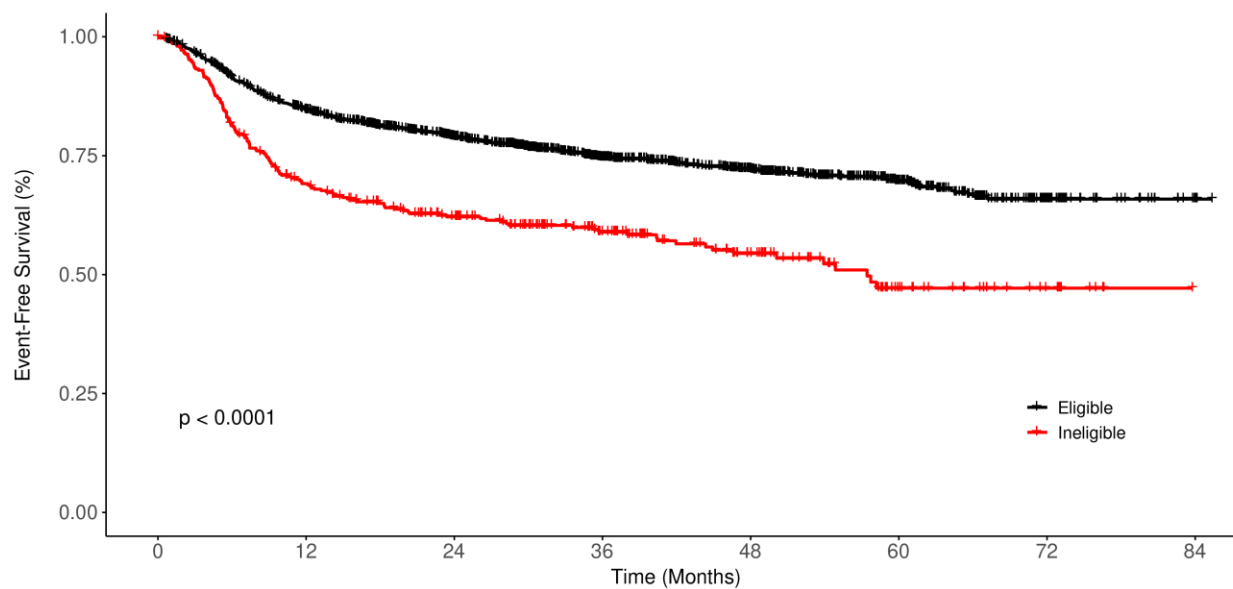
**Figure S2: Platelet Counts by Race-Ethnicity**



**Figure S3: Bilirubin by Race-Ethnicity**



**Figure S4: Event-free survival in LEO Cohort by POLARIX Eligibility**



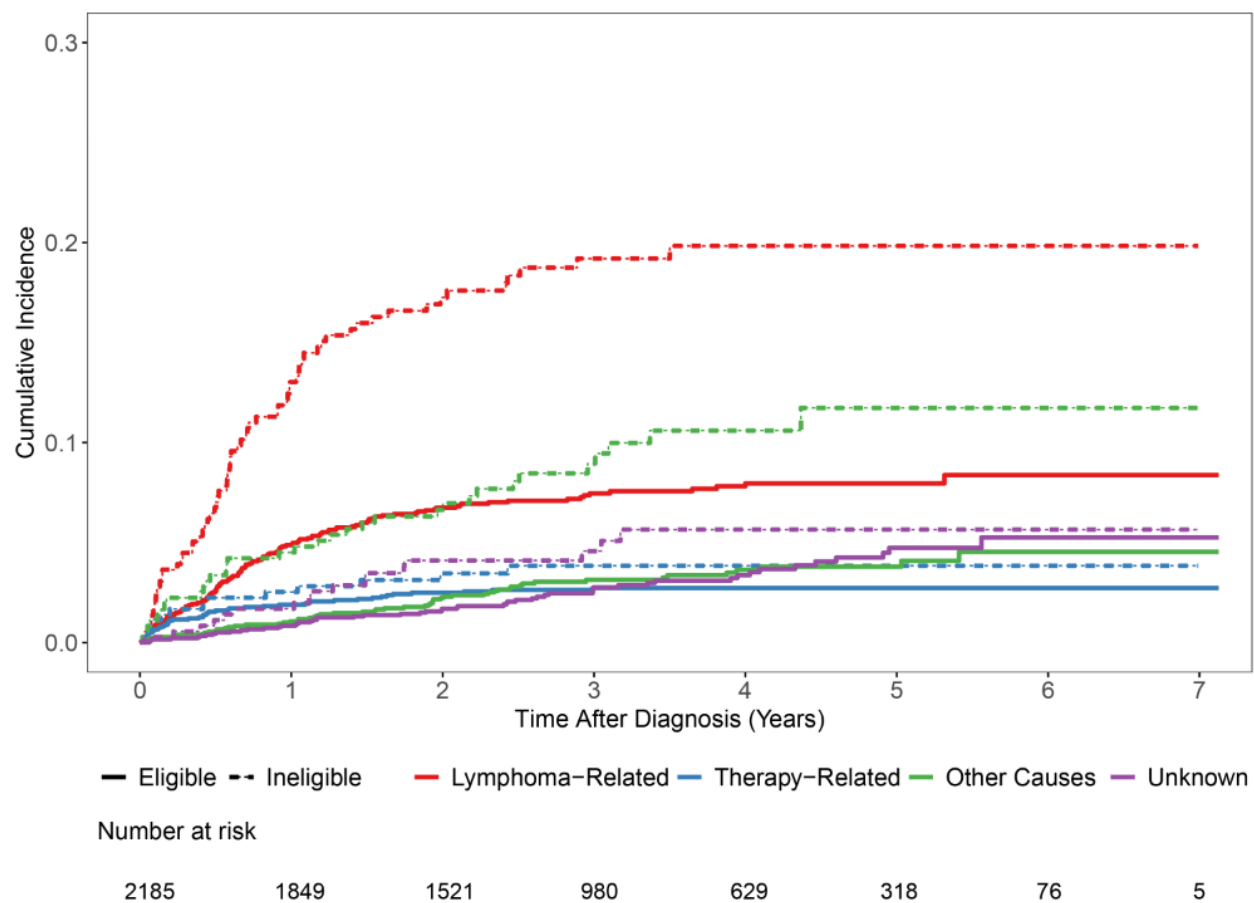
Number at risk

Eligible	1825	1463	1191	760	513	259	56	4
Ineligible	360	237	184	117	64	27	9	0

Cumulative number of events

Eligible	0	274	366	422	443	457	467	467
Ineligible	0	109	132	140	147	153	153	153

**Figure S5: Cause of Death in LEO Cohort by POLARIX Eligibility**



**Table S1: Lab-based Eligibility Criteria from Recent Clinical Trials**

PARAMETER	PHOENIX	ROBUST	ECOG1412	REMoDL-B	GOYA	ENGINE	CALGB 50303	POLARIX
ANC (x 10 <sup>9</sup> /L)	>1000	>1500 (>1000 for BM inv)	>= 1500	>1000 (lower unless due to lymphoma)	>1500	> 1500	>1000	>1000, unless BM inv
Platelets (x 10 <sup>9</sup> /L)	>75, unless BM inv	>75 (>50 for BM inv)	>= 100	>100	>75	> 75	>100	>75
Bilirubin (mg/dL)	<1.5Xupper limit of normal (ULN)	< 1.5 x ULN or if total bilirubin is > 1.5 x ULN, the direct bilirubin must be normal	< 1.5 ULN or if total bilirubin is > 1.5 x ULN, the direct bilirubin must be normal	<3.5 mg/dL	< 1.5 X ULN	< 1.5 X ULN	< 2.0	< 1.5 x ULN
Creatinine clearance (CrCl) (mL/min)	>40 ml/min	>30 ml/min	> 30 ml/min	>30 ml/min	> 40 ml/min	> 50 ml/min	> 50ml/min	> 40 mL/min
Hemoglobin (g/dL)	Not mentioned	>7.5	Not mentioned	Not mentioned	>9	> 10	Not mentioned	> 9