

Fig. S1. The transcripts of human *SEPT9* and protein expression inconsistent with mRNA expression in several tumors. Related to Fig. 2A, I. (A) Location of 48 different transcripts of human *SEPT9* gene in Chromosome 17. (B) Representative immunohistochemical staining of *SEPT9* protein from HPA portal.

A

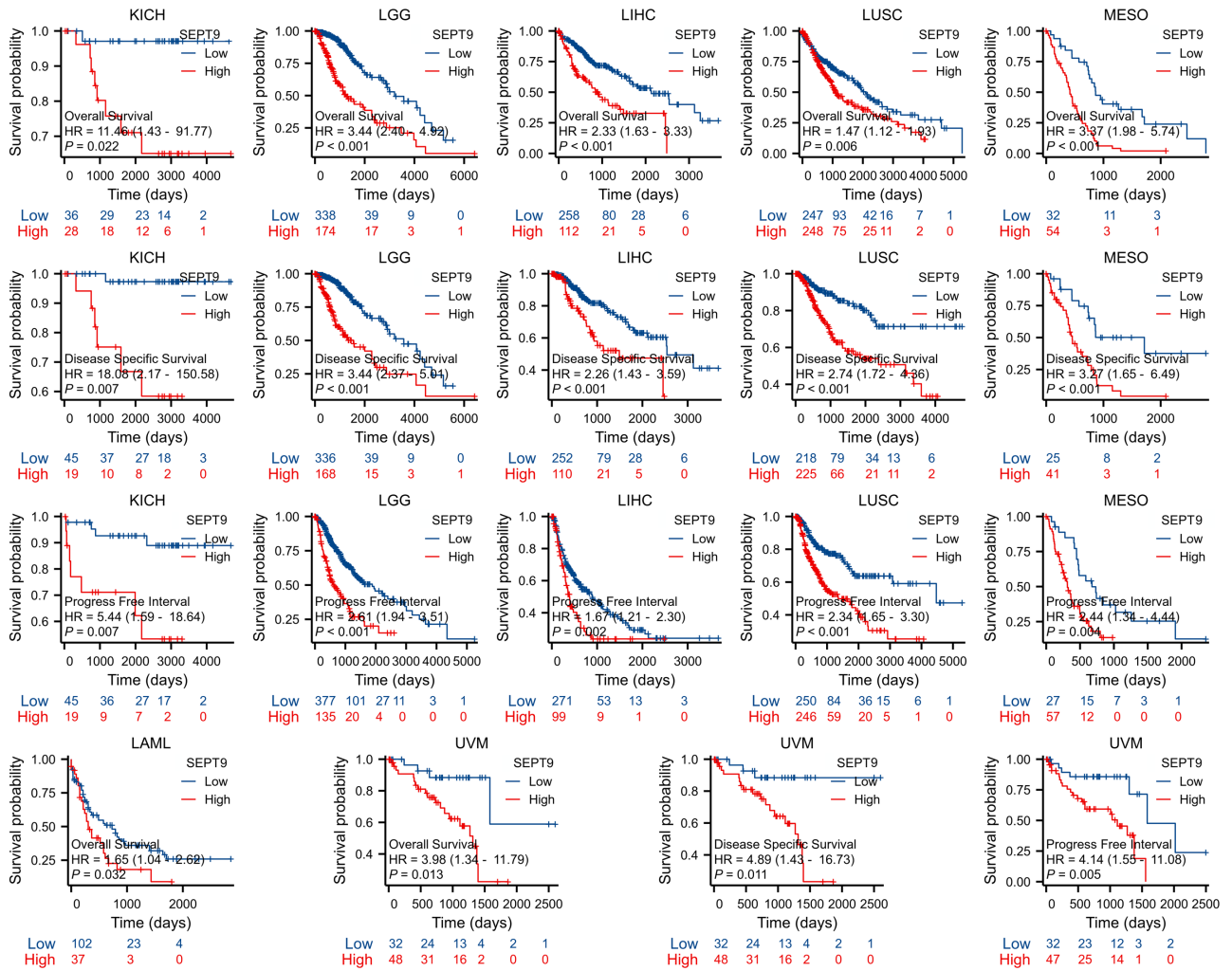


Fig. S2. The prognostic role of *SEPT9* in pan-cancer with TCGA datasets. Related to Fig. 4C. (A) The OS, DSS, and PFI curves with significant prognostic value according to *SEPT9* level.

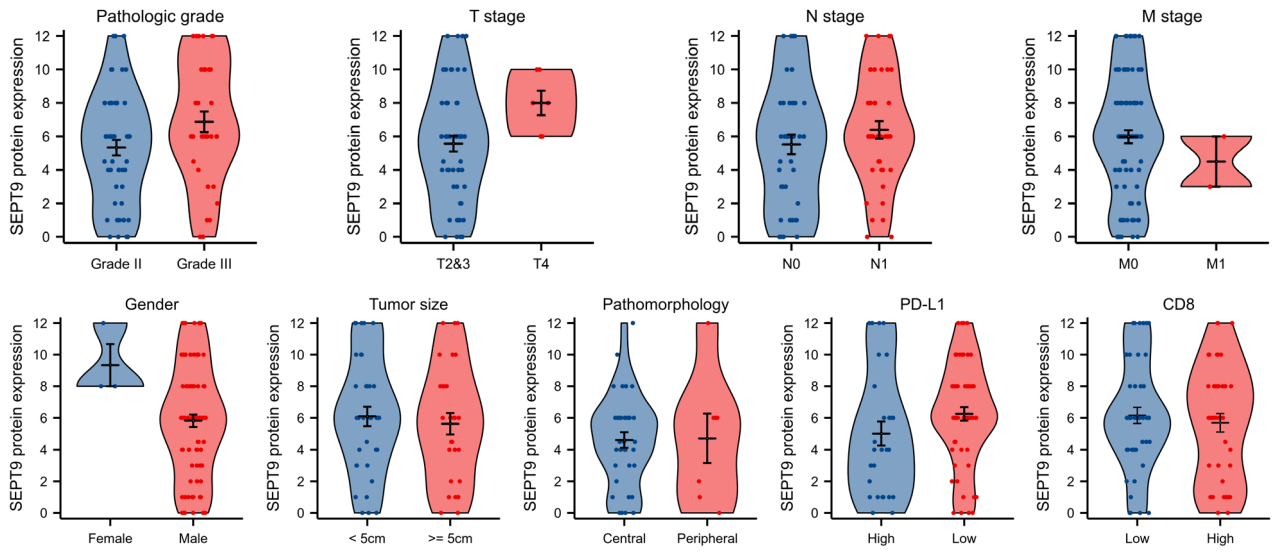
A

Fig. S3. Clinical correlation of SEPT9 protein with no significant difference. Related to Fig. 4J. **(A)** Correlation of SEPT9 protein expression with pathologic grade, T, N, M stage, gender, tumor size, pathomorphology, PD-L1, and CD8.