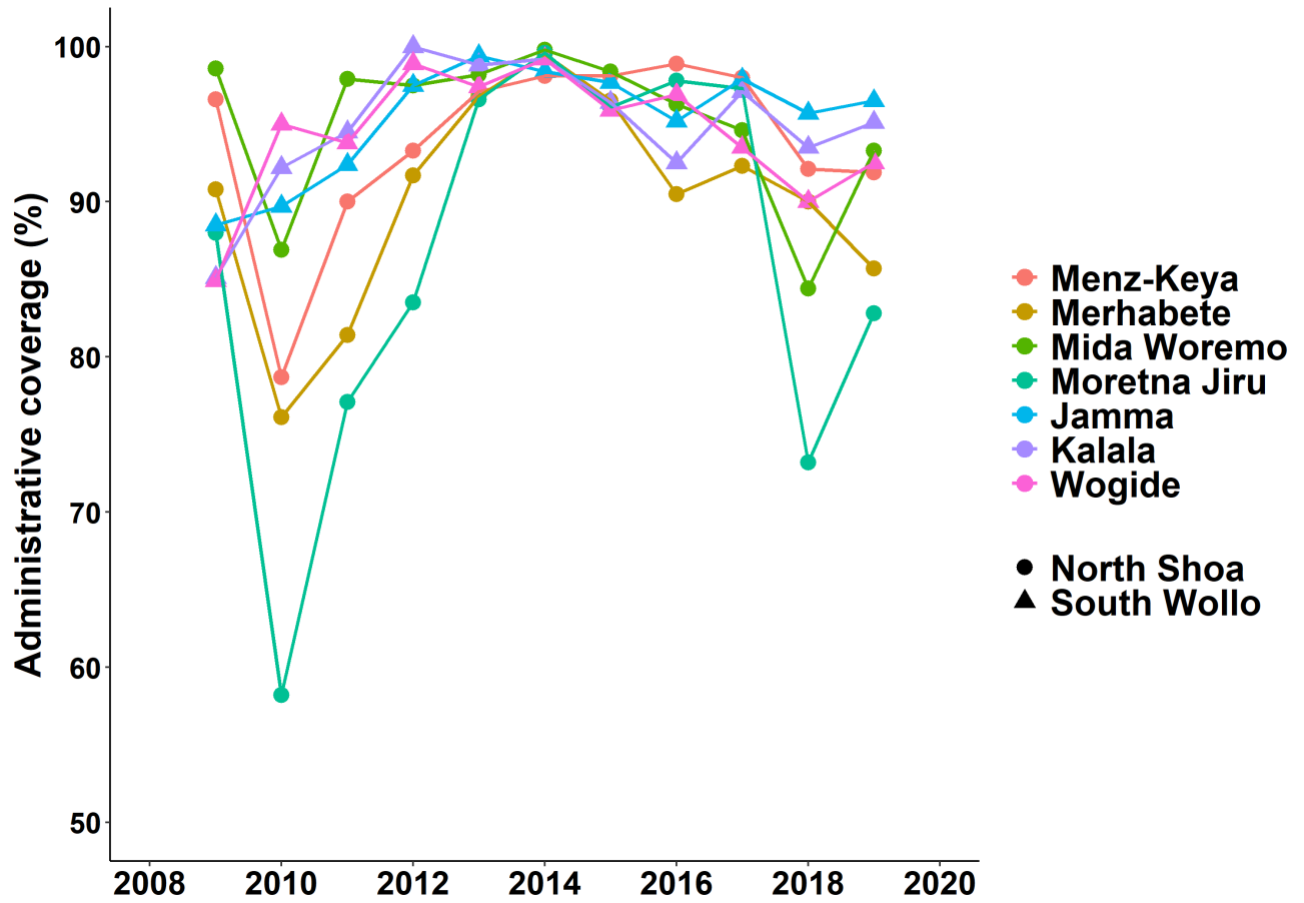
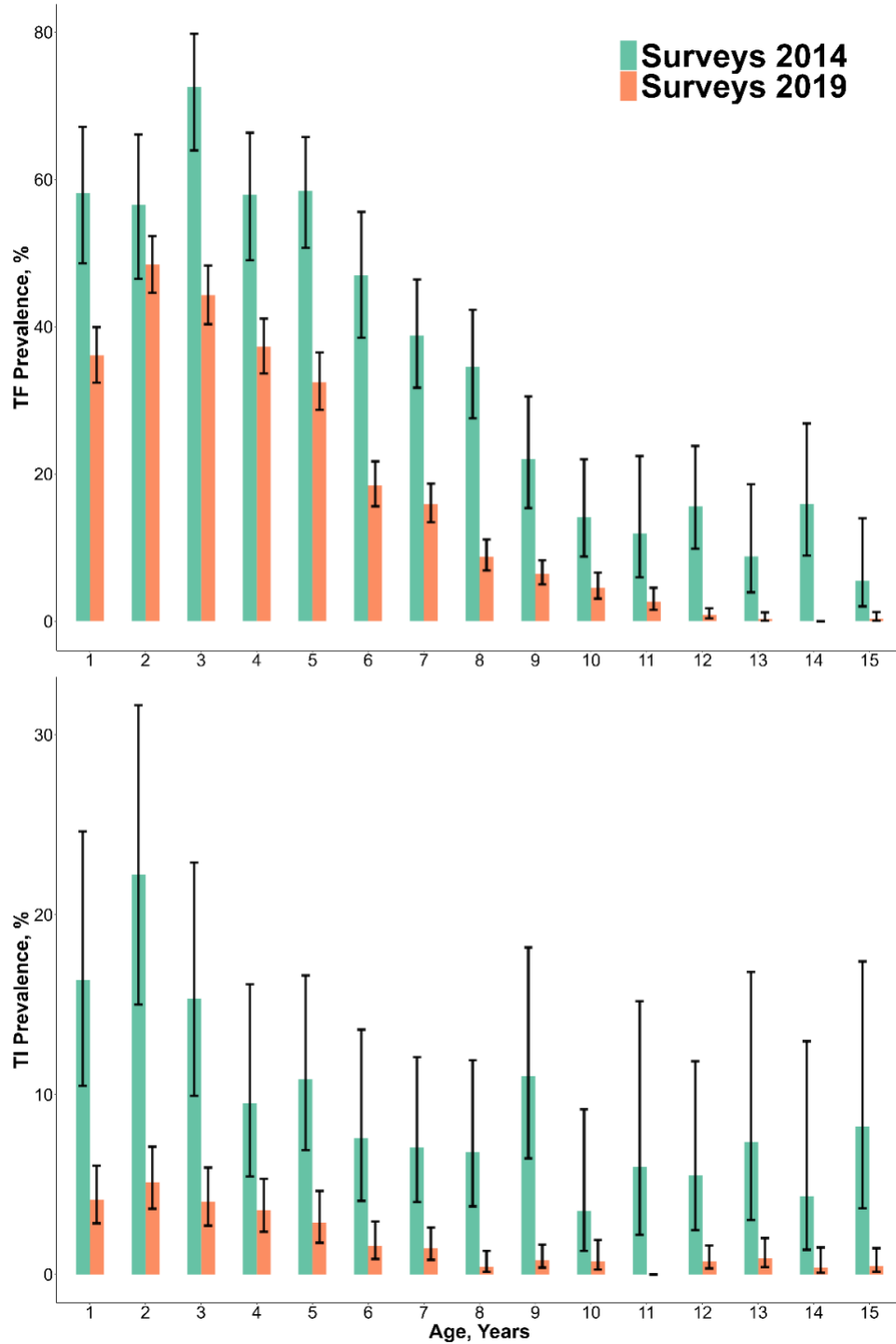


Supplemental Figure 1. Administrative mass drug administration (MDA) coverage by district, 2009-2019, Amhara, Ethiopia, 2019

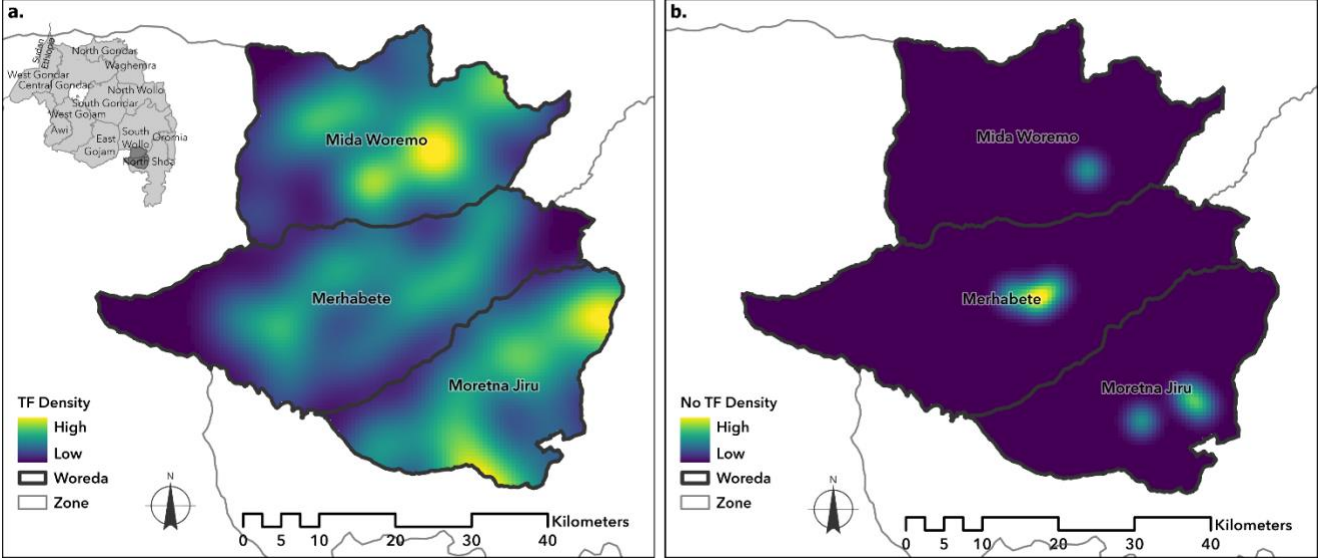


Administrative coverage defined as the total number of doses distributed divided by the targeted population.

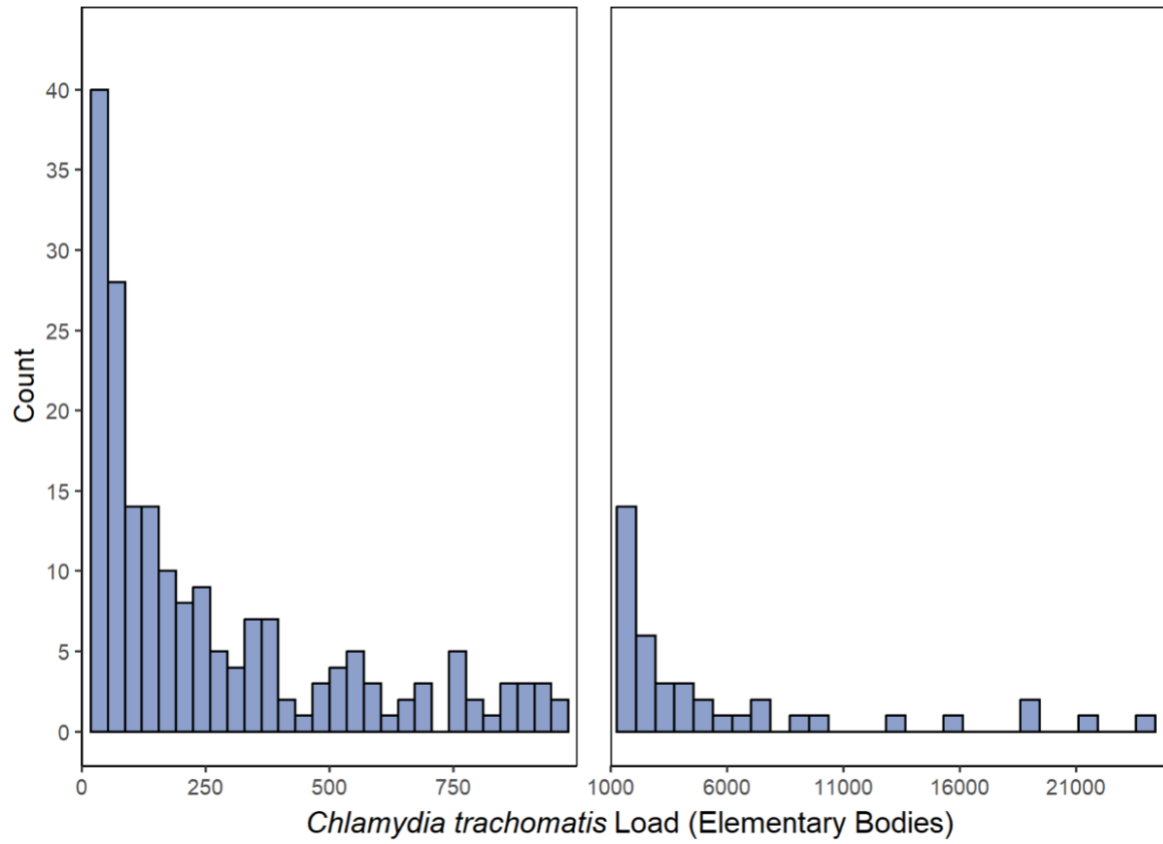
Supplemental Figure 2. Age specific prevalence of trichomatous inflammation-follicular (TF) and trichomatous inflammation-intense (TI) among children ages 1 to 15 years across 7 districts of Amhara, Ethiopia, 2019



Supplemental Figure 3. Maps of spatial density and clustering among 3 survey districts using kernel estimation of a) trachomatous inflammation-follicular (TF) density and b) non-TF density, Amhara, Ethiopia, 2019



Supplemental Figure 4. Distribution of *Chlamydia trachomatis* elementary body load, Amhara, Ethiopia, 2019



Supplemental Table 1. District prevalence of water, sanitation, and hygiene indicators, Amhara, Ethiopia, 2019

District	Clean face, ages 1-9 years (95% CI)	Presence of latrine (95% CI)	Improved water source (95% CI)	Access to water < 30 minutes (95% CI)
Menz-Keya	59.4 (51.1, 67.4)	36.6 (27.4, 45.7)	47.2 (31.6, 63.0)	26.2 (15.2, 36.8)
Merhabete	63.4 (54.9, 71.9)	22.9 (14.0, 33.2)	69.2 (56.3, 85.8)	22.6 (11.8, 36.0)
Mida Woremo	66.4 (58.4, 74.3)	34.4 (25.0, 44.4)	45.2 (28.8, 61.9)	21.4 (11.7, 33.9)
Moretna Jiru	65.9 (58.7, 72.7)	40.7 (30.1, 51.6)	57.0 (41.6, 74.5)	23.6 (11.0, 36.2)
Jamma	70.8 (61.7, 79.3)	64.3 (54.0, 74.3)	71.6 (57.9, 86.6)	26.3 (14.3, 38.2)
Kalala	69.6 (61.8, 77.2)	43.8 (31.8, 56.1)	48.3 (32.0, 65.8)	23.1 (11.1, 35.3)
Wogide	68.2 (61.3, 74.6)	38.7 (27.3, 50.6)	75.0 (58.8, 88.8)	30.2 (16.1, 42.8)