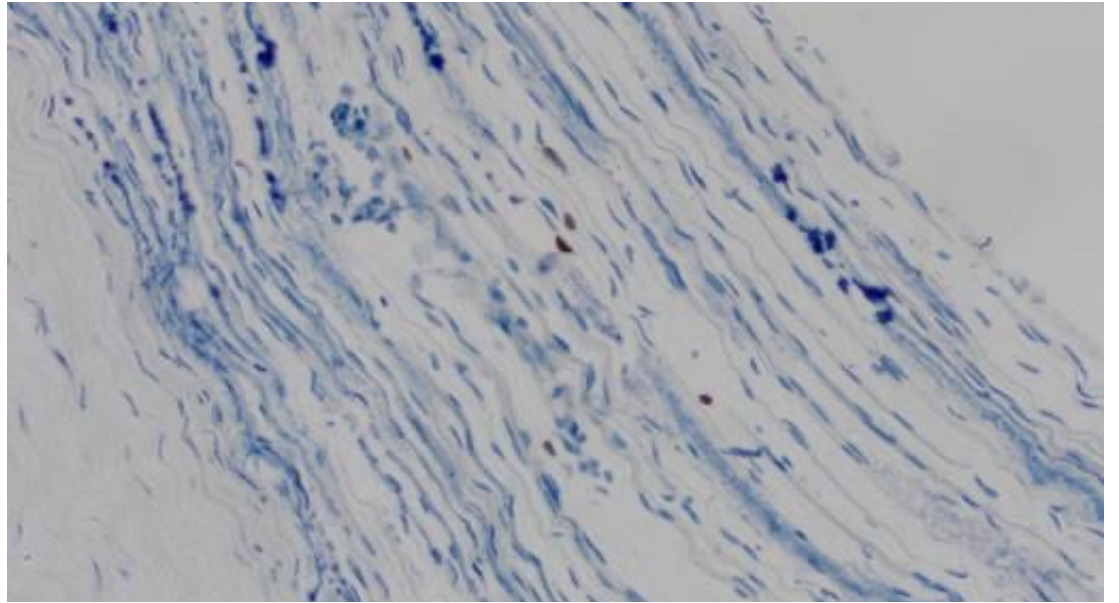
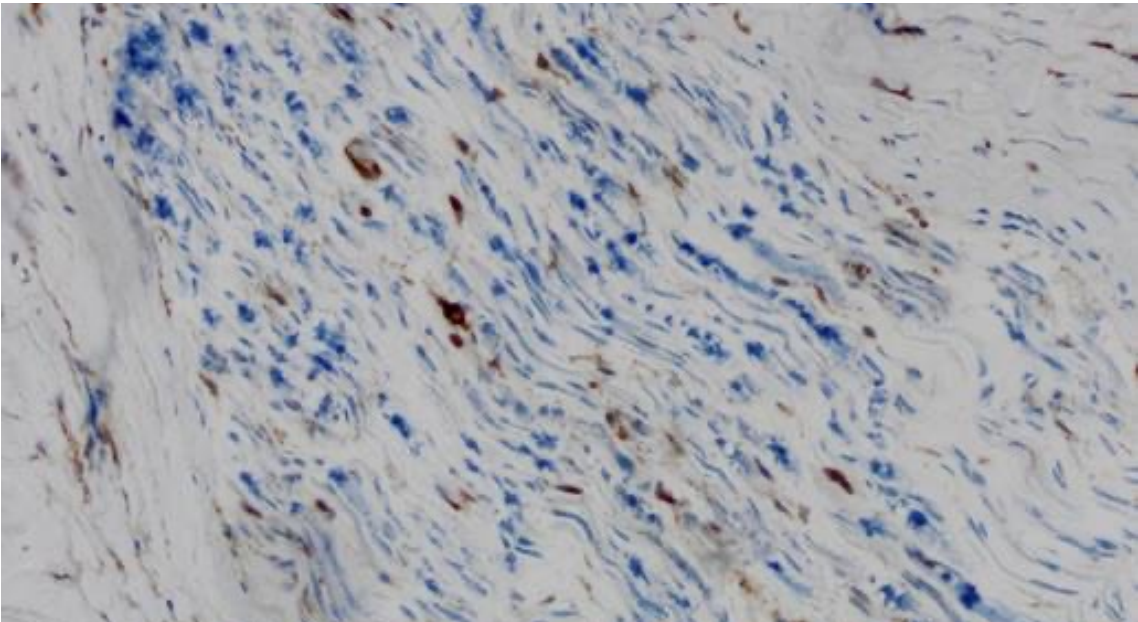
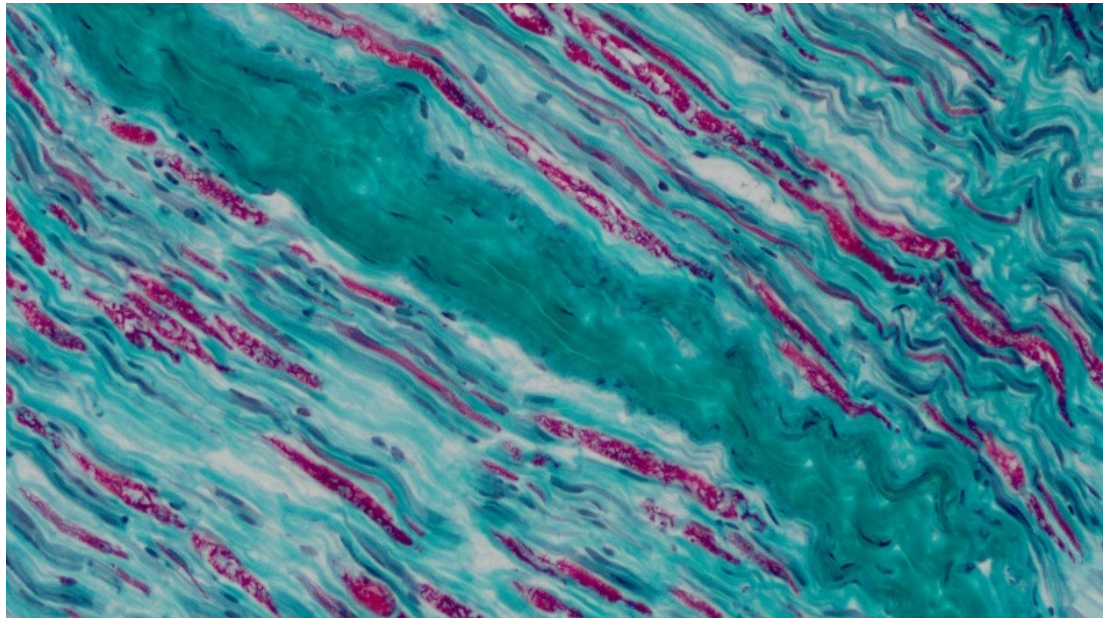


A**B****C****D**

<i>Comorbidity</i>	<i>n</i>	<i>%</i>
<i>Other neuropathies</i>	7	4
Guillain-Barré syndrome	7	
<i>Autoimmune diseases</i>	26	13
Hypothyroidism	14	
Rheumatoid arthritis	3	
<i>Cardiovascular diseases</i>	104	54
Arterial hypertension	87	
Coronary heart disease	19	
Atrial fibrillation	17	
<i>Pulmonary diseases</i>	28	15
Chronic obstructive pulmonary disease	9	
Sleep apnea	8	
Bronchial asthma	5	
<i>Neurological diseases</i>	40	21
Stroke	9	
Restless legs syndrome	3	
Parkinson's disease	3	
<i>Psychiatric diseases</i>	27	14
Depression	22	
Anxiety disorder	3	
<i>Malignancies</i>	36	19
Monoclonal gammopathy of undetermined significance	21	
Prostate cancer	5	
Multiple myeloma	3	
Colon cancer	3	
<i>Ophthalmological diseases</i>	15	8
Cataract	11	
Glaucoma	3	
<i>Metabolic diseases</i>	61	32
Diabetes mellitus type 2	43	
Hypercholesterolemia	19	
Obesity	6	
<i>Gastroenterological diseases</i>	20	10
Diverticulitis	5	
Steatosis hepatis	4	
Gastritis	3	
<i>Renal diseases</i>	20	10
Chronic renal failure	13	
Diabetic nephropathy	2	
<i>Infectious diseases</i>	8	4
Lyme disease	4	
Human immunodeficiency virus	3	
Urinary tract infection	2	
<i>Other diseases</i>	49	25
Disc prolapse	11	
Prostatic hyperplasia	5	
Arthrosis	4	

Supplementary Table 1 Prevalence of comorbidities among typical CIDP patients

Individual comorbidities of CIDP patients. Results are shown as total values (n) or absolute frequencies (%).

Abbreviations: CIDP, chronic inflammatory demyelinating polyneuropathy.

Characteristic	Immunoglobulins	Prednisolone
Total	105	72
Sex (n (%))		
Male	78 (74)	45 (63)
Female	27 (26)	27 (37)
Age (mean ± SEM)		
Age at study begin (years)	62 ± 2	62 ± 2
Age at first manifestation (years)	58 ± 1	57 ± 1
Age at diagnosis (years)	59 ± 1	59 ± 2
Time between manifestation and diagnosis (months)	17 ± 3	21 ± 4
Type of consultation (n (%))		
Outpatient	56 (53)	42 (58)
In-patient	30 (29)	22 (31)
Clinical scores (mean ± SEM)		
INCAT arm disability score at diagnosis	0.9 ± 0.1	0.6 ± 0.1
INCAT leg disability score at diagnosis	2 ± 0.1	1.3 ± 0.01
MRC sum score at diagnosis	53.5 ± 0.9	56.1 ± 0.6
Therapy		
Time to first treatment from diagnosis in months (mean ± SEM)	4.4 ± 0.8	4.7 ± 1.4
SOC-responder (n (%))	67 (64)	39 (54)
SOC-refractory (n (%))	36 (35)	33 (46)
Switch to second therapy (n (%))	43 (41)	63 (88)

Supplementary Table 2 Baseline data of first therapies of typical CIDP patients

Baseline data of typical CIDP patients receiving immunoglobulins as first therapy versus prednisolone. Results are shown as total values (n) with absolute frequencies (%) or mean ± SEM.

Abbreviations: CIDP, chronic inflammatory demyelinating polyneuropathy; INCAT, Inflammatory Neuropathy Cause and Treatment; MRC, Medical Research Council; SEM, standard error of the mean; SOC, standard of care