

A Supplementary material

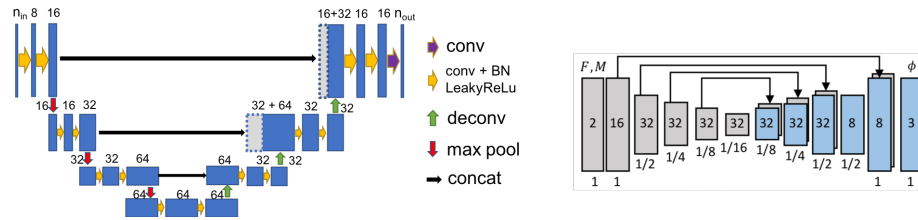


Fig. 3: Architectures of the segmentation network (left) and the registration network (right). In the segmentation network, max-pooling is used for down-sampling for which 2-stride convolution is used in the registration network.

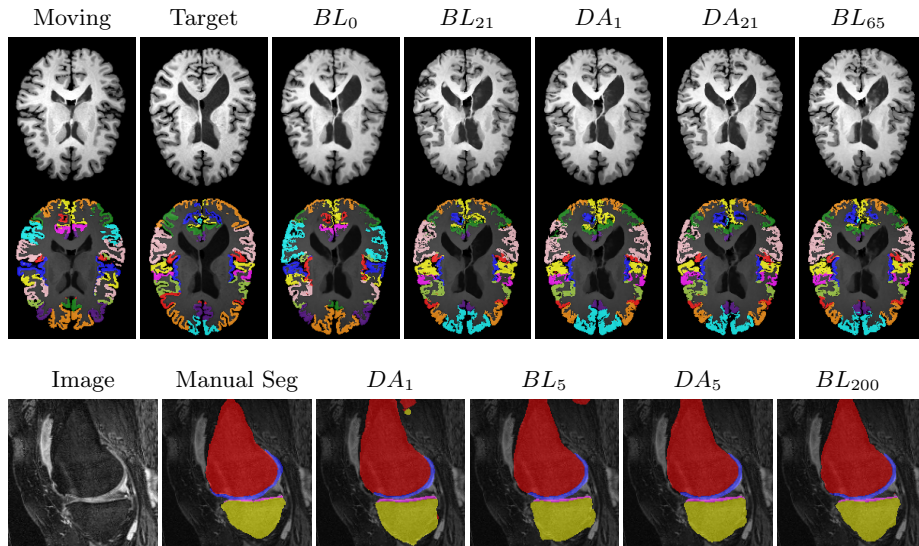


Fig. 4: Examples of brain MRI registration (top) and knee MRI segmentation (bottom) results. **Top:** The first two columns are the moving image/segmentation and the target image/segmentation followed by the warped moving images/segmentations by different models. **Bottom left to right:** original image, manual segmentation, and predictions of various models. BL_i and DA_i represent the baseline and DA models with i manual segmentations respectively.