

Fig. S9

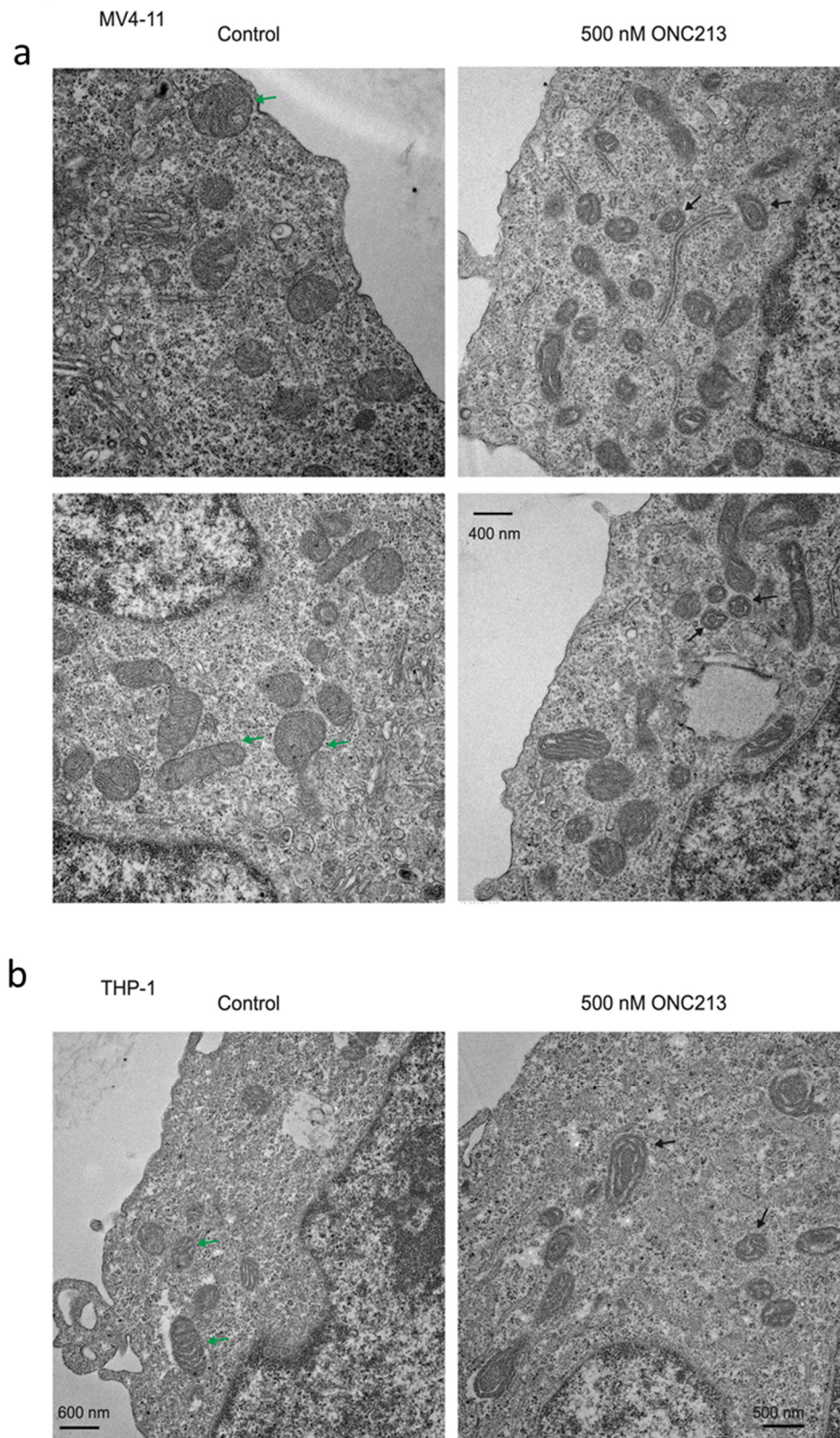


Fig. S9. ONC213 treatment alters mitochondrial morphology in AML cells. MV4-11 (panel a) and THP-1 (panel b) cells were treated with either vehicle or 500 nM ONC213 for 8 h and processed for imaging by electron microscopy. Representative images are shown. Green arrows indicate mitochondria with normal morphology, and black arrows indicate dysmorphic mitochondrial cristae.