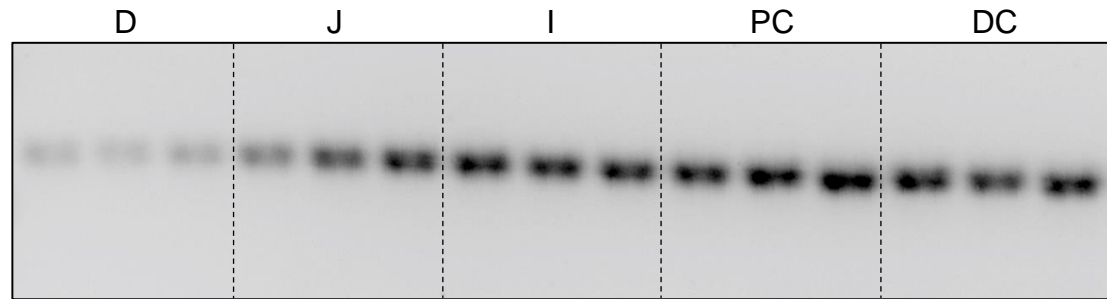


Supplementary Table 1. Primers and FAM/TAMRA labelled probes used for quantitative real-time PCR analysis.

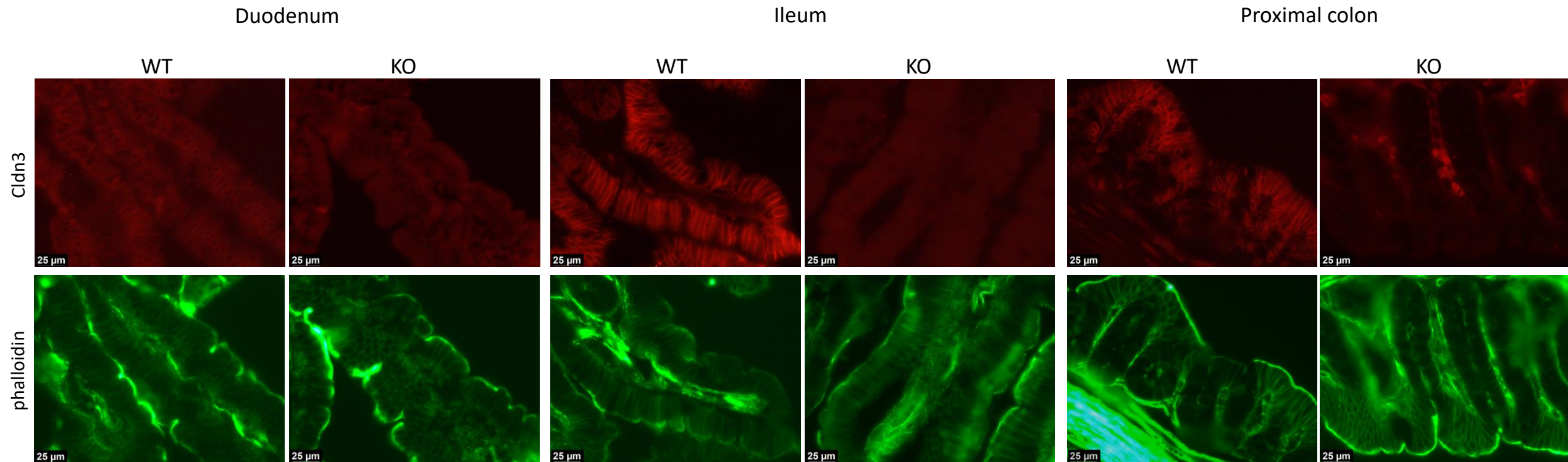
| | |
|-----------------------------------|---|
| Claudin-12 | FW: GCC TGA CTG GTT CCC TGA AG RV: CAG AGA TAA TCT GGA CCG GCT |
| TRPV5 | FW: CGT TGG TTC TTA CGG GTT GAA C RV: GTT TGG AGA ACC ACA GAG CCT CTA Probe: TGT TTC TCA GAT AGC TGC TCT TGT ACT TCC TCT TTG T |
| TRPV6 | FW: TTC TGC AGA TGG TTC CAC AG RV: TCT CTG GTG CAC CTC ACA TC Probe: CAG CAG AAG AGG ATC TGG GAA TC |
| NHE3 | FW: CAC ACC CCG CCC ATC TAC T RV: CCA GGC ATA CAG CAC TGA CAT T Probe: TGG AGG CGT CTG TCT CAT ATT TCT TGA GGG |
| ATP2b4 | FW: GGG CAG TGA GTG AGA ATC AGA RV: AGG TGT GGA TGG AGC TAC GA |
| Cyp24a1 | FW: CCA GCG GCT AGA GAT CAA AC RV: CAC GGG CTT CAT GAG TTT CT Probe: TAC GGG CTG ATG ATC CTG GAA GGAC |
| Cyp27b1 | FW: CCG ACC CTA CAC TTG TGG AG RV: ATT CTT CAC CAT CCG CCG TT Probe: TCT CAT CAT GGG CAG AGC ACC GTC |
| VDR | FW: GGA TCT GTG GAG TGT GTG GA RV: CAT GCT CCG CCT GAA GAA AC Probe: TAT GAC CTG TGA AGG CTG CA |
| HPRT | FW: TTA TCA GAC TGA AGA GCT ACT GTA ATG ATC RV: TTA CCA GTG TCA ATT ATA TCT TCA ACA ATC Probe: TGA GAG ATC ATC TCC ACC AAT AAC TTT TAT GTC CC |
| Claudin-3 (for RT-PCR) | FW: GTA CAA GAC GAG ACG GCC AA RV: GGG CAC CAA CGG GTT ATA GA |

Supplementary figure 1

A) Expression of *Cldn3* mRNA (RT-PCR) in intestinal segments of WT mice

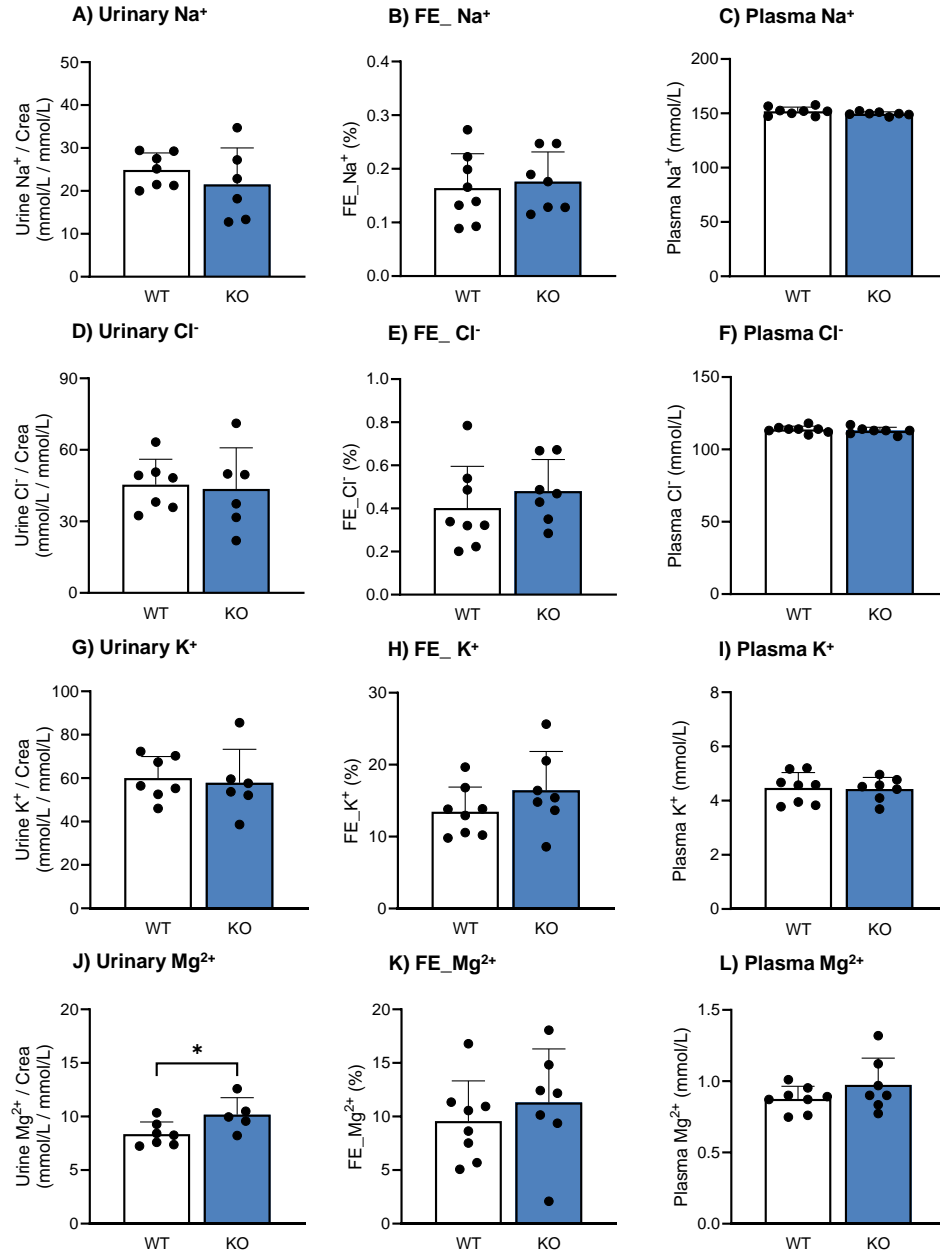


B) Expression of *Cldn3* protein in various intestinal segments of WT and *Cldn3* deficient mice



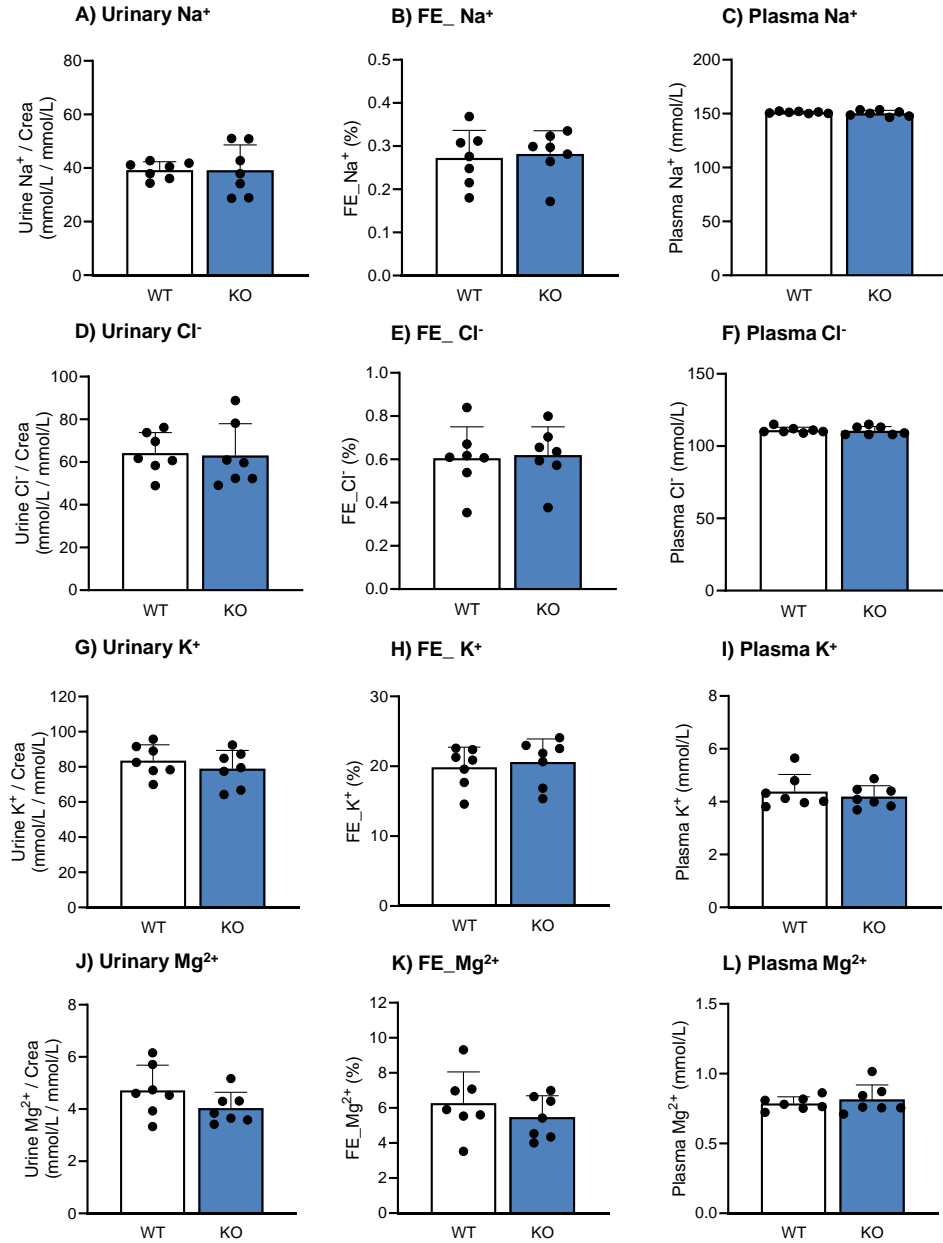
Supplementary figure 2 – mineral parameters under baseline conditions

□ WT
■ KO



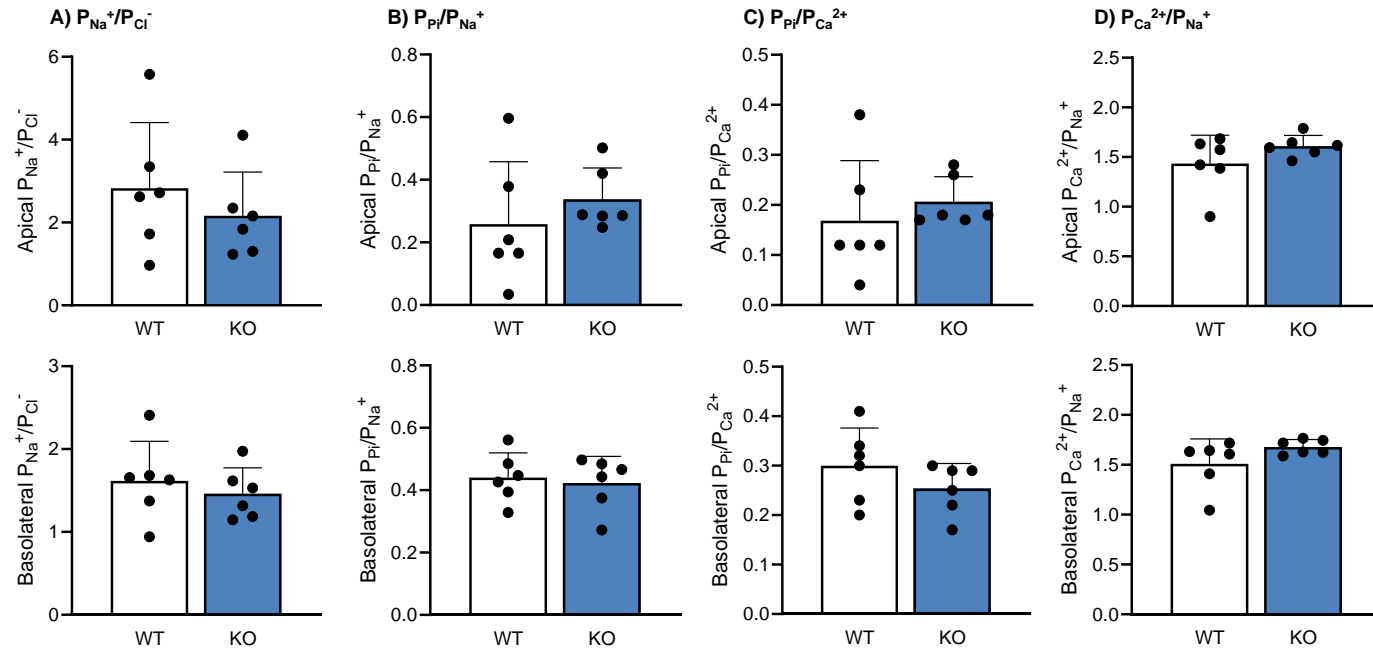
Supplementary figure 3 – mineral parameters under HP conditions

□ WT
■ KO



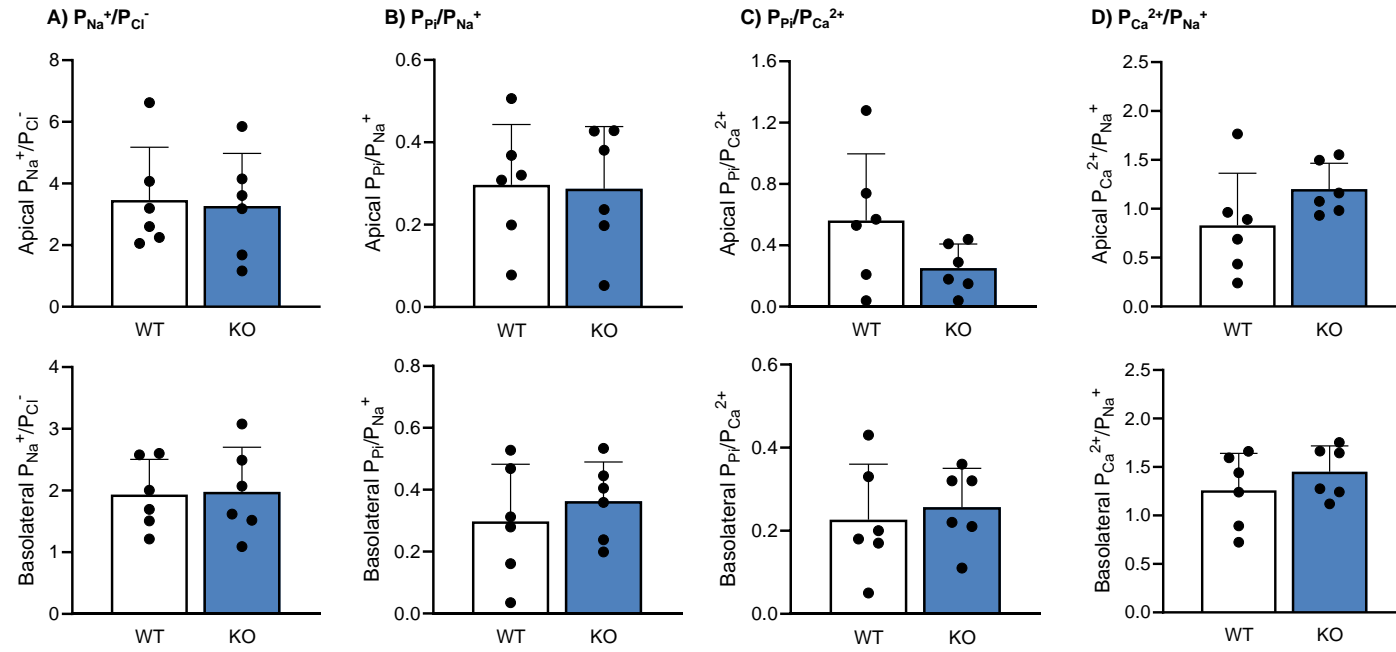
□ WT
■ KO

Supplementary figure 4 – Jejunal relative permeabilities upon HP diet



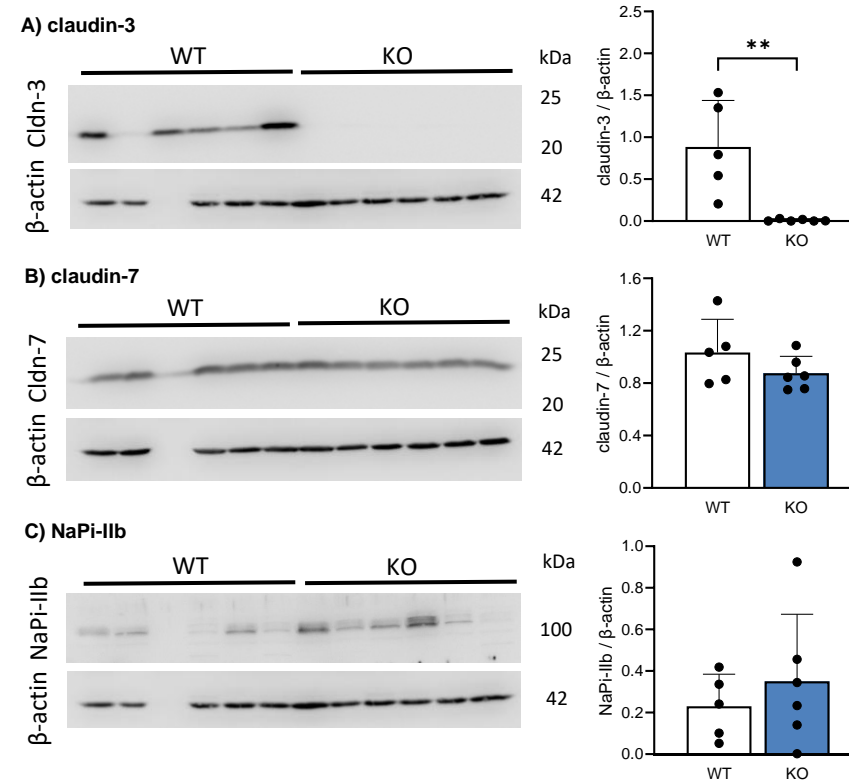
□ WT
■ KO

Supplementary figure 5 – Ileal relative permeabilities upon HP diet



□ WT
■ KO

Supplementary figure 6 – HP diet jejunal protein expression



Supplementary figure 7. Intestinal expression of Cldn3 and Cldn7 proteins in WT and *Cldn3* deficient mice

Jejunum

Ileum

wildtype

Cldn3 knockout

wildtype

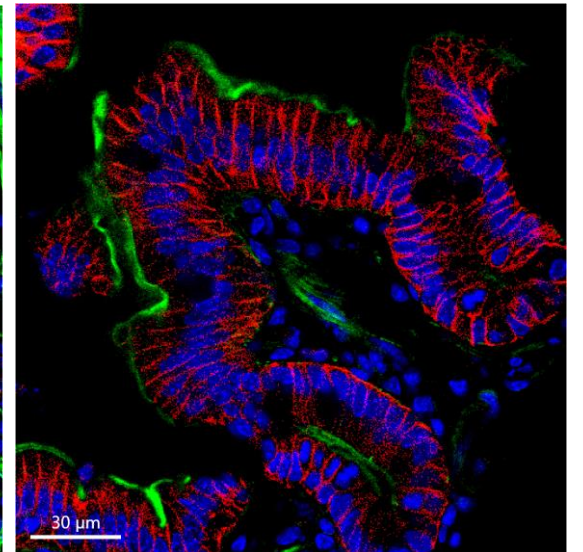
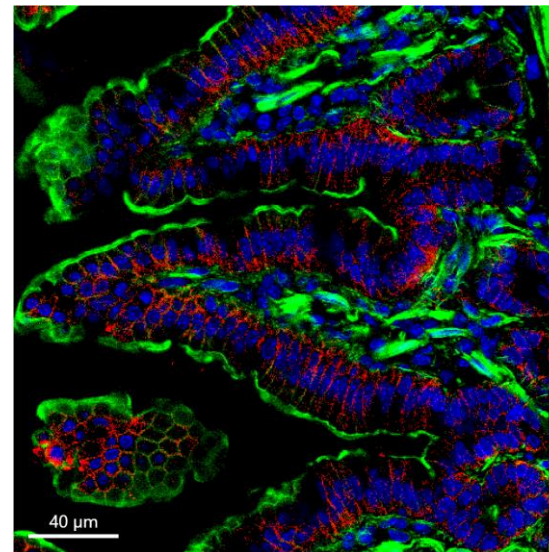
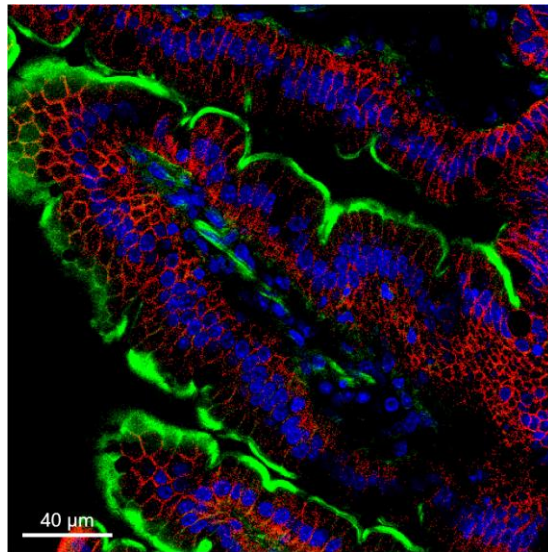
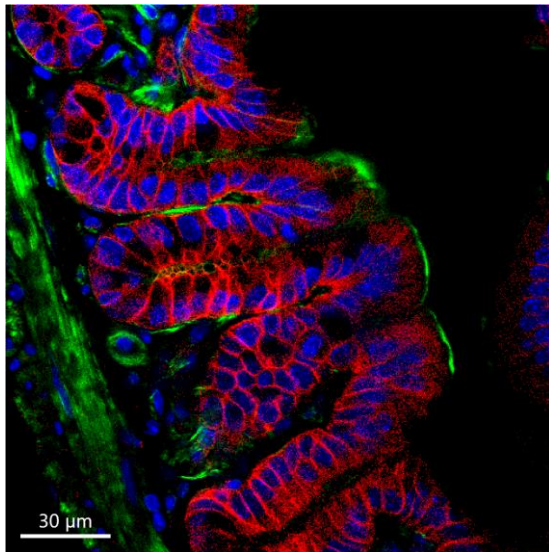
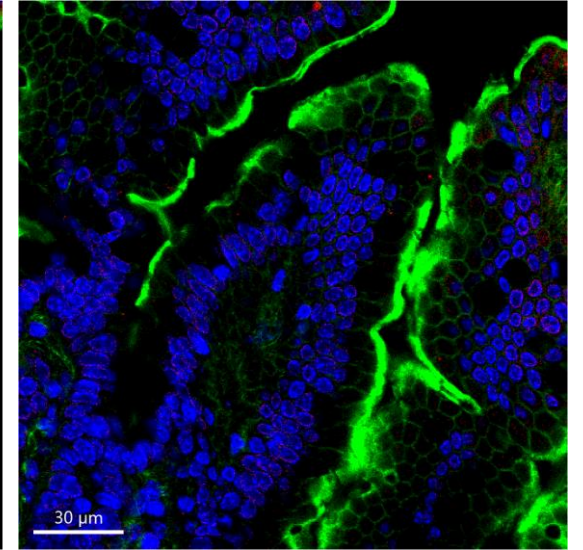
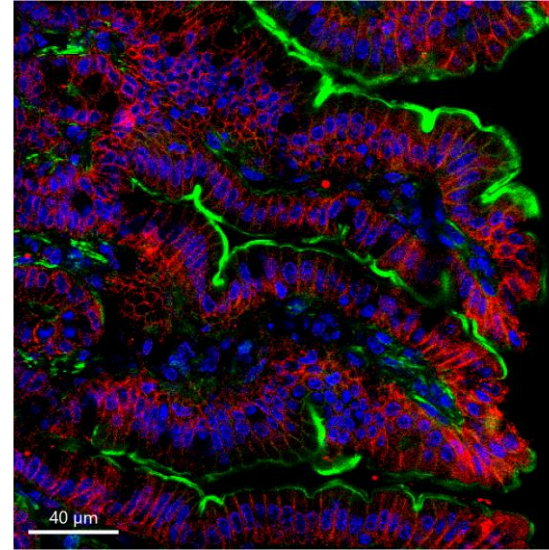
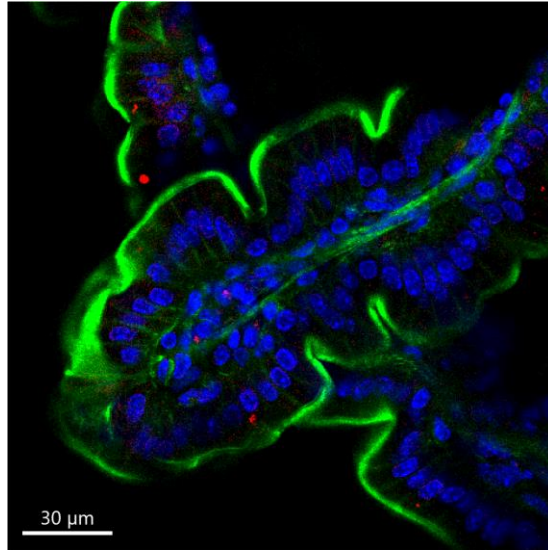
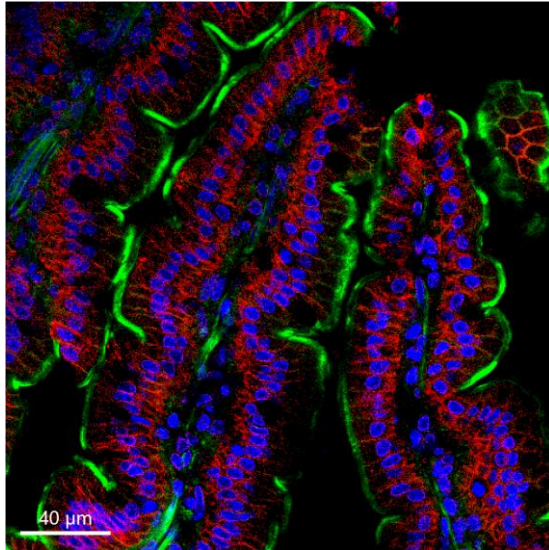
Cldn3 knockout

Cldn3

Cldn3

Cldn7

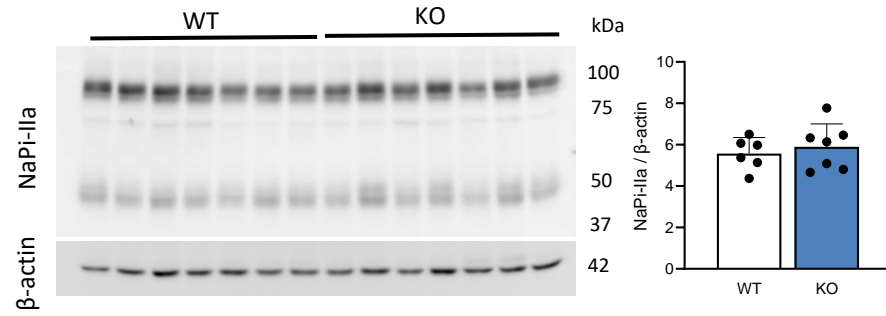
Cldn7



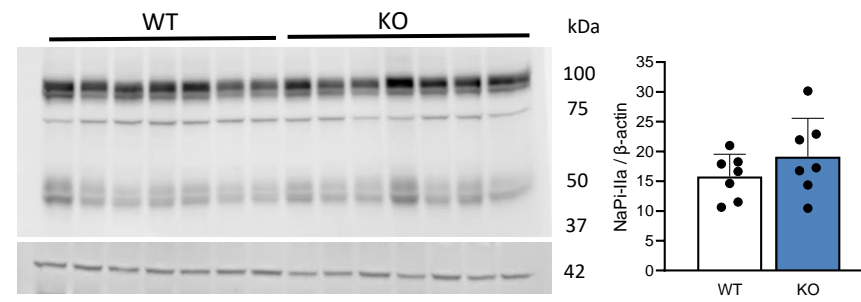
□ WT
■ KO

Supplementary figure 8 – renal protein expression

A) NaPi-IIa – baseline



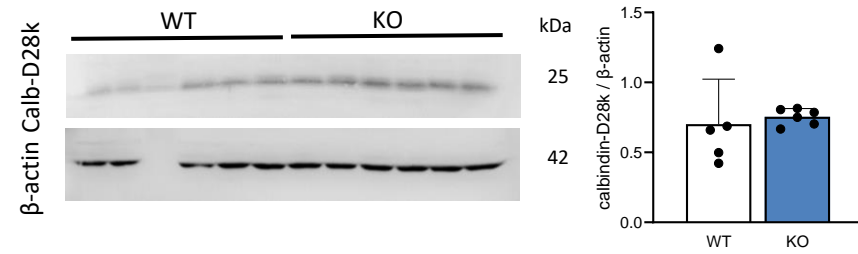
B) NaPi-IIa – HP diet



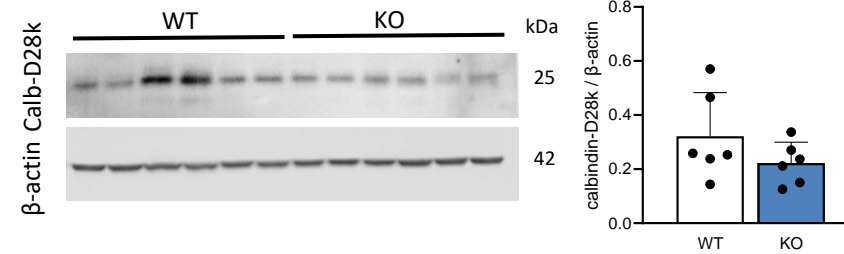
□ WT
■ KO

Supplementary figure 9 – HP diet jejunal and ileal protein expression

A) calbindin-D28k - jejunum



B) calbindin-D28k - ileum



□ WT
■ KO

Supplementary figure 10 – jejunal gene expression under baseline and HP conditions

