

Table S1 Tumor histology for resected and non-resected stage III lung cancer

Characteristics	Total	Pre-MDT	Post-MDT
Resected, n (%)	670	299	371
Adenocarcinoma	447 (66.7)	189 (63.2)	258 (69.5)
Squamous cell carcinoma	144 (21.5)	72 (24.1)	72 (19.4)
Small cell carcinoma	13 (1.9)	9 (3)	4 (1.1)
Carcinoma not otherwise specified	15 (2.2)	8 (2.7)	7 (1.9)
Undifferentiated carcinoma	17 (2.5)	10 (3.3)	7 (1.9)
Large cell neuroendocrine carcinoma	19 (2.8)	5 (1.7)	14 (3.8)
Large cell carcinoma	7 (1)	3 (1)	4 (1.1)
Sarcomatoid carcinoma	5 (0.7)	3 (1)	2 (0.5)
Other tumor not otherwise classified	3 (0.4)	0 (0)	3 (0.8)
Non-resected, n (%)	313	112	201
Adenocarcinoma	176 (56.2)	52 (46.4)	124 (61.7)
Squamous cell carcinoma	54 (17.3)	22 (19.6)	32 (15.9)
Small cell carcinoma	33 (10.5)	17 (15.2)	16 (8)
Carcinoma not otherwise specified	22 (7)	13 (11.6)	9 (4.5)
Undifferentiated carcinoma	9 (2.9)	3 (2.7)	6 (3)
Large cell neuroendocrine carcinoma	7 (2.2)	1 (0.9)	6 (3)
Large cell carcinoma	7 (2.2)	3 (2.7)	4 (2)
Sarcomatoid carcinoma	4 (1.3)	1 (0.9)	3 (1.5)
Other tumor not otherwise classified	1 (0.3)	0 (0)	1 (0.5)

MDT, multidisciplinary team.

Table S2 Detailed treatments modalities in patients with stage III lung cancer, stratified by resected and non-resected group

Treatments modalities	Total	Pre-MDT	Post-MDT
Resected	670	299	371
Trimodality therapy, n (%)	237 (40.7)	90 (30.1)	147 (39.6)
Chemotherapy + surgery + radiotherapy	122	49	73
Surgery + radiotherapy + chemotherapy	98	30	68
Surgery + radiotherapy + chemotherapy + immunotherapy	1	0	1
Chemotherapy + radiotherapy + surgery	11	6	5
Chemotherapy + radiotherapy + surgery + chemotherapy	1	1	0
Chemotherapy + surgery + chemotherapy + radiotherapy	4	4	0
Surgery + systemic therapy, n (%)	234 (34.9)	103 (34.4)	131 (35.3)
Induction chemotherapy	122	57	65
Adjuvant chemotherapy	102	40	62
Induction chemotherapy + target therapy	3	1	2
Surgery + target therapy	1	0	1
Pre and post chemotherapy	5	5	0
Surgery + radiotherapy + target therapy	1	0	1
Surgery +/- radiotherapy, n (%)	199 (29.7)	106 (35.5)	93 (25.1)
Radiotherapy + surgery	1	1	0
Surgery + radiotherapy	25	11	14
Surgery	173	94	79
Non-resected	313	112	201
Chemoradiotherapy, n (%)	101 (26.2)	23 (14.7)	78 (34.1)
Chemoradiotherapy	74	23	51
Chemoradiotherapy + immunotherapy	18	0	18
Chemoradiotherapy + target therapy	8	0	8
Chemoradiotherapy + immunotherapy + target therapy	1	0	1
Systemic therapy, n (%)	132 (34.3)	54 (34.6)	78 (34.1)
Chemotherapy	103	54	49
Chemotherapy + immunotherapy	13	0	13
Chemotherapy + target therapy	5	0	5
Radiotherapy + immunotherapy	1	0	1
Radiotherapy + target therapy	1	0	1
Target therapy	4	0	4
Immunotherapy	5	0	5
No chemotherapy, n (%)	80 (20.8)	35 (22.4)	45 (19.7)
Radiotherapy	14	5	9
No therapy	66	30	36

MDT, multidisciplinary team.

Table S3 Patient and clinical characteristics in matched cohorts

Characteristics	Total, N=891	Pre-MDT propensity score matching, N=319	Post-MDT, N=572	P
Patient's characteristics				
Age at the diagnosis (years), n (%)				
<55	120 (13.5)	56 (17.6)	64 (11.2)	0.0086
55-74	621 (69.7)	220 (69)	401 (70.1)	
≥75	150 (16.8)	43 (13.5)	107 (18.7)	
Sex, n (%)				
Female	339 (38)	113 (35.4)	226 (39.5)	0.2283
Male	552 (62)	206 (64.6)	346 (60.5)	
Smoking status, n (%) ^a				
Current smoker	555 (62.3)	266 (83.4)	289 (50.5)	<0.0001
Ex-smoker	222 (24.9)	3 (0.9)	219 (38.3)	
Never smoke	107 (12)	46 (14.4)	61 (10.7)	
Tumor characteristics				
Histology type, n (%)				
Adenocarcinoma	583 (65.4)	201 (63)	382 (66.8)	0.4184
Squamous cell carcinoma	168 (18.9)	64 (20.1)	104 (18.2)	
Large cell neuroendocrine carcinoma	39 (4.4)	11 (3.4)	28 (4.9)	
Small cell lung cancer (SCLC)	36 (4)	16 (5)	20 (3.5)	
Other tumor not otherwise classified	65 (7.3)	27 (8.5)	38 (6.6)	
Stage TNM 8th edition, n (%)				
IIIA	660 (74.1)	234 (73.4)	426 (74.5)	0.8387
IIIB	218 (24.5)	81 (25.4)	137 (24)	
IIIC	13 (1.5)	4 (1.3)	9 (1.6)	
Therapeutic approach				
Surgery, n (%)				
Yes	602 (67.6)	231 (72.4)	371 (64.9)	0.0209
No	289 (32.4)	88 (27.6)	201 (35.1)	
Resected only	602	231	371	
Type of surgical procedure, n (%)				
Pneumonectomy	104 (11.7)	48 (15)	56 (15.1)	0.1281
Lobectomy	443 (49.7)	166 (52)	277 (74.7)	
Sublobar	55 (6.2)	17 (5.3)	38 (10.2)	
Treatment modalities, n (%)				
Trimodality therapy	217 (24.4)	70 (21.9)	147 (39.6)	0.0076
Surgery + systemic therapy	208 (23.3)	77 (24.1)	131 (35.3)	
Surgery +/- RT	177 (19.9)	84 (26.3)	93 (25.1)	
Non-resected only	289	88	201	
Treatment modalities, n (%)				
Chemoradiotherapy	93 (10.4)	15 (4.7)	78 (38.8)	0.0013
Systemic therapy	123 (13.8)	45 (14.1)	78 (38.8)	
No chemotherapy	73 (8.2)	28 (8.8)	45 (22.4)	

^a, 7 missing data. MDT, multidisciplinary team; TNM, tumour nodes metastasis; RT, radiotherapy.

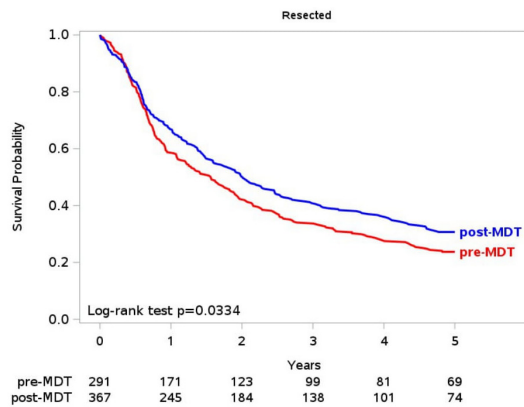


Figure S1 Five-year disease-free survival in resected stage III lung cancer patients. MDT, multidisciplinary team.

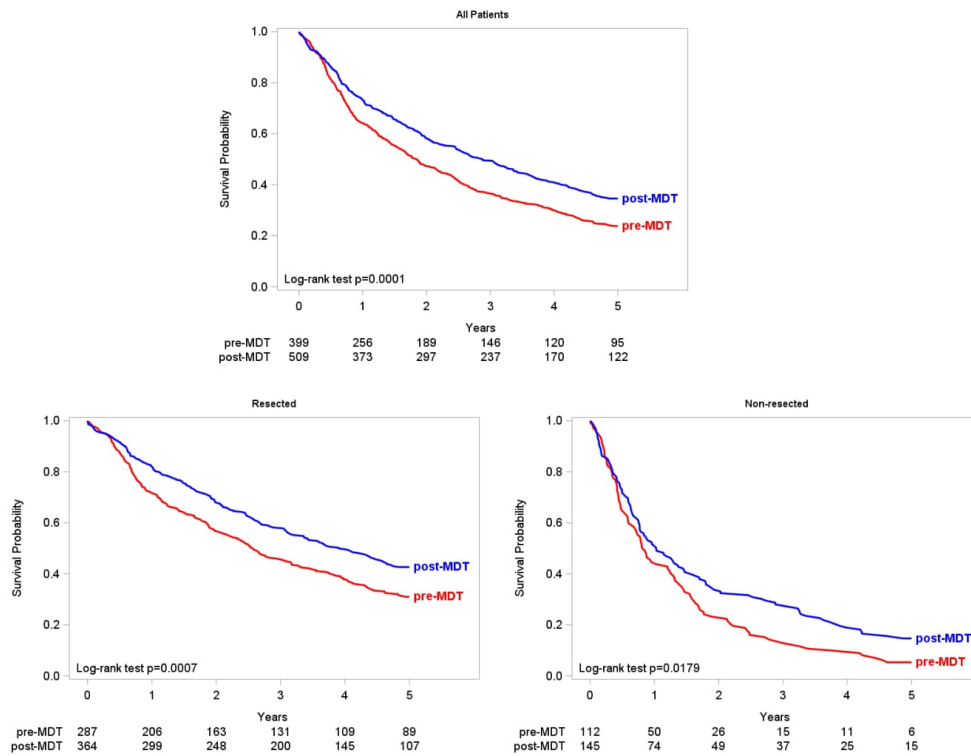


Figure S2 Five-year overall survival (OS) in stage III lung cancer stratified in a selected cohort. For resected patients we considered only patients treated with: CT + S + RT; CT + RT + S; S + RT + CT; CT + S; S + CT; S + RT; S. For non-resected patients we considered only patients treated with: CT; CT + RT; no therapy; RT. MDT, multidisciplinary team; CT, chemotherapy; S, surgery; RT, radiotherapy.

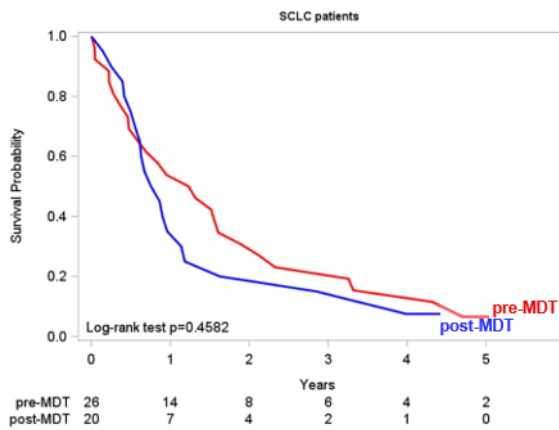


Figure S3 Five-year overall survival (OS) between small-cell lung cancer (SCLC) patients diagnosed in the two study periods. MDT, multidisciplinary team.

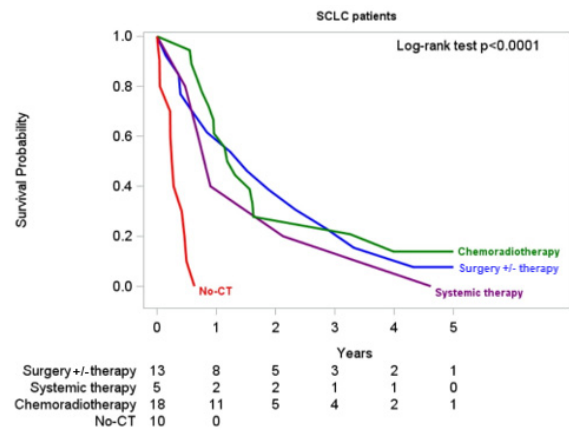


Figure S4 Five-year overall survival (OS) in patients with small-cell lung cancer (SCLC) stratified by treatments. CT, chemotherapy