

Supplemental Materials for

Human intermediate prostate cancer stem cells contribute to the initiation and development of prostate adenocarcinoma

Jie Mu^{1,2}, Ruizhi Li^{1,3}, Yu Zheng^{1,4}, Yi Lu⁴, Lei Ma^{1,3}, Lin Yin^{1,3}, Miao Zhang¹, Wenyu Ma¹, Mengjia Chang¹, Aihua Liu^{1,2*}, Jing Li^{1*}, Hai Zhu^{4*}, Dong Wang^{1*}

¹Institute for Translational Medicine, School of Pharmacy, The Affiliated Hospital of Qingdao University, Medical College, Qingdao University, Qingdao 266071, China

²College of Life Sciences, Qingdao University, 308 Ningxia Road, Qingdao 266071, China

³School of Basic Medicine, Qingdao University, Qingdao, China 266021

⁴Department of Urology, Qingdao Municipal Hospital, Qingdao University, Qingdao, China 266011

*Correspondence: dongwang@qdu.edu.cn (D.W.), shijingzhou@163.com (H.Z.), jingli@qdu.edu.cn (J.L.), and liuah@qdu.edu.cn (A.L.)

Table S1: The antibodies used in the study.

Table S2: The primers used in the study.

Figure S1: Uncropped blots of Figure 3, E.

Figure S2: Uncropped blots of Figure 6.

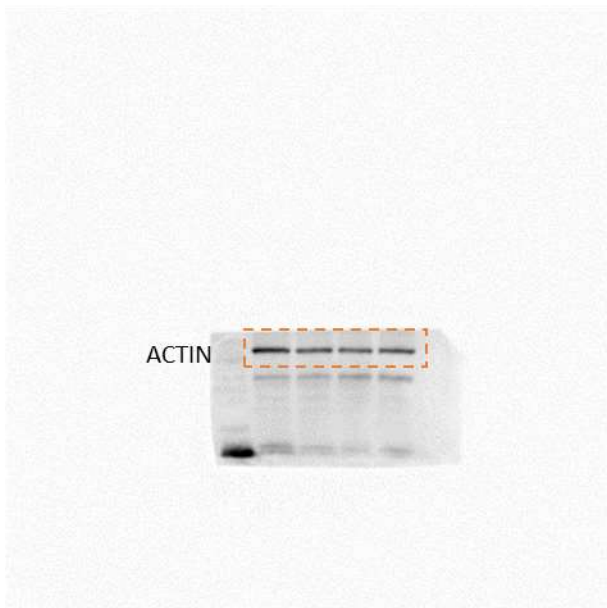
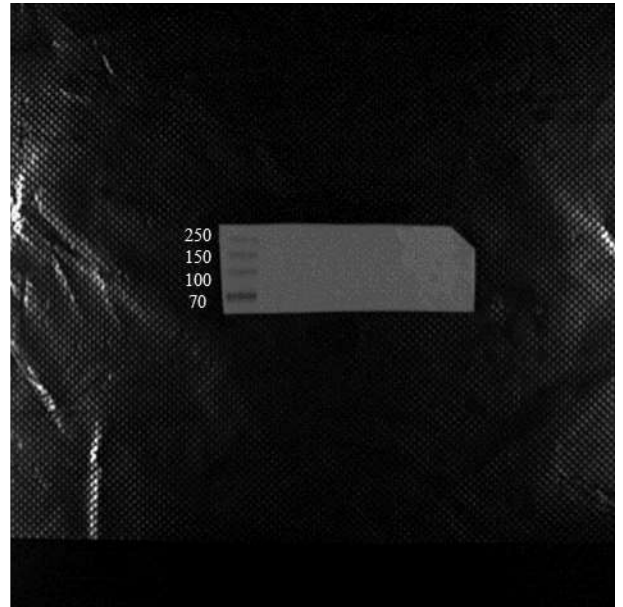
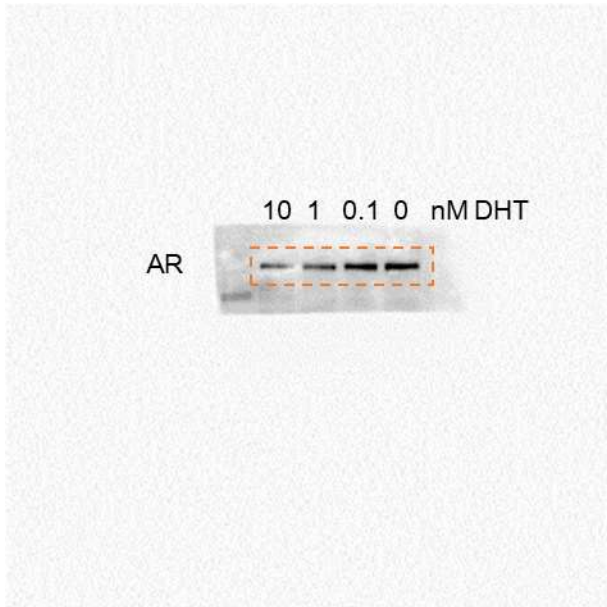
Table S1. The antibodies used in the study.

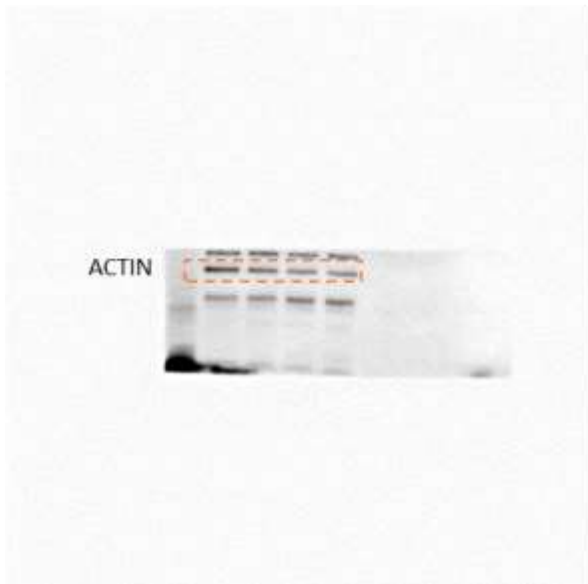
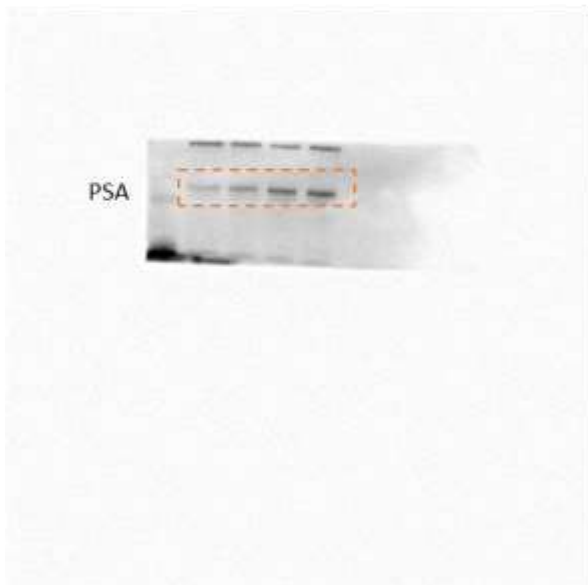
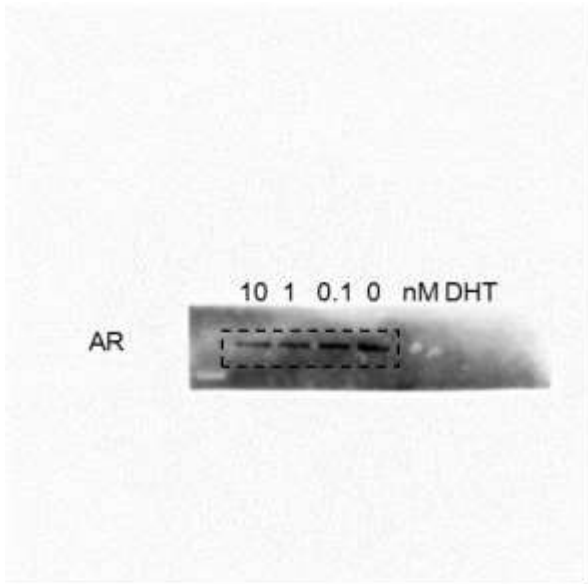
Antibody	Supplier	Source	Cat#	Dilution
AR	Abcam	rabbit	ab108341	1:200
PSA	Proteintech	rabbit	10679-1-AP	1:100
CK8	Santa	mouse	Sc8020	1:50
CK5	BBI	rabbit	D220236	1:100
P63	BBI	rabbit	D125020	1:200
SOX2	Proteintech	rabbit	11064-1-AP	1:100

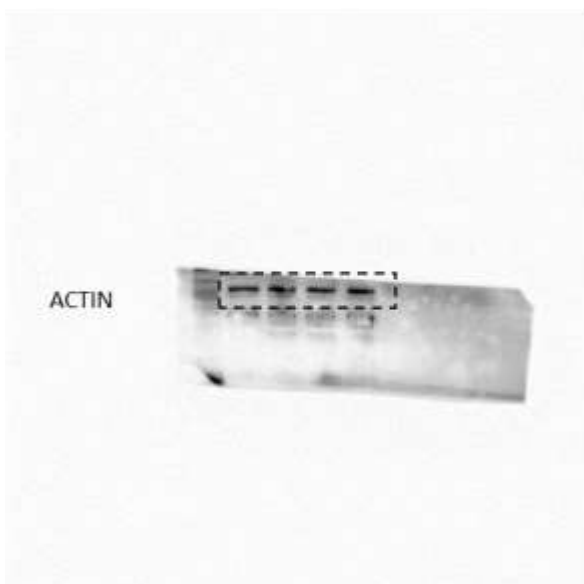
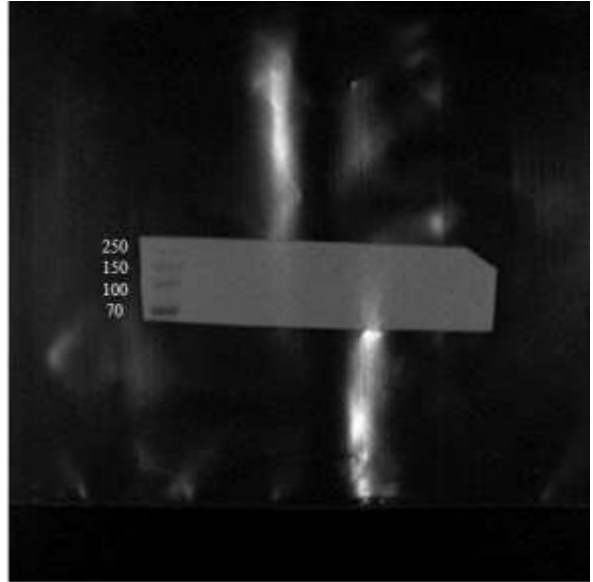
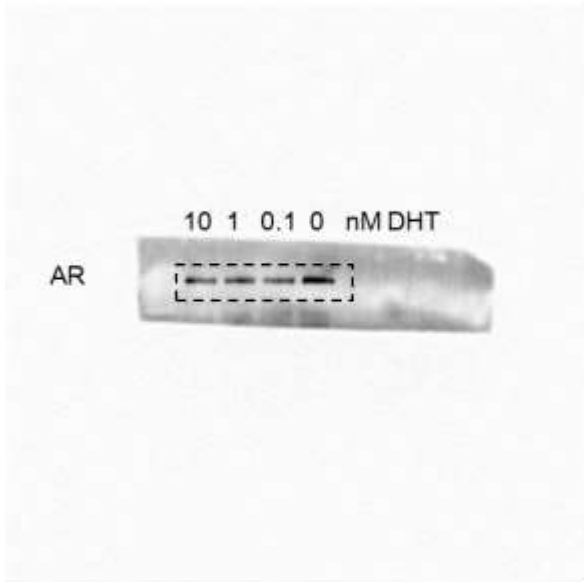
Table S2. The primers used in the study.

AR	GGAGGCGACAGAGGGAAAAA; TTCACCGAAGAGGAAAGGGC
ARV7	CTACTCCGGACCTTACGGGGACATGCG; TGCCAACCCGGAATTTTTCTCCC
CK8	TCCTCAGGCAGCTATATGAAGAG; GGTGGCAATATCCTCGTACTGT
CK18	TCGCAAATACTGTGGACAATGC; GCAGTCGTGTGATATTGGTGT
PSA	ACTCACAGCAAGGATGGAGC; TCCCATGCCAAAGGAAGACC
CK5	CCAAGGTTGATGCACTGATGG; TGTCAGAGACATGCGTCTGC
P63	GTCATTTGATTTCGAGTAGAGGGG; CTGGGGTGGCTCATAAGGT
CHGA	TAAAGGGGATACCGAGGTGATG; TCGGAGTGTCTCAAACATTCC
SYP	TTAGTTGGGGACTACTCCTCG; GGCCCTTTGTTATTCTCTCGGTA
IVL	TCCTCCAGTCAATACCCATCAG; CAGCAGTCATGTGCTTTTCCT
CK4	CTCTTTGAGACCTACCTCAGTGT; GGCTGCTGTGCGTTTGTTG
CK13	GACCGCCACCATTGAAAACAA; TCCAGGTCAGTCTTAGACAGAG
PSCA	CTGAGGCACATCCTAACGCA; TCAATAGAGCCGATCTGCCG
SOX2	CCCCCGGCGGCAATAGCA; TCGGVGCCGGGAGATACAT
KI67	GAAAGAGTGGCAACCTGCCTTC; GCACCAAGTTTTACTACATCTGCC
PCNA	CAAGTAATGTGCGATAAAGAGGAGG; GTGTCACCGTTGAAGAGAGTGG

Figure S1: Uncropped blots of Figure 3, E.







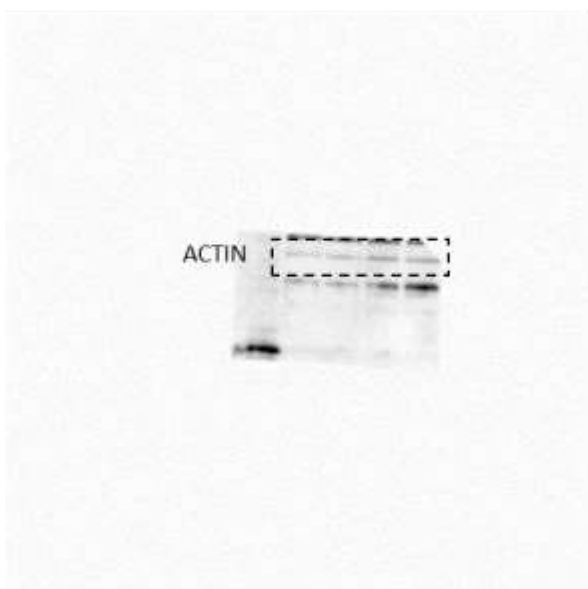
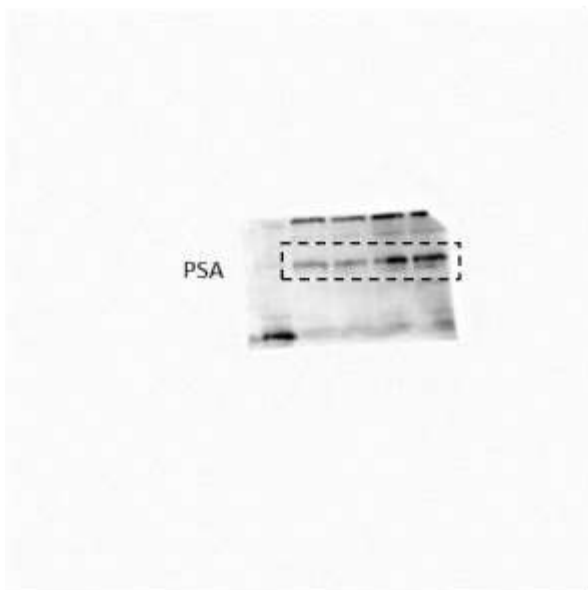
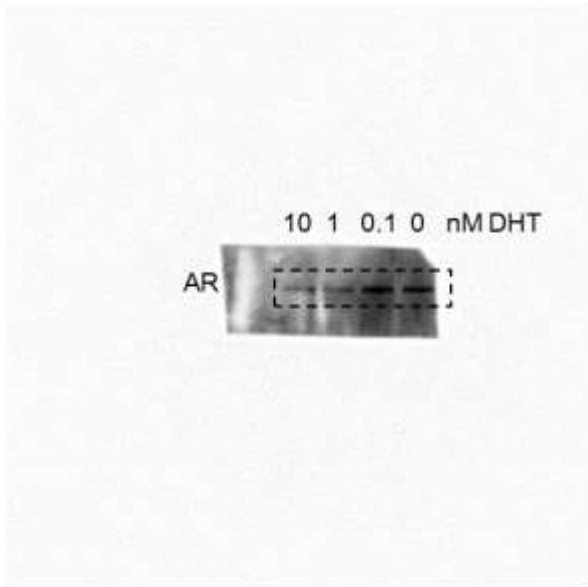
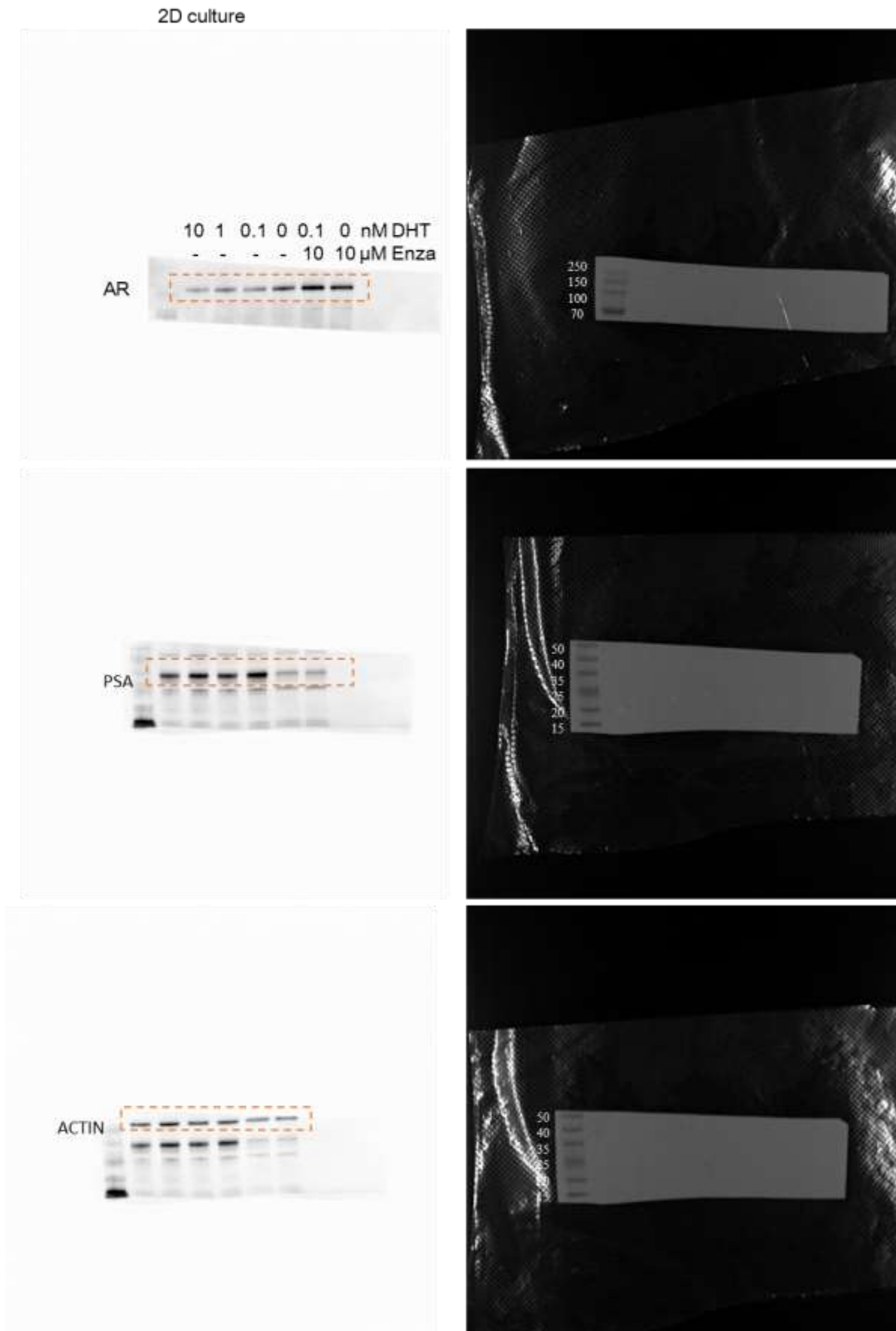
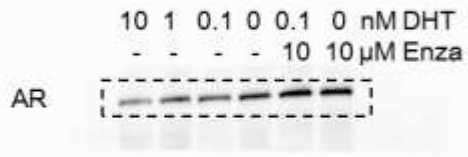


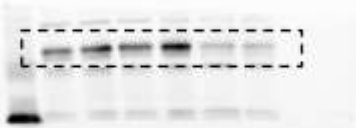
Figure S2: Uncropped blots of Figure 6.



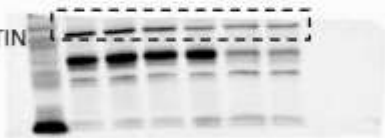
2D culture



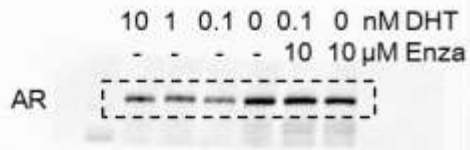
PSA



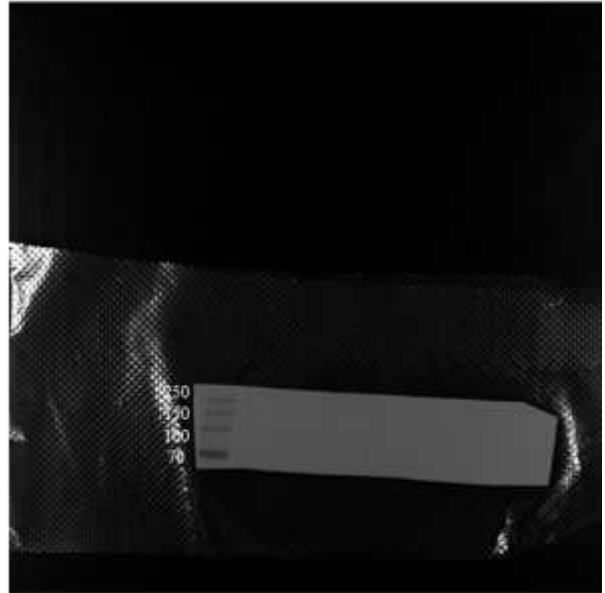
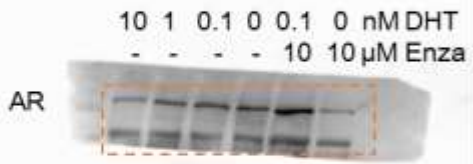
ACTIN

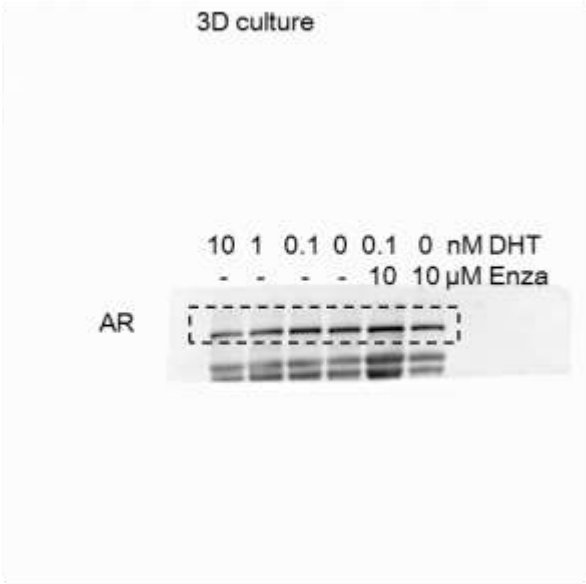


2D culture



3D culture





3D culture

